

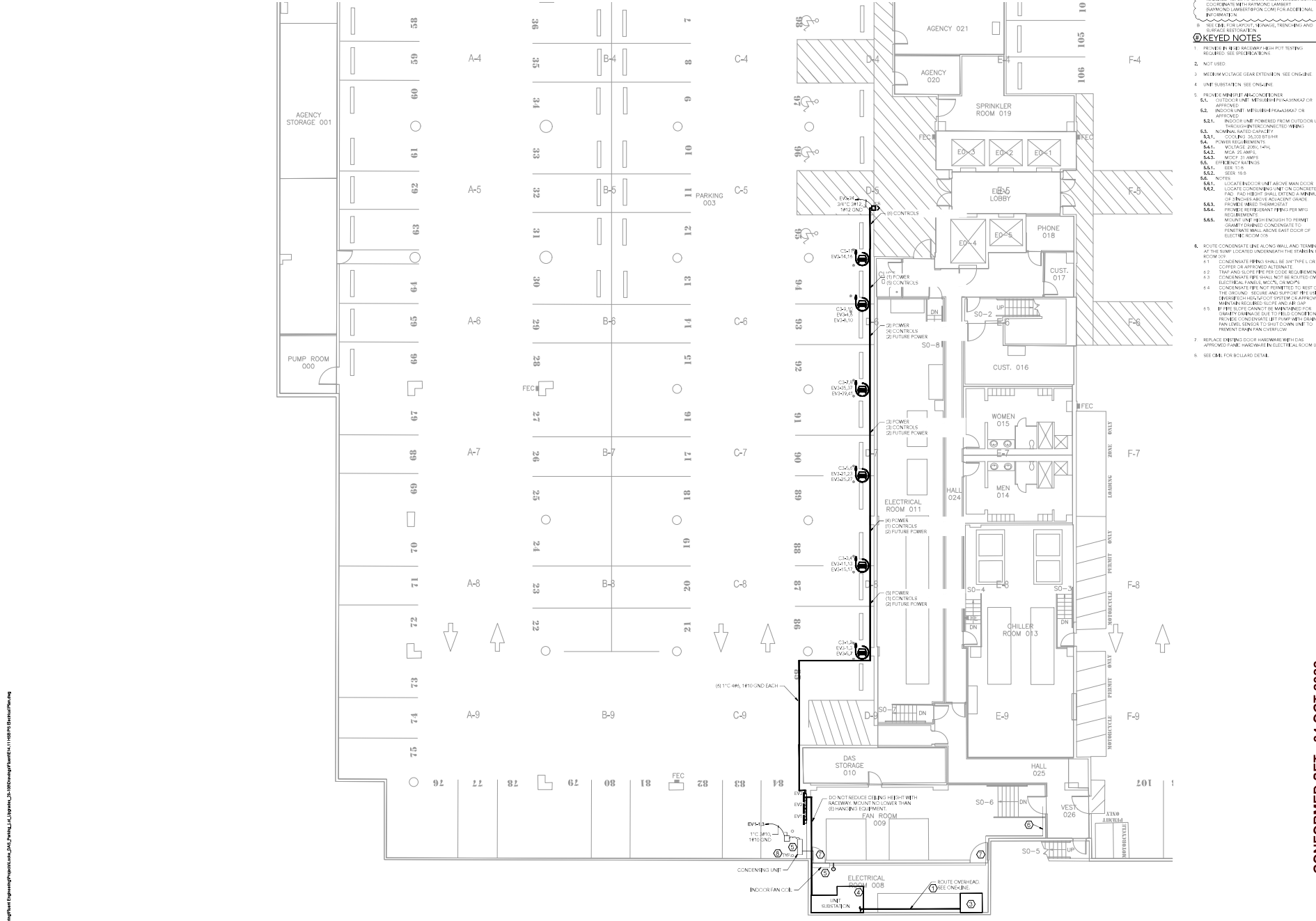
REV.	DATE	DESCRIPTION
1	16 APR 2022	REVISIONS FOR CITY PLAN REVIEW

SHEET NOTES

A. SEE SHEET FOR WORK AT THE SITE. ALL WORK SHALL BE IN ACCORDANCE WITH THE CITY OF SALEM'S STANDARD SPECIFICATIONS FOR CONSTRUCTION. THE CONTRACTOR SHALL BE RESPONSIBLE FOR OBTAINING ALL NECESSARY PERMITS AND APPROVALS FROM THE CITY OF SALEM.

B. SEE SHEET FOR UTILITY, TRAFFIC, AND SURFACE RESTORATION.

- KEYED NOTES**
1. PROVIDE IN-PILE RAYONIER POT TESTING REQUIRED SEE SPECIFICATIONS.
 2. NOT USED.
 3. MEDIUM VOLTAGE GEAR EXTENSION SEE ENGINEER.
 4. UNIT SUBSTATION SEE ONLINE.
 5. PROVIDE MINIMUM CONCERNED AREA:
 - 5A. SUBSTATION WITH BATTERY BACKUP OR APPROVED.
 - 5B. PROTECTIVE DEVICE FOR OVERCURRENTS APPROVED.
 - 5C. PROTECTIVE DEVICE FOR SHORT CIRCUIT APPROVED.
 - 5D. PROTECTIVE DEVICE FOR GROUND FAULT APPROVED.
 - 5E. PROTECTIVE DEVICE FOR OVERVOLTAGE APPROVED.
 - 5F. PROTECTIVE DEVICE FOR UNDERVOLTAGE APPROVED.
 - 5G. PROTECTIVE DEVICE FOR OVERTEMPERATURE APPROVED.
 - 5H. PROTECTIVE DEVICE FOR OVERSPEED APPROVED.
 - 5I. PROTECTIVE DEVICE FOR OVERCURRENTS APPROVED.
 - 5J. PROTECTIVE DEVICE FOR SHORT CIRCUIT APPROVED.
 - 5K. PROTECTIVE DEVICE FOR GROUND FAULT APPROVED.
 - 5L. PROTECTIVE DEVICE FOR OVERVOLTAGE APPROVED.
 - 5M. PROTECTIVE DEVICE FOR UNDERVOLTAGE APPROVED.
 - 5N. PROTECTIVE DEVICE FOR OVERTEMPERATURE APPROVED.
 - 5O. PROTECTIVE DEVICE FOR OVERSPEED APPROVED.
 6. ROUTE CONDENSATE UNIT AS LOW AS POSSIBLE TO THE STREET OR TO THE STREET SIDE OF THE PROPERTY. CONDENSATE PIPING SHALL BE IN TYPICAL OR COMMON SENSE APPROXIMATE:
 - 6.1. TYPICAL SLOPE PER CODE REQUIREMENTS.
 - 6.2. TYPICAL SLOPE PER CODE REQUIREMENTS.
 - 6.3. CONDENSATE PIPE NOT PERMITTED TO REST ON THE GROUND - SECURE AND SUPPORT PER CODE REQUIREMENTS.
 - 6.4. CONDENSATE PIPE NOT PERMITTED TO REST ON THE GROUND - SECURE AND SUPPORT PER CODE REQUIREMENTS.
 - 6.5. CONDENSATE PIPE NOT PERMITTED TO REST ON THE GROUND - SECURE AND SUPPORT PER CODE REQUIREMENTS.
 - 6.6. CONDENSATE PIPE NOT PERMITTED TO REST ON THE GROUND - SECURE AND SUPPORT PER CODE REQUIREMENTS.
 - 6.7. CONDENSATE PIPE NOT PERMITTED TO REST ON THE GROUND - SECURE AND SUPPORT PER CODE REQUIREMENTS.
 - 6.8. CONDENSATE PIPE NOT PERMITTED TO REST ON THE GROUND - SECURE AND SUPPORT PER CODE REQUIREMENTS.
 - 6.9. CONDENSATE PIPE NOT PERMITTED TO REST ON THE GROUND - SECURE AND SUPPORT PER CODE REQUIREMENTS.
 - 6.10. CONDENSATE PIPE NOT PERMITTED TO REST ON THE GROUND - SECURE AND SUPPORT PER CODE REQUIREMENTS.
 - 6.11. CONDENSATE PIPE NOT PERMITTED TO REST ON THE GROUND - SECURE AND SUPPORT PER CODE REQUIREMENTS.
 - 6.12. CONDENSATE PIPE NOT PERMITTED TO REST ON THE GROUND - SECURE AND SUPPORT PER CODE REQUIREMENTS.
 - 6.13. CONDENSATE PIPE NOT PERMITTED TO REST ON THE GROUND - SECURE AND SUPPORT PER CODE REQUIREMENTS.
 - 6.14. CONDENSATE PIPE NOT PERMITTED TO REST ON THE GROUND - SECURE AND SUPPORT PER CODE REQUIREMENTS.
 - 6.15. CONDENSATE PIPE NOT PERMITTED TO REST ON THE GROUND - SECURE AND SUPPORT PER CODE REQUIREMENTS.
 - 6.16. CONDENSATE PIPE NOT PERMITTED TO REST ON THE GROUND - SECURE AND SUPPORT PER CODE REQUIREMENTS.
 - 6.17. CONDENSATE PIPE NOT PERMITTED TO REST ON THE GROUND - SECURE AND SUPPORT PER CODE REQUIREMENTS.
 - 6.18. CONDENSATE PIPE NOT PERMITTED TO REST ON THE GROUND - SECURE AND SUPPORT PER CODE REQUIREMENTS.
 - 6.19. CONDENSATE PIPE NOT PERMITTED TO REST ON THE GROUND - SECURE AND SUPPORT PER CODE REQUIREMENTS.
 - 6.20. CONDENSATE PIPE NOT PERMITTED TO REST ON THE GROUND - SECURE AND SUPPORT PER CODE REQUIREMENTS.
 - 6.21. CONDENSATE PIPE NOT PERMITTED TO REST ON THE GROUND - SECURE AND SUPPORT PER CODE REQUIREMENTS.
 - 6.22. CONDENSATE PIPE NOT PERMITTED TO REST ON THE GROUND - SECURE AND SUPPORT PER CODE REQUIREMENTS.
 - 6.23. CONDENSATE PIPE NOT PERMITTED TO REST ON THE GROUND - SECURE AND SUPPORT PER CODE REQUIREMENTS.
 - 6.24. CONDENSATE PIPE NOT PERMITTED TO REST ON THE GROUND - SECURE AND SUPPORT PER CODE REQUIREMENTS.
 - 6.25. CONDENSATE PIPE NOT PERMITTED TO REST ON THE GROUND - SECURE AND SUPPORT PER CODE REQUIREMENTS.
 - 6.26. CONDENSATE PIPE NOT PERMITTED TO REST ON THE GROUND - SECURE AND SUPPORT PER CODE REQUIREMENTS.
 - 6.27. CONDENSATE PIPE NOT PERMITTED TO REST ON THE GROUND - SECURE AND SUPPORT PER CODE REQUIREMENTS.
 - 6.28. CONDENSATE PIPE NOT PERMITTED TO REST ON THE GROUND - SECURE AND SUPPORT PER CODE REQUIREMENTS.
 - 6.29. CONDENSATE PIPE NOT PERMITTED TO REST ON THE GROUND - SECURE AND SUPPORT PER CODE REQUIREMENTS.
 - 6.30. CONDENSATE PIPE NOT PERMITTED TO REST ON THE GROUND - SECURE AND SUPPORT PER CODE REQUIREMENTS.
 - 6.31. CONDENSATE PIPE NOT PERMITTED TO REST ON THE GROUND - SECURE AND SUPPORT PER CODE REQUIREMENTS.
 - 6.32. CONDENSATE PIPE NOT PERMITTED TO REST ON THE GROUND - SECURE AND SUPPORT PER CODE REQUIREMENTS.
 - 6.33. CONDENSATE PIPE NOT PERMITTED TO REST ON THE GROUND - SECURE AND SUPPORT PER CODE REQUIREMENTS.
 - 6.34. CONDENSATE PIPE NOT PERMITTED TO REST ON THE GROUND - SECURE AND SUPPORT PER CODE REQUIREMENTS.
 - 6.35. CONDENSATE PIPE NOT PERMITTED TO REST ON THE GROUND - SECURE AND SUPPORT PER CODE REQUIREMENTS.
 - 6.36. CONDENSATE PIPE NOT PERMITTED TO REST ON THE GROUND - SECURE AND SUPPORT PER CODE REQUIREMENTS.
 - 6.37. CONDENSATE PIPE NOT PERMITTED TO REST ON THE GROUND - SECURE AND SUPPORT PER CODE REQUIREMENTS.
 - 6.38. CONDENSATE PIPE NOT PERMITTED TO REST ON THE GROUND - SECURE AND SUPPORT PER CODE REQUIREMENTS.
 - 6.39. CONDENSATE PIPE NOT PERMITTED TO REST ON THE GROUND - SECURE AND SUPPORT PER CODE REQUIREMENTS.
 - 6.40. CONDENSATE PIPE NOT PERMITTED TO REST ON THE GROUND - SECURE AND SUPPORT PER CODE REQUIREMENTS.
 - 6.41. CONDENSATE PIPE NOT PERMITTED TO REST ON THE GROUND - SECURE AND SUPPORT PER CODE REQUIREMENTS.
 - 6.42. CONDENSATE PIPE NOT PERMITTED TO REST ON THE GROUND - SECURE AND SUPPORT PER CODE REQUIREMENTS.
 - 6.43. CONDENSATE PIPE NOT PERMITTED TO REST ON THE GROUND - SECURE AND SUPPORT PER CODE REQUIREMENTS.
 - 6.44. CONDENSATE PIPE NOT PERMITTED TO REST ON THE GROUND - SECURE AND SUPPORT PER CODE REQUIREMENTS.
 - 6.45. CONDENSATE PIPE NOT PERMITTED TO REST ON THE GROUND - SECURE AND SUPPORT PER CODE REQUIREMENTS.
 - 6.46. CONDENSATE PIPE NOT PERMITTED TO REST ON THE GROUND - SECURE AND SUPPORT PER CODE REQUIREMENTS.
 - 6.47. CONDENSATE PIPE NOT PERMITTED TO REST ON THE GROUND - SECURE AND SUPPORT PER CODE REQUIREMENTS.
 - 6.48. CONDENSATE PIPE NOT PERMITTED TO REST ON THE GROUND - SECURE AND SUPPORT PER CODE REQUIREMENTS.
 - 6.49. CONDENSATE PIPE NOT PERMITTED TO REST ON THE GROUND - SECURE AND SUPPORT PER CODE REQUIREMENTS.
 - 6.50. CONDENSATE PIPE NOT PERMITTED TO REST ON THE GROUND - SECURE AND SUPPORT PER CODE REQUIREMENTS.
 - 6.51. CONDENSATE PIPE NOT PERMITTED TO REST ON THE GROUND - SECURE AND SUPPORT PER CODE REQUIREMENTS.
 - 6.52. CONDENSATE PIPE NOT PERMITTED TO REST ON THE GROUND - SECURE AND SUPPORT PER CODE REQUIREMENTS.
 - 6.53. CONDENSATE PIPE NOT PERMITTED TO REST ON THE GROUND - SECURE AND SUPPORT PER CODE REQUIREMENTS.
 - 6.54. CONDENSATE PIPE NOT PERMITTED TO REST ON THE GROUND - SECURE AND SUPPORT PER CODE REQUIREMENTS.
 - 6.55. CONDENSATE PIPE NOT PERMITTED TO REST ON THE GROUND - SECURE AND SUPPORT PER CODE REQUIREMENTS.
 - 6.56. CONDENSATE PIPE NOT PERMITTED TO REST ON THE GROUND - SECURE AND SUPPORT PER CODE REQUIREMENTS.
 - 6.57. CONDENSATE PIPE NOT PERMITTED TO REST ON THE GROUND - SECURE AND SUPPORT PER CODE REQUIREMENTS.
 - 6.58. CONDENSATE PIPE NOT PERMITTED TO REST ON THE GROUND - SECURE AND SUPPORT PER CODE REQUIREMENTS.
 - 6.59. CONDENSATE PIPE NOT PERMITTED TO REST ON THE GROUND - SECURE AND SUPPORT PER CODE REQUIREMENTS.
 - 6.60. CONDENSATE PIPE NOT PERMITTED TO REST ON THE GROUND - SECURE AND SUPPORT PER CODE REQUIREMENTS.
 - 6.61. CONDENSATE PIPE NOT PERMITTED TO REST ON THE GROUND - SECURE AND SUPPORT PER CODE REQUIREMENTS.
 - 6.62. CONDENSATE PIPE NOT PERMITTED TO REST ON THE GROUND - SECURE AND SUPPORT PER CODE REQUIREMENTS.
 - 6.63. CONDENSATE PIPE NOT PERMITTED TO REST ON THE GROUND - SECURE AND SUPPORT PER CODE REQUIREMENTS.
 - 6.64. CONDENSATE PIPE NOT PERMITTED TO REST ON THE GROUND - SECURE AND SUPPORT PER CODE REQUIREMENTS.
 - 6.65. CONDENSATE PIPE NOT PERMITTED TO REST ON THE GROUND - SECURE AND SUPPORT PER CODE REQUIREMENTS.
 - 6.66. CONDENSATE PIPE NOT PERMITTED TO REST ON THE GROUND - SECURE AND SUPPORT PER CODE REQUIREMENTS.
 - 6.67. CONDENSATE PIPE NOT PERMITTED TO REST ON THE GROUND - SECURE AND SUPPORT PER CODE REQUIREMENTS.
 - 6.68. CONDENSATE PIPE NOT PERMITTED TO REST ON THE GROUND - SECURE AND SUPPORT PER CODE REQUIREMENTS.
 - 6.69. CONDENSATE PIPE NOT PERMITTED TO REST ON THE GROUND - SECURE AND SUPPORT PER CODE REQUIREMENTS.
 - 6.70. CONDENSATE PIPE NOT PERMITTED TO REST ON THE GROUND - SECURE AND SUPPORT PER CODE REQUIREMENTS.
 - 6.71. CONDENSATE PIPE NOT PERMITTED TO REST ON THE GROUND - SECURE AND SUPPORT PER CODE REQUIREMENTS.
 - 6.72. CONDENSATE PIPE NOT PERMITTED TO REST ON THE GROUND - SECURE AND SUPPORT PER CODE REQUIREMENTS.
 - 6.73. CONDENSATE PIPE NOT PERMITTED TO REST ON THE GROUND - SECURE AND SUPPORT PER CODE REQUIREMENTS.
 - 6.74. CONDENSATE PIPE NOT PERMITTED TO REST ON THE GROUND - SECURE AND SUPPORT PER CODE REQUIREMENTS.
 - 6.75. CONDENSATE PIPE NOT PERMITTED TO REST ON THE GROUND - SECURE AND SUPPORT PER CODE REQUIREMENTS.
 - 6.76. CONDENSATE PIPE NOT PERMITTED TO REST ON THE GROUND - SECURE AND SUPPORT PER CODE REQUIREMENTS.
 - 6.77. CONDENSATE PIPE NOT PERMITTED TO REST ON THE GROUND - SECURE AND SUPPORT PER CODE REQUIREMENTS.
 - 6.78. CONDENSATE PIPE NOT PERMITTED TO REST ON THE GROUND - SECURE AND SUPPORT PER CODE REQUIREMENTS.
 - 6.79. CONDENSATE PIPE NOT PERMITTED TO REST ON THE GROUND - SECURE AND SUPPORT PER CODE REQUIREMENTS.
 - 6.80. CONDENSATE PIPE NOT PERMITTED TO REST ON THE GROUND - SECURE AND SUPPORT PER CODE REQUIREMENTS.
 - 6.81. CONDENSATE PIPE NOT PERMITTED TO REST ON THE GROUND - SECURE AND SUPPORT PER CODE REQUIREMENTS.
 - 6.82. CONDENSATE PIPE NOT PERMITTED TO REST ON THE GROUND - SECURE AND SUPPORT PER CODE REQUIREMENTS.
 - 6.83. CONDENSATE PIPE NOT PERMITTED TO REST ON THE GROUND - SECURE AND SUPPORT PER CODE REQUIREMENTS.
 - 6.84. CONDENSATE PIPE NOT PERMITTED TO REST ON THE GROUND - SECURE AND SUPPORT PER CODE REQUIREMENTS.
 - 6.85. CONDENSATE PIPE NOT PERMITTED TO REST ON THE GROUND - SECURE AND SUPPORT PER CODE REQUIREMENTS.
 - 6.86. CONDENSATE PIPE NOT PERMITTED TO REST ON THE GROUND - SECURE AND SUPPORT PER CODE REQUIREMENTS.
 - 6.87. CONDENSATE PIPE NOT PERMITTED TO REST ON THE GROUND - SECURE AND SUPPORT PER CODE REQUIREMENTS.
 - 6.88. CONDENSATE PIPE NOT PERMITTED TO REST ON THE GROUND - SECURE AND SUPPORT PER CODE REQUIREMENTS.
 - 6.89. CONDENSATE PIPE NOT PERMITTED TO REST ON THE GROUND - SECURE AND SUPPORT PER CODE REQUIREMENTS.
 - 6.90. CONDENSATE PIPE NOT PERMITTED TO REST ON THE GROUND - SECURE AND SUPPORT PER CODE REQUIREMENTS.
 - 6.91. CONDENSATE PIPE NOT PERMITTED TO REST ON THE GROUND - SECURE AND SUPPORT PER CODE REQUIREMENTS.
 - 6.92. CONDENSATE PIPE NOT PERMITTED TO REST ON THE GROUND - SECURE AND SUPPORT PER CODE REQUIREMENTS.
 - 6.93. CONDENSATE PIPE NOT PERMITTED TO REST ON THE GROUND - SECURE AND SUPPORT PER CODE REQUIREMENTS.
 - 6.94. CONDENSATE PIPE NOT PERMITTED TO REST ON THE GROUND - SECURE AND SUPPORT PER CODE REQUIREMENTS.
 - 6.95. CONDENSATE PIPE NOT PERMITTED TO REST ON THE GROUND - SECURE AND SUPPORT PER CODE REQUIREMENTS.
 - 6.96. CONDENSATE PIPE NOT PERMITTED TO REST ON THE GROUND - SECURE AND SUPPORT PER CODE REQUIREMENTS.
 - 6.97. CONDENSATE PIPE NOT PERMITTED TO REST ON THE GROUND - SECURE AND SUPPORT PER CODE REQUIREMENTS.
 - 6.98. CONDENSATE PIPE NOT PERMITTED TO REST ON THE GROUND - SECURE AND SUPPORT PER CODE REQUIREMENTS.
 - 6.99. CONDENSATE PIPE NOT PERMITTED TO REST ON THE GROUND - SECURE AND SUPPORT PER CODE REQUIREMENTS.
 - 6.100. CONDENSATE PIPE NOT PERMITTED TO REST ON THE GROUND - SECURE AND SUPPORT PER CODE REQUIREMENTS.
 7. REPLACE EXISTING DOOR HARDWARE WITH DAS APPROVED HARDWARE IN ELECTRICAL ROOM 008.
 8. SEE CALL FOR REBAR DETAIL.



1 ENLARGED UNDERGROUND PARKING PLAN
SCALE: 1/8" = 1'-0"

CONFIRMED SET - 04 OCT 2022

OREGON DEPT. OF ADMINISTRATIVE SERVICES
PARKING LOT UPGRADE PROJECT
HUMAN SERVICES BUILDING PARKING STRUCTURE
500 SUMMER STREET NE, SALEM, OREGON
ELECTRICAL ENLARGED PLAN

Fluent
ENGINEERING THROUGH DESIGN™
STEWARDSHIP THROUGH DESIGN™
2110 STATE STREET
SALMON CREEK, OR 97146
FLUENTENGINEERING.COM
503.366.8207

Locke
civ. & structural
ENGINEERS
289 SUMMER STREET, SUITE 103
Salem, Oregon 97338
503.366.8207

JOB NO. 20-108
DATE April 4, 2022
DESIGN BY BJB/M
CHECKED BY MJC
SHEET E14.12

04/04/2022 11:17 AM
 W:\2020\108_Human Services Building Parking Lot Upgrade\111481918 Electrical\Plan\