

REV.	DATE	DESCRIPTION
1	16 JUNE 2022	REVISIONS FOR CITY PLAN REVIEW

SHEET NOTES

A. SEE ANNOTATED NO. 10011 WORK AT THE SITE FOR FIELD NOTES TO BE IN CONFORMANCE WITH THE COORDINATE WITH RAYMOND JAMES STANTEC LABORATORY FOR ADDITIONAL INFORMATION.

B. SEE CALL FOR ADJUST, BEHALF, TRENCHING, AND SURFACE RECONSTRUCTION.

KEYED NOTES

- APPROXIMATE LOCATION OF ELECTRICAL EQUIPMENT
- PROPOSE RANDOMLY FOR FUTURE EV CHARGING STATIONS
- PROPOSE UNDERGROUND JACK AND ROUTE CONTROL RACKWAY TO THE LOCATION IN A MANNER THAT DOES NOT SHOW ENOUGH SPACE AREA FOR FUTURE WORKER ENTRANCE

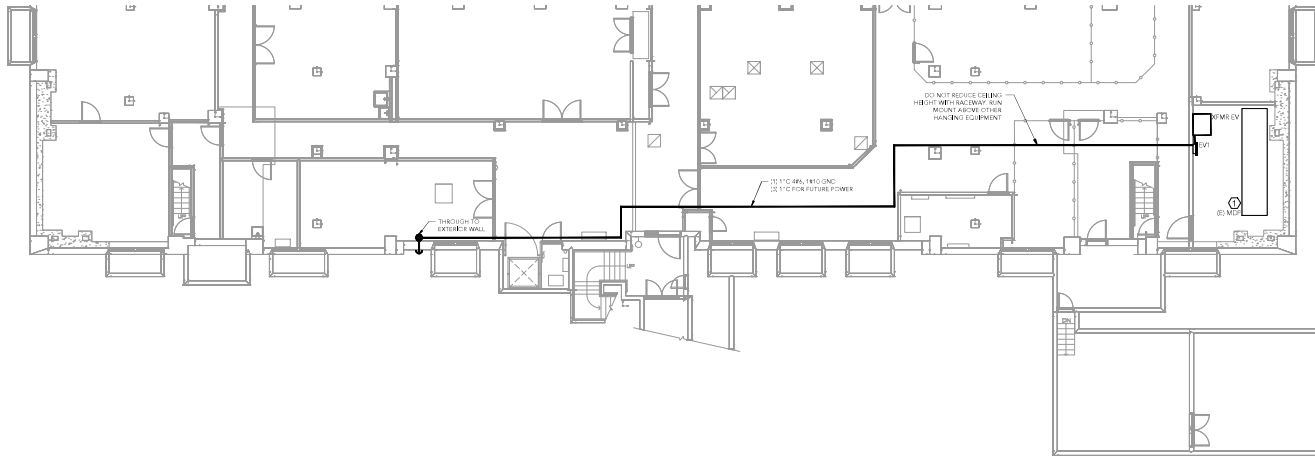


FLUENT ENGINEERING
 ENGINEERING THROUGH DESIGN™
 2110 STATE STREET
 SALLAMAN, OREGON 97146-4500
 503.364.8207
 FLUENTENGINEERING.COM
 400.500.5000 (FLUENT) (TOLL FREE)

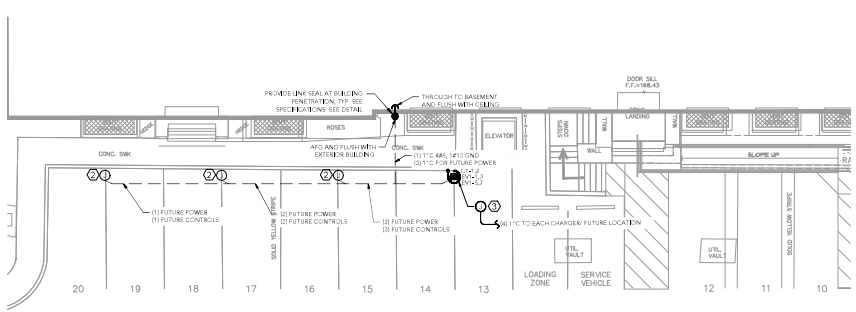
Locke CIVIL & STRUCTURAL ENGINEERS
 289 S. BULLOCK STREET, SUITE 103
 DALLAS, TEXAS 75238
 800.364.8207
 LockeEngineers.com

CONFORMED SET - 04 OCT 2022
 OREGON DEPT. OF ADMINISTRATIVE SERVICES
 PARKING LOT UPGRADE PROJECT
 JUSTICE BUILDING LOT
 1162 COURT STREET NE, SALEM OREGON
 ELECTRICAL LOT PLAN

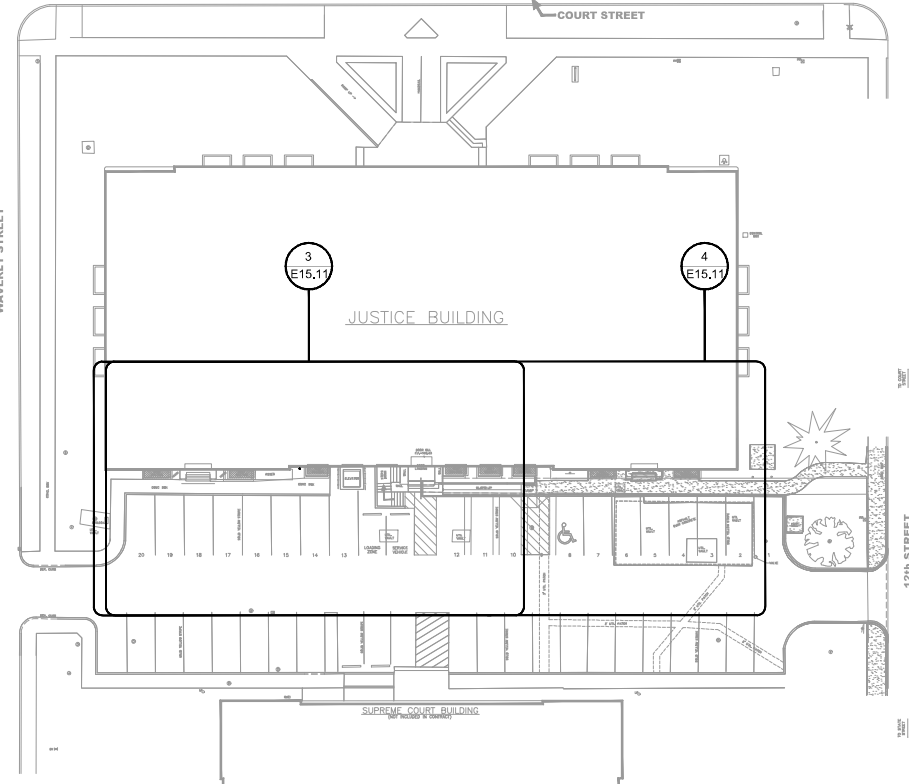
JOB NO.	20-108
DATE	April 4, 2022
DESIGN BY	BJEM
CHECKED BY	MJC
SHEET	E15.11



4 ENLARGED BASEMENT FLOOR PLAN
 SCALE: 1/8" = 1'-0"



3 ENLARGED FIRST FLOOR PLAN
 SCALE: 1/8" = 1'-0"



1 OVERALL LOT PLAN
 SCALE: 1/16" = 1'-0"

04/04/2022 11:17 AM
 W:\2020\108\Projects\108_Parking_Lot_Upgrade\108_Parking_Lot_Upgrade_13.dwg (R001) (L) (Sheet) Plotting