

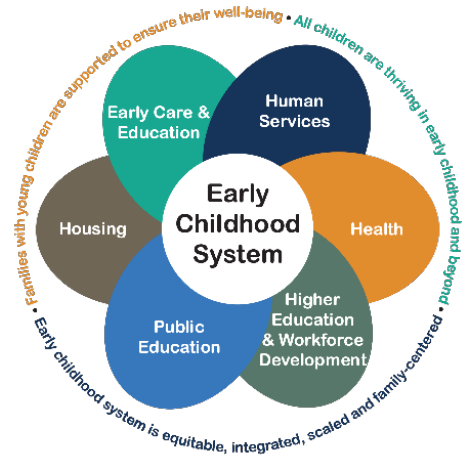
RAISE UP OREGON: A STATEWIDE EARLY CHILDHOOD SYSTEM PLAN

SECOND EDITION (2024-2028)
DRAFT JANUARY 2023

Context

Raise Up Oregon serves as Oregon's comprehensive state system plan for early childhood prenatal to age five, bringing together government leaders from early care and education, public education, higher education, health, housing, and human services. Grounded in equity and the science of child development, *Raise Up Oregon* builds the firm understanding that it takes leaders from every system - together with families, communities, and the public and private sectors - to work together during this critical period of children's lives.

Since the Oregon Early Learning Council (ELC) adopted *Raise Up Oregon* in 2019 as the five-year state early childhood system plan, partners in the work have made significant progress in implementing recommendations. With the first edition coming to a close, a second edition of *Raise Up Oregon* is underway to reflect the work accomplished so far, as well as today's reality, vision, and strategies. Driven by the ELC, the plan is created in partnership with six state agencies whose directors serve on the Council: Oregon Department of Education, Oregon Department of Early Learning and Care, Oregon Department of Human Services, Oregon Health Authority, Oregon Housing and Community Services, and the Higher Education Coordinating Commission.



When adopted in 2019, *Raise Up Oregon* was based on the following five core values to drive positive change for Oregon's youngest children and families:

1. Embed equity throughout by listening to diverse family experiences;
2. Represent all sectors within the early learning system that support children prenatal through age five and their families;
3. Provide comprehensive objectives and strategies that meet the needs of Oregon's young children and families;
4. Address the whole child, nested in family and community;
5. Focus on outcomes that support Oregon's young children and families.

Seeking Feedback of *Raise Up Oregon*, Second Edition

Over the last few years, partner agencies in *Raise Up Oregon* have engaged thousands of families, professionals, and community organizations to learn about Oregon's unique issues affecting the early childhood system. *Raise Up Oregon*, second edition is the response to support all families with young children prenatal to five based on the feedback they shared. This first draft of *Raise Up Oregon*, second edition shares proposed goals, strategies, and objectives that bring together the six state agencies to coordinate supports and lift up families so that their young children can be happy, healthy, and thriving.

This first draft of the second edition is now available for public feedback – we want to hear what families, professionals, and communities think the most important priorities are to address in the plan and if anything needs to be added or modified. After receiving public comment, the goals, strategies, and objectives will be finalized and more deeply illustrated with proposed actions that government agencies can take to reach shared early childhood system goals. The final version of *Raise Up Oregon: Second Edition* will be submitted to the Early Learning Council for approval in June 2023, with implementation beginning shortly thereafter.

**RAISE UP OREGON:
A STATEWIDE EARLY CHILDHOOD SYSTEM PLAN**
SECOND EDITION (2024-2028)
DRAFT JANUARY 2023

TABLE OF CONTENTS

| | |
|--|------|
| Raise Up Oregon, Second Edition Vision, Goals and Principles | p. 3 |
| Goal 1 Objectives and Strategies | p. 3 |
| Goal 2 Objectives and Strategies | p. 5 |
| Goal 3 Objectives and Strategies | p. 6 |

ABBREVIATIONS

Abbreviations used in the plan indicate which state agencies will be involved in the draft strategies.

| | |
|------|--|
| DELC | Oregon Department of Early Learning and Care |
| ODE | Oregon Department of Education |
| ODHS | Oregon Department of Human Services |
| OHA | Oregon Health Authority |
| OHCS | Oregon Housing and Community Services |
| HECC | Higher Education Coordinating Commission |

For more information:

Raise Up Oregon: A Statewide Early Learning State Plan (2019-2023)

Raise Up Oregon: 2nd Edition Roadmap

<https://oregonearlylearning.com/raise-up-oregon>

Contact us

earlylearning@state.or.us

RAISE UP OREGON: A STATEWIDE EARLY CHILDHOOD SYSTEM PLAN

SECOND EDITION (2024-2028)
DRAFT JANUARY 2023

Vision

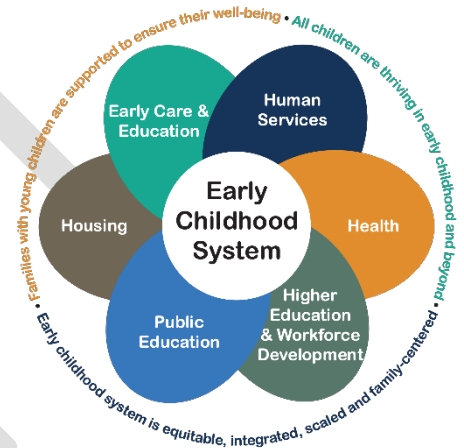
All of Oregon’s young children, prenatal to age five, experience an early start that results in positive health, educational, and life outcomes regardless of zip code, race, and family income.

Goals

1. The early childhood system is equitable, integrated, scaled, and family-centered.
2. All families with young children are supported to ensure their well-being.
3. All children are thriving in early childhood and beyond.

Principles

1. Ensure that the early childhood system embeds racial, economic, and geographic equity and inclusion
2. Build a system that addresses the whole child, nested in family and in community, and treats people with respect
3. Integrate community and family leadership and decision-making in the design and implementation of the early childhood system
4. Be jointly accountable across all sectors and work together to positively impact outcomes for young children and their families
5. Ensure equitable and affordable access to culturally-responsive services for young children and their families
6. Ensure high-quality implementation and continuous improvement of early childhood policy, program, funding, services, and practices for young children and their families



Goal 1: The early childhood system is equitable, integrated, scaled, and family-centered.

Objective 1. Multi-agency partnerships are developed at the state and local levels to systematically support improved, equitable outcomes and streamlined access for young children and their families.

- Strategy 1.1 Co-locate affordable housing and early childhood programs (OHCS, DELC, ODHS, OHA)
- Strategy 1.2 Coordinate supports for young children and their families across agencies in support of ODHS’ Family Preservation Initiative (ODHS, OHA, OHCS, DELC, ODE)
- Strategy 1.3 Increase access to One Eligibility to other programs serving young children and their families (ODHS, DELC, OHCS)
- Strategy 1.4 Create successful pathways for children’s enrollment and participation in Early Intervention/Early Childhood Special Education (EI/ECSE) through partnerships with the health, child welfare, and early learning and care sectors (ODHS, ODE, OHA, DELC)
- Strategy 1.5 Implement a locally developed, state-supported system to coordinate home visiting services (DELC, ODE, OHA, ODHS)

- Strategy 1.6 Implement expanded housing, food and climate supports as part of 1115 Medicaid waiver (OHA, OHCS, ODHS)
- Strategy 1.7 Align community engagement and culturally specific partnership strategies across all six agencies (HECC, OHA, ODE, ODHS, OHCS, DELC)
- Strategy 1.8 Advance higher education workforce solutions that meet early childhood system needs and support a diverse workforce (HECC, OHA, ODE, ODHS, OHCS, DELC)
- Strategy 1.9 Establish data use agreements and share data across state agencies (HECC, OHA, ODE, ODHS, OHCS, DELC)
- Strategy 1.10 Coordinate food supports across SNAP and WIC (ODHS, OHA)
- Strategy 1.11 Align early literacy development standards and practices between K-2 and early learning and care (ODE, DELC)

- Objective 2. Hubs are leveraged and resourced to advance regional early childhood systems that are equitable, integrated, scaled, and family-centered.
- Strategy 2.1 Hubs convene early childhood system partners across sectors, families, and community organizations to co-develop community strategic vision and plans, and to support partners in implementation and problem-solving (HECC, OHA, ODE, ODHS, OHCS, DELC)
- Strategy 2.2 Hubs engage families and community organizations, prioritizing those who are historically under-represented, in the development and implementation of equitable state early childhood policies and programs (HECC, OHA, ODE, ODHS, OHCS, DELC)
- Strategy 2.3 Hubs work with Early Learning Council and its partner state agencies to provide input on state design, implementation of the early childhood system, and development of Council priorities (HECC, OHA, ODE, ODHS, OHCS, DELC)
- Strategy 2.4 Agencies provide public resources to Hubs and engage their regional and local offices to successfully implement these strategies (HECC, OHA, ODE, ODHS, OHCS, DELC)

- Objective 3. The business and philanthropic communities champion and support the development of the early childhood system.
- Strategy 3.1 Build the supply of child care through public-private partnerships involving business, philanthropy, and state and local government (DELC, OHCS, HECC, ODHS)
- Strategy 3.2 Stimulate early childhood innovation and system building at local and state levels (HECC, OHA, ODE, ODHS, OHCS, DELC)
- Strategy 3.3 Support and expand services (e.g., paid leave, health insurance, apprenticeships, family wage jobs, home visiting) that promote families' wellbeing (HECC, OHA, ODE, ODHS, OHCS, DELC)

- Objective 4. Honor and recognize the sovereignty of the nine federally recognized Tribes within Oregon's borders and ensure strong government-to-government relationships to benefit Tribal communities.
- Strategy 4.1 Support implementation of the Oregon Tribal Early Learning Alliance (DELC)
- Strategy 4.2 Bring together all Tribal Affairs Coordinators across state agencies to coordinate work and align engagement strategies (HECC, OHA, ODE, ODHS, OHCS, DELC)
- Strategy 4.3 Promote and preserve Tribal culture in coordination with the Oregon Tribal Early Learning Alliance (DELC)

Goal 2: All families with young children are supported to ensure their well-being.

- Objective 5. Families with young children are supported in knowing about and accessing a full range of services that meet their needs and are culturally and linguistically responsive.
 - Strategy 5.1 Create or strengthen coordinated, family-centered intake and referral processes into home visiting, and from home visiting into other desired services (OHA, DELC, ODE, ODHS)
 - Strategy 5.2 Expand navigators/coordinators across the early childhood system (HECC, OHA, ODE, ODHS, OHCS, DELC)
 - Strategy 5.3 Promote co-location of services as a one-stop local strategy for service information and access (HECC, OHA, ODE, ODHS, OHCS, DELC)
 - Strategy 5.4 Support Connect Oregon statewide (OHA)
 - Strategy 5.5 Incorporate additional programs into One Eligibility (ODHS)
 - Strategy 5.6 Fully implement continuous Medicaid/Oregon Health Plan enrollment for children through age five (OHA)

- Objective 6. Families with young children have increased access to economic supports.
 - Strategy 6.1 End full family sanctions of Temporary Assistance for Needy Families (ODHS)
 - Strategy 6.2 Extend approval program for school lunches to children, including young children, enrolled in the Oregon Health Plan (ODHS, OHA, ODE)
 - Strategy 6.3 Support implementation of paid family leave and state Earned Income Tax Credit (HECC, OHA, ODE, ODHS, OHCS, DELC)

- Objective 7. Families have equitable access to support for their physical, social, emotional, behavioral, and oral health.
 - Strategy 7.1 Increase equitable access to reproductive, maternal, and prenatal health services (OHA)
 - Strategy 7.2 Improve access to culturally and linguistically responsive and specific, multi-generational approaches to physical, social, emotional, behavioral, and oral health (OHA, DELC, ODE, ODHS)
 - Strategy 7.3 Improve access to nutritional support including breastfeeding and WIC (OHA)
 - Strategy 7.4 Improve utilization of Community Health Workers and Doulas by strengthening their integration on care teams providing community-based access for families and through the development of sustainable payment models (OHA)

- Objective 8. Families have expanded access to culturally and linguistically responsive and specific family preservation strategies, resources and programs focused on the prenatal-to-five population.
 - Strategy 8.1 Increase access to Family Support and Connections services by expanding funding to recruit, support, and grow culturally specific programs to keep families together (ODHS)
 - Strategy 8.2 Continuously consult and coordinate with Tribes to collaborate on creating and funding services that meet the culturally specific needs of tribal communities and inform potential evidenced-based practices for implementation (ODHS)
 - Strategy 8.3 Increase access to evidence-based, culturally responsive, and specific early childhood programs (e.g., Relief Nurseries, parenting education, home visiting programs) proven

- to reduce abuse and neglect for families at imminent risk of entering into the child welfare system (ODHS, OHA, DELC)
- Strategy 8.4 Utilize data being collected from the Family Preservation work at ODHS to identify and address gaps/needs for families of color in order to prevent entry into foster care (ODHS)
- Strategy 8.5 Improve coordination between child welfare agencies and early learning and care programs (ODHS, DELC, OHA)

- Objective 9. Affordable housing is available statewide for families with young children.
- Strategy 9.1 Incorporate preferences through the Qualified Allocation Plan (QAP) and other affordable housing funding program frameworks for developers to build and provide units, spaces, and services required by families with young children (OHCS)
- Strategy 9.1 Incentivize developers in rural and other underserved areas to prioritize and work towards meeting the need for affordable housing for local families with young children (OHCS)
- Strategy 9.3 Identify and modify state and local regulations that are not related to safety and are barriers to co-locating affordable housing with services and resources that help families with young children thrive (OCHS, DELC)

- Objective 10. Parents and families are supported and engaged in enabling their children to thrive.
- Strategy 10.1 Expand parenting/family education (DELC, ODHS, OHA)
- Strategy 10.2 Scale all home visiting, prioritizing culturally responsive programs (DELC, ODE, OHA, ODHS)
- Strategy 10.3 Build or strengthen regional structures that ensure family leadership in the co-creation of policies, recommendations, and strategies that guide home visiting coordination (DELC, ODE, ODHS, OHA)
- Strategy 10.4 Increase equitable access for home visitors to access reflective supervision and training on cultural competency, families with special needs children, interpersonal violence, and mental health (DELC, ODE, OHA, ODHS)
- Strategy 10.5 Increase collaboration among home visitors, home visiting leaders, and cross-sector partners (OHA, DELC, ODE, ODHS)

Goal 3: All children are thriving in early childhood and beyond.

- Objective 11. Families have access to high-quality, culturally, and linguistically responsive birth to five pediatric health care services.
- Strategy 11.1 Ensure effective implementation of continuous birth-to-five Oregon Health Plan eligibility and enrollment (OHA)
- Strategy 11.2 Increase and improve equitable access to early childhood oral health (OHA)
- Strategy 11.3 Ensure birth-to-five health care services are comprehensive, accessible, high quality, and culturally and linguistically responsive (OHA)
- Strategy 11.4 Ensure trauma-informed care and resilience training and professional development for all pediatric providers participating in the Oregon Health Plan (OHA)

- Strategy 11.5 Require all pediatric providers participating in the Oregon Health Plan to screen for trauma history and resilience factors (OHA)
- Strategy 11.6 Increase the supply of clinical mental health providers who reflect the communities that they serve and are trained in and provide infant early childhood mental health clinical services (OHA, HECC, OHA)

- Objective 12. Families have access to high-quality, culturally, and linguistically responsive birth to five social and emotional supports.
- Strategy 12.1 Ensure trauma-informed care and resilience training and professional development for professionals working in pediatric physical health, behavioral health, child welfare, human services, home visiting, Early Intervention/Early Childhood Special Education (EI/ECSE), and early learning and care settings (OHA, ODHS, ODE, DELC)
- Strategy 12.2 Provide culturally responsive and culturally specific infant and early childhood mental health supports in early learning and care, home visiting, EI/ECSE, child welfare, health (OHA, DELC, ODHS, ODE, HECC)
- Strategy 12.3 Include social, emotional, and trauma-responsive screening in all health, child welfare, human services, EI/ECSE, early learning, and care programs, and home visiting programs (ODHS, OHA, ODE, DELC)

- Objective 13. Young children with developmental delays and disabilities are identified early and provided with inclusive services to reach their full potential.
- Strategy 13.1 Increase outreach and completed referrals for Early Intervention/Early Childhood Special Education (EI/ECSE) (ODE)
- Strategy 13.2 Broaden eligibility criteria for early intervention (ODE)
- Strategy 13.3 Increase the number of children with developmental delays and disabilities receiving services in typical early childhood settings (ODE, DELC)
- Strategy 13.4 Update EI/ECSE personnel standards to prepare professionals who provide services and support to young children who have developmental delays and disabilities and their families, across home, classroom, and community settings (ODE, HECC)
- Strategy 13.5 Strengthen the alignment of early childhood special education, early intervention services, early learning and care, health, and home visiting through coordinated governance (ODE, DELC, OHA)

- Objective 14. Families have access to high-quality (culturally responsive, inclusive, developmentally appropriate) affordable early learning and care that meets their needs.
- Strategy 14.1 Expand the supply of early learning and care, including workforce and facilities (DELC, OHCS, HECC)
- Strategy 14.2 Increase state support and investment in quality early learning and care (DELC)
- Strategy 14.3 Preserve and expand federal funding for quality early learning and care (DELC)
- Strategy 14.4 Improve professional development opportunities for the full diversity of the early learning and care workforce (DELC)
- Strategy 14.5 Build pathways to credentials and degrees that recruit and retain a diverse early learning and care workforce (DELC)

- Strategy 14.6 Ensure child care licensing and compliance is rooted in equity, facilitates the application approval process, and supports child care providers to be successful in caring for Oregon's children (DELIC)
- Strategy 14.7 Increase inclusion opportunities for children with developmental delays and disabilities in early care and education settings (DELIC, ODE)
- Strategy 14.8 Prevent suspension and expulsion in early learning and care settings through infant and early childhood mental health consultation and professional development supports (DELIC, OHA, ODE)
- Strategy 14.9 Reduce family financial burden for access to early learning and care (DELIC)
- Strategy 14.10 Implement the Co-location Fund for affordable housing and early learning and care, and expand statewide (OHCS, DELIC)

- Objective 15. The early childhood workforce is diverse, culturally responsive, high quality, and well compensated.
 - Strategy 15.1 Improve professional development opportunities for the full diversity of the early childhood workforce (DELIC, OHA, ODHS, ODE, HECC)
 - Strategy 15.2 Build pathways to credentials and degrees that recruit and retain a diverse early childhood workforce (DELIC, OHA, ODHS, ODE, HECC)
 - Strategy 15.3 Develop and resource approaches for retention of the early childhood workforce including increased compensation, mental health support, ongoing training and coaching, and supervision.

- Objective 16. Children and families experience supportive transitions and continuity of services across early learning and care and public education (K-12) settings.
 - Strategy 16.1 Update the Early Learning and Kindergarten Guidelines to ensure a consistent framework across educational settings (ODE, DELIC)
 - Strategy 16.2 Establish an integrated system of support for the provision of joint professional development opportunities for the early learning and care workforce and k-2 educators (ODE, DELIC)
 - Strategy 16.3 Align policies and programs to provide supportive transitions and continuity of services from early care and education to K-12 settings. (ODE, DELIC)