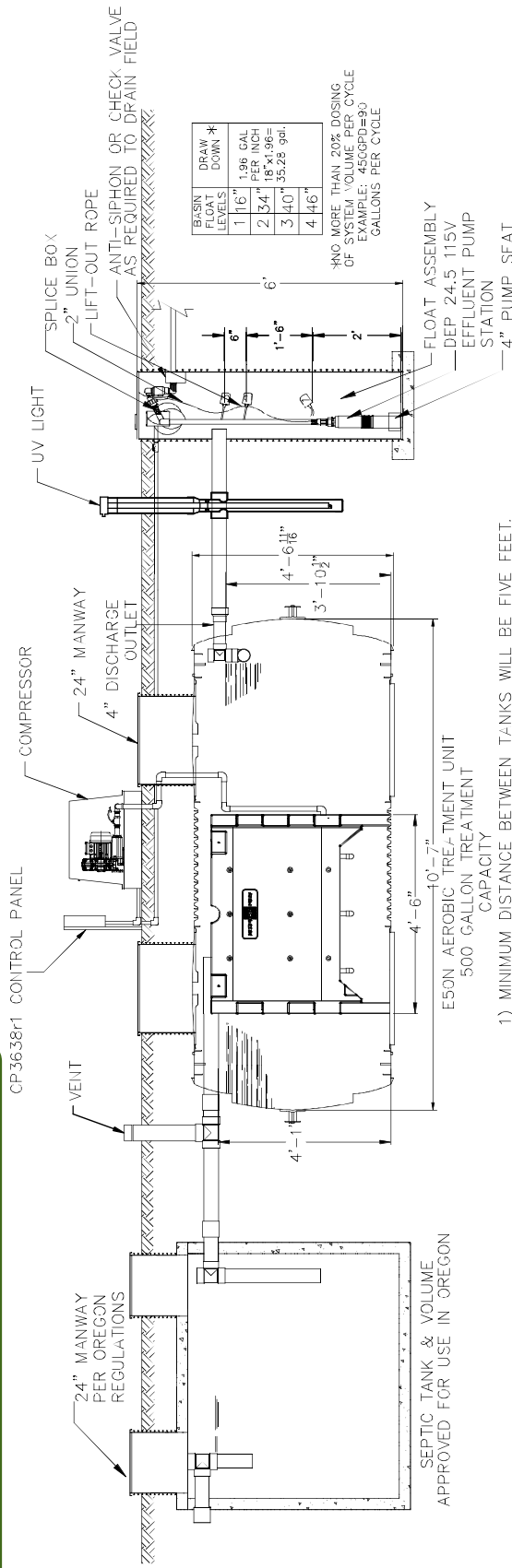


\*NO MORE THAN 20% DOSING OF SYSTEM VOLUME PER CYCLE  
 EXAMPLE: 450GPD = 90 GALLONS PER CYCLE.

**APPROVED**  
 By Randy Trox at 1:31 pm, Nov 23, 2015



- 1) MINIMUM DISTANCE BETWEEN TANKS WILL BE FIVE FEET.
- 2) ELEVATION LEVEL BETWEEN TANKS PER OREGON STATE RULES.
- 3) PIPE SIZE TO DRAIN FIELD PER OREGON STATE REGULATIONS.
- 4) ALL TANKS MUST BE WATERTIGHT.
- 5) UV AS SHOWN ON DRAWING WHEN FECAL REDUCTION BELOW 400mg/L IS REQUIRED.

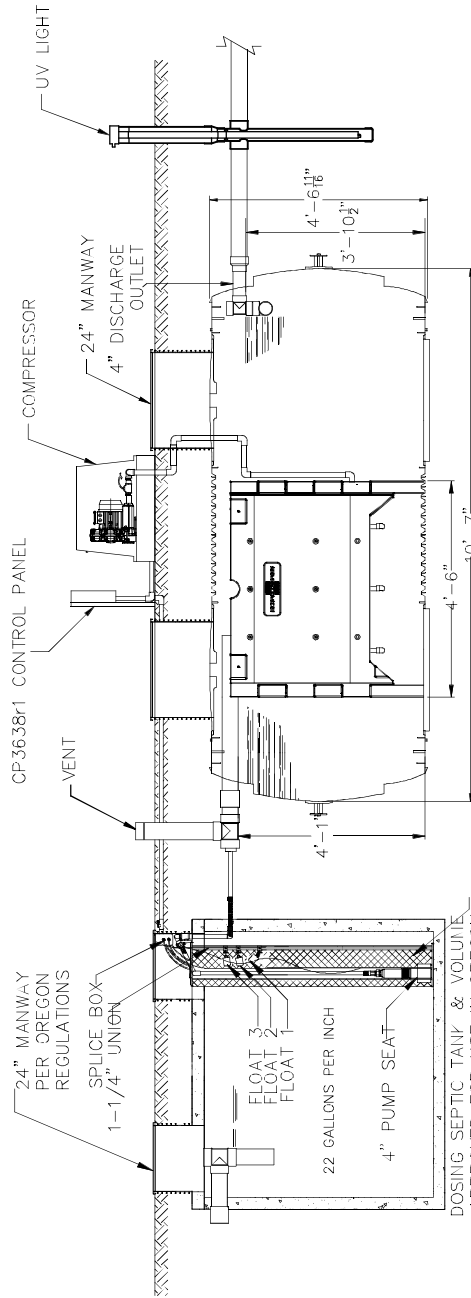
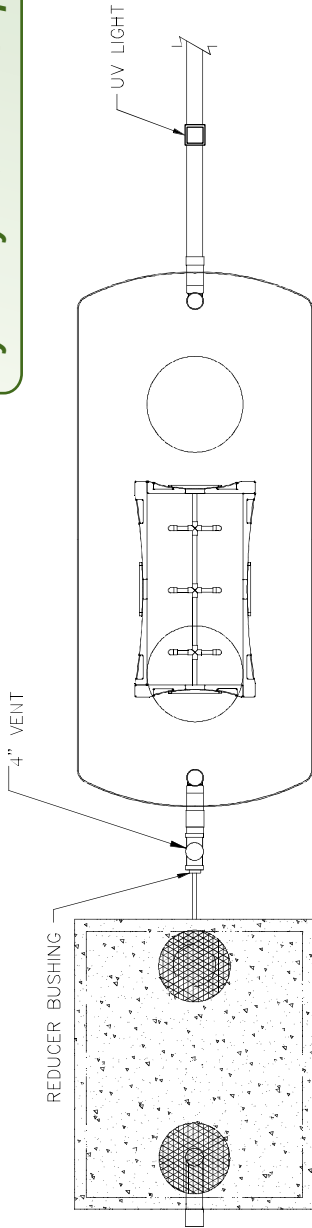
\*NOTE: ALL EXTERIOR PIPE SIZE AS PER OREGON REQUIREMENTS  
 \*NOTE: THE VOLUME OF THE SEPTIC TANK WILL BE AS REQUIRED IN OAR 340-071-2220(3)

**CONFIGURATION 1**

		<b>DELTA ECOPOD-N 500 GPD UNIT          W/ OREGON APPROVED SEPTIC TANK &amp;          DEP24.5115V HIGH HEAD PUMP STATION</b>	
PLOT SCALE <b>NTS</b>	DRAWING NUMBER <b>DEP248A E50N</b>	DRAWN BY <b>L.CUTRER</b>	DATE <b>04/24/15</b>
REVISION DESCRIPTION COMPANY CONFIDENTIAL: INFORMATION CONTAINED HEREIN IS CONFIDENTIAL, IT IS THE PROPERTY OF PENTAIR PUMP GROUP, IT IS TO BE USED SOLELY FOR THE PURPOSE PROVIDED, AND IT IS NOT TO BE DISCLOSED TO OTHERS WITHOUT THE PRIOR WRITTEN CONSENT OF PENTAIR PUMP GROUP.	SHEET OF <b>1 1</b>	REV <b>A</b>	

**APPROVED**

By Randy Trox at 1:32 pm, Nov 23, 2015

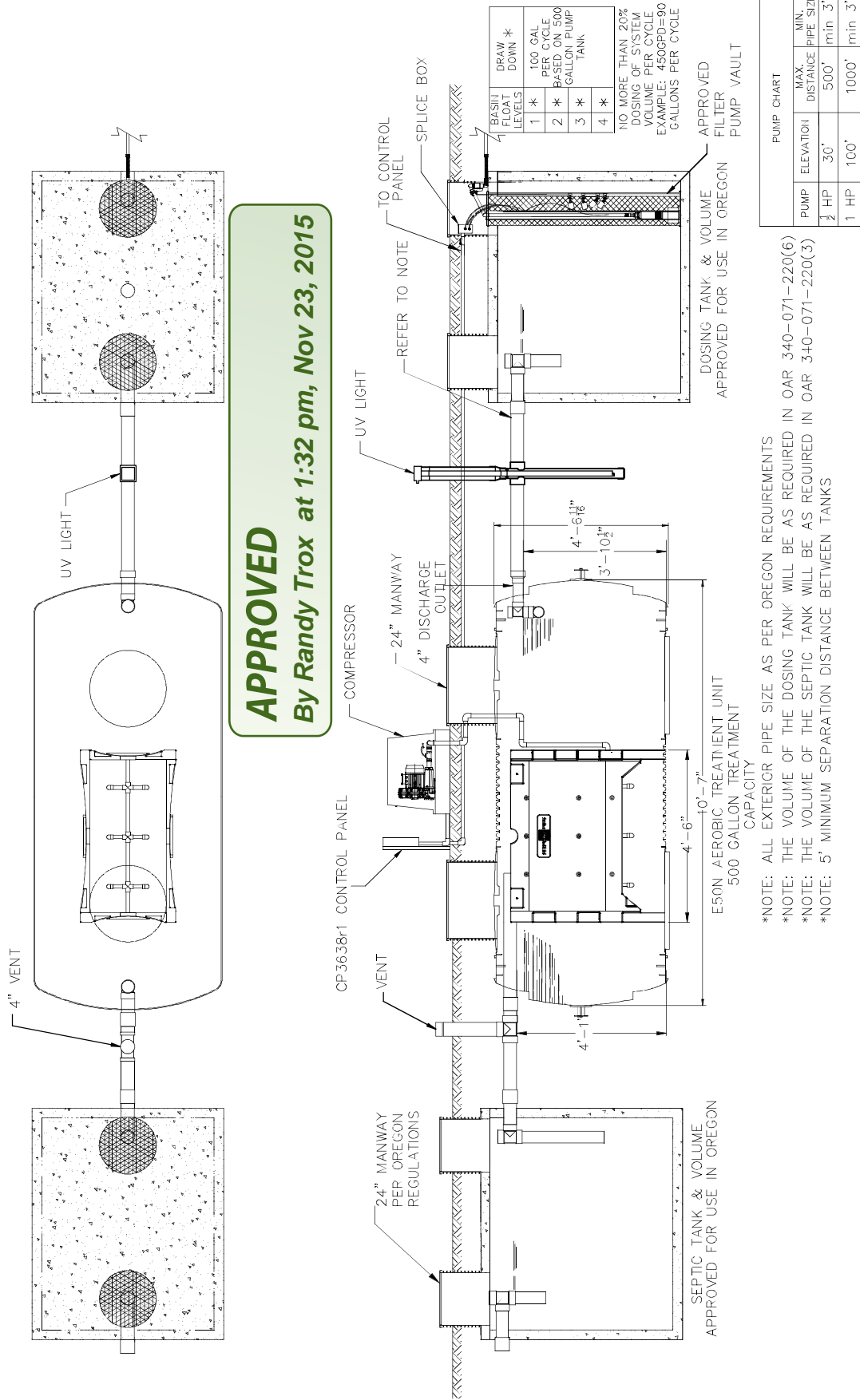


E50N AEROBIC TREATMENT UNIT  
500 GALLON TREATMENT CAPACITY

- \*NOTE: 5' MINIMUM SEPARATION DISTANCE BETWEEN TANKS.
- \*NOTE: THE VOLUME OF THE SEPTIC TANK WILL BE AS REQUIRED ON OAR 340-071-2220 (3)
- \*NOTE: ALL EXTERIOR PIPE SIZE AS PER OREGON REQUIREMENTS

CONFIGURATION 2

		<b>DELTA ECOPOD 500 GPD UNIT W/ OREGON APPROVED DOSING SEPTIC TANK</b>	
PLOT SCALE NTS	DRAWING NUMBER DEP248A E50N	DRAWN BY L.CUTRER	DATE 04/24/15
REVISION DESCRIPTION BY	SHEET OF 1 OF 1	REV	A
<small>COMPANY CONFIDENTIAL: INFORMATION CONTAINED HEREIN IS CONFIDENTIAL, IT IS THE PROPERTY OF PENTAIR PUMP GROUP, IT IS TO BE USED SOLELY FOR THE PURPOSE PROVIDED, AND IT IS NOT TO BE DISCLOSED TO OTHERS WITHOUT THE PRIOR WRITTEN CONSENT OF PENTAIR PUMP GROUP.</small>			

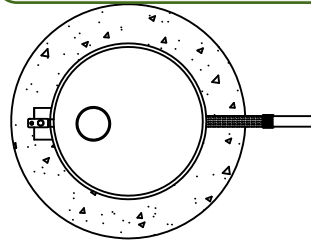


CONFIGURATION 3

		<b>DELTA ECOPOD 500 GPD UNIT W/ OREGON APPROVED SEPTIC TANK &amp; DOSING TANK</b>	
PLOT SCALE NTS	DRAWING NUMBER DEP248A E50N	DRAWN BY L.CUTRER	DATE 04/24/15
REVISION DESCRIPTION BY	SHEET OF	SHEET 1 OF 1	REV A
COMPANY CONFIDENTIAL: INFORMATION CONTAINED HEREIN IS CONFIDENTIAL, IT IS THE PROPERTY OF PENTAIR PUMP GROUP, IT IS TO BE USED SOLELY FOR THE PURPOSE PROVIDED, AND IT IS NOT TO BE DISCLOSED TO OTHERS WITHOUT THE PRIOR WRITTEN CONSENT OF PENTAIR PUMP GROUP.			

**INSTALLATION**

1. The basin is plastic pipe with sealed fiberglass bottom and optional anti-floatation ring to prevent basin from floating up in high water conditions. Do not leave basin in unfilled hole without concrete as ground water or rain may float basin up breaking inlet, discharge and electrical conduit connections.
2. A 3' dia. x 4" thk. concrete base is required for anchoring purposes.

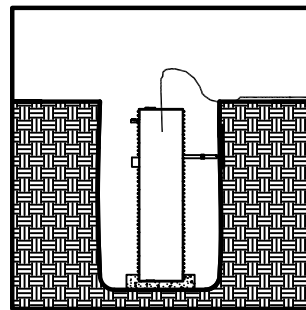
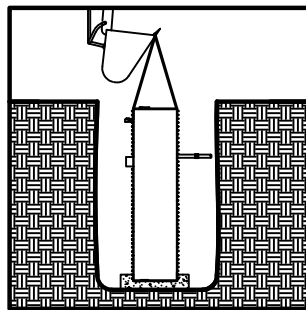
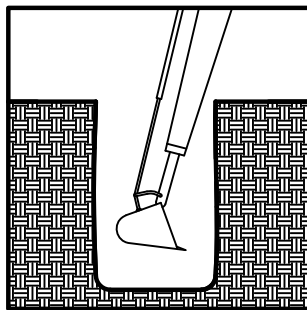
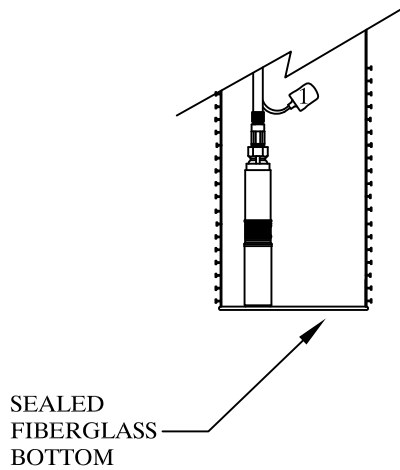
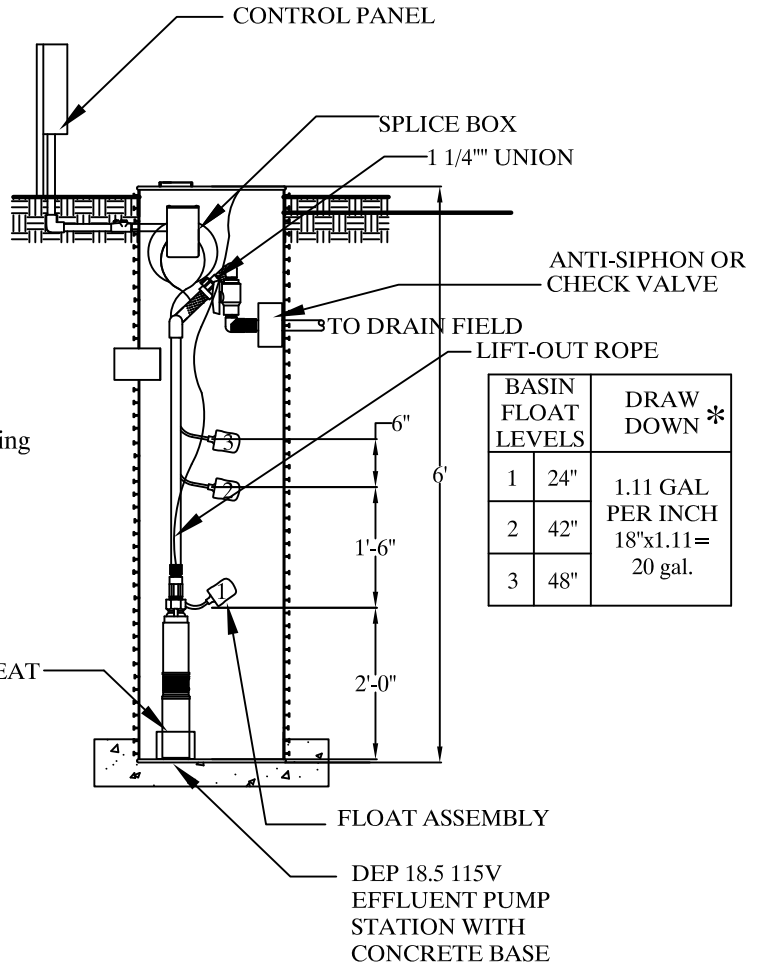


**ELECTRICAL ASSEMBLY**

1. Connect level control and pump power cords to junction box as shown in diagram. Make certain all compression fittings are tight.
2. Install control panel.
3. Run wires to control panel through conduit and connect cords coming into connection box. Mark or trace each incoming wire so that it can be connected to the proper cord.

**STARTING SYSTEM**

1. Open ball valve.
2. Run water into basin until the "ON" level control starts the pump. Allow pump to operate until sump level drops, deactivating "OFF" level control, stopping pump.



REV.	DATE	REVISION DESCRIPTION	BY

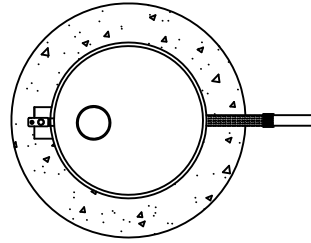
**Delta Environmental™**  
Pentair Water

**DEP 18.5 115V EFFLUENT PUMP STATION INSTALLATION PROCEDURE**

COMPANY CONFIDENTIAL: INFORMATION CONTAINED HEREIN IS CONFIDENTIAL, IT IS THE PROPERTY OF PENTAIR PUMP GROUP, IT IS TO BE USED SOLELY FOR THE PURPOSE PROVIDED, AND IT IS NOT TO BE DISCLOSED TO OTHERS WITHOUT THE PRIOR WRITTEN CONSENT OF PENTAIR PUMP GROUP.	PLOT SCALE NTS	DRAWING NUMBER DEP287-18.5EP	DRAWN BY D. WRIGHT	DATE 09/04/12	SHEET OF 1 OF 1	REV A
--	-------------------	---------------------------------	-----------------------	------------------	--------------------	----------

**INSTALLATION**

1. The basin is plastic pipe with sealed fiberglass bottom and optional anti-floatation ring to prevent basin from floating up in high water conditions. Do not leave basin in unfilled hole without concrete as ground water or rain may float basin up breaking inlet, discharge and electrical conduit connections.
2. A 3' dia. x 4" thk. concrete base is required for anchoring purposes.

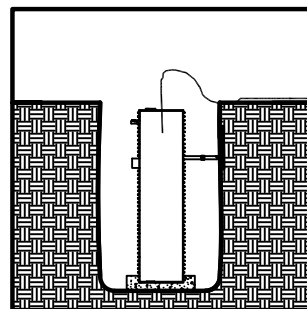
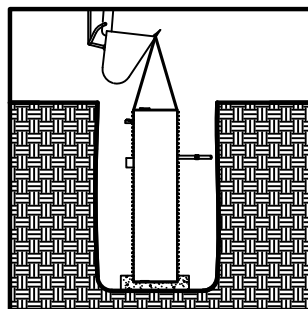
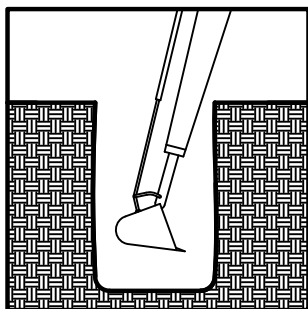
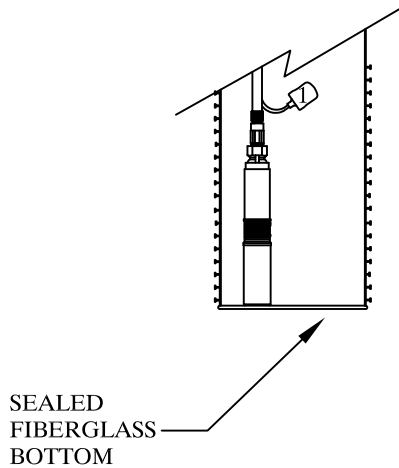
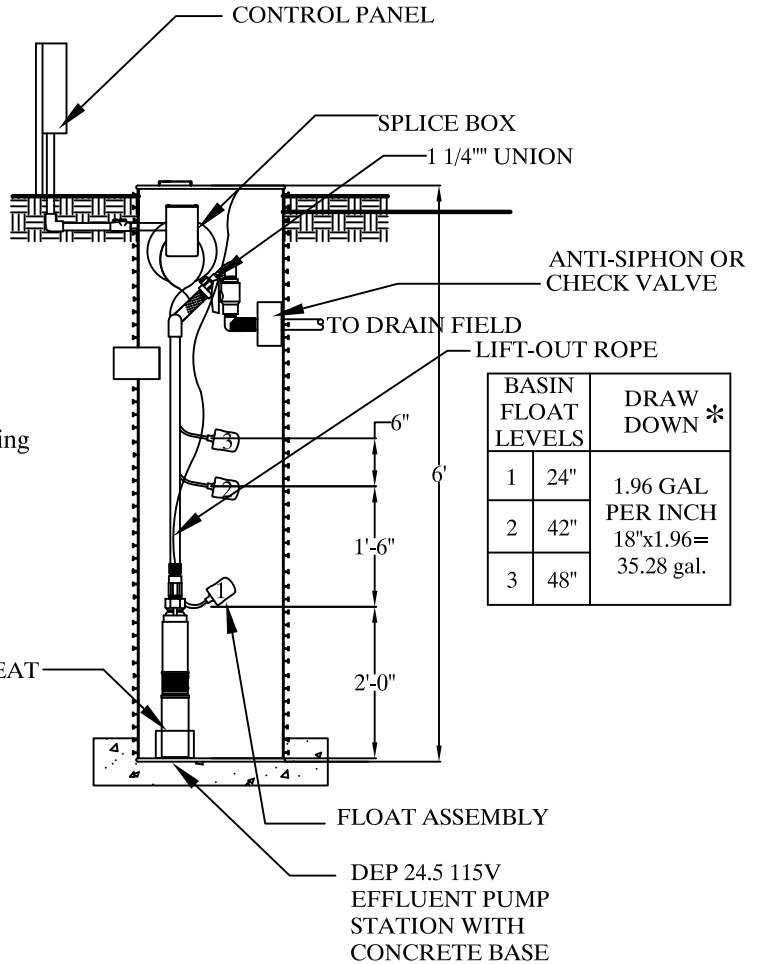


**ELECTRICAL ASSEMBLY**

1. Connect level control and pump power cords to junction box as shown in diagram. Make certain all compression fittings are tight.
2. Install control panel.
3. Run wires to control panel through conduit and connect cords coming into connection box. Mark or trace each incoming wire so that it can be connected to the proper cord.

**STARTING SYSTEM**

1. Open ball valve.
2. Run water into basin until the "ON" level control starts the pump. Allow pump to operate until sump level drops, deactivating "OFF" level control, stopping pump.



REV.	DATE	REVISION DESCRIPTION	BY

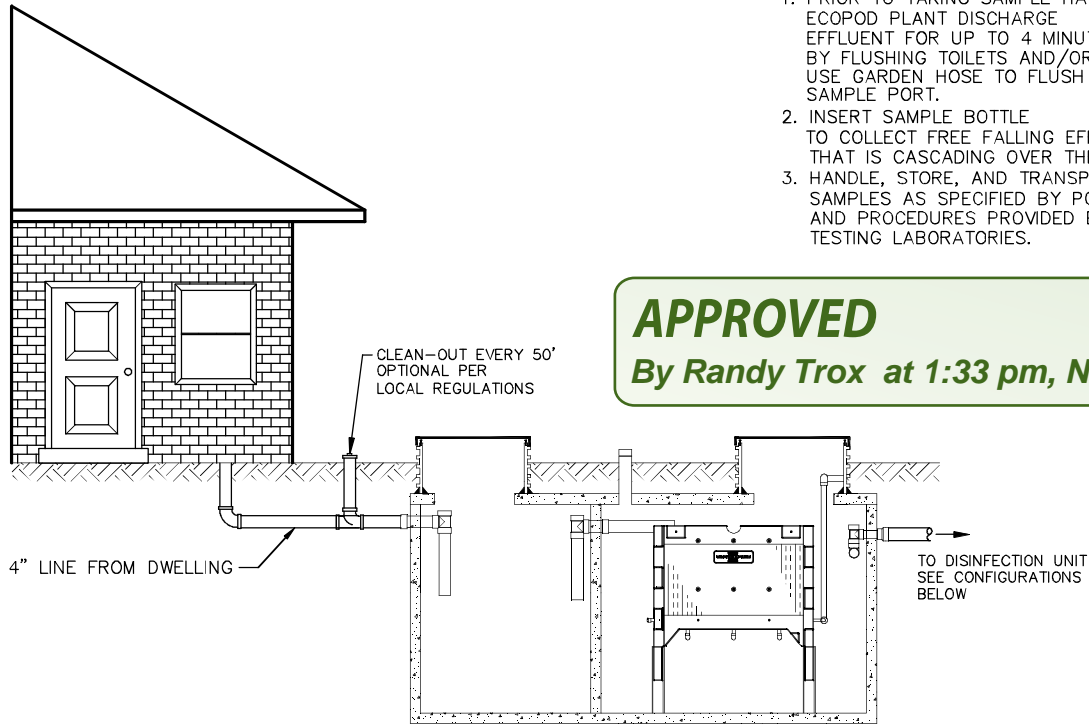
**Delta Environmental™**  
Pentair Water

**DEP 24.5 115V EFFLUENT PUMP STATION INSTALLATION PROCEDURE**

COMPANY CONFIDENTIAL: INFORMATION CONTAINED HEREIN IS CONFIDENTIAL, IT IS THE PROPERTY OF PENTAIR PUMP GROUP, IT IS TO BE USED SOLELY FOR THE PURPOSE PROVIDED, AND IT IS NOT TO BE DISCLOSED TO OTHERS WITHOUT THE PRIOR WRITTEN CONSENT OF PENTAIR PUMP GROUP.	PLOT SCALE NTS	DRAWING NUMBER DEP287-EPN	DRAWN BY D. WRIGHT	DATE 09/04/12	SHEET OF 1 OF 1	REV A
--	-------------------	------------------------------	-----------------------	------------------	--------------------	----------

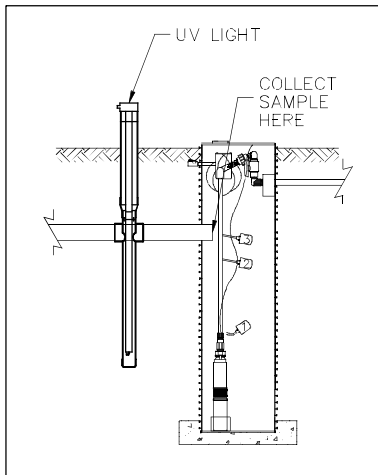
SAMPLE PROCEDURES:

1. PRIOR TO TAKING SAMPLE HAVE ECOPOD PLANT DISCHARGE EFFLUENT FOR UP TO 4 MINUTES BY FLUSHING TOILETS AND/OR USE GARDEN HOSE TO FLUSH OUT SAMPLE PORT.
2. INSERT SAMPLE BOTTLE TO COLLECT FREE FALLING EFFLUENT THAT IS CASCADING OVER THE EDGE.
3. HANDLE, STORE, AND TRANSPORT SAMPLES AS SPECIFIED BY POLICIES AND PROCEDURES PROVIDED BY THE TESTING LABORATORIES.

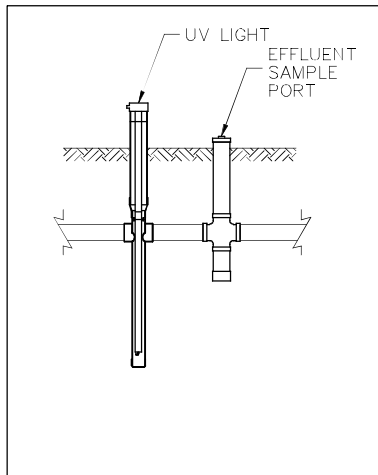


**APPROVED**  
*By Randy Trox at 1:33 pm, Nov 23, 2015*

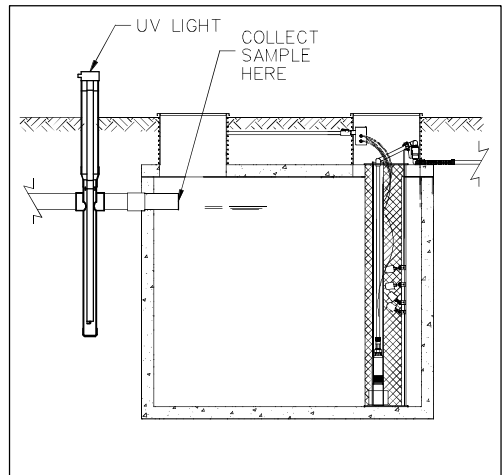
SAMPLE PORTS FOR UV CONFIGURATIONS



CONFIGURATION 1



CONFIGURATION 2



CONFIGURATION 3

REV.	DATE	REVISION DESCRIPTION	BY



SAMPLE PORTS FOR UV CONFIGURATIONS

COMPANY CONFIDENTIAL: INFORMATION CONTAINED HEREIN IS CONFIDENTIAL, IT IS THE PROPERTY OF PENTAIR PUMP GROUP, IT IS TO BE USED SOLELY FOR THE PURPOSE PROVIDED, AND IT IS NOT TO BE DISCLOSED TO OTHERS WITHOUT THE PRIOR WRITTEN CONSENT OF PENTAIR PUMP GROUP.

PLOT SCALE NTS	DRAWING NUMBER EP SAMP PORTS	DRAWN BY L.CUTRER	DATE 9/22/15	SHEET OF 1 OF 1	REV A
-------------------	---------------------------------	----------------------	-----------------	--------------------	----------