



# Oregon

Kate Brown, Governor

## Department of State Lands

775 Summer Street NE, Suite 100

Salem, OR 97301-1279

(503) 986-5200

FAX (503) 378-4844

[www.oregon.gov/dsl](http://www.oregon.gov/dsl)

### State Land Board

Kate Brown  
Governor

Shemia Fagan  
Secretary of State

Tobias Read  
State Treasurer

## State Land Board

**Regular Meeting  
October 12, 2021  
Agenda Item 3**

### **SUBJECT**

Request for approval to initiate due diligence for a potential exchange of land at West Hayden Island in Multnomah County with the Port of Portland (DSL file 55904-LE). The land is located at Township 2 North, Range 1 East, Sections 19, 28, 29 and 30, and Township 2 North, Range 1 West, Section 24.

### **ISSUE**

Whether the State Land Board should authorize the Department to initiate due diligence to reach a final determination of DSL's ownership of filled land at the site and to prepare to exchange land with the Port of Portland.

### **AUTHORITY**

Oregon Constitution, Article VIII, Sections 2 and 5; pertaining to the Common School Fund and land management responsibilities of the State Land Board.

ORS 273.055; relating to the power to acquire and dispose of real property.

ORS 273.171; relating to the duties and authority of the Director.

ORS 274.915; relating to the sale, lease or trade of submersible and submerged lands.

OAR 141-068; relating to the sale, exchange or reservation of historically filled land.

Real Estate Asset Management Plan (REAMP), adopted by the Land Board; February 2012

## **SUMMARY**

On September 1, 2021, DSL received an application from the Port of Portland to exchange land owned on West Hayden Island. The Port acquired the center portion of the island in 1996. Over the years, portions of the waterfront have been filled or had accretion. Although there have been numerous ownership studies over the years, the ownership of some of the outer edges of West Hayden Island remains unclear.

DSL will be asking David Evans and Associates to review newly found aeriels of the property with the intent of finalizing its ownership of the property. The Port would like to consolidate its land on the island and would like to exchange some of its land on the southern side of the island for land on the northern edge of the island. Until a final determination is reached on DSL's ownership on the island, the acreages involved are uncertain.

Once the ownership has been determined and a plan for the potential exchange of land created, a report will be given to the Land Board before proceeding further.

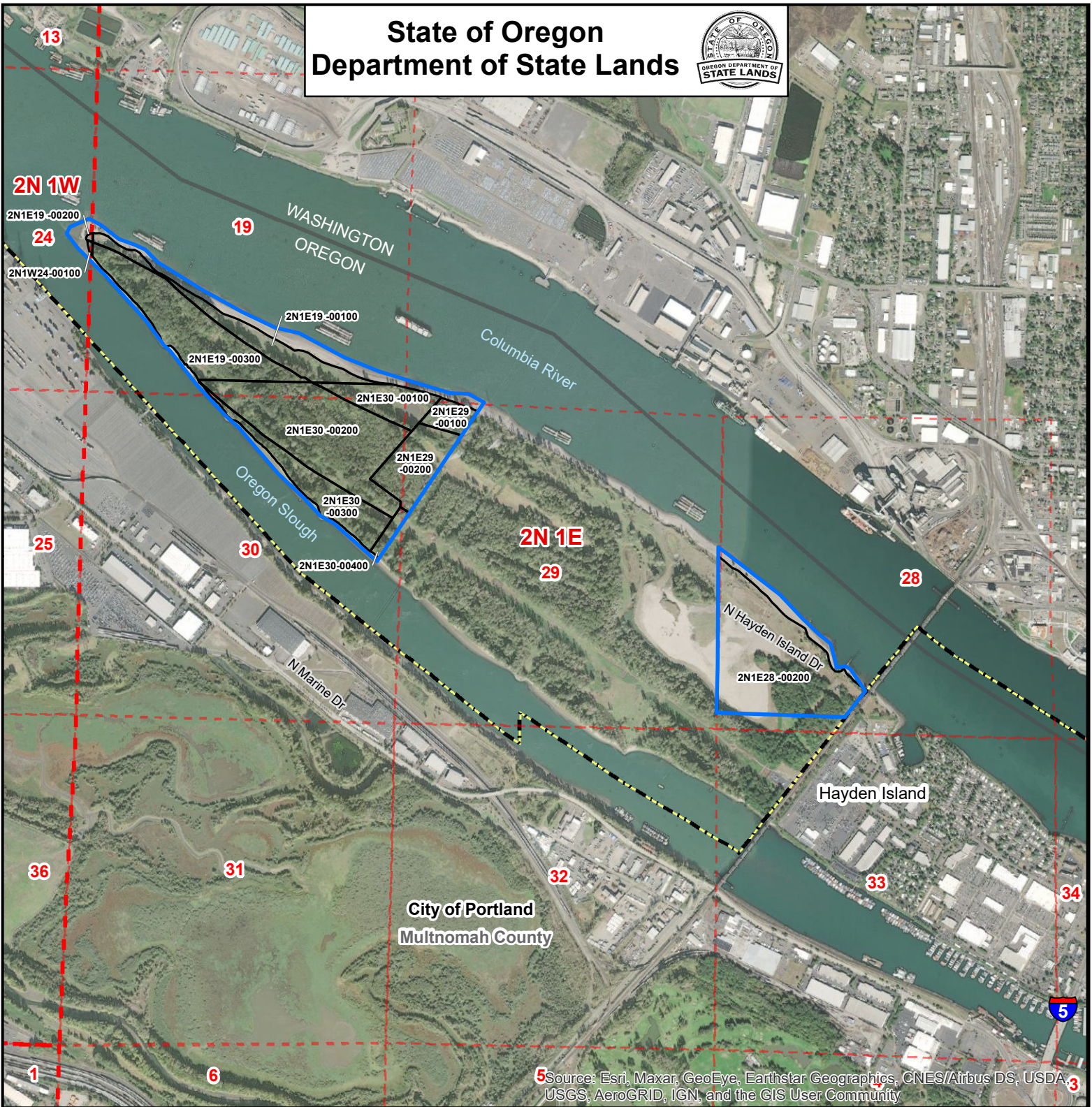
## **RECOMMENDATION**

The Department recommends that the State Land Board authorize the initiation of due diligence to determine DSL's ownership at West Hayden Island for a potential exchange of land in Multnomah County.

## **APPENDICES**

A. Map of the Due Diligence Area

# State of Oregon Department of State Lands



5 Source: Esri, Maxar, GeoEye, Earthstar Geographics, CNES/Airbus DS, USDA, USGS, AeroGRID, IGN, and the GIS User Community

## APPENDIX A

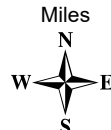
55904-LE Land Exchange  
Between DSL and Port of Portland  
T2N, R1E, Sec. 19, 28, 29 and 30, and T2N, R1W, Sec. 24  
Multnomah County

- Due Diligence Areas
- Tax Lots
- Townships
- Sections
- City Limits

This map depicts the approximate location and extent of a Department of State Lands Proprietary authorization for use. This product is for informational purposes only and may not have been prepared for, or be suitable for legal, engineering, or surveying purposes. Users of this information should review or consult the primary data and information sources to ascertain the usability of the information.

0 0.25 0.5

Miles



Map Projection:  
Oregon Statewide Lambert  
Datum NAD83  
International Feet  
  
State of Oregon  
Department of State Lands  
1645 NE Forbes Rd. Suite 112  
Bend, OR 97701  
541-388-6112  
[www.oregon.gov/DSL](http://www.oregon.gov/DSL)  
Date: 11/19/2021

