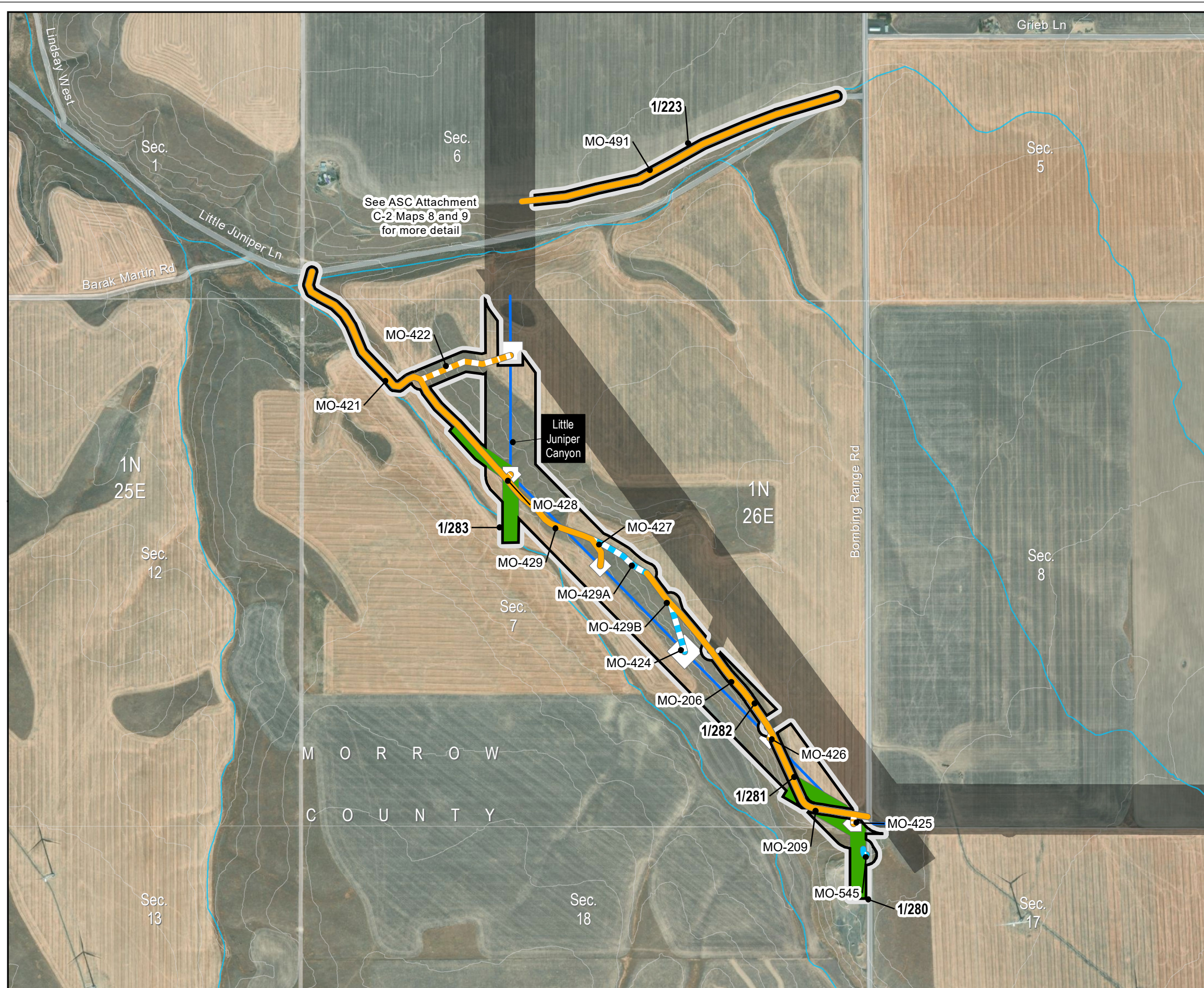


Boardman to Hemingway
Transmission Project
Request for Amendment 1

Figure 4-1
RFA1 Site Boundary Changes

Little Juniper Canyon
Morrow County

Map 1



See ASC Attachment
C-2 Maps 8 and 9
for more detail

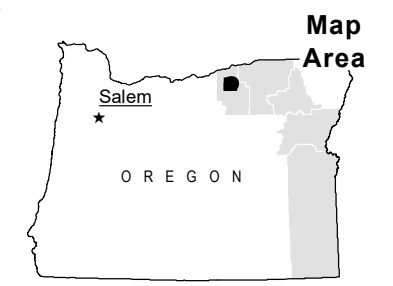
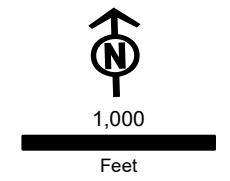
- Project Features**
- New RFA1 Site Boundary
 - Site Boundary Approved in Site Certificate
 - Transmission Centerline (Revised Alignment)
- Access**
- Existing Road, Substantial Modification, 21-70% Improvements
 - New Road, Bladed
 - New Road, Primitive
- Work Areas**
- Pulling and Tensioning
 - Structure Work Area
- Important Siting Constraints and Other Features**
- 20-ft Contours
 - Stream
 - Public Roads
- Land Status**
- Private

Notes:
Not intended for construction or any uses other than intended purpose.

Project features current as of March 9, 2023.

Data Source(s):
BLM, Esri, NPS, ODOT, USGS, Velocity

Imagery:
Source: Esri, Maxar, Earthstar Geographics, and the GIS User Community

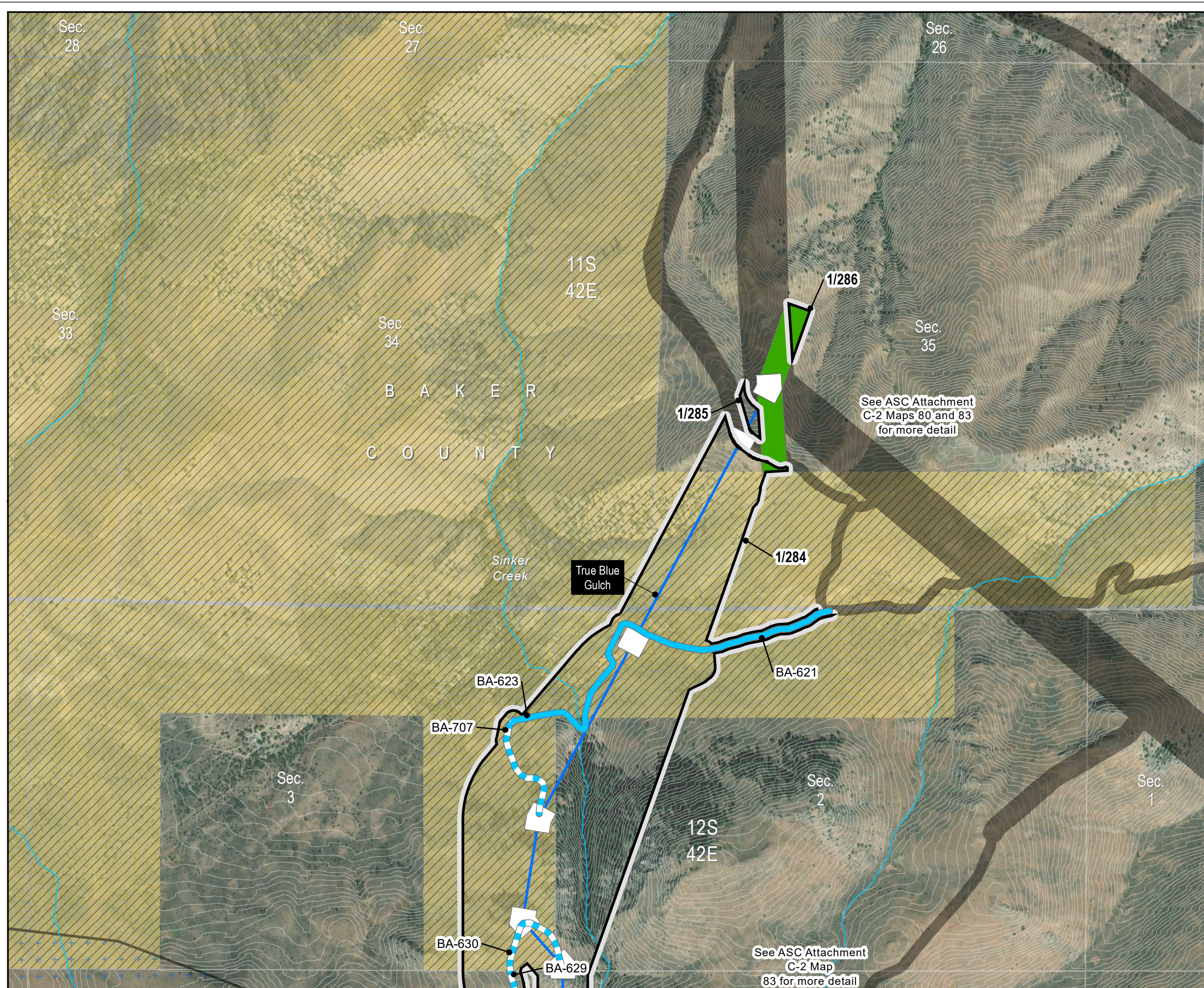


Boardman to Hemingway
Transmission Project
Request for Amendment 1

Figure 4-1
RFA1 Site Boundary Changes

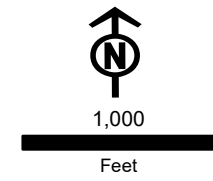
True Blue Gulch
Baker County

Map 2



- | | |
|---|---------------------------|
| Project Features | Land Status |
| New RFA1 Site Boundary | Bureau of Land Management |
| Site Boundary Approved in Site Certificate | Private |
| Transmission Centerline (Revised Alignment) | |
| Access | |
| Existing Road, Substantial Modification, 71-100% Improvements | |
| New Road, Bladed | |
| Work Areas | |
| Pulling and Tensioning | |
| Structure Work Area | |
| Important Siting Constraints and Other Features | |
| 20-ft Contours | |
| Stream | |
| Elk Winter Range | |
| VRM Class 2 | |

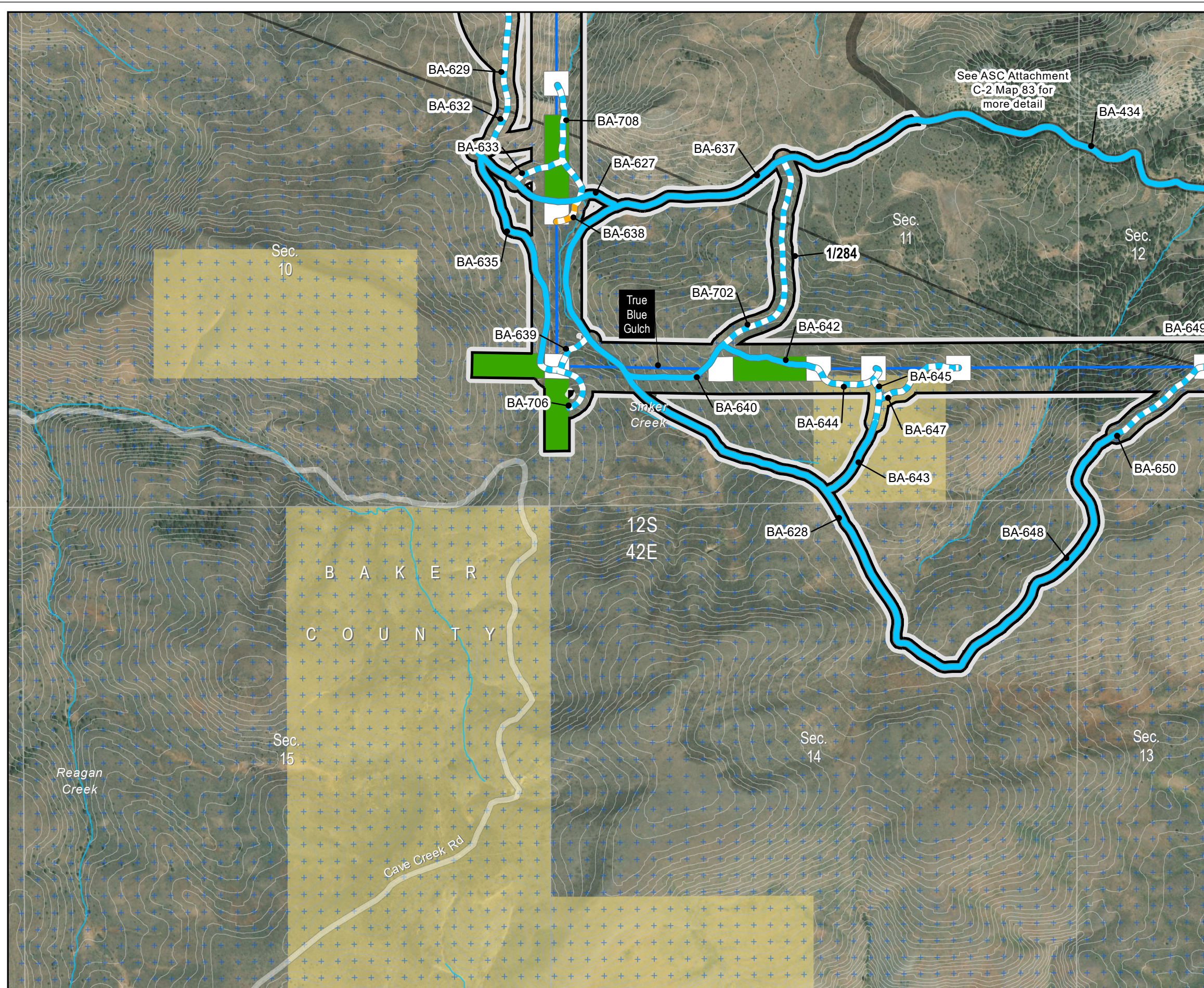
Notes:
Not intended for construction or any uses other than intended purpose.
Project features current as of March 9, 2023.
Data Source(s):
BLM, Esri, NPS, ODOT, USGS, Velocity
Imagery:
Source: Esri, Maxar, Earthstar Geographics, and the GIS User Community



**Figure 4-1
RFA1 Site Boundary Changes**

True Blue Gulch
Baker County

Map 3



- | Project Features | | Land Status | |
|---|---|-------------|---------------------------|
| | New RFA1 Site Boundary | | Bureau of Land Management |
| | Site Boundary Approved in Site Certificate | | Private |
| | Transmission Centerline (Revised Alignment) | | |
| Access | | | |
| | Existing Road, Substantial Modification, 71-100% Improvements | | |
| | New Road, Bladed | | |
| | New Road, Primitive | | |
| Work Areas | | | |
| | Pulling and Tensioning | | |
| | Structure Work Area | | |
| Important Siting Constraints and Other Features | | | |
| | 20-ft Contours | | |
| | Stream | | |
| | Public Roads | | |
| | Elk Winter Range | | |

Notes:
Not intended for construction or any uses other than intended purpose.

Project features current as of March 9, 2023.

Data Source(s):
BLM, Esri, NPS, ODOT, USGS, Velocity

Imagery:
Source: Esri, Maxar, Earthstar Geographics, and the GIS User Community

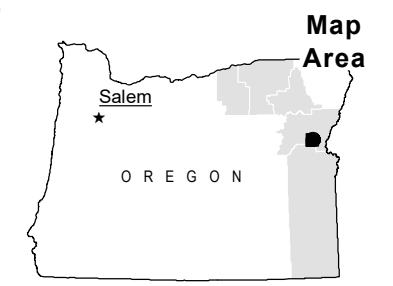
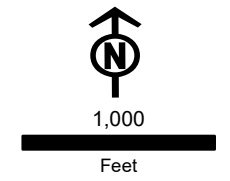
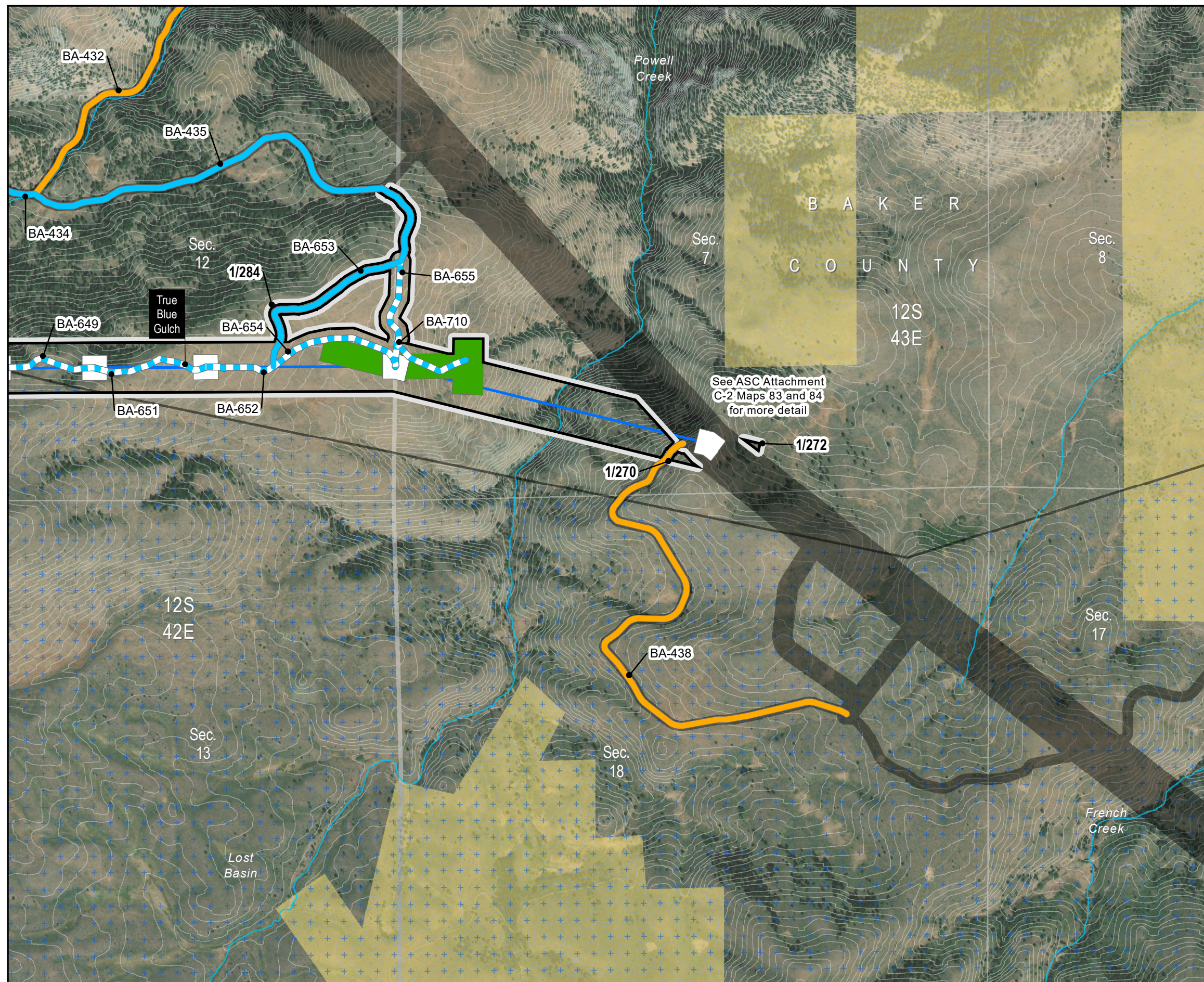


Figure 4-1
RFA1 Site Boundary Changes

True Blue Gulch
Baker County

Map 4



- | | |
|---|---------------------------|
| Project Features | Land Status |
| New RFA1 Site Boundary | Bureau of Land Management |
| Site Boundary Approved in Site Certificate | Private |
| Transmission Centerline (Revised Alignment) | |
| Access | |
| Existing Road, Substantial Modification, 21-70% Improvements | |
| Existing Road, Substantial Modification, 71-100% Improvements | |
| New Road, Bladed | |
| Work Areas | |
| Pulling and Tensioning | |
| Structure Work Area | |
| Important Siting Constraints and Other Features | |
| 20-ft Contours | |
| Stream | |
| Elk Winter Range | |

Notes:
Not intended for construction or any uses other than intended purpose.
Project features current as of March 9, 2023.
Data Source(s):
BLM, Esri, NPS, ODOT, USGS, Velocity
Imagery:
Source: Esri, Maxar, Earthstar Geographics, and the GIS User Community

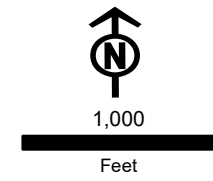
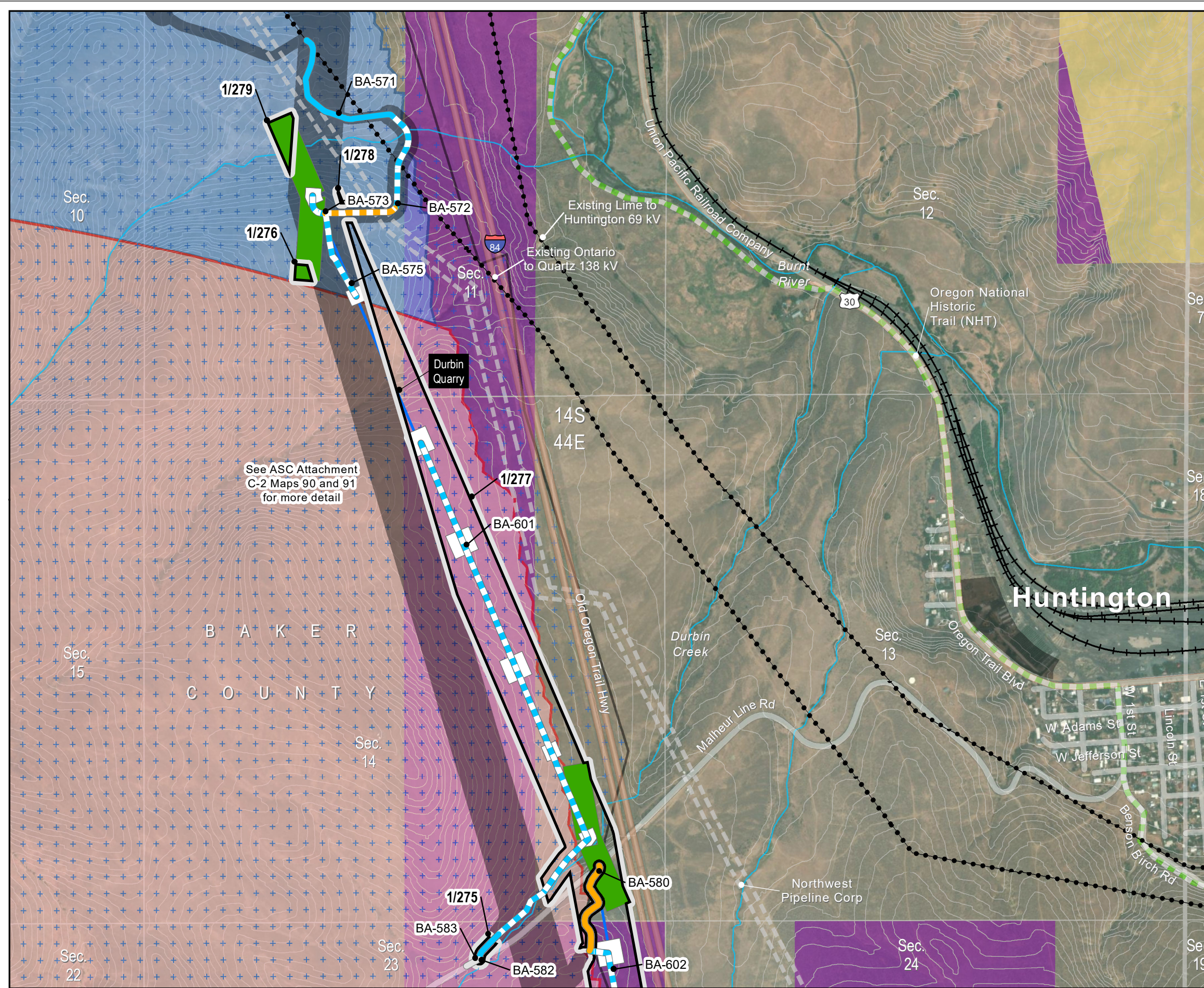


Figure 4-1
RFA1 Site Boundary Changes

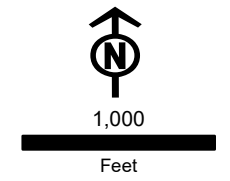
Durbin Quarry
Baker County

Map 5



- Project Features**
- New RFA1 Site Boundary
 - Site Boundary Approved in Site Certificate
 - Transmission Centerline (Revised Alignment)
 - Access
 - Existing Road, No Improvements Required
 - Existing Road, Substantial Modification, 21-70% Improvements
 - Existing Road, Substantial Modification, 71-100% Improvements
 - New Road, Bladed
 - New Road, Primitive
 - Work Areas
 - Pulling and Tensioning
 - Structure Work Area
 - Important Siting Constraints and Other Features
 - 20-ft Contours
 - Existing Transmission Line
- Other Features**
- Pipeline
 - Stream
 - Oregon National Historic Trail (NHT)
 - Interstate
 - Highways
 - Public Roads
 - Railroad
 - Elk Winter Range
 - Sage-grouse Core Areas and Habitat (ODFW)
 - Core Area
 - Low Density
 - Land Status
 - Bureau of Land Management
 - Private
 - Designated Utility Corridor

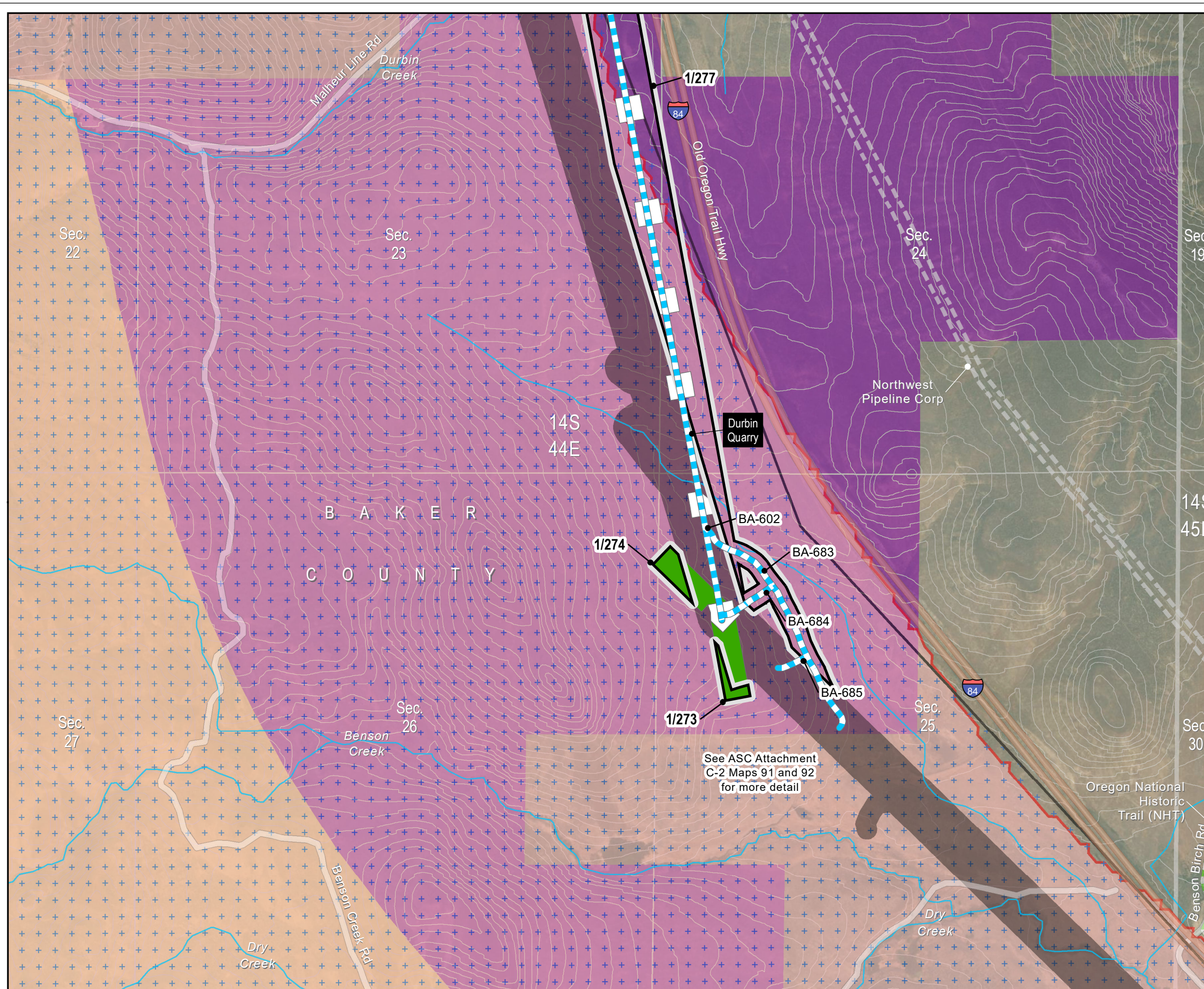
Notes:
Not intended for construction or any uses other than intended purpose.
Project features current as of March 9, 2023.
Data Source(s):
BLM, Esri, NPS, ODOT, USGS, Velocity
Imagery:
Source: Esri, Maxar, Earthstar Geographics, and the GIS User Community



**Figure 4-1
RFA1 Site Boundary Changes**

Durbin Quarry
Baker County

Map 6



- Project Features**
- New RFA1 Site Boundary
 - Site Boundary Approved in Site Certificate
 - Transmission Centerline (Revised Alignment)
 - Access
 - New Road, Bladed
 - Pulling and Tensioning
 - Structure Work Area
 - 20-ft Contours
 - Pipeline
 - Stream
 - Oregon National Historic Trail (NHT)
 - Interstate
 - Public Roads
 - Elk Winter Range
- Sage-grouse Core Areas and Habitat (ODFW)**
- Core Area
- Land Status**
- Bureau of Land Management
 - Private
 - Designated Utility Corridor

Notes:
Not intended for construction or any uses other than intended purpose.
Project features current as of March 9, 2023.

Data Source(s):
BLM, Esri, NPS, ODOT, USGS, Velocity

Imagery:
Source: Esri, Maxar, Earthstar Geographics, and the GIS User Community

1,000 Feet

Map Area

