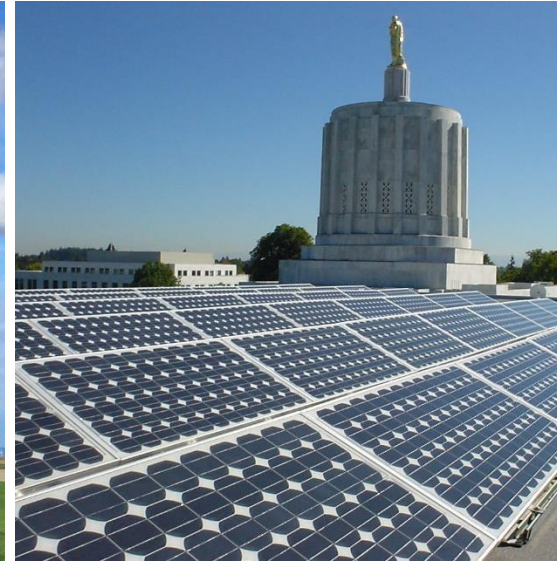


Oregon Department of **ENERGY**

Yellow Rosebush Energy
Center

Notice of Intent
Informational Meeting

November 2, 2023
Imperial River Company
Conference Room
Maupin, OR.



5:00 PM - Meet and Greet and
1:1 conversations with ODOE
and Applicant

6:00 PM - Presentation

AGENDA

- Public Meeting Overview
- Siting Process Overview (ODOE)
- Proposed Facility Overview (Applicant)
- Q&A Session - Comment

Notice of Intent to Apply for a Site Certificate

**Yellow Rosebush Energy Center
September 2023**

**Submitted to
Oregon Energy Facility Siting Council**

**Prepared for
Yellow Rosebush Energy Center, LLC**

Prepared by



Meeting Overview

This informational meeting:

- Is intended to give members of the public an opportunity to learn about the proposal and provide comment on the NOI.
- Is **not** a contested case hearing, and participation in the meeting is not required to preserve issues or standing for the contested case.

Please hold all questions and comments until the Q&A session at end of the presentations.

Any person engaging disruptive behavior may be asked or required to leave the meeting.

Oregon's Energy Facility Siting Program

Oversees the review, decision-making, and compliance for most large-scale energy-generating facilities and infrastructure in Oregon.

- Energy Facility Siting Council (EFSC) is final decision-making authority.
- Oregon Department of Energy (ODOE), Siting Division serves as staff to EFSC.

Consolidated process between state agencies and local government:

- Eliminates duplication, consolidates timelines, decisions, and judicial review
- Reviews proposal for compliance with applicable standards, laws, and rules.
- Provides opportunities for public participation and comment.
- Coordinates review and solicits input from reviewing agencies, local governments, and tribal governments.

State Jurisdictional “Energy Facilities” ORS 469.300(11)(a)(D)

A solar photovoltaic power generation facility using more than:

- (i) 160 acres located on high-value farmland as defined in ORS 195.300;
- (ii) 1,280 acres located on land that is predominantly cultivated or that, if not cultivated, is predominantly composed of soils that are in capability classes I to IV, as specified by the National Cooperative Soil Survey operated by the National Resources Conservation Service of the United States Department of Agriculture; or
- (iii) 1,920 acres located on any other land.

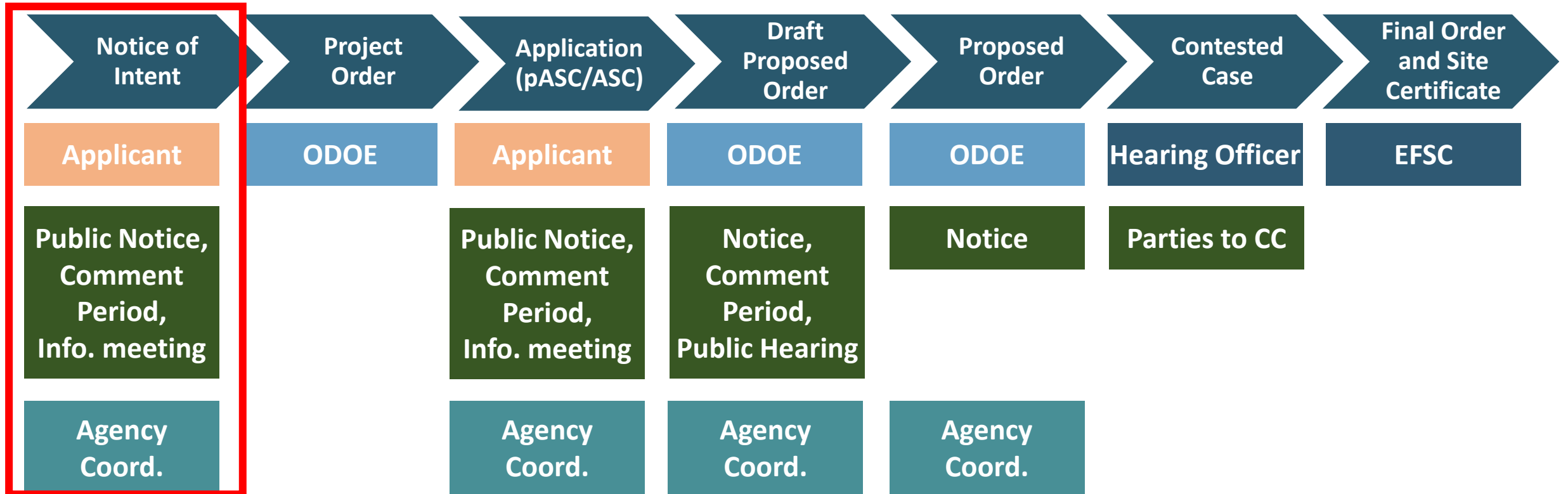


Proposed Facility

- The proposed facility qualifies as an “energy facility” under ORS 469.300(11)(a)(D), and the applicant must obtain a Site Certificate from the Oregon Energy Facility Siting Council (EFSC or Council) before it may construct or operate of the proposed facility.
- To obtain a site certificate the applicant must demonstrate that the proposed facility meets the standards established by the Council in OAR chapter 345, other applicable Oregon statutes, rules and standards, and Oregon’s land use planning goals.
- ODOE serves as staff to the Council and conducts much of the application review process. Submitting the NOI is the first step in the process of obtaining a site certificate.

ENERGY FACILITY SITING PROCESS

Application for Site Certificate Process



WE ARE HERE

Reviewing Agency Coordination

Reviewing Agencies and Special Advisory Groups:

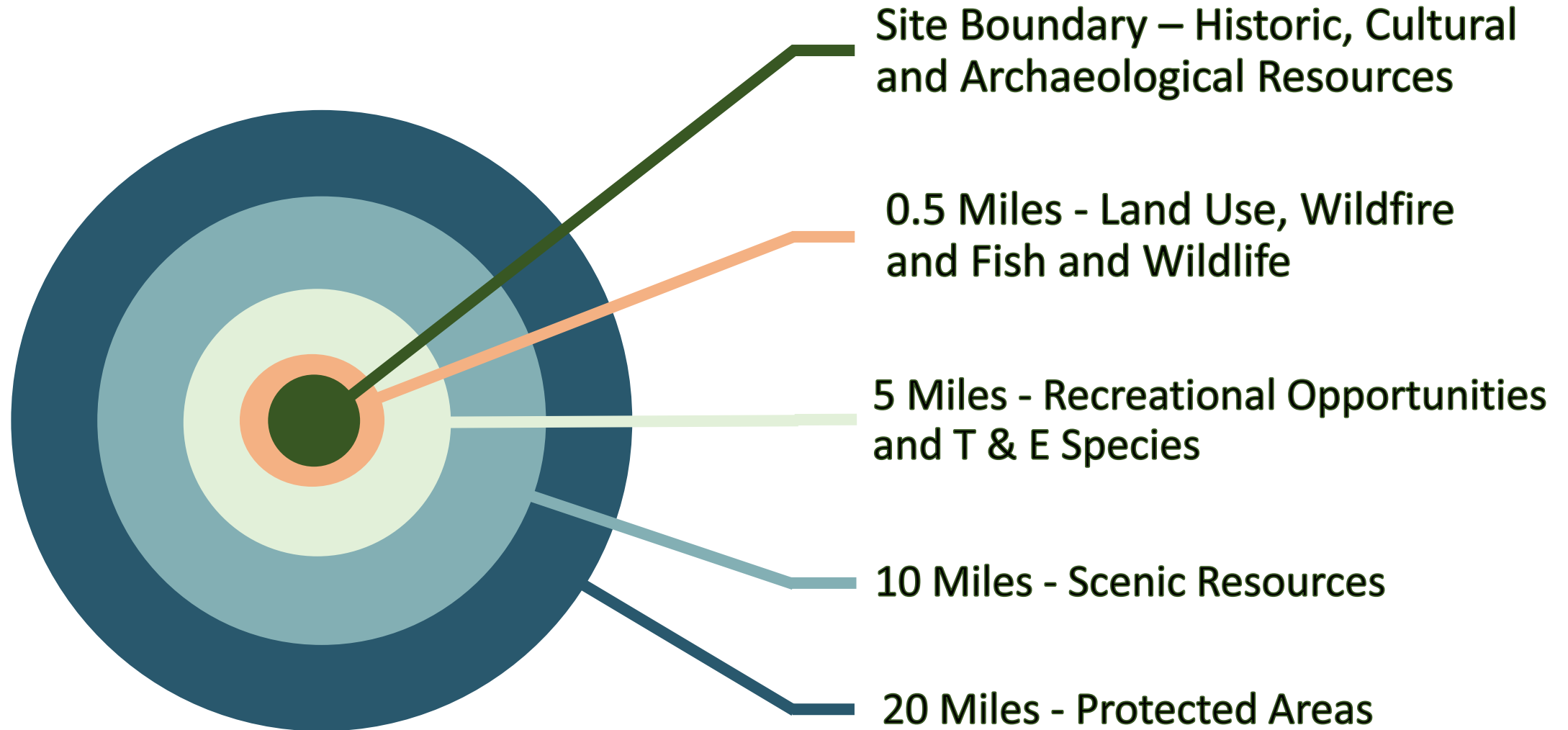
- Provide comments on the proposed facility within the jurisdiction or expertise of the agency
- Make recommendations regarding the size and location of analysis area(s)
- Identify:
 - Studies that should be conducted to identify potential impacts
 - Statutes, administrative rules, applicable substantive criteria, and local government ordinances administered by the agency
 - Permits administered by the agency that might apply to construction or operation of the proposed facility

Energy Facility Siting Process

EFSC Siting Standards:

- General Standard of Review
- Organizational Expertise
- Structural Standard
- Soil Protection
- Land Use
- Protected Areas
- Retirement and Financial Assurance
- Fish and Wildlife Habitat
- Threatened and Endangered Species
- Scenic Resources
- Historic, Cultural and Archaeological Resources
- Recreation
- Public Services
- Waste Minimization
- Wildfire Prevention and Risk Mitigation
- Noise
- Siting Standards for Transmission Lines
- Need Standard

NOI Study Area Distances

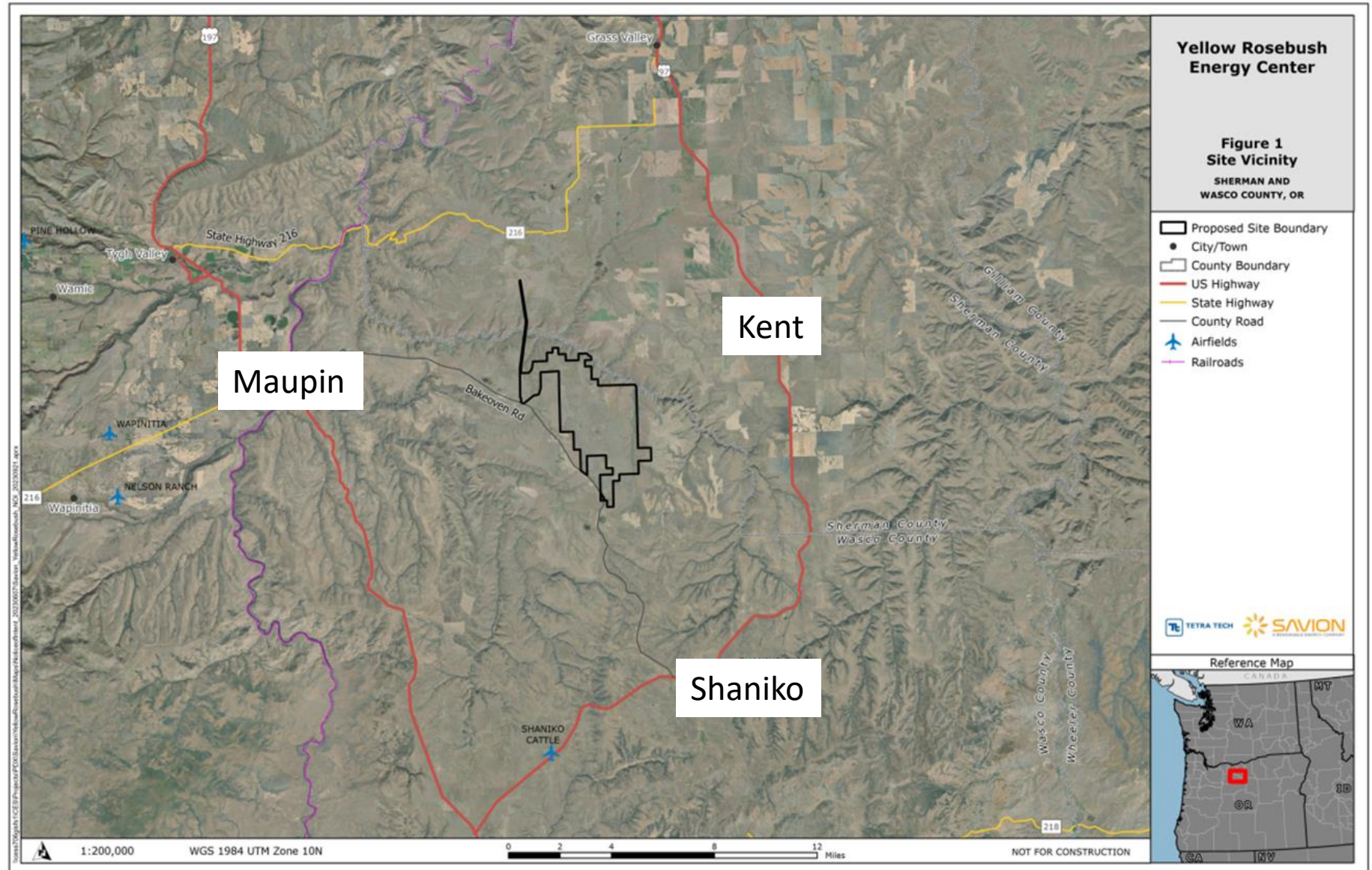


Land Use

- The applicant may choose to obtain land use approval from EFSC or from the affected local governments.
- NOI indicates applicant intends to seek land use determination from EFSC
- If election changes, interested persons should participate in the local land use process.

Proposed Facility Location

Approximately 8,075 acres (12.6 sq. mile) of private land in Wasco and Sherman counties, approximately 8 miles east of Maupin.



Proposed Facility

The facility is a proposed 800 MW solar photovoltaic energy generation facility and related or supporting facilities include up to 800 MWs of battery energy storage; a collector substation; a 34.5 kilovolt (kV) collection system; an Operation and Maintenance building; an overhead 500-kV gen-tie line; perimeter fencing, access roads, and staging areas, and point of interconnection (POI).

The applicant is considering two options for the POI to the regional electrical grid:

1. The Bonneville Power Administration (BPA)-owned switchyard, adjacent to the site boundary and the existing BPA's John Day to Grizzly 500-kV gen-tie transmission line; or
2. An alternate POI to BPA's existing Buckley Substation, requiring 4.5 miles of a new 500 kV gen-tie line adjacent to existing BPA transmission line, in Sherman County to the north of the site boundary.

Public Comment Period

- Opportunity for the public to comment on the Notice of Intent is Open. All written comments submitted to ODOE are included in the public record and provided to the applicant.
- Comment period closes on December 1, 2023.
- Oral Comments may be provided during the Q&A Session at this meeting.
- This meeting is not a public hearing, and participation is not required to establish standing to participate in the contested case during the review of the Application for Site Certificate.
- Comments during tonight's public informational meeting will occur after the applicant's presentation

ODOE Contact

Kathleen Sloan, Senior Siting Analyst
Oregon Department of Energy
550 Capitol St. NE
Salem, OR 97301
(971) 701-4913

kathleen.sloan@energy.oregon.gov

Helpful Resources

Home > **Siting Public Comment**

Siting Public Comment

*** Required Field**


Project Selection

Project *
Please select the project that you are interested in commenting on

Next


Oregon Department of Energy / Energy Facilities & Safety / Facilities

Energy Facility Siting




COUNCIL INFORMATION

- About the Council
- Council Jurisdiction
- Council Meetings
- Council Rulemaking
- Compliance Program



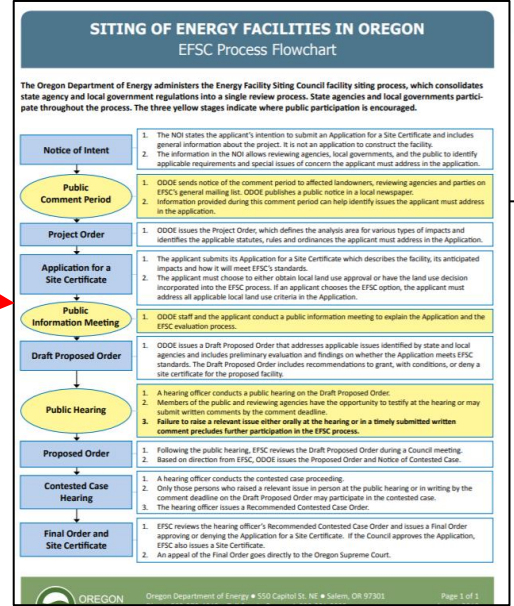
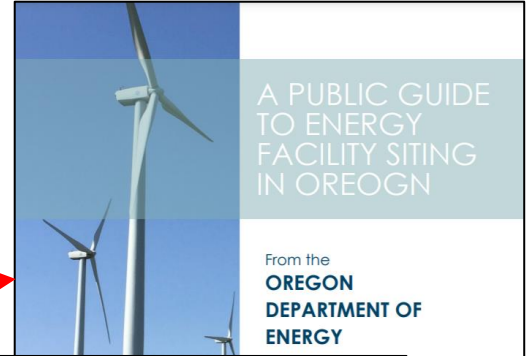
ENERGY FACILITIES

- Public Guide
- Siting Project Updates
- Facilities Under EFSC
- Public Comment Portal
- EFSC Facilities Map
- Federal Facilities in Oregon
- About the Siting Process
- Siting Standards
- Siting Statutes & Rules
- Fact Sheets



FACILITIES UNDER REVIEW

- Archway Solar Energy Facility
- Cascade Renewable Transmission System
- Boardman to Hemingway Transmission Line
- Echo Solar Project
- Eugene to Medford Transmission Line
- Nolin Hills Wind Power Project
- Wagon Trail Solar Project



Oregon Department of Energy / Energy Facilities & Safety / Facilities / Yellow Rosebush Energy Center

Yellow Rosebush Energy Center

Site Description: Yellow Rosebush Energy Center is a proposed solar photovoltaic energy generation facility with a generating capacity of approximately 600 megawatts (MW). The facility would be located within a site boundary of approximately 8,075 acres (12.8 sq. miles) of private land zoned for Exclusive Farm Use (EFU) in Wasco and Sherman counties in addition to the proposed solar photovoltaic arrays, the facility is proposed to include an up to 180 MW battery energy storage system, a collector substation, power collection system, Operation and Maintenance building, approximately 4.5 mile overhead 500 kilovolt (kV) grid-interconnection transmission line, point of interconnection (POI), perimeter fencing, access roads, and staging areas.

Status: Under Review: On September 1, 2023, the Oregon Department of Energy received a Notice of Intent to File an Application for a Site Certificate (NOI) for the Yellow Rosebush Energy Center. The Department reviewed the NOI and requested additional information. A revised NOI was submitted by the applicant on September 28, 2023. A Public Notice of the Notice of Intent, a public comment period, and an informational meeting was issued October 10, 2023. Details on the public informational meeting are available in the Public Notice in the Timeline below.

ODOE is accepting public comments on the NOI from October 10, 2023 through December 1, 2023. Information on how to submit comments is included in the Public Notice.

<https://www.oregon.gov/energy/facilities-safety/Pages/default.aspx>

<https://www.oregon.gov/energy/facilities-safety/facilities/Pages/YRB.aspx>

<https://odoe.powerappsportals.us/en-US/SitingPublicComment/>



YELLOW ROSEBUSH
ENERGY CENTER

November
2023

ODOE Public Meeting

Presented by Jeff Watson, Savion Energy



About Savion

YELLOW ROSEBUSH
ENERGY CENTER

Savion, a Shell Group portfolio company operating on a stand-alone basis, is an industry-leading solar and energy storage organization built on a foundation of specialized experience and mastery in the craft of development.

With a growing portfolio of more than 36.5 GW, Savion is currently one of the country's largest and most technologically advanced utility-scale solar and energy storage project development companies.

Savion's diverse team provides comprehensive services at each phase of renewable energy project development, from conception through construction. Savion is committed to helping decarbonize the energy grid by replacing electric power generation with renewable sources and delivering cost-competitive electricity to the marketplace.



Projects Portfolio

Solar and Energy Storage in
Operation/Under
Construction/Contracted

2,658 MW
33 Projects
13 States

Solar in Development

19,651 MW
89 Projects
27 States

Energy Storage in Development

14,544 MW
80 Projects
27 States

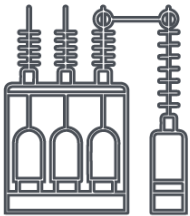
Project Overview

Solar Resource



- Up to 800MW Solar PV developed and constructed in phases
- May include up to 800MW battery energy storage

Interconnection

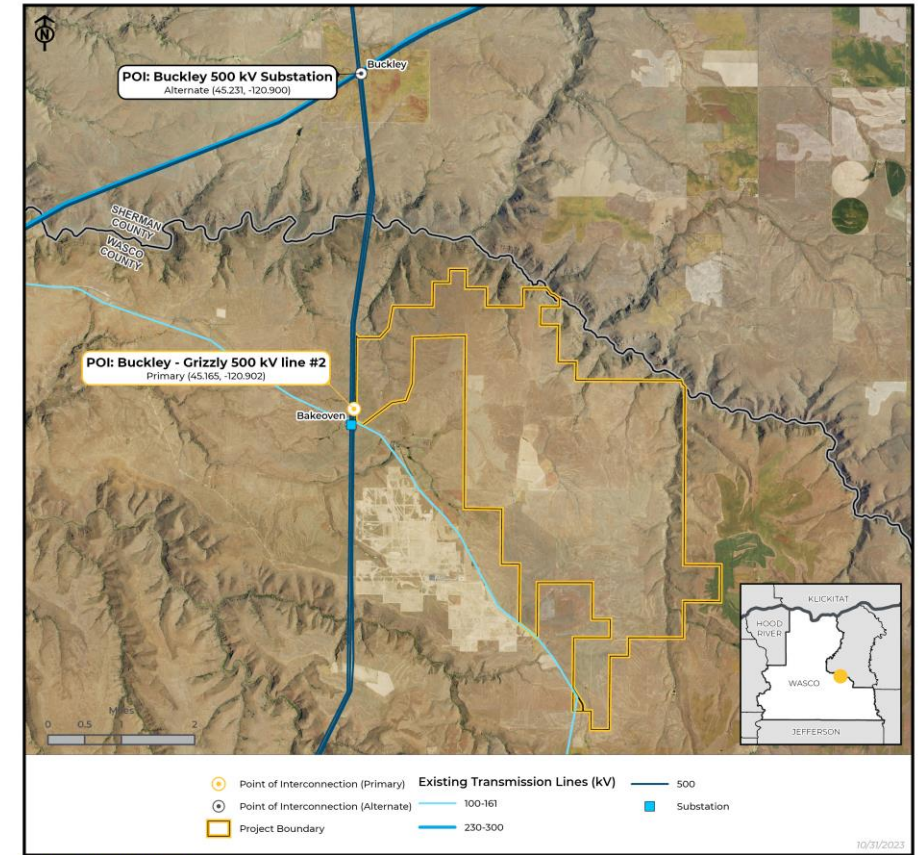


- RTO: BPA
- Primary POI: Buckley to Grizzly 500kV line #2 in Wasco County, OR
- Secondary POI: Buckley Substation in Sherman County, OR

Permitting and Site Control



- Site Control for full capacity of project up to primary POI secured
- Field Surveys and Studies completed 2023



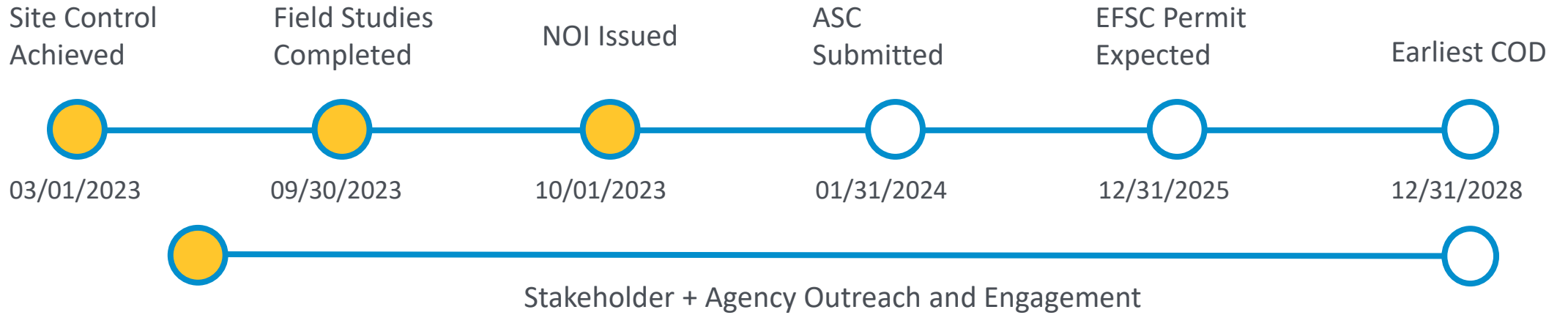
YELLOW ROSEBUSH
The following companies and organizations provided data that contributed to the production of this map: CoreLogic, Inc., Environmental Systems Research Institute (ESRI), OpenStreetMap contributors, BeGrid, Loveland Technologies, U.S. Department of Agriculture (USDA), U.S. Federal Aviation Administration (FAA), U.S. Geological Survey (USGS), WhiteStar Corporation, Ventyx, Inc., An ABB Company, Imagery © 2023 Hexagon and data partners.

800 MW

Wasco County, OR

Earliest COD: December 31, 2028

Project Milestones and Statistics



182k

Estimated homes powered



8,075

Project area acres



40

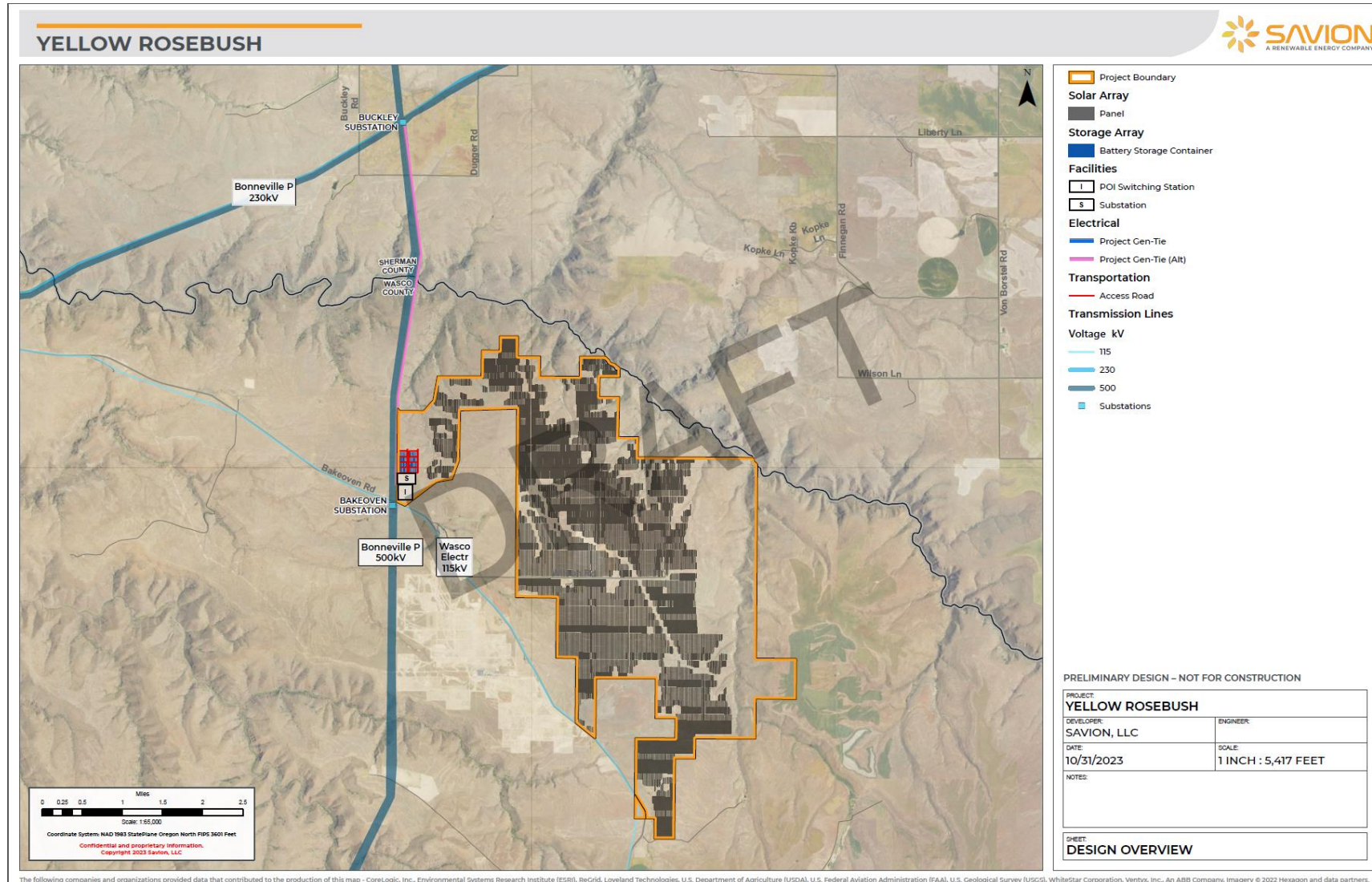
Estimated years of operation



\$1B+

Capital investment by developer

Facility Site Overview



Contact

Jeff Watson

Development Manager
Savion, LLC
jwatson@savionenergy.com

Mitch Taylor

Director of Development and M&A
Savion, LLC
mtaylor@savionenergy.com

Anneke Solsby

Director – Permitting and Environmental
Savion, LLC
asolsby@savionenergy.com

Gary Parker

VP of EPC
Savion, LLC
gparker@savionenergy.com

YELLOW ROSEBUSH
ENERGY CENTER

QUESTIONS?

THANK YOU



Q&A Session/Comments

We will call on you

In Person: Please complete a comment card with your name and contact information and hand it to Erica.

Webinar Participants: The bottom right of the main window is a set of icons.

Click on “Participants”

Click on the hand icon in bottom right of the participant window

Clicking on it again will lower your hand.

Phone Participants: We will call on you

Press *3 on your telephone keypad to raise your hand.

Press *3 again on your telephone keypad to lower your hand.

