



THE HANFORD SITE

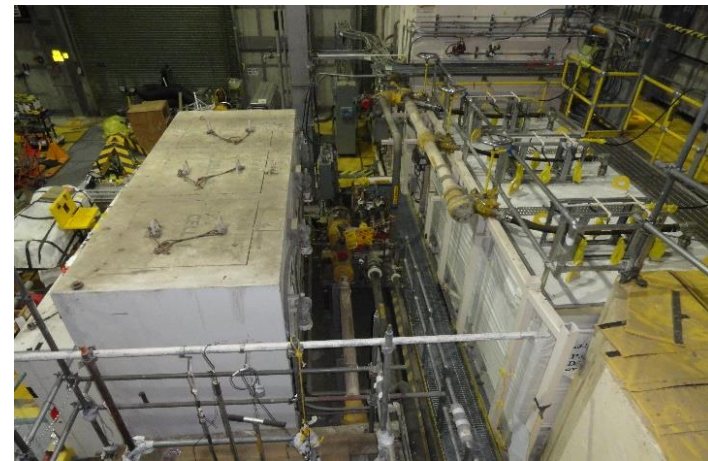
Oregon Hanford Cleanup Board

**Bill Hamel, Assistant Manager for River and Plateau,
Richland Operations Office**

March 11, 2019

Sludge Removal Project

Nine containers transported to T Plant from K West Reactor Basin





Disposing of debris at Environmental Restoration Disposal Facility



Mentoring new workers



October 2018



December 2018

Making progress on removing demolition debris





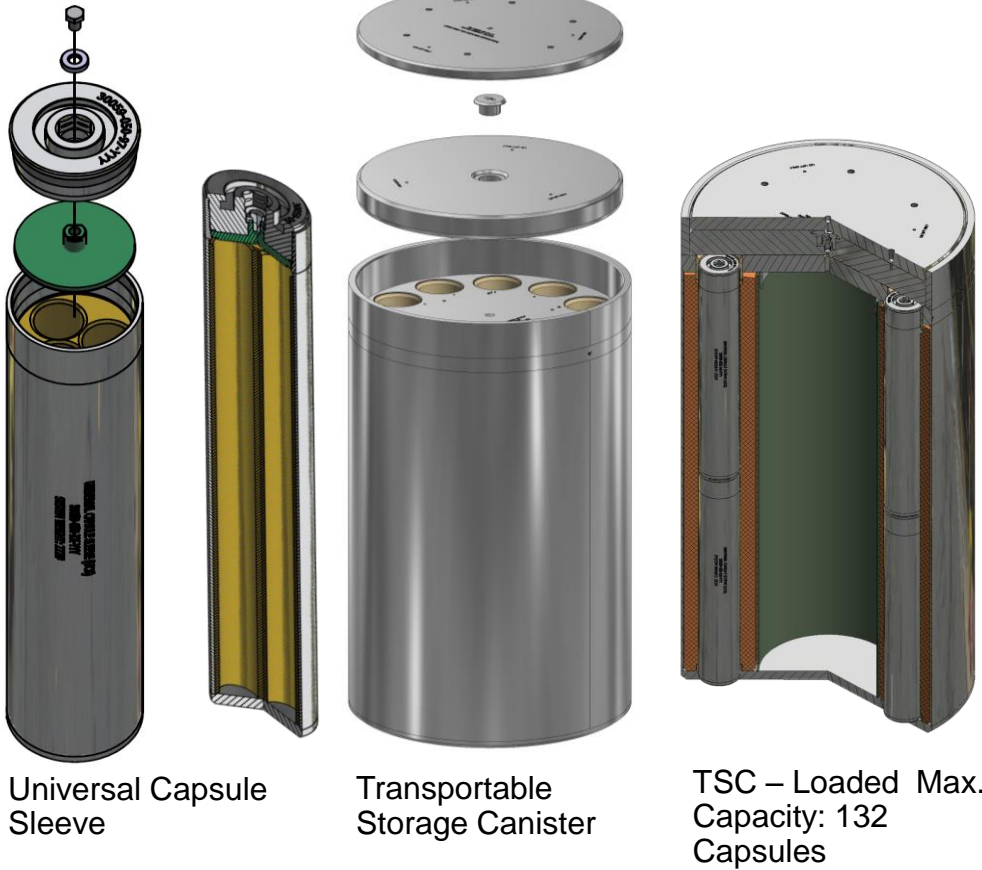
Following testing and training in a mock-up, crews install first remote excavator



Grout and debris added at mock-up to simulate B-Cell flooring



Radiological cleanout of airlock trench



Project includes:

- Cask Storage System
- Capsule Storage Area
- Upgrades to Waste Encapsulation and Storage Facility

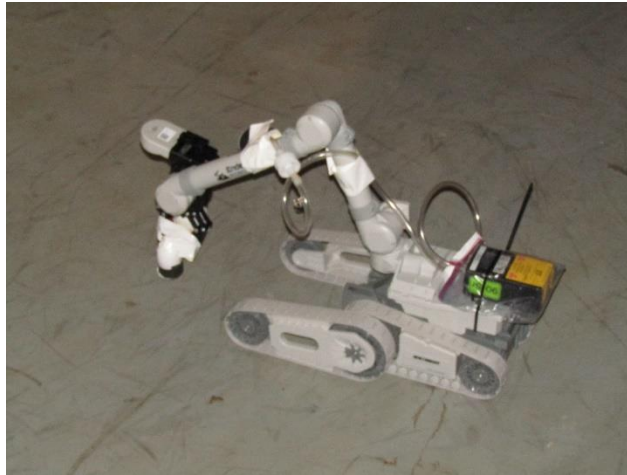


Artist's rendition of Capsule Storage Area

THE HANFORD SITE | PUREX Tunnel 2 Stabilization

Grouting of 1,688-foot-long tunnel is 80 percent complete;
weekly updates posted on www.hanford.gov





Robot with sampling equipment used to check radiological conditions



Workers removing asbestos-clad steam lines

Reconfiguring, right-sizing, and rejuvenating site infrastructure;
making upgrades needed for Direct Feed Low Activity Waste operations

- Water/Sewer
- Roads
- Electrical
- IT Systems



Appropriations by Control Point

(\$ in Thousands)

PBS	PBS Title	FY 2018 Omnibus	FY 2019 Minibus
RL-0011	Nuclear Material Stabilization and Disposition - PFP	26,067	46,200
RL-0012	Spent Nuclear Fuel Stabilization and Disposition	42,610	13,900
RL-0013C	Solid Waste Stabilization and Disposition - 200 Area	145,006	159,900
RL-0030	Soil and Water Remediation - Groundwater/Vadose Zone	132,363	132,158
RL-0201	Hanford Site Wide Services*	316,833	308,200
Central Plateau Remediation		662,879	660,358
RL-0040	Nuclear Facility D&D - Remainder of Hanford**	68,042	89,792
RL-0041	Nuclear Facility D&D - River Corridor Closure Project***	115,650	103,900
River Corridor and Other Cleanup Operations		183,692	193,692
RL-0013C	18-D-404 WESF Modifications and Capsule Storage	6,500	1,000
RL-0020	Safeguards and Security	81,990	86,686
RL-0042	Nuclear Facility D&D - Fast Flux Test Facility Project	2,240	2,240
RL-0100	Richland Community and Regulatory Support	10,121	10,121
Total	Richland Field Office Funding Summary	947,422	954,097

D&D = Deactivation and Decommissioning, WESF = Waste Encapsulation Storage Facility

* These costs were distributed among several PBSs before FY 2017

** HAMMER (RL-0040) costs transferred to RL-0201 in FY 2019

*** B Reactor (RL-0041) costs transferred to RL-0201 in FY 2018

Current Contracts

Occupational Medical Services (OccMed)

- Firm Fixed Price, Cost Reimbursement, Indefinite Delivery/Indefinite Quantity (IDIQ)
- **Awarded:** 12/31/2018 to HPMC

Mission Support Contract (MSC) *Additional Opportunities for Small Business*

- Infrastructure

Expires: 5/25/2019

Plateau Remediation Contract (PRC) *Similar Scope*

- Cleanup, groundwater

Expires: 9/30/2019

222-S Analytical Laboratory Services *Includes New Scope*

- Analysis, and Storing of Samples (mainly tank farms)

Expires: 9/20/2020

Tank Operations Contract (TOC) *Similar Scope*

- Store waste, close tank areas

Expires: 9/30/2019

Future (FY 2019-2029)

Hanford Mission Essential Services Contract (HMESC)

- Cost Plus Award Fee, Cost Reimbursement, IDIQ
- **Status:** In Evaluation

Central Plateau Cleanup Contract (CPCC)

- IDIQ
- **Status:** RFP issued

222-S Laboratory (222-S Lab)

- Cost Plus Award Fee, Cost Reimbursement
- **Status:** RFP issued

Tank Closure Contract (TCC)

- IDIQ
- **Status:** RFP issued