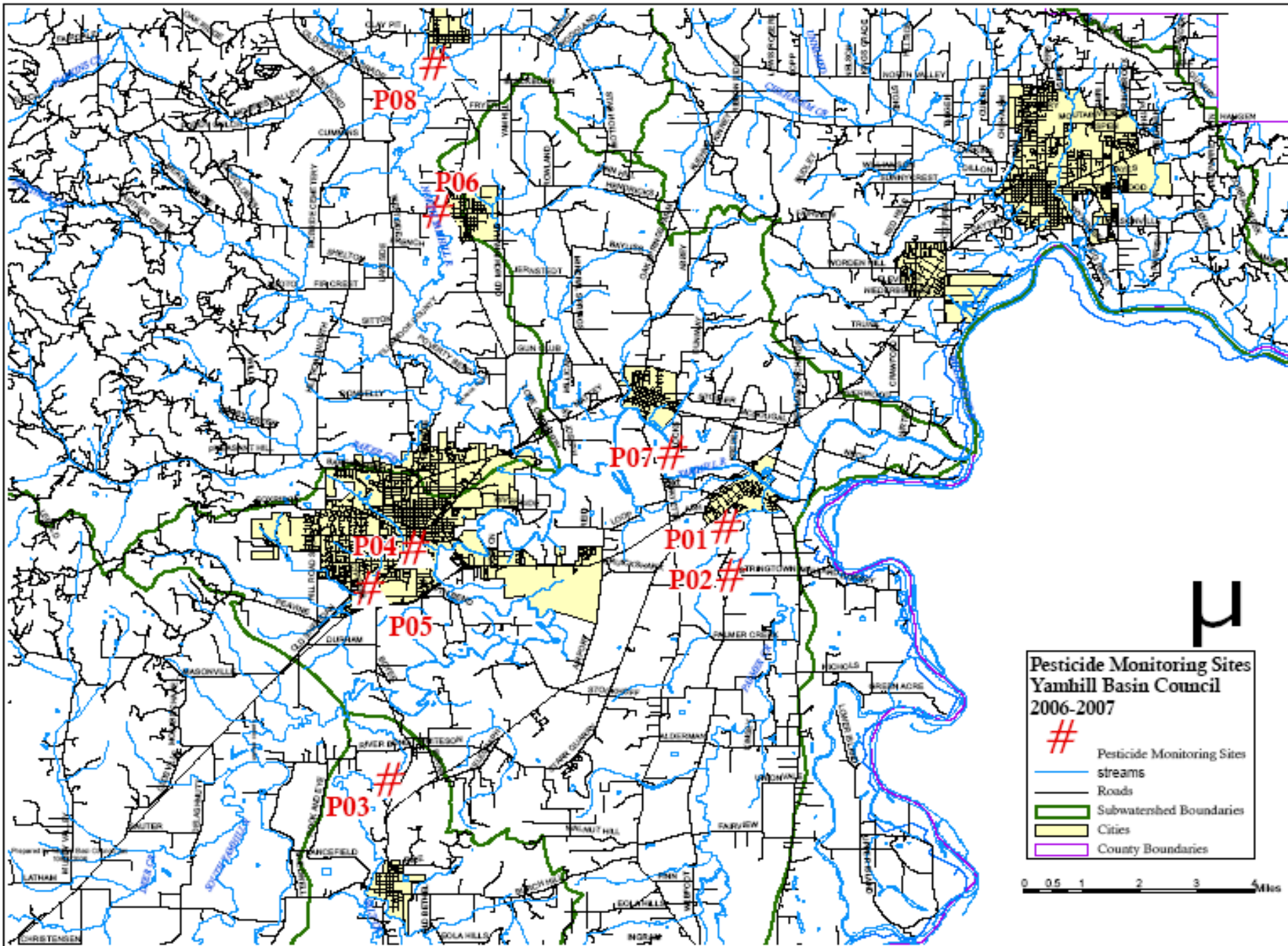


Discussion Slides for Greater Yamhill PSP



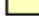

SAG Meeting
ODA HQ Office
January 16th 2020

Yamhill PSP History

- ▶ Decision made in 2006 to initiate a PSP in the Yamhill
 - ▶ WF Palmer Creek on DEQ “303(d)” list of impaired waters for chlorpyrifos based on USGS monitoring
 - ▶ Watershed council and SWCD expressed strong interest
 - ▶ Diverse agriculture and some small urban centers
- ▶ Monitoring began in 2007 throughout the sub-basin
 - ▶ As many as 8 locations monitored in early years
- ▶ Regular outreach and communications activities
 - ▶ OSU Integrated Plant Protection Center and Extension workshops on IPM and pesticide risk reduction
 - ▶ Watershed council membership meetings and WF Palmer events in Dayton
 - ▶ Pesticide dealers/crop consulted and included in meetings



**Pesticide Monitoring Sites
Yamhill Basin Council
2006-2007**

- #** Pesticide Monitoring Sites
-  streams
-  Roads
-  Subwatershed Boundaries
-  Cities
-  County Boundaries

0 0.5 1 2 3 4 Miles

Yamhill PSP - Current Approach and Status

Currently there are two areas of focus within the Greater Yamhill Pesticide Stewardship Partnership

- ❖ Palmer Creek Sub-Watershed
- ❖ Cozine Creek Sub-Watershed

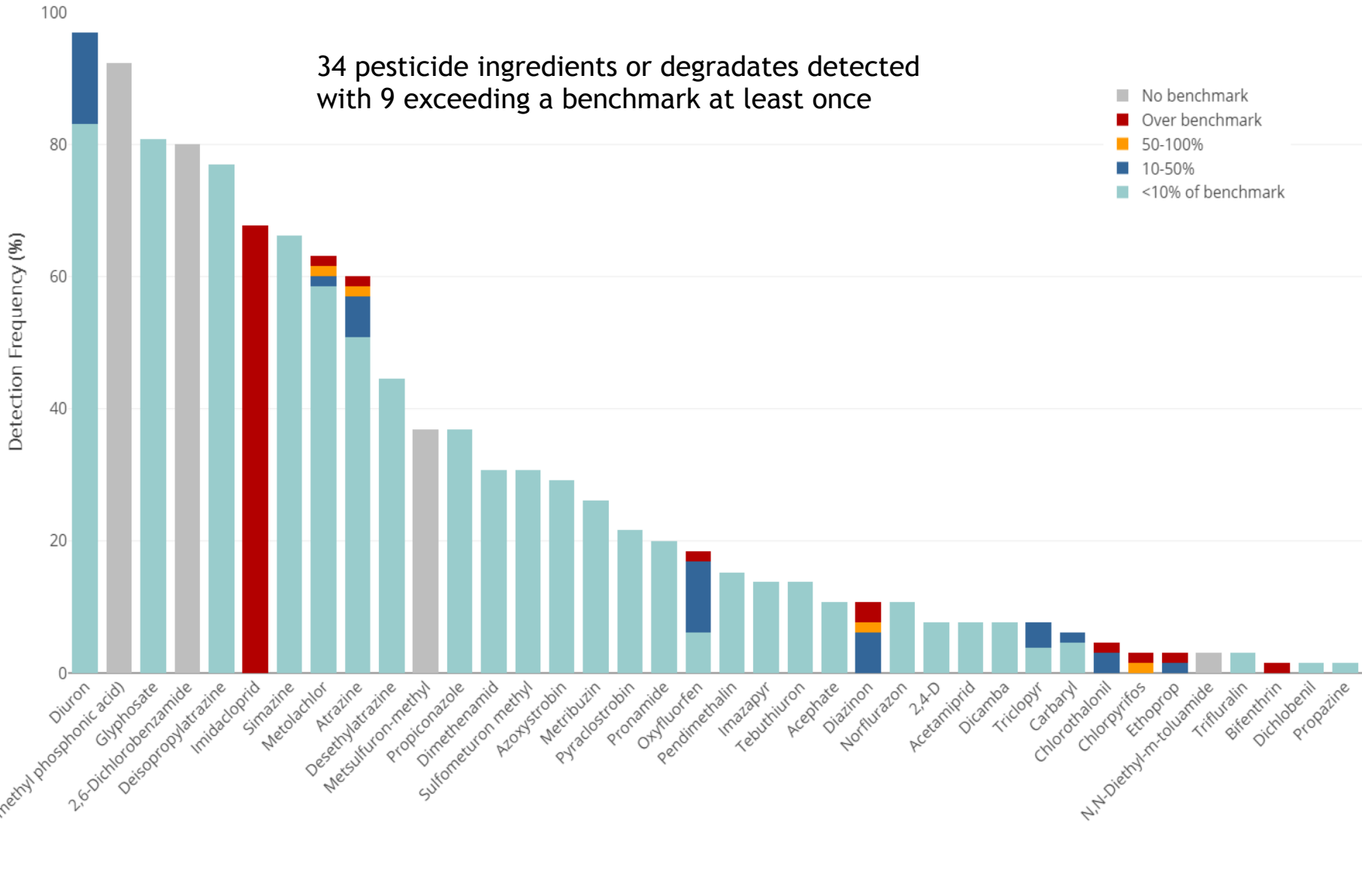
The shift to these sub-watersheds began in to focus attention on smaller more intensively utilized areas which had demonstrated the greatest consistent impact from pesticides

A review of several years of historical data has indicated only minimal to no sustained reductions in pesticide concentrations in These sub-watersheds

Pesticide loading analysis has revealed additional data that may help in further explaining why improvement has been lacking

Yamhill 2018 Detection Frequency

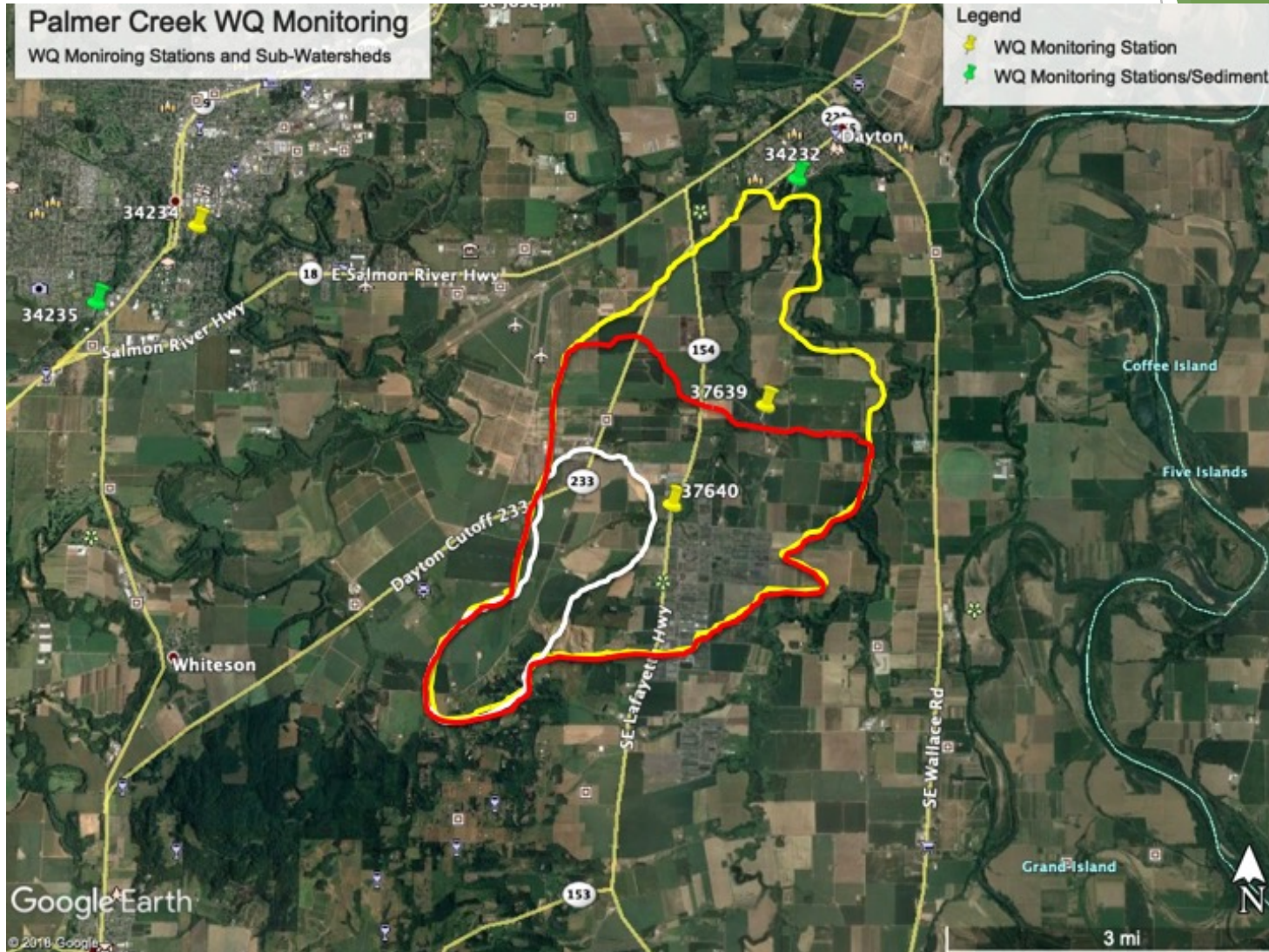
34 pesticide ingredients or degradates detected with 9 exceeding a benchmark at least once



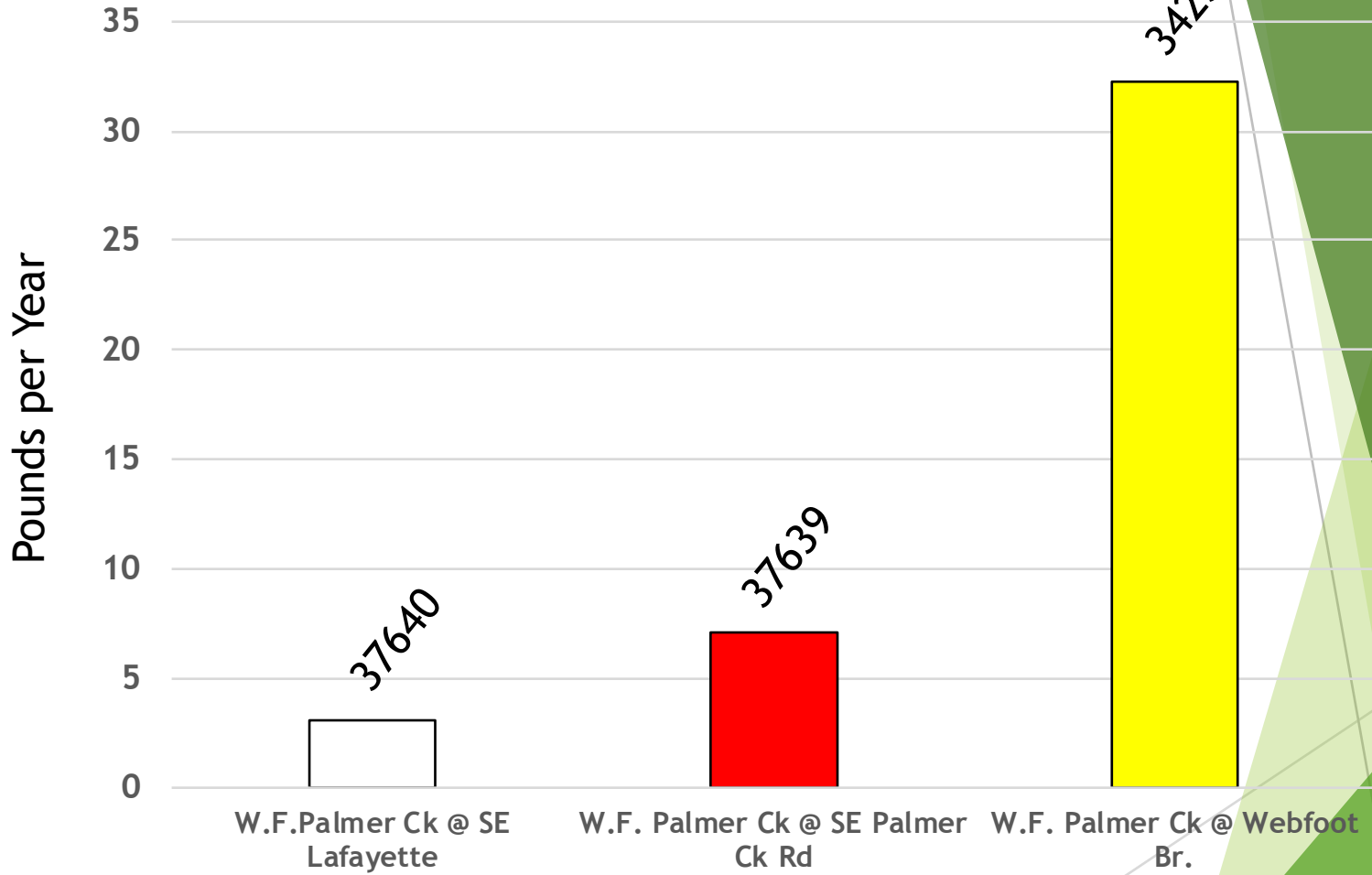
Yamhill PSP Monitoring Plans

- ▶ Beginning in 2020 monitoring will be scaled back by approximately 50% in the Yamhill
 - ▶ WF Palmer Creek:
 - ▶ Webfoot Bridge (furthest downstream) = 1x per month
 - ▶ SE Palmer Creek Rd and SE Lafayette Hwy = 3x in spring
 - ▶ Cozine Creek:
 - ▶ Middle Cozine = 1x per month
 - ▶ Lower Cozine = 1x per month
- ▶ Steam discharge measurements will increase on Cozine Creek to better characterize hydrology and further loading analysis

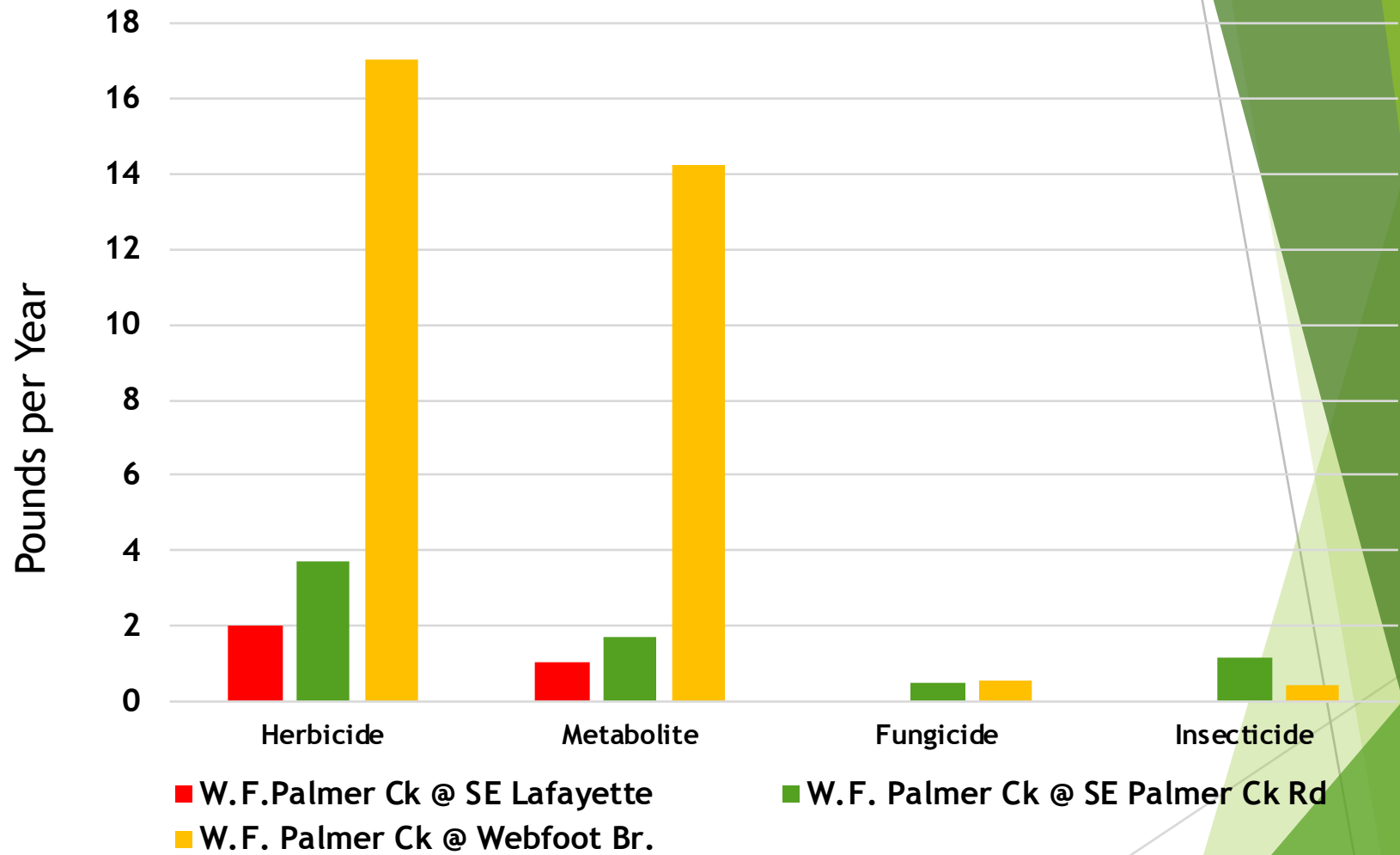
PSP Areas of Interest Greater Yamhill



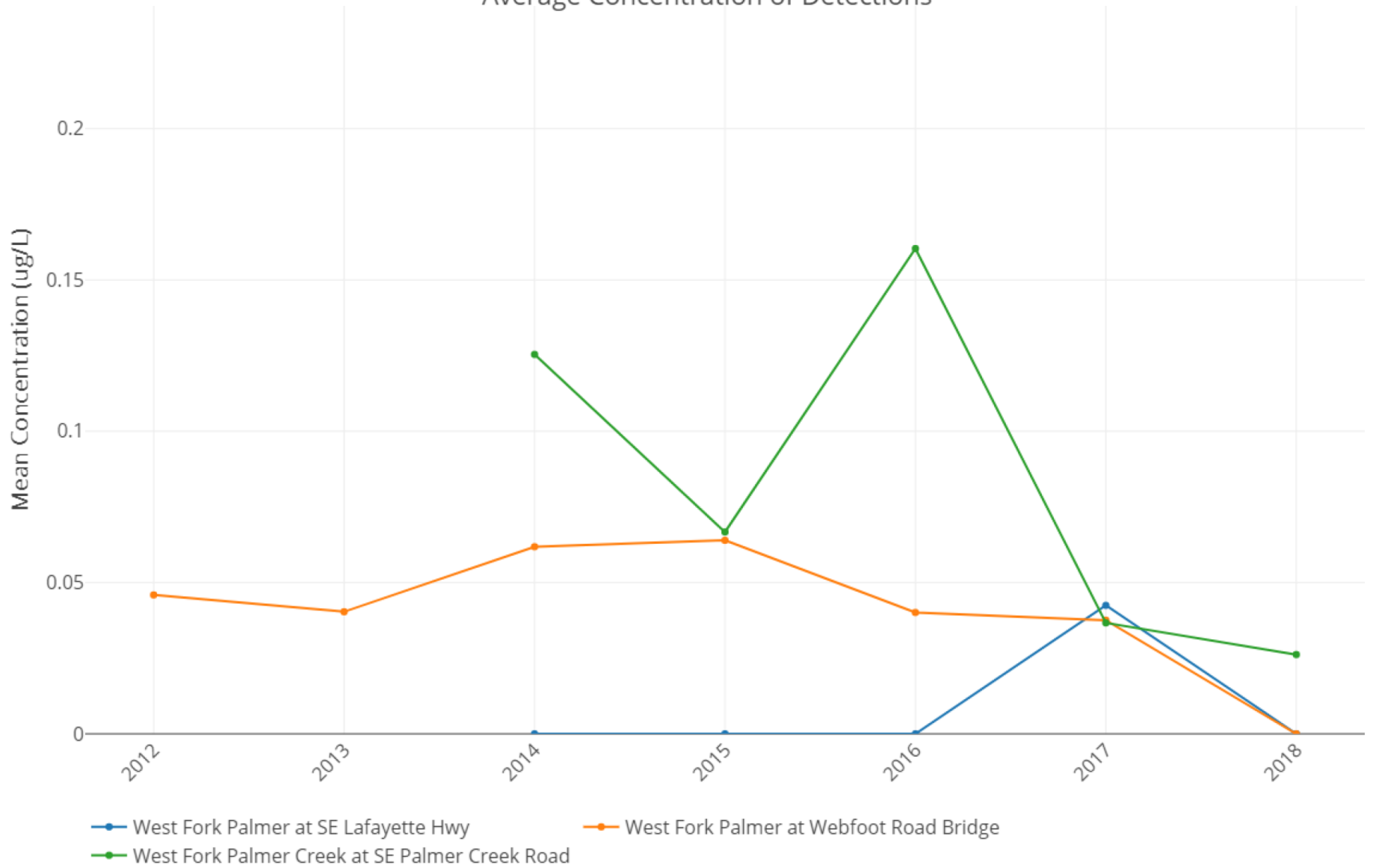
Estimated Total Pesticide Loading (2018)



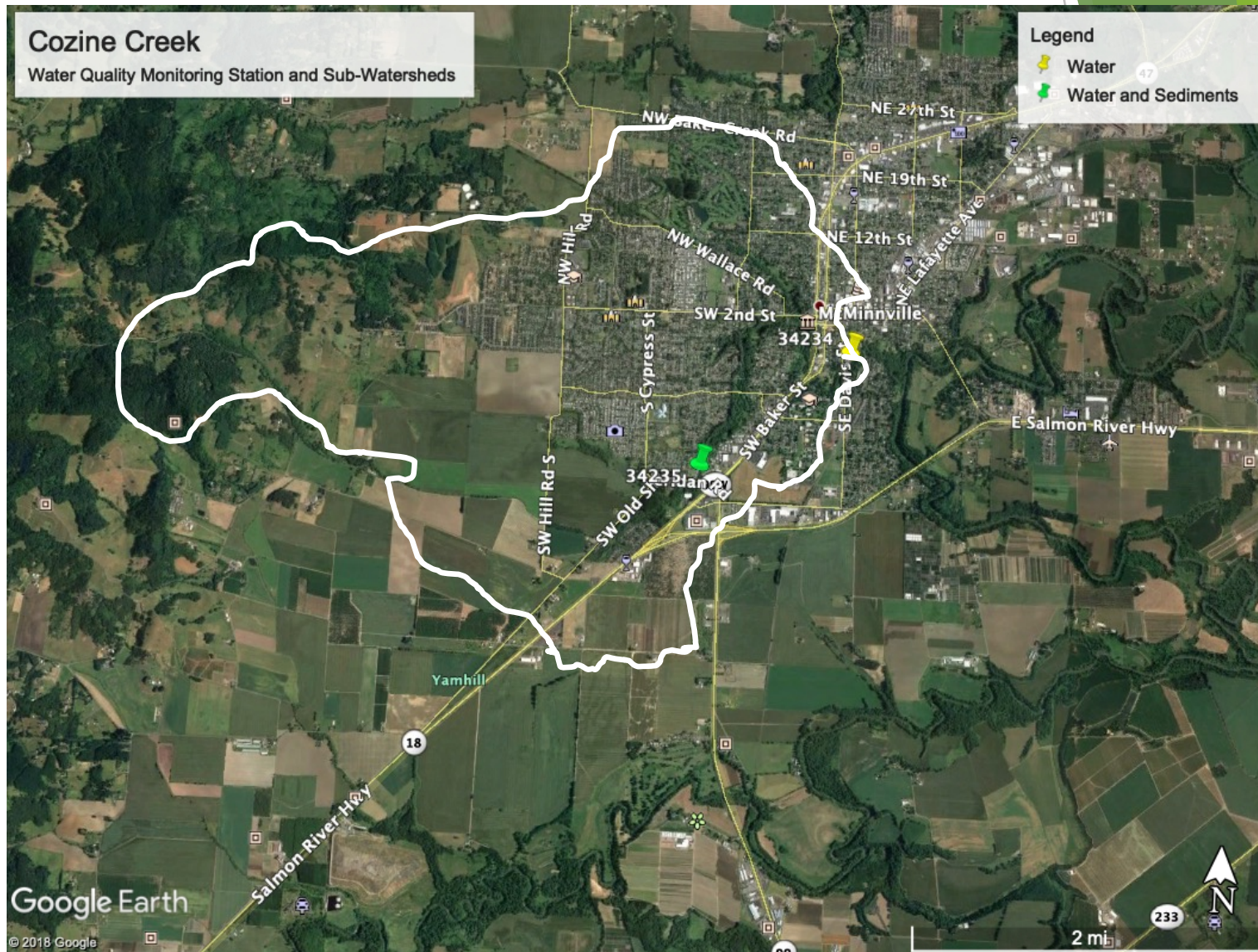
Estimated Total Pesticide Loading by Type (2018)



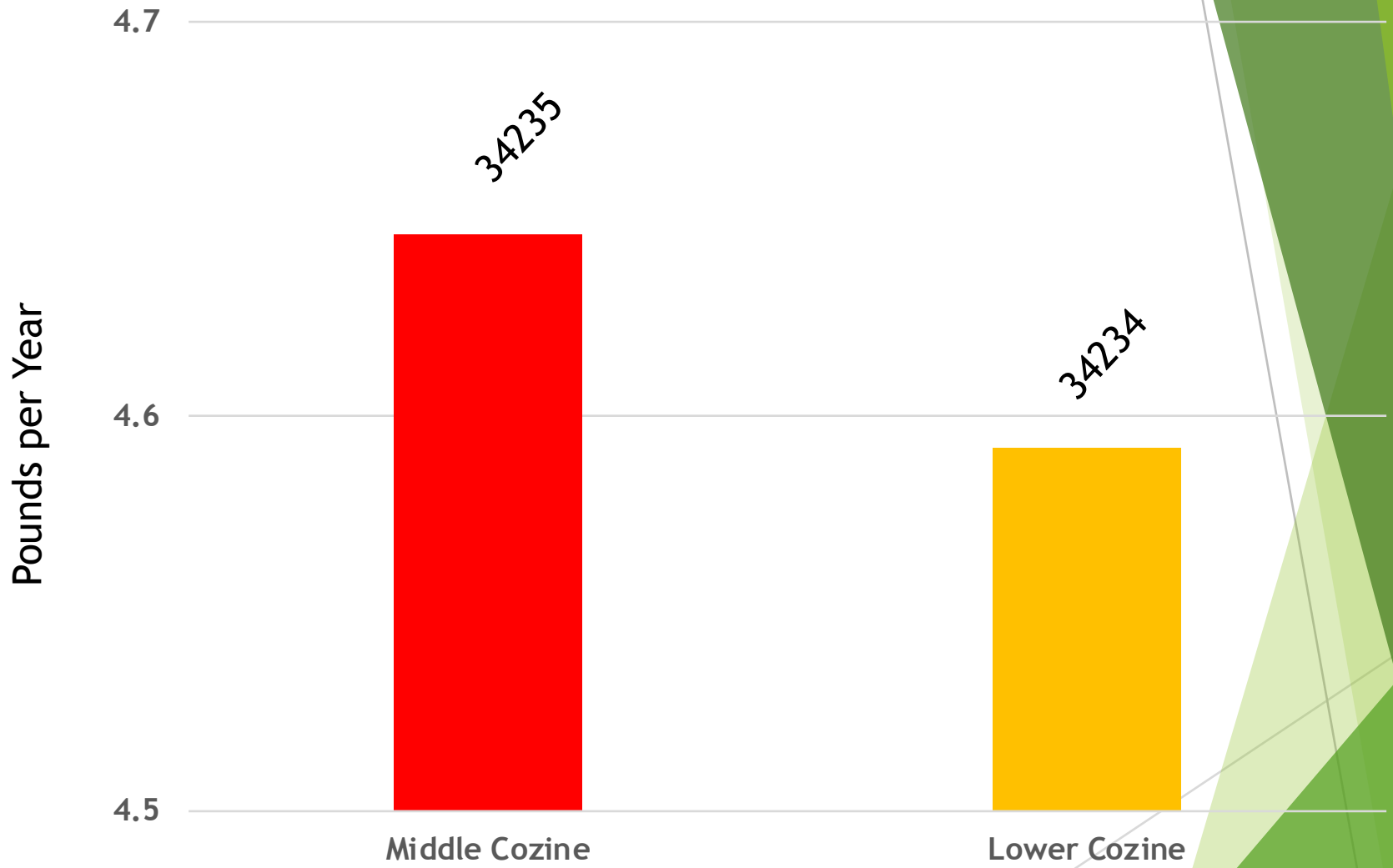
Yamhill 2018 Chlorpyrifos Average Concentration of Detections



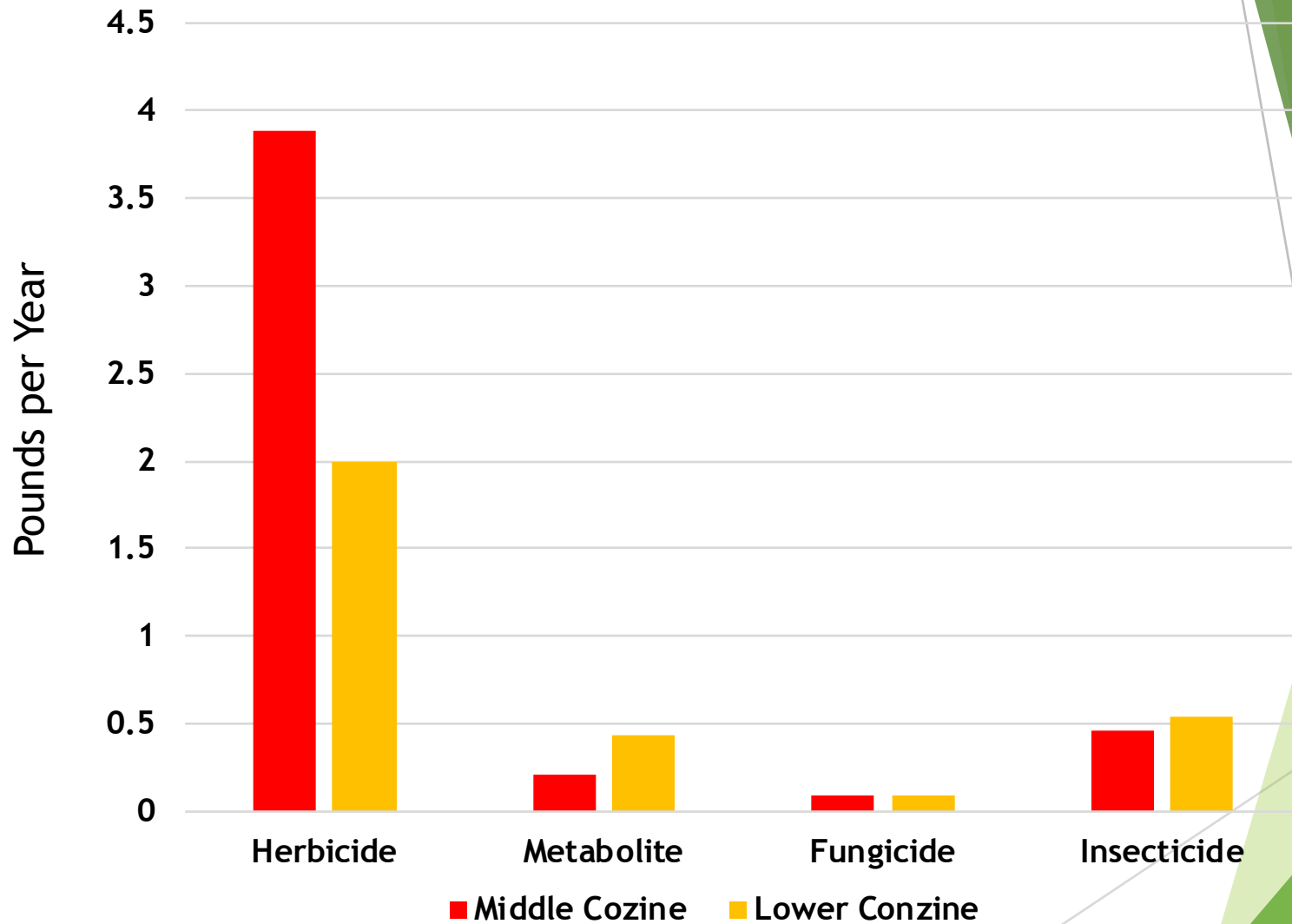
PSP Areas of Interest Mid-Coast Planning Partnership Greater Yamhill



Estimated Total Pesticide Loading (2018)



Estimated Total Pesticide Loading by Type (2018)



Yamhill 2018 Diuron Average Concentration of Detections

