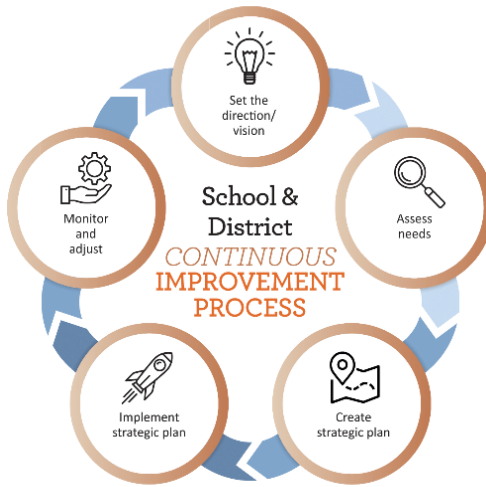


Supports for Districts with CSI-TSI Schools as they engage with the Continuous Improvement Process



SEPT. 2018 ODE releases new resources for districts	OCT.-FEB. 2019 Districts & Schools engage in needs assessment process	MARCH-JUNE 2019 Improvement Plans are developed	November 1, 2019 Districts submit Improvement Plans	2019-2020 School Year Districts continue implementation and begin installing routines to self monitor plan progress
---	---	---	---	---

NEW! Evidence-based tools to improve district and school systems:
 Tools aligned to Oregon Integrated Systems Framework (ORIS) developed by ODE and to be released in the fall of 2018: Includes a needs assessment guidance, a district and school level needs assessment and a continuous improvement plan template.

Continuum of Differentiated Supports to Engage in Continuous Improvement

Districts and schools participate in many state allocated programs and initiatives – all of which support continuous improvement.

Continuum of Supports for Districts ↓	Assessing Needs	Creating Improvement Plan	Plan Implementation	Developing District Routines to Self-Monitor Plan Implementation
All Districts (and districts with no CSI or TSI schools)	A host of federal and state initiatives and programs are available to districts in Oregon. Examples include Title I-A Basic Programs, 21 st Century Grants, the State Personnel Development Grant (SPDG-MTSS), High School Success, Chronic Absenteeism, English Learner Success, CTE and more. Each initiative or program supports aspects of the continuous improvement process through diagnostic needs assessments or with implementation efforts.			
Opportunity and Innovation Districts	Additional improvement supports for districts with fewer numbers or percentages of CSI-TSI schools will be afforded to districts, in a differentiated manner, as aligned to local context and need, and with consideration of district participation in other federal and state supports (such as those listed above).			
Primary Partner Districts	Districts with significant numbers or percentages of CSI-TSI schools will receive the most intensive supports and resources, including a district improvement liaison that guides the continuous improvement process. The district improvement liaison is charged with supporting the district leadership team to ensure collaboration and connection with any other state-leveraged initiative, program and coach or consultant supporting the district.			