

Developing Oregon's 20-year Landscape Resiliency Strategy

**Stakeholder Meeting #3
November 8th, 2022**

Welcome, Introductions, Updates

Introductions

Updates

Our Task

“20-year strategic plan that prioritizes restoration actions and geographies for wildfire risk reduction that can be used to direct federal, state, and private investments in a tangible way”

Path to Oregon's 20-Year Strategic Plan

Phase 1: → July 2022

Build the Foundation

- Shared vision
- Governance structure
- Engagement with Sovereign Nations
- Stakeholder engagement
- Framework for plan development

Phase 2: July - Dec 2022

Compile Information

- ID and gather reports, maps, data, etc.
- Priorities from existing plans
- Produce supporting materials (priority maps, capacity & readiness assessment, etc.)
- Develop goals and targets
- ID steps to achieve goals
- Develop metrics and accountability mechanisms

Phase 3: Jan - Jun 2023

Draft the Plan

- Draft
- Review
- Finalize and endorse
- Publish

Phase 4: July 2023 →

Implement the Plan

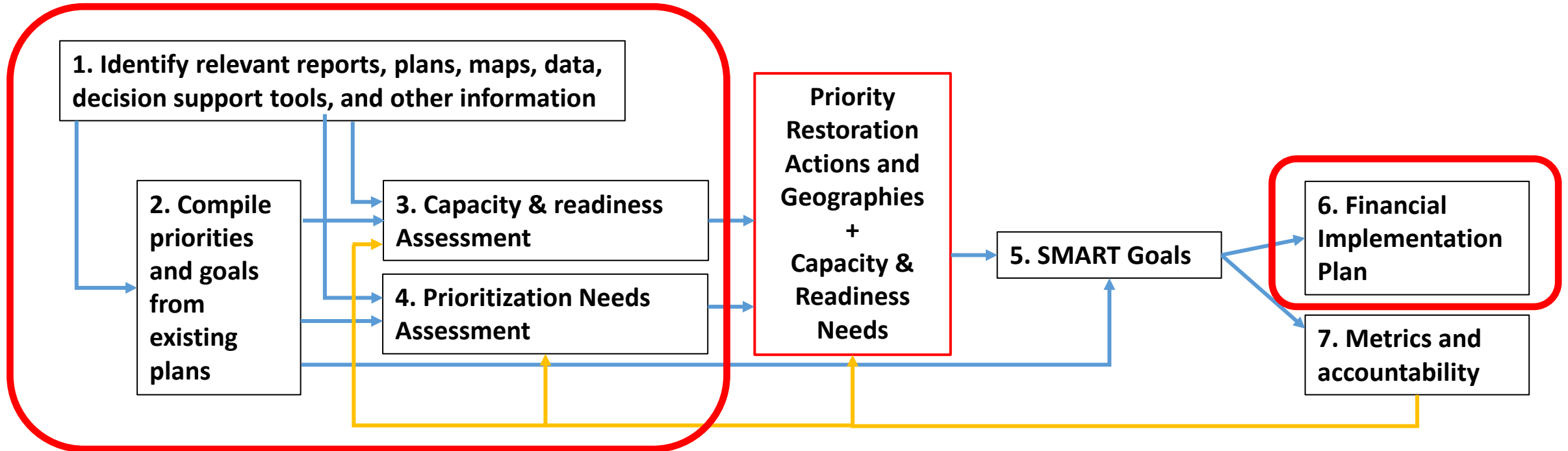
- Plan roll-out
- S2 conference?
- Governance meetings
- Accountability reviews
- Adaptive management

Products Needed to Produce the 20 year Plan

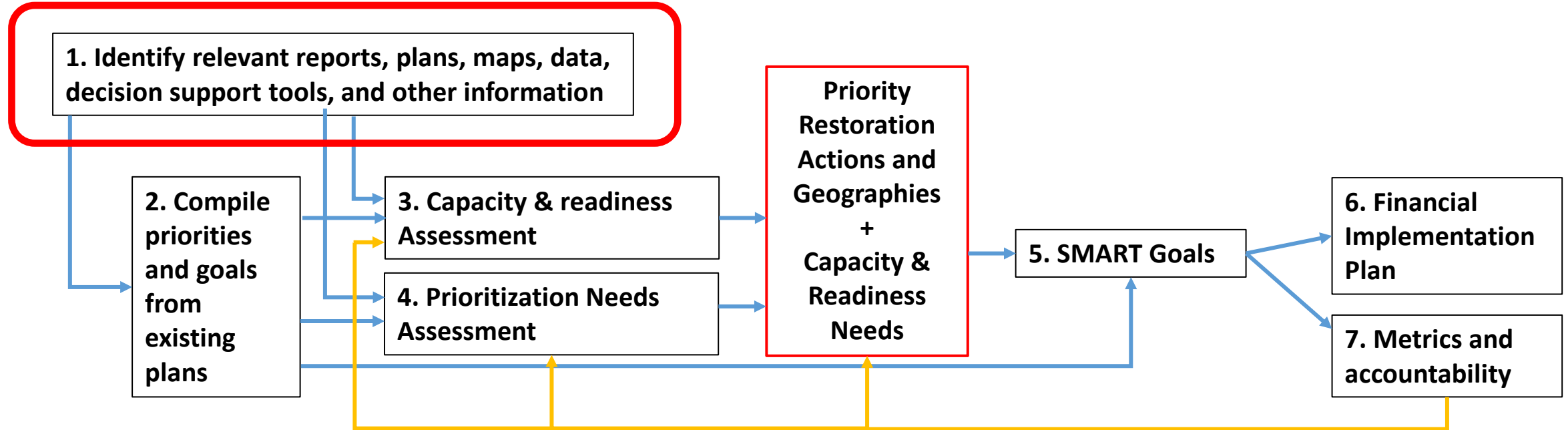
July-December 2022

- 1. Relevant reports, plans, maps, data, decision-support tools, etc.**
- 2. Compilation of priorities from existing plans**
- 3. Prioritization Mechanism and resulting priorities**
- 4. Capacity & readiness assessment**
- 5. Process for setting goals targets and actions, and results**
- 6. Investment Strategy**
- 7. Metrics and accountability mechanisms**

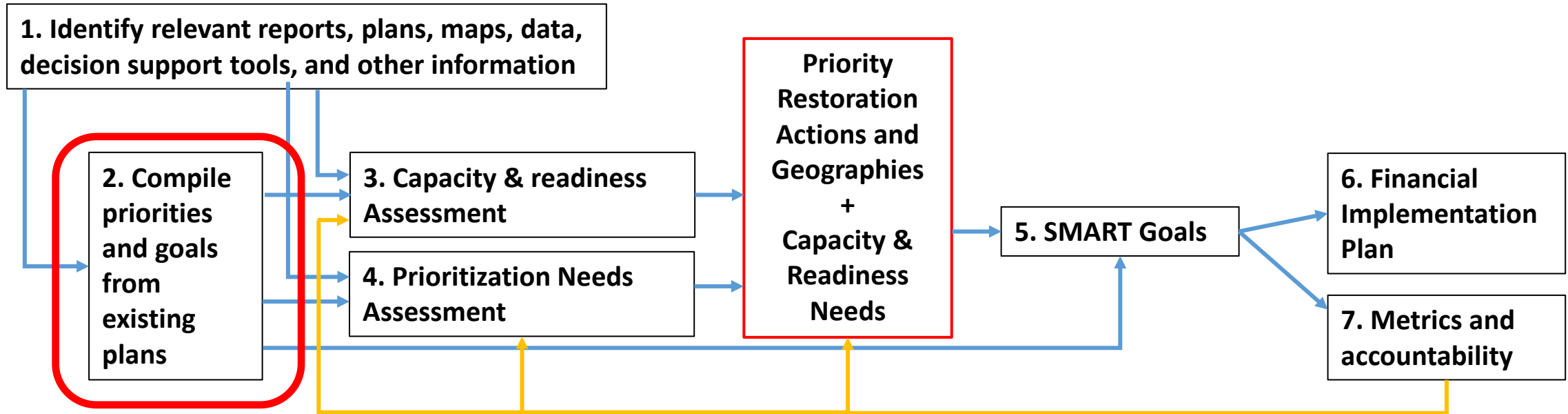
How the Workstreams Fit Together



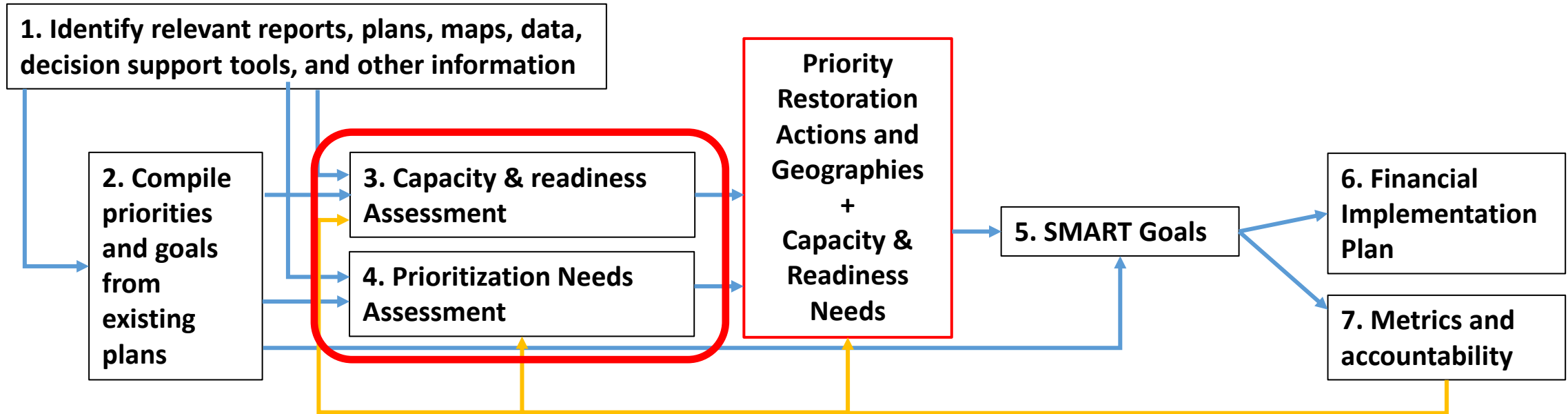
How the Workstreams Fit Together



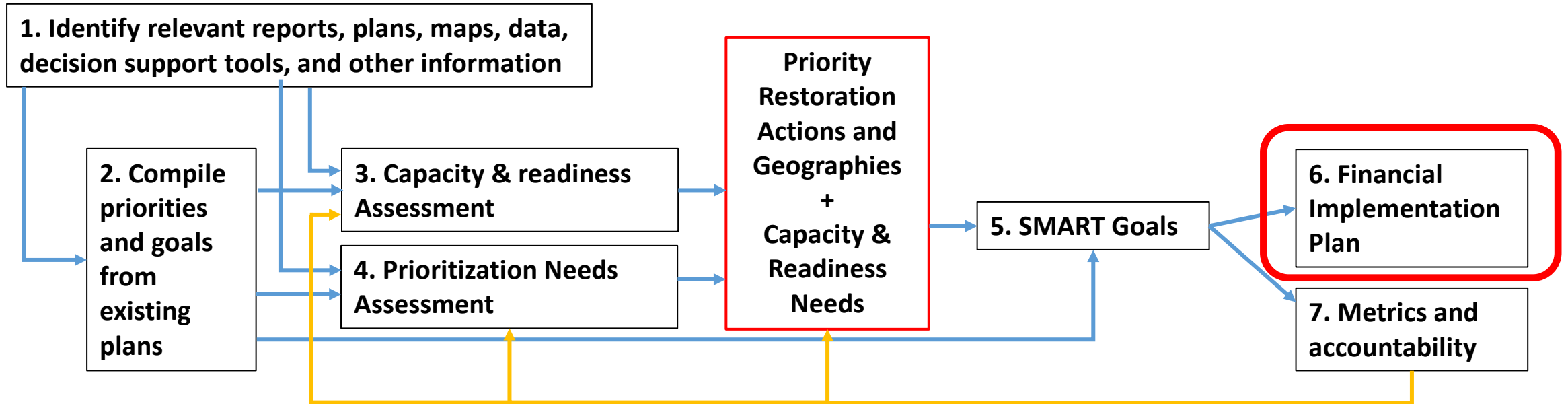
How the Workstreams Fit Together



How the Workstreams Fit Together



How the Workstreams Fit Together



3. Capacity & Readiness Assessment

Purpose

- Identify where conditions are in place for near-term implementation
- Identify where conditions are not in place and what the gaps are
- Identify what needs to be done to create the necessary conditions for implementation

Considerations (examples)

- Human
- Legal
- Planning and Implementation
- Infrastructure
- Community/social

3. Capacity & Readiness Assessment

Human

- Communities with capacity and/or a track record for success and innovation, while supporting communities to build capacity.
- Operational area of Collaboratives/cooperatives/partnerships.

To hear from these local/regional groups, we are taking multiple steps:

1. An online survey
2. Follow up from the survey to obtain more detailed information.
3. Development of a long-term engagement plan

3. Capacity & Readiness Assessment

Legal

- Federal lands with treatment projects currently approved under the National Environmental Policy Act (NEPA)
- CEs, EAs, EISes
- Planned NEPA areas or in progress
- Other permitting?

Planning and Implementation

- Projects recently completed or in process (GNA, Joint Chiefs, etc. for each agency)
- Areas with management plans (NF, etc.)
- Agency priority areas and actions
- Areas that have completed locally-led spatial prioritization efforts

3. Capacity & Readiness Assessment

Infrastructure

- Location of wood processing infrastructure: Mill/utilization locations
- Machinery; roads; trucks

Community/Social

- Counties/municipalities with local funding for treatment

4. Prioritization Needs Assessment

- A. Proposed approach to prioritization
- B. Prioritization Criteria
- C. Restoration Needs Assessment (Near-term)
- D. Restoration Needs Assessment Decision-Support Tool
- E. Identifying priorities

Prioritization Topics

- A. Proposed approach to prioritization
- B. Prioritization Criteria**
- C. Restoration Needs Assessment (Near-term)**
- D. Restoration Needs Assessment Decision-Support Tool
- E. Identifying priorities

Prioritization Criteria

Data source unknown

- Communities at high risk of losing wood processing infrastructure
- Communities at high risk of losing wood processing workforce.
- Communities with capacity and/or a track record for success and innovation, while supporting communities to build capacity where needed
- Design the projects to involve existing forest-based and range-based contracting entities

Need clarification

- Focusing on treatments protective of watershed health
- Priority aquatic and terrestrial ecosystems (and species locations)

Short Term Mapping Products

How are they going to be used?

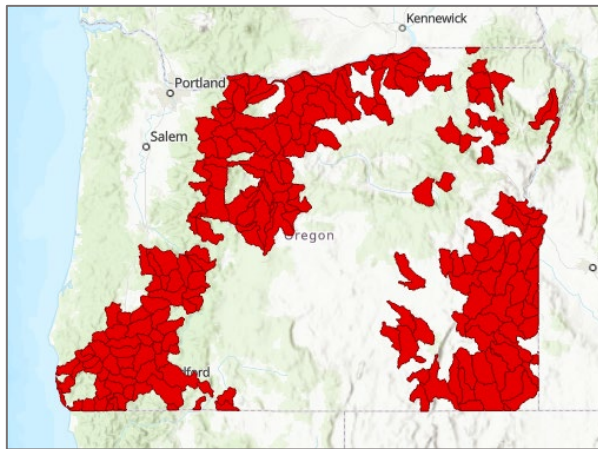
What is the current need from these maps?

Purpose and Deliverable

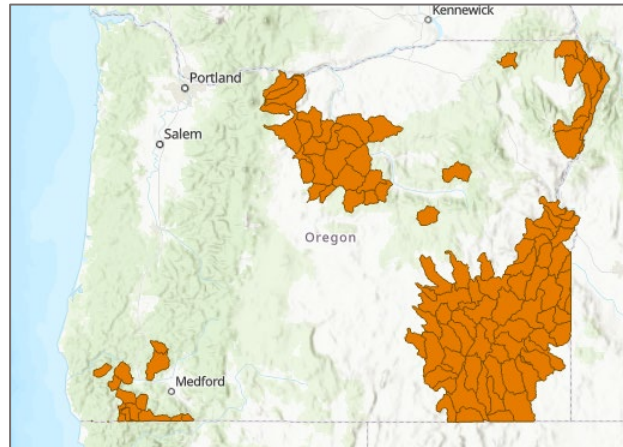
Develop a 20-year strategic plan that prioritizes restoration actions and geographies for wildfire risk reduction that can be used to direct federal, state, and private investments in a tangible way.

Reduce wildfire risk through the restoration of landscape resiliency and the reduction of hazardous fuel on public or private forestlands and rangelands and in communities near homes and critical infrastructure.

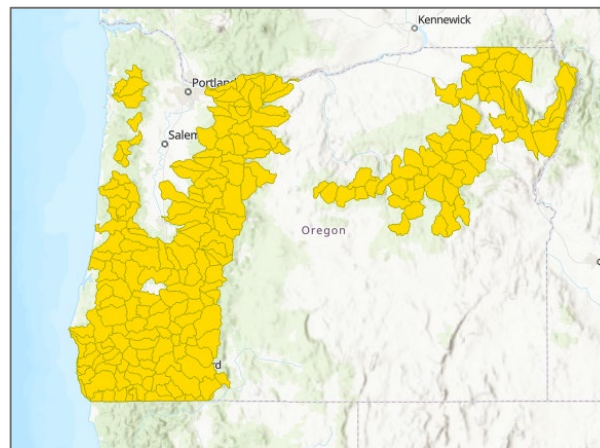
Wildfire Risk and Restoration Need



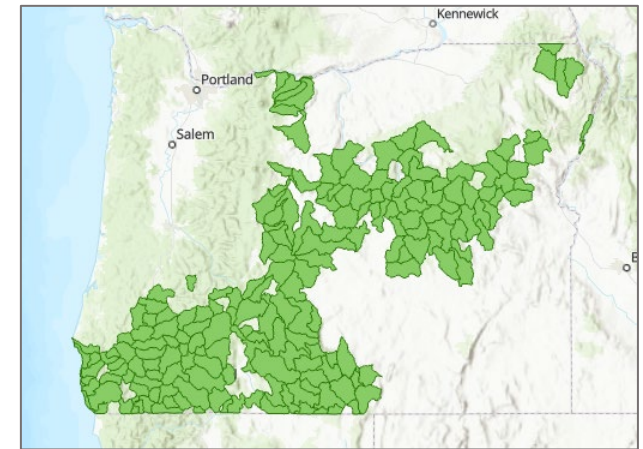
Wildfire Risk



Burn Probability



Fire Intensity



Forest Disturbance Restoration Need

What is Wildfire Risk?

Burn probability is a long-term estimate of the likelihood that a location will experience wildfire based on historical fire locations, weather records, and current landscape conditions.



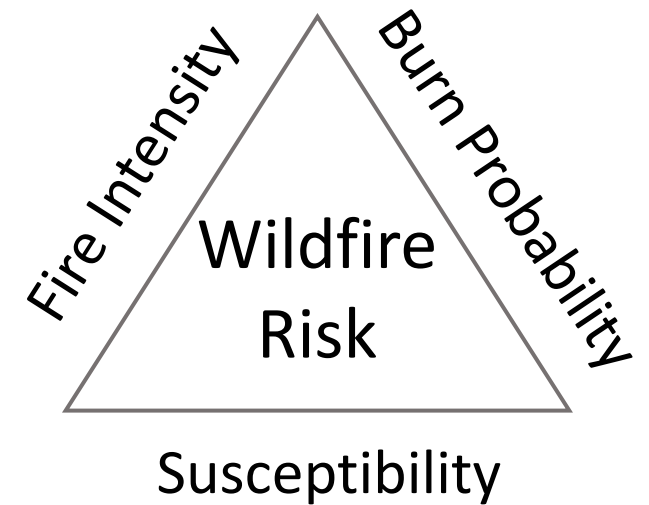
Fire intensity predicts the **flame length** a fire may produce at a given location using factors such as vegetation structure and type, topography, and weather records.

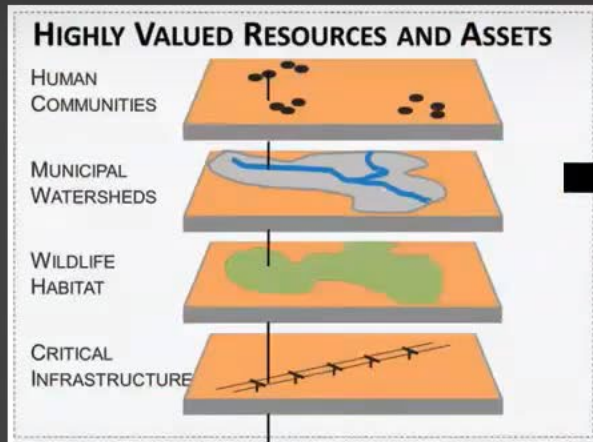
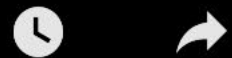


Susceptibility measures the impact a fire may have on structures, infrastructure, wildlife habitat, and other resources and assets.



Overall wildfire risk measures the likelihood of a large wildfire occurring, the estimated intensity of a wildfire if it occurs, and how much damage it is likely to cause.

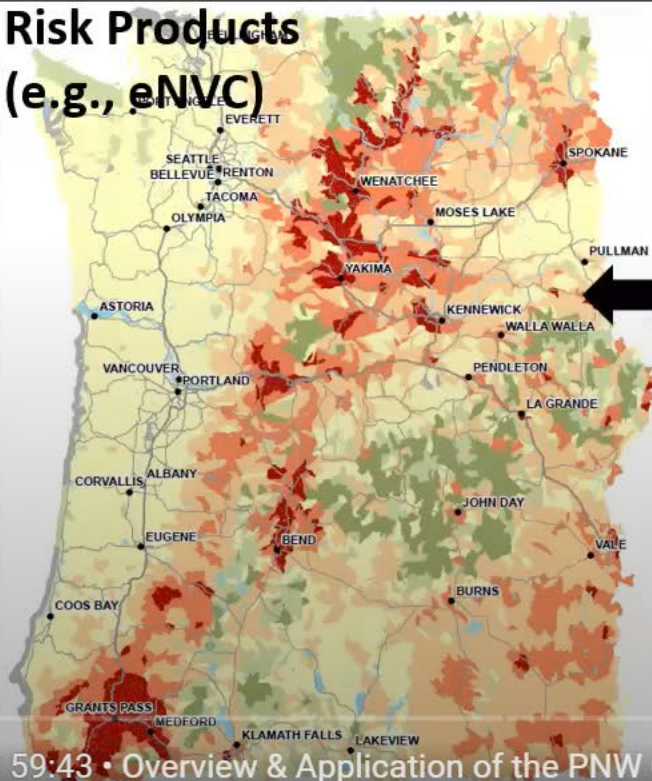




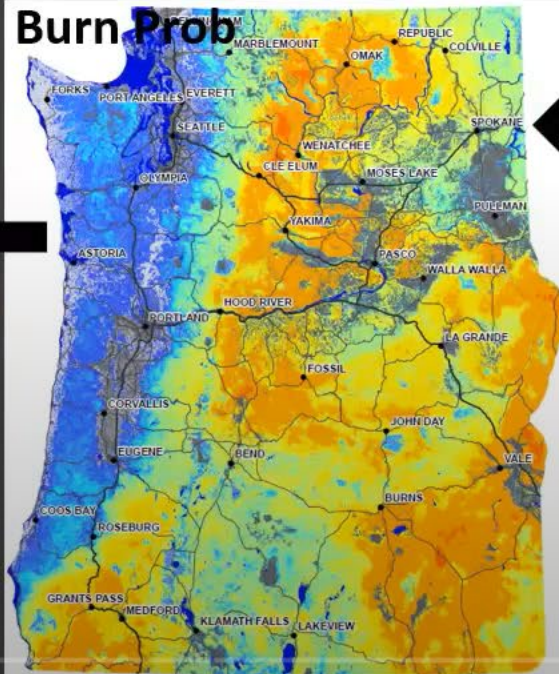
Response Functions (Resource Specialists)

Sub-HVRA	FIL1	FIL2	FIL3	FIL4	FIL5	FIL6	spark
Cell towers	-10	-20	-40	-60	-80	-90	-----
Electric transmission lines	20	20	0	-20	-60	-80	-----
FS Repeaters	-10	-20	-40	-60	-80	-90	-----
Wooden bridges	-40	-50	-60	-70	-80	-90	-----
Other comm sites	-10	-20	-40	-60	-80	-90	-----

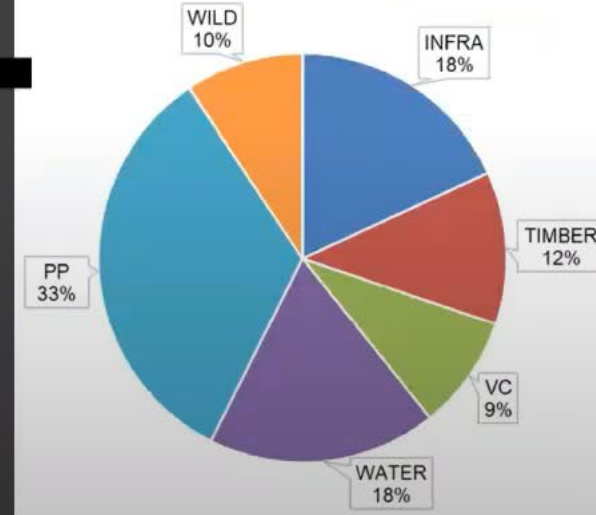
Risk Products (e.g., eNVC)



Burn Prob



PNRA Overall Relative Importance



Ranking: (Line Officers)

Play (k)

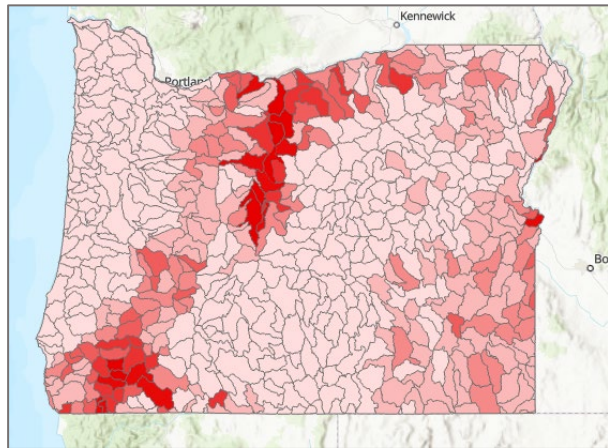
Glossary

Forest Disturbance Restoration Need: The percent of forestland requiring disturbance based restoration such as thinning or prescribed burning to return to a condition similar to that which was present prior to European settlement.

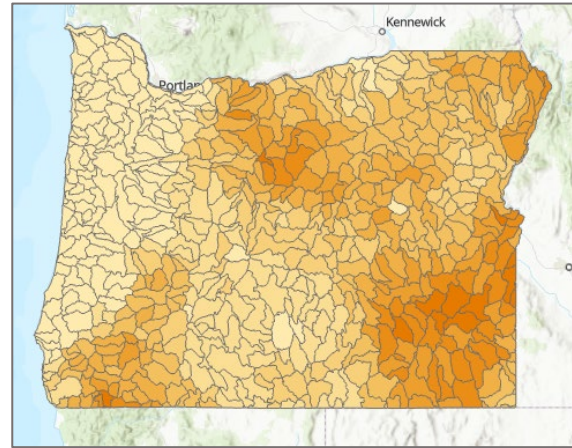
Forest Succession Restoration Need: The percent of forestland requiring regrowth and progression through successional stages to return to a condition similar to that which was present prior to European settlement.

Social Vulnerability: A measure of how socially vulnerable a place is relative to other places in the state based Centers for Disease Control (CDC) methodology that combines US Census Bureau data on socioeconomic status, household composition/disability, minority status/language, and transportation/housing type.

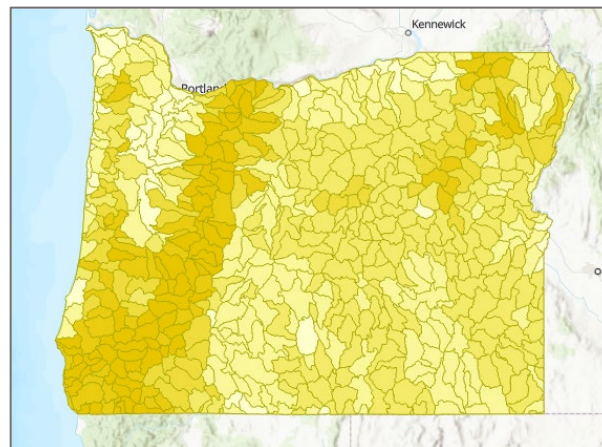
Wildfire Risk and Restoration Need



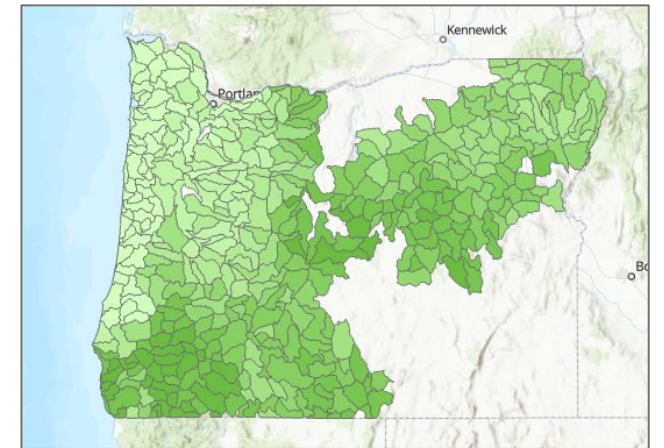
Wildfire Risk



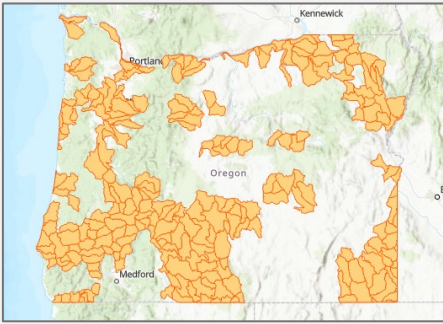
Burn Probability



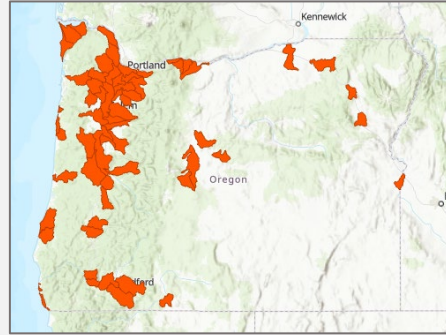
Fire Intensity



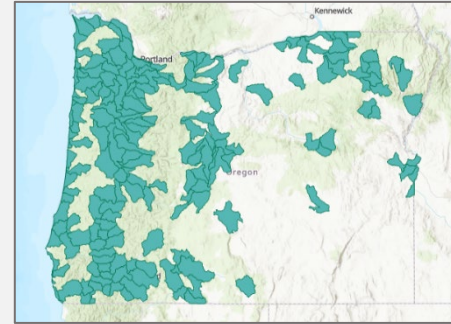
Forest Disturbance Restoration Need



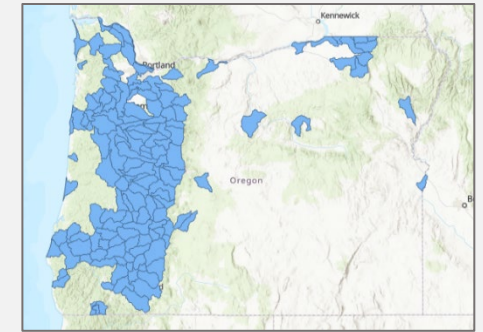
Social Vulnerability



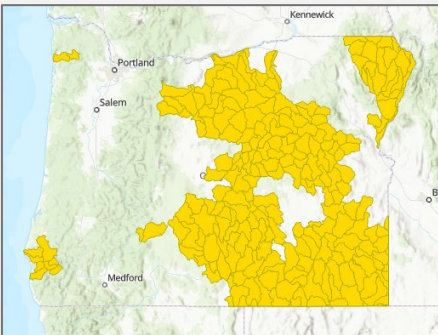
Human Life



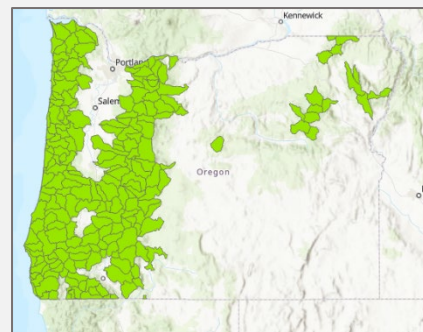
Property



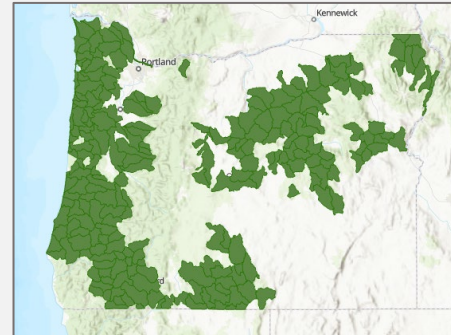
Drinking Water Source Areas



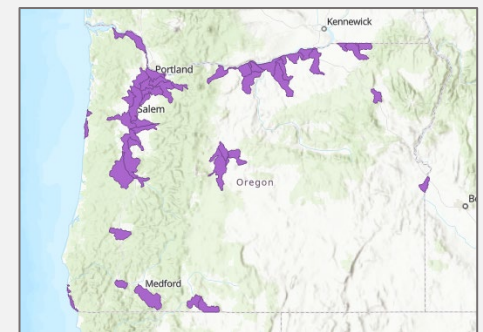
Rural Populations



Timber Volume

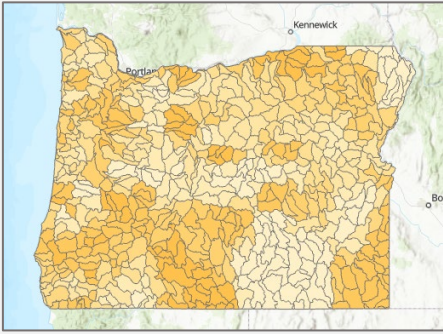


Forest Succession
Restoration Need

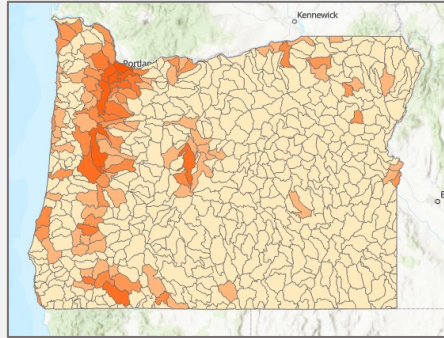


Critical Infrastructure

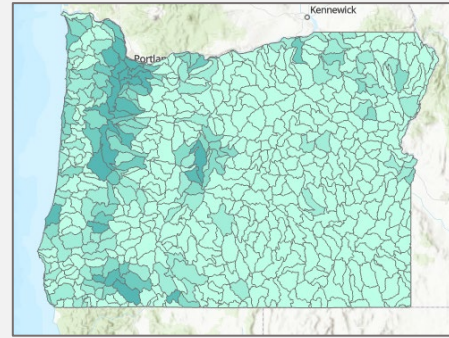
Preliminary maps for illustrative purposes only.



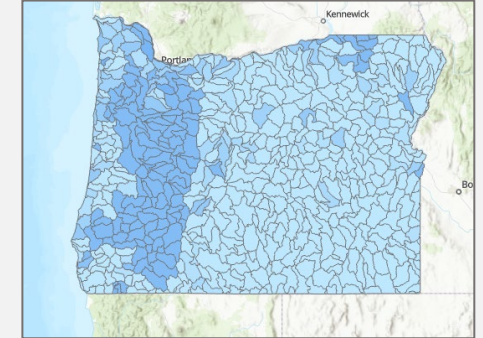
Social Vulnerability



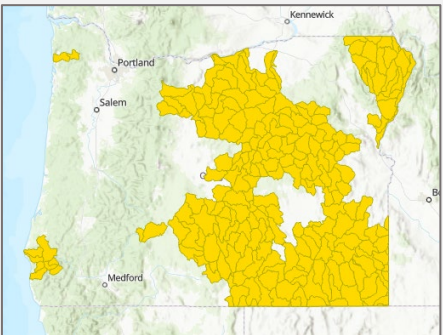
Human Life



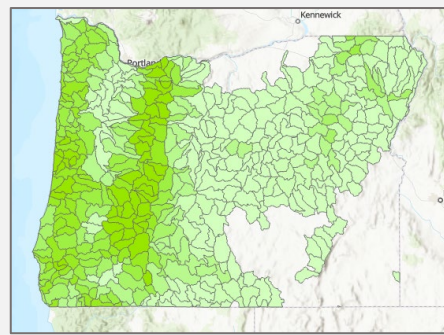
Property



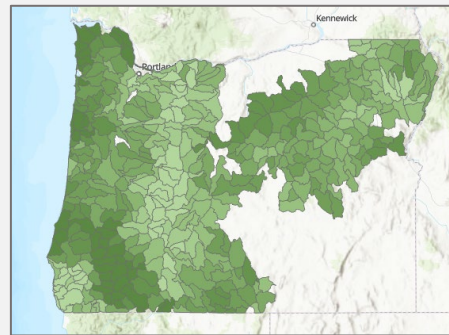
Drinking Water Source Areas



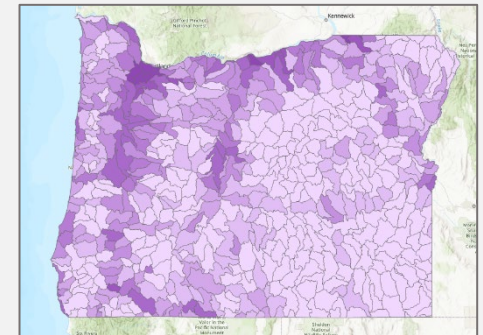
Rural Populations



Timber Volume



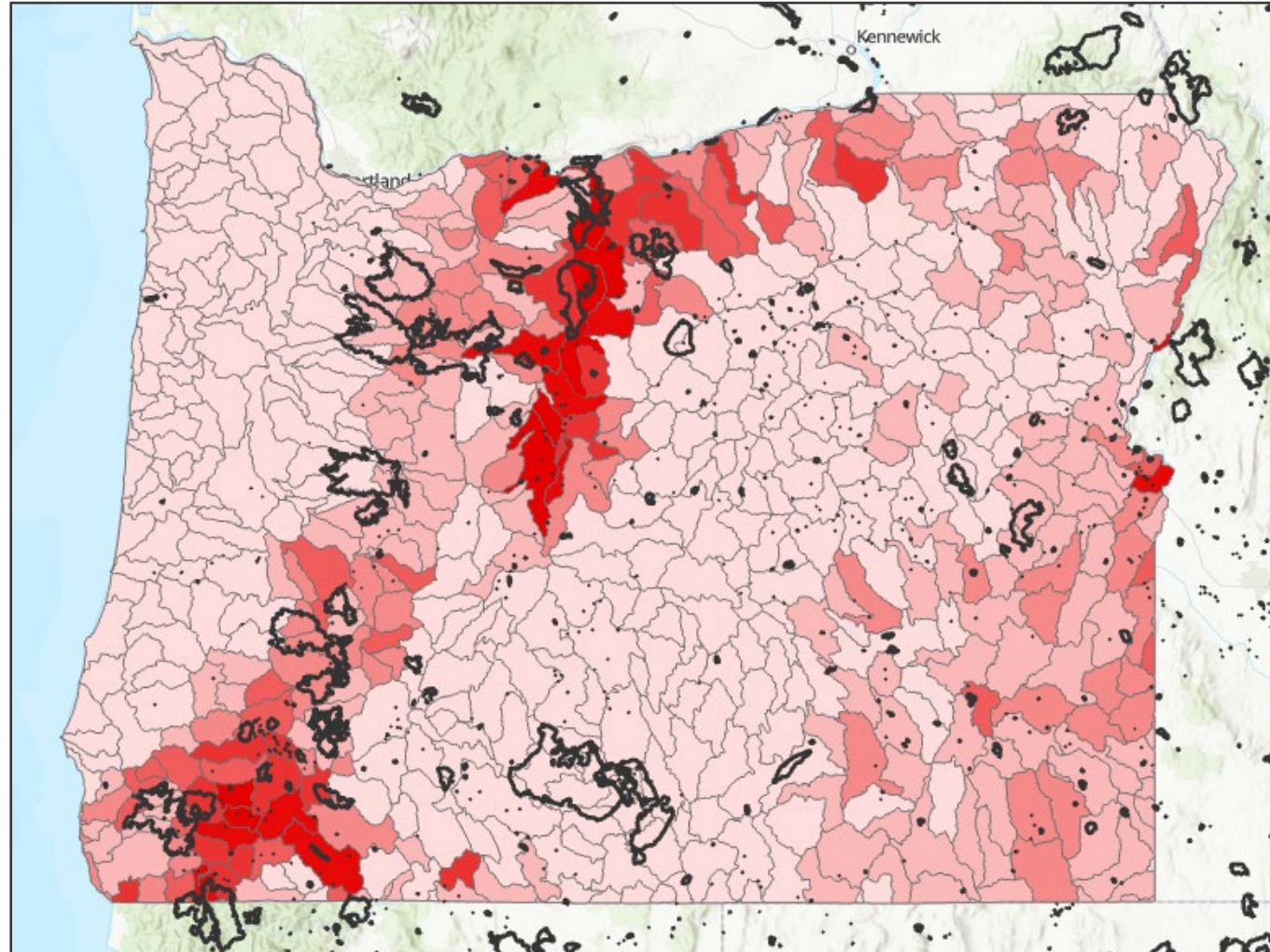
Forest Succession
Restoration Need



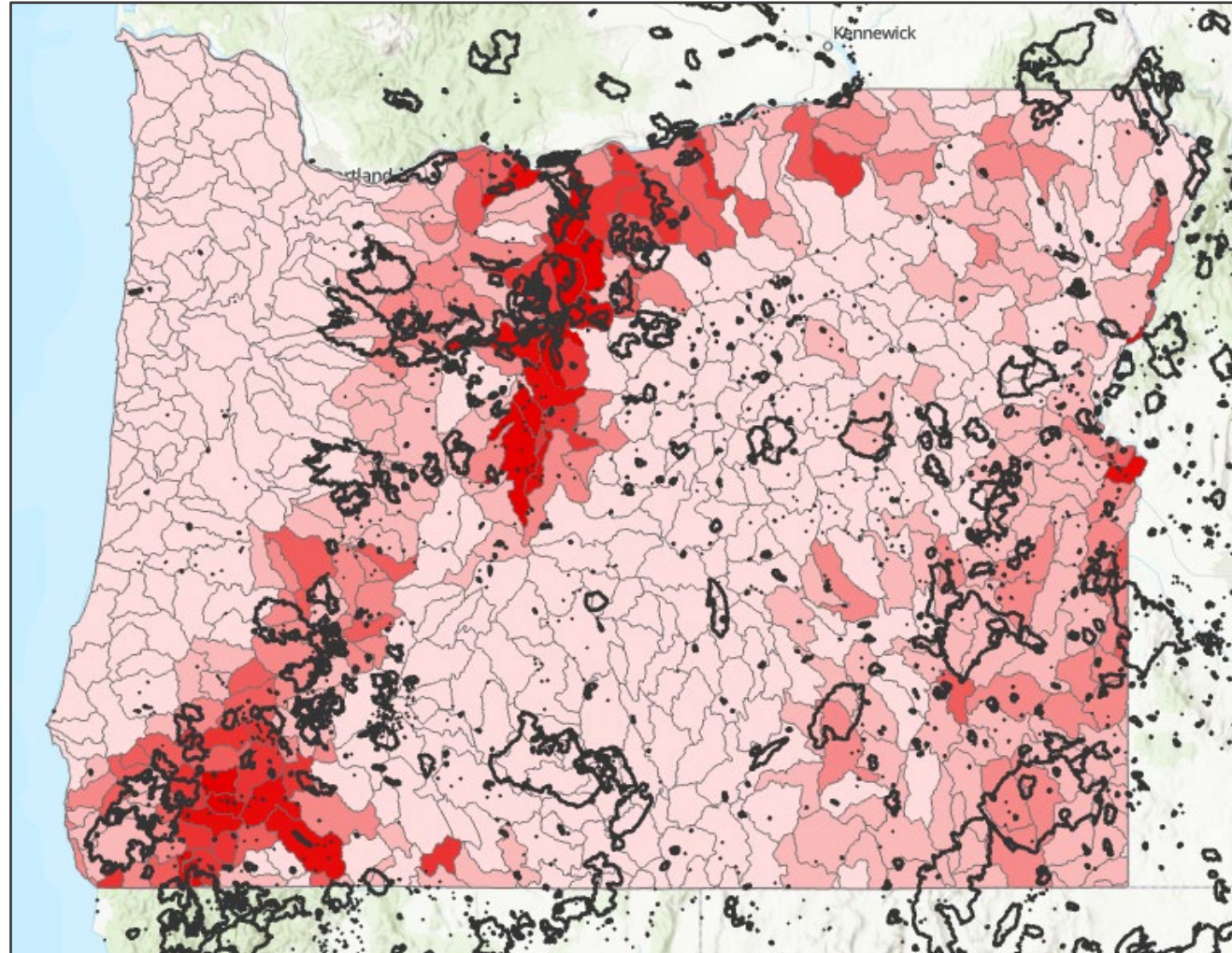
Critical Infrastructure

Preliminary maps for illustrative purposes only.

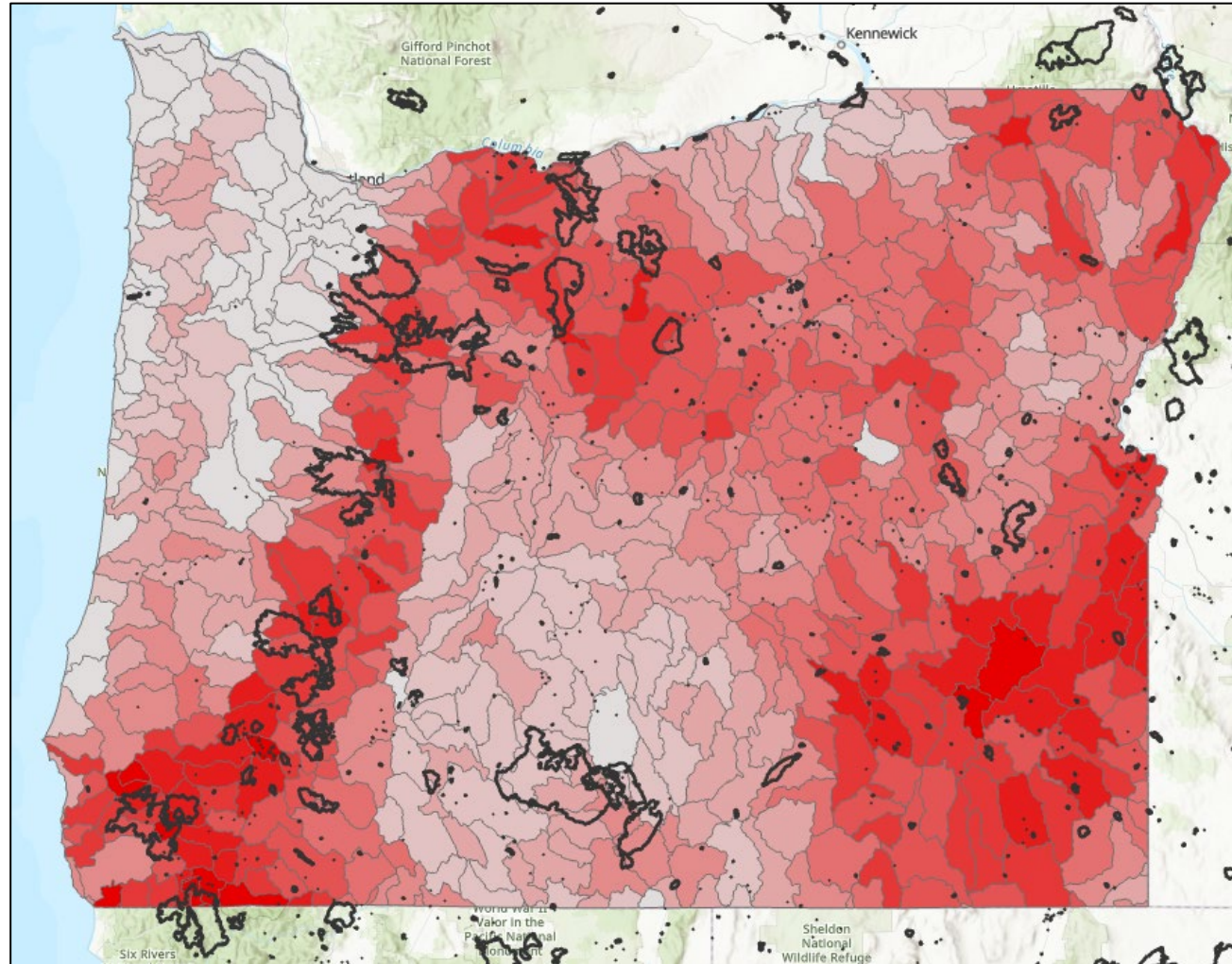
Wildfire Risk and Fire History (2018-2022)



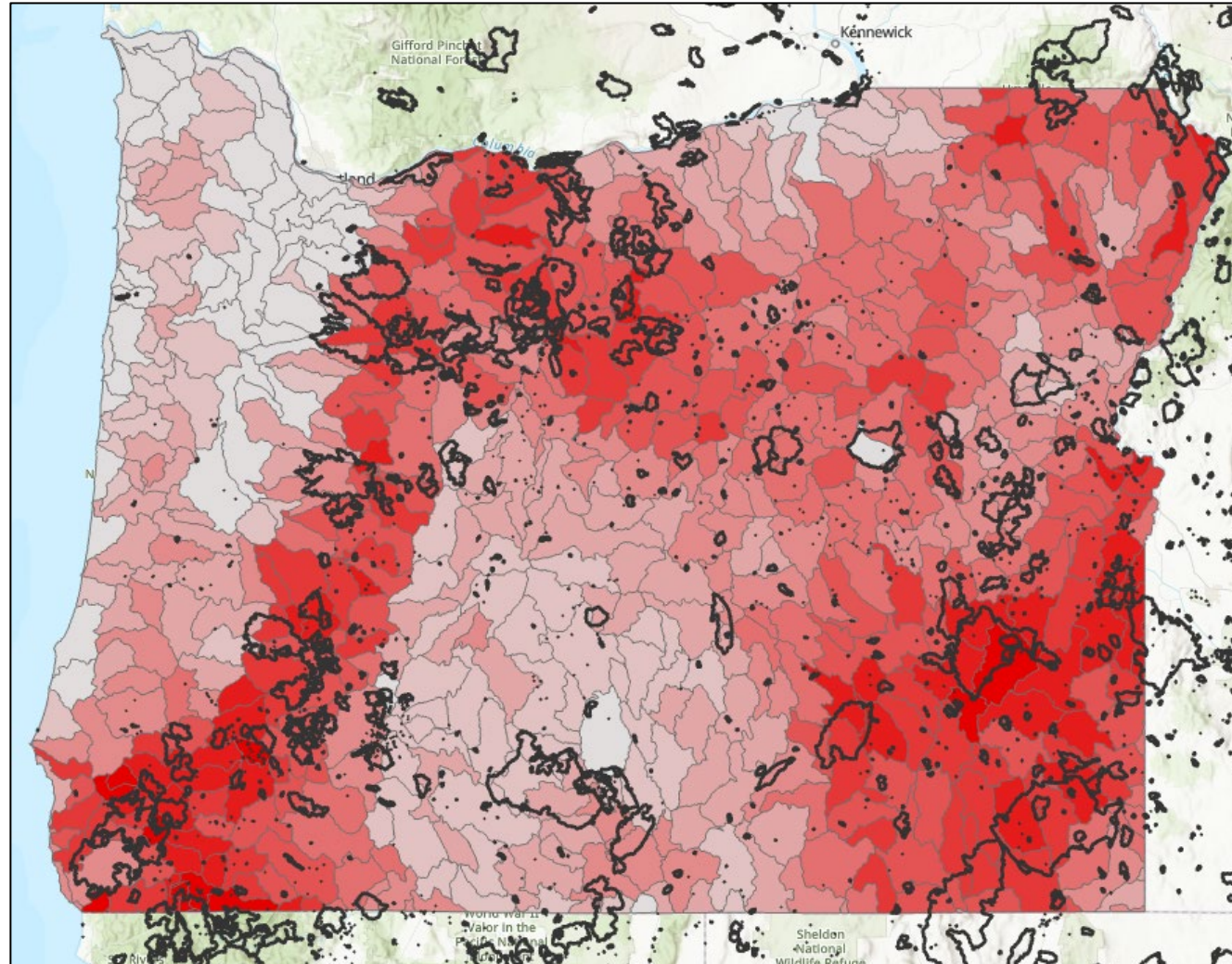
Wildfire Risk and Fire History (2012-2022)



Burn Probability/Intensity and Fire History (2018-2022)

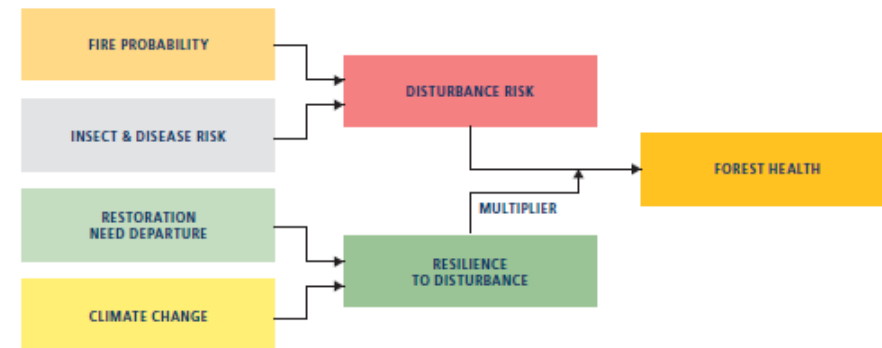


Burn Probability/Intensity and Fire History (2012-2022)

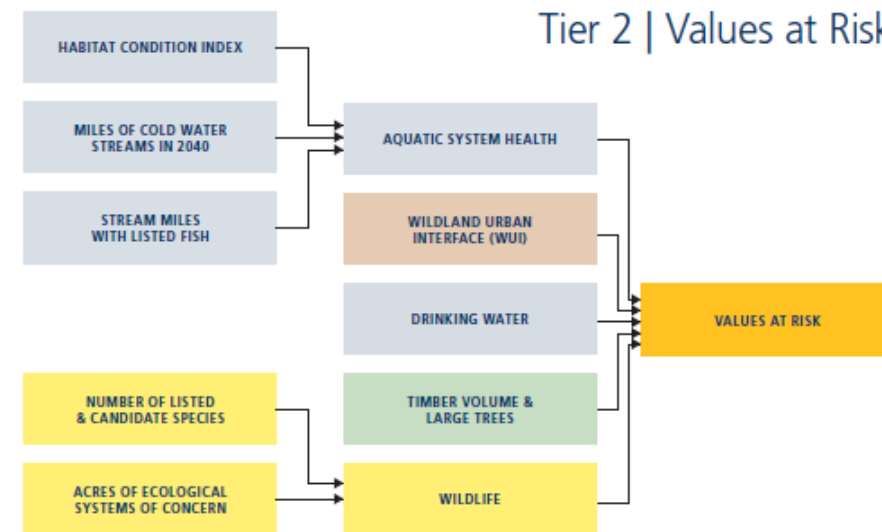


Washington's Approach in the 20-Year Forest Health Strategic Plan for Eastern Washington

Tier 1 | Forest Health



Tier 2 | Values at Risk



SB 762

In selecting and administering projects, the department shall... identify strategic landscapes that are ready for treatment, giving priority to projects within the landscapes that are:

- (A) On lands in the four highest eNVC risk classes identified in the United States Forest Service report titled “Pacific Northwest Quantitative Wildfire Risk Assessment: Methods and Results” and dated April 9, 2018
- (B) Inclusive of federal lands with treatment projects currently approved under the National Environmental Policy Act (42 U.S.C. 4321 et seq.);
- (C) Focusing on treatments protective of human life, property, critical infrastructure, watershed health and forest or rangeland habitat restoration; and
- (D) Part of a collaborative partnership with agreements across diverse forestland or rangeland stakeholders

Data Tiers



- **Level 1:** Used to identify HUC10 Watershed based priority areas
- **Level 2:** Summarized at the HUC10 Watershed level to support decision making
- **Level 3:** Supplementary datasets that will not be summarized

Level 1	Level 2	Level 3
Wildfire Risk	Social Vulnerability: County Subdivision	Social Vulnerability: Block Group
Forest Restoration Need (Disturbance)	Forest Restoration Need (Succession)	Forest Dependent Communities
Rangeland Restoration Need	Rural Populations	Inventoried Roadless Areas
	Human Life	Wild and Scenic Rivers
	Critical Infrastructure	National Monuments
	Property (Building Footprints)	Areas of Critical Env. Concern
	Land Ownership	Wilderness Study Areas
	Timber Resources	USFWS Critical Habitat
	Species & Habitats (details TBD)	Conservation Strategy Habitats
	Drinking Water Source Areas (GW & SW)	Outdoor Recreation Locations
	Importance for Surface Drinking Water	Oregon Watershed Restoration Inventory
	Departures?	Burn Perimeters
		Modeled Future Fire Environment
		Forest Collaboratives
		NEPA Project Areas
		Other project areas (LRP, RCPP...)

Short Term Mapping Products

How are they going to be used?

What is the current need from these maps?

Thank you!