

# **Developing Oregon's 20-Year Landscape Resiliency Strategy**

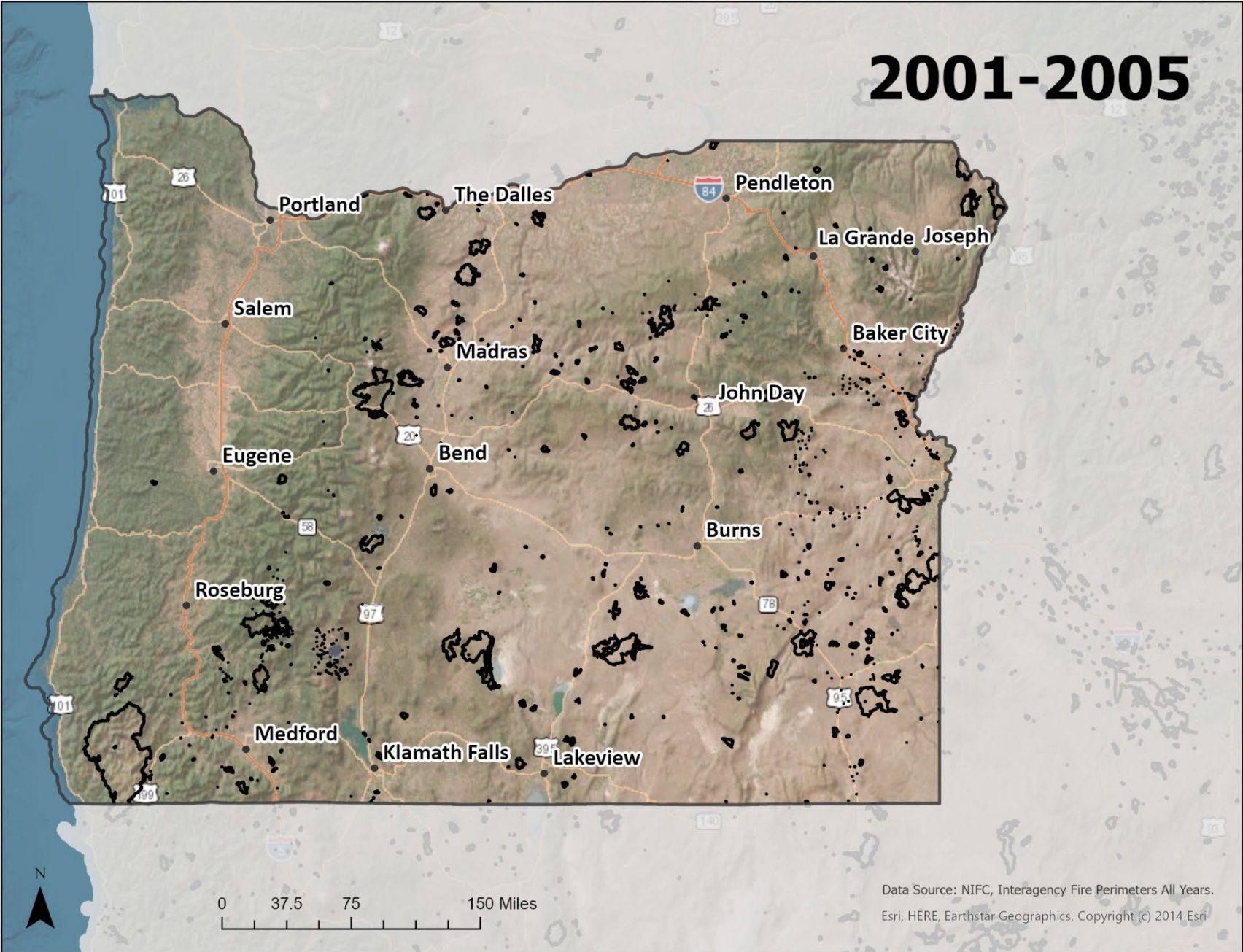
**Regional Informational Webinar**

**12.15.2022**



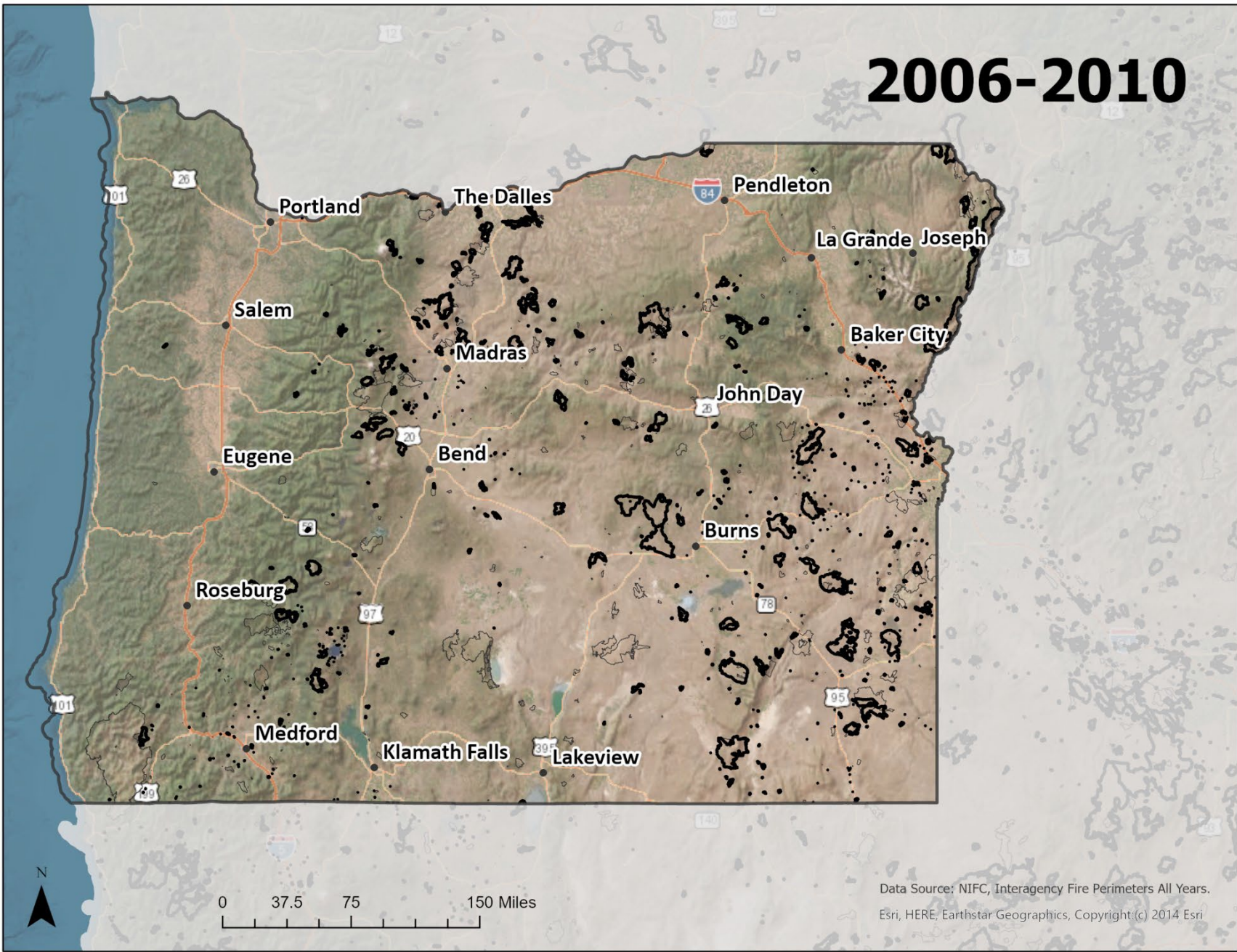
Data Source: NIFC, Interagency Fire Perimeters All Years.  
Esri, HERE, Earthstar Geographics, Copyright:(c) 2014 Esri

# 2001-2005



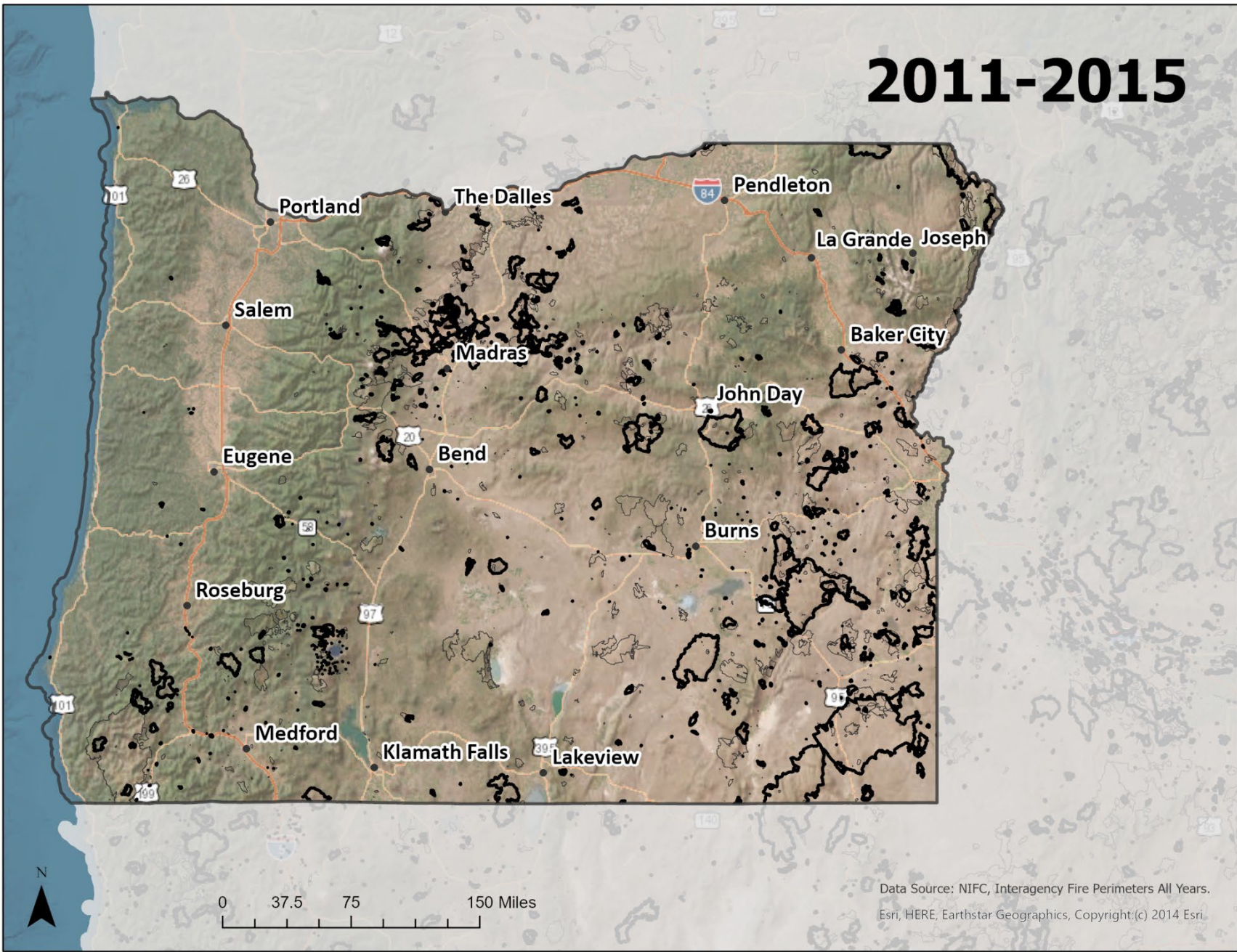
Data Source: NIFC, Interagency Fire Perimeters All Years.  
Esri, HERE, Earthstar Geographics, Copyright (c) 2014 Esri

# 2006-2010



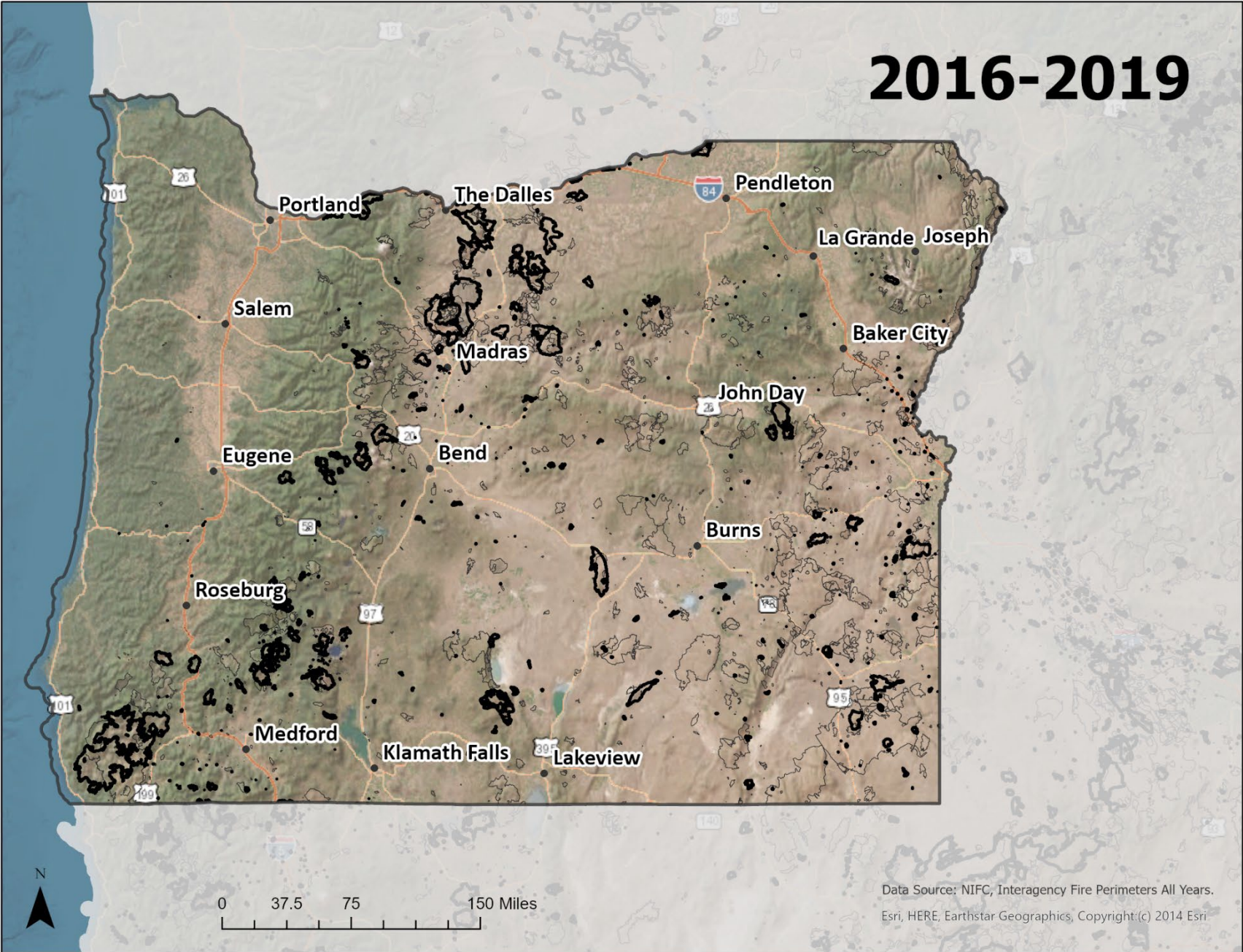
Data Source: NIFC, Interagency Fire Perimeters All Years.  
Esri, HERE, Earthstar Geographics, Copyright:(c) 2014 Esri

# 2011-2015



Data Source: NIFC, Interagency Fire Perimeters All Years.  
Esri, HERE, Earthstar Geographics, Copyright:(c) 2014 Esri.

# 2016-2019



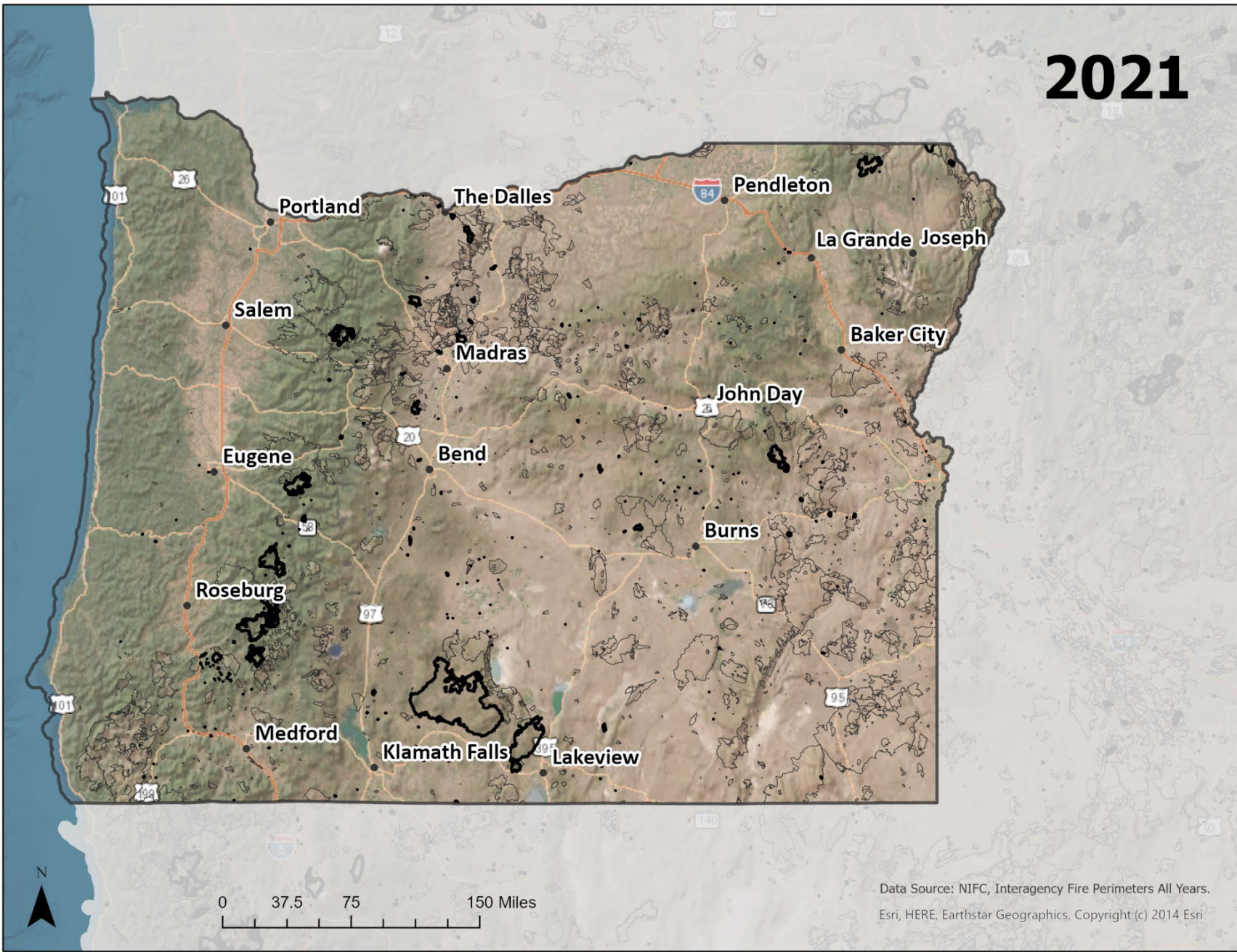
Data Source: NIFC, Interagency Fire Perimeters All Years.  
Esri, HERE, Earthstar Geographics, Copyright:(c) 2014 Esri

# 2020



Data Source: NIFC, Interagency Fire Perimeters All Years.  
Esri, HERE, Earthstar Geographics, Copyright:(c) 2014 Esri

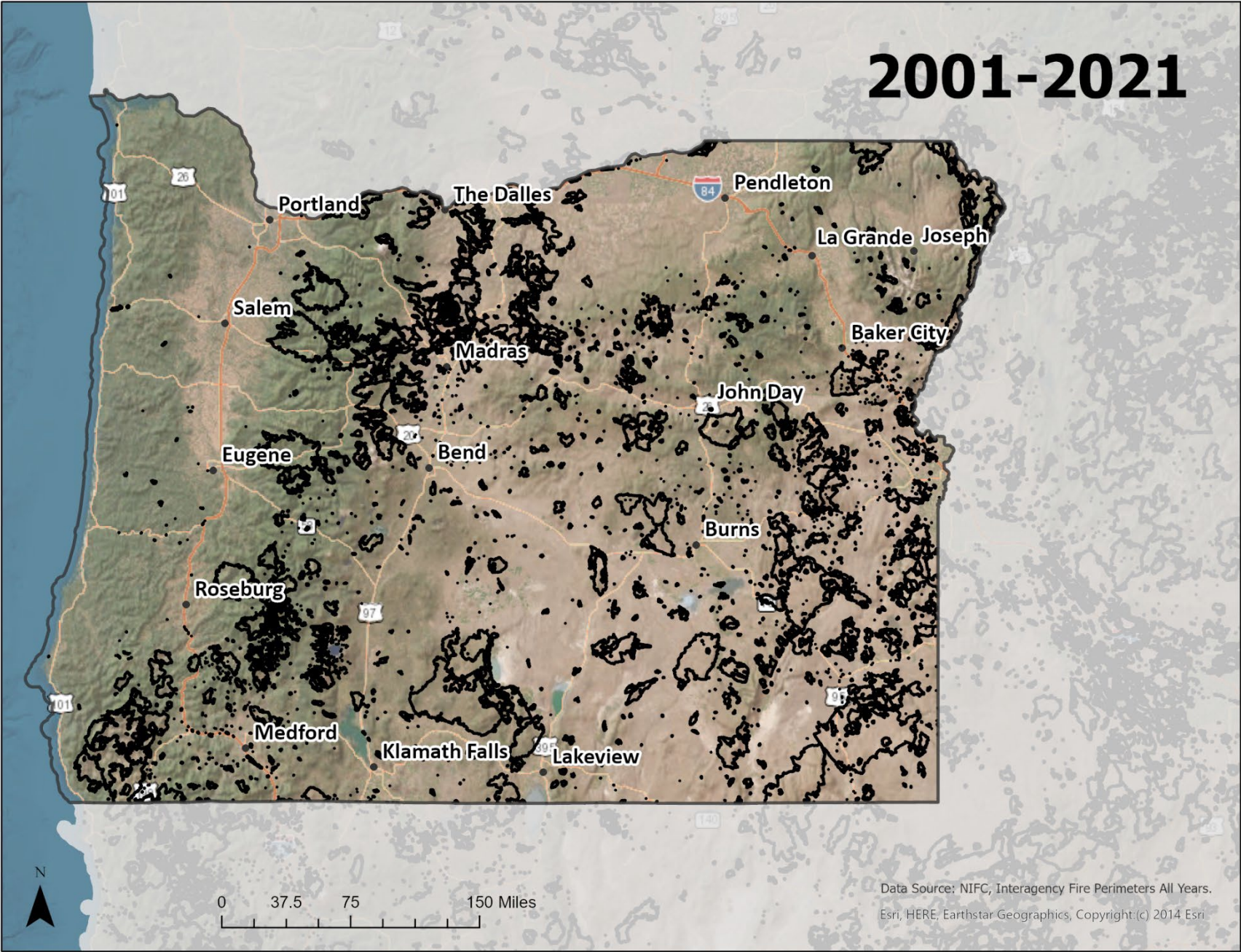
# 2021



Data Source: NIFC, Interagency Fire Perimeters All Years.  
Esri, HERE, Earthstar Geographics, Copyright:(c) 2014 Esri



# 2001-2021



Data Source: NIFC, Interagency Fire Perimeters All Years.  
Esri, HERE, Earthstar Geographics, Copyright: (c) 2014 Esri

# Shared Stewardship MOU and Senate Bill-762

“20-year strategic plan that prioritizes restoration actions and geographies for wildfire risk reduction that can be used to direct federal, state, and private investments in a tangible way”

# Path to Oregon's 20-Year Strategic Plan

Phase 1: Jan → July 2022

## Build the Foundation

- Shared vision
- Governance structure
- Engagement with Sovereign Nations
- Stakeholder engagement
- Framework for plan development

Phase 2: July - Dec 2022

## Compile Information

- ID and gather reports, maps, data, etc.
- Priorities from existing plans
- Produce supporting materials (priority maps, capacity & readiness assessment, etc.)
- Develop goals and targets
- ID steps to achieve goals
- Develop metrics and accountability mechanisms

Phase 3: Jan - Jun 2023

## Draft the Plan

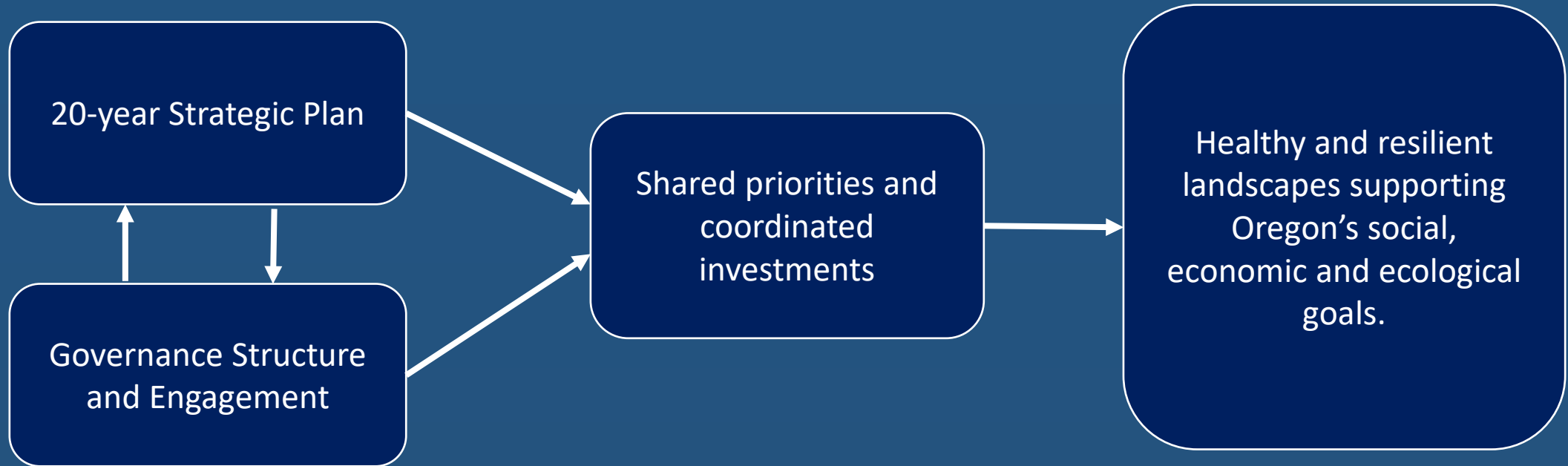
- Draft
- Review
- Finalize and endorse
- Publish

Phase 4: July 2023 →

## Implement the Plan

- Plan roll-out
- S2 conference?
- Governance meetings
- Accountability reviews
- Adaptive management

# Key Components of Shared Stewardship



# Vision and Strategic Elements

## Vision

- *Healthy and resilient landscapes supporting Oregon's social, economic and ecological goals*

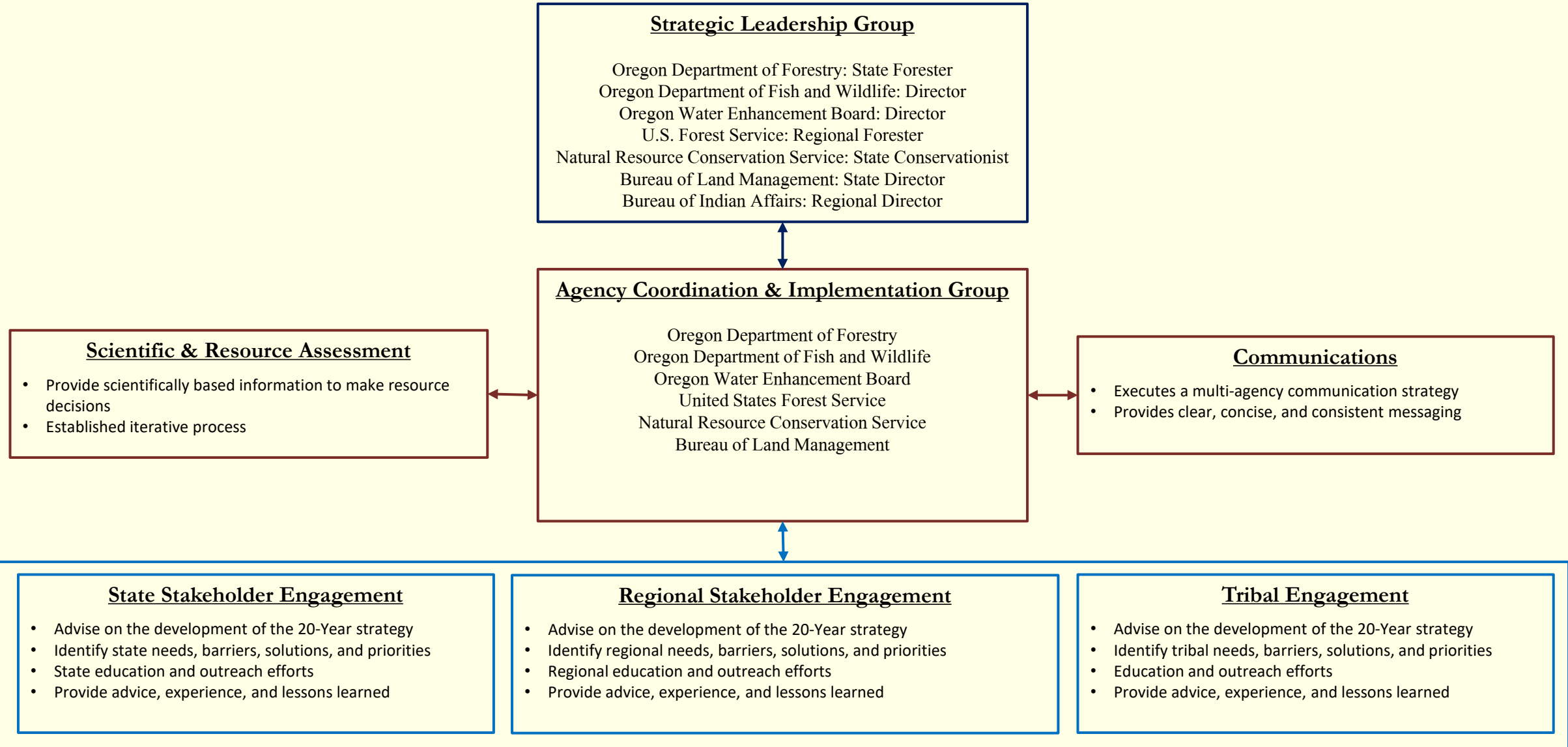
## Strategic Elements

- Reduce wildfire risk to communities
- Enhance resilience in landscapes in the face of climate change
- Create functional aquatic and terrestrial ecosystems
- Support vibrant local economies
- Protect healthy watersheds and water resources
- Provide quality outdoor opportunities for all Oregonians
- Promote equity through the stewardship of landscapes



# Oregon's Shared Stewardship Framework

DRAFT



# Path to Oregon's 20-Year Strategic Plan

Phase 1: → July 2022

Phase 2: July - Dec 2022

Phase 3: Jan - Jun 2023

Phase 4: July 2023 →

## Build the Foundation

- Shared vision
- Governance structure
- Engagement with Sovereign Nations
- Stakeholder engagement
- Framework for plan development

## Compile Information

- ID and gather reports, maps, data, etc.
- Priorities from existing plans
- Produce supporting materials (priority maps, capacity & readiness assessment, etc.)
- Develop goals and targets
- ID steps to achieve goals
- Develop metrics and accountability mechanisms

## Draft the Plan

- Draft
- Review
- Finalize and endorse
- Publish

## Implement the Plan

- Plan roll-out
- S2 conference?
- Governance meetings
- Accountability reviews
- Adaptive management

# Path to Oregon's 20-Year Strategic Plan

Phase 1: Apr → Jul 2022

## Build the Foundation

- Shared vision
- Governance structure
- Engagement with Sovereign Nations
- Stakeholder engagement
- Framework for plan development

Phase 2: July - Dec 2022

## Compile Information

- ID and gather reports, maps, data, etc.
- Priorities from existing plans
- Produce supporting materials (priority maps, capacity & readiness assessment, etc.)
- Develop goals and targets
- ID steps to achieve goals
- Develop metrics and accountability mechanisms

Phase 3: Jan - Jun 2023

## Draft the Plan

- Draft
- Review
- Finalize and endorse
- Publish

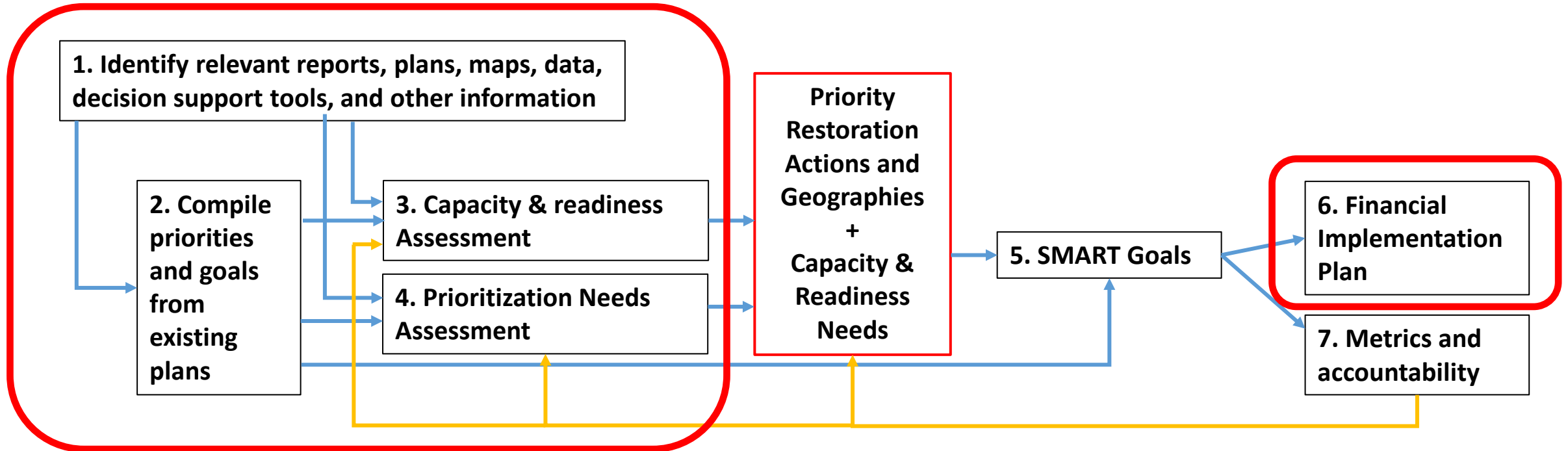
Phase 4: July 2023 →

## Implement the Plan

- Plan roll-out
- S2 conference?
- Governance meetings
- Accountability reviews
- Adaptive management



# Workstreams to Produce 20-Year Strategy



# Capacity & Readiness Assessment

## **Purpose**

- Identify where conditions are in place for near-term implementation
- Identify where conditions are not in place and what the gaps are
- Identify what needs to be done to create the necessary conditions for implementation

## **Considerations (examples)**

- Human
- Legal
- Planning and Implementation
- Infrastructure
- Community/social

# Prioritization

## MOU and SB 762

- Develop a 20-year strategic plan that prioritizes restoration actions and geographies for wildfire risk reduction that can be used to direct federal, state, and private investments in a tangible way.

## MOU

- Help set priority treatment areas using values at risk and scenario planning to focus investments on areas that will yield the greatest return.

# SB 762

In selecting and administering projects, the department shall... identify strategic landscapes that are ready for treatment, giving priority to projects within the landscapes that are:

- (A) On lands in the four highest eNVC risk classes identified in the United States Forest Service report titled “Pacific Northwest Quantitative Wildfire Risk Assessment: Methods and Results” and dated April 9, 2018
- (B) Inclusive of federal lands with treatment projects currently approved under the National Environmental Policy Act (42 U.S.C. 4321 et seq.);
- (C) Focusing on treatments protective of human life, property, critical infrastructure, watershed health and forest or rangeland habitat restoration; and
- (D) Part of a collaborative partnership with agreements across diverse forestland or rangeland stakeholders...

# Prioritization Needs Assessment

- A. Approach to prioritization
- B. Prioritization Criteria

# Prioritization Needs Assessment

- A. Approach to prioritization
- B. Prioritization Criteria
- C. Restoration Needs Assessment (Near-term)
- D. Restoration Needs Assessment Decision-Support (Long-term)
- E. Identifying priorities

# Longer-term Decision Support for Prioritization

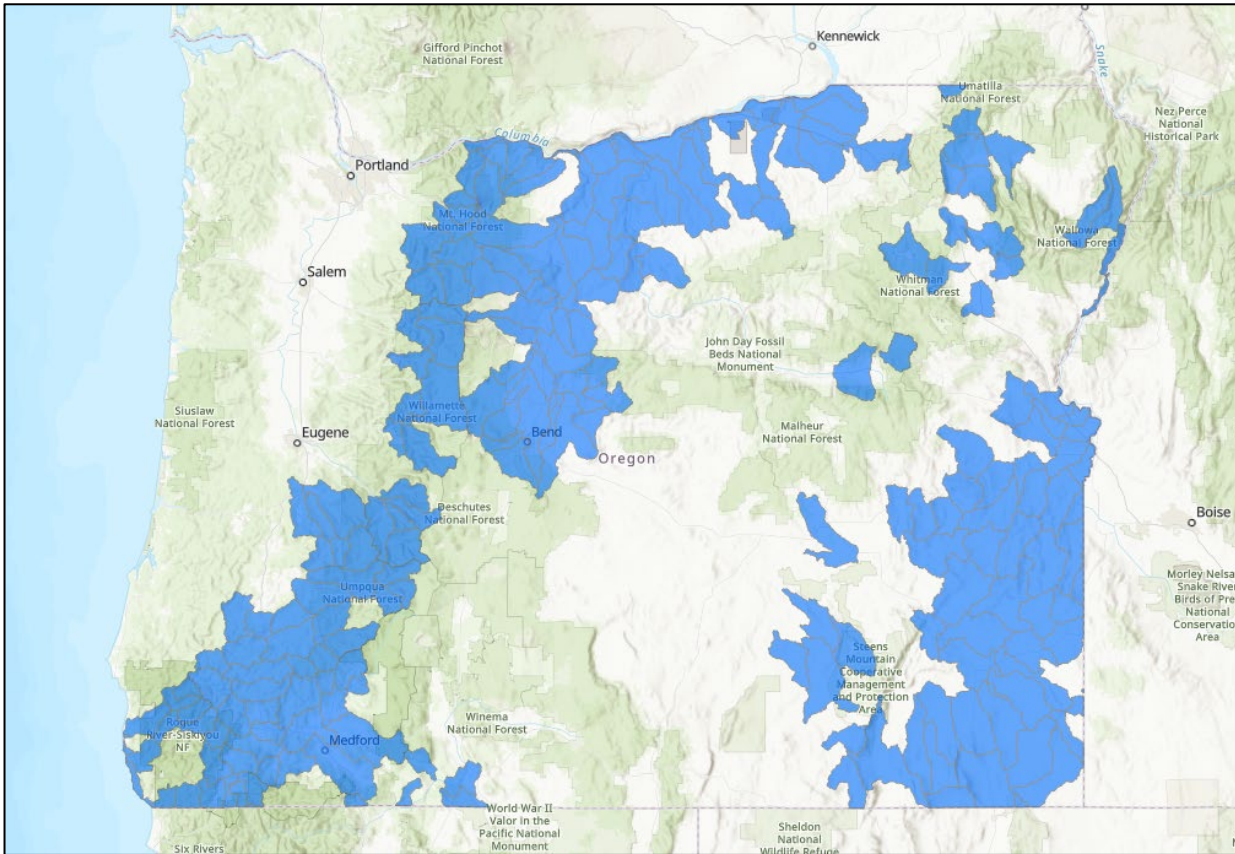
- Initial geographic and action priorities will reflect a snapshot in time
- These may evolve due to:
  - Treatments and restoration work (areas may shift from response to maintenance)
  - Future wildfires
  - New information (e.g., updated QWRA, climate change, etc.)
  - Capacity and readiness changes (e.g., NEPA, partnerships, etc.)
  - Demographic shifts
  - Social values
- Agencies may benefit from a shared platform to track these changes and support decision-making
  - Would build on initial data and maps
  - Could also support dashboard

# Near Term Prioritization Needs Assessment

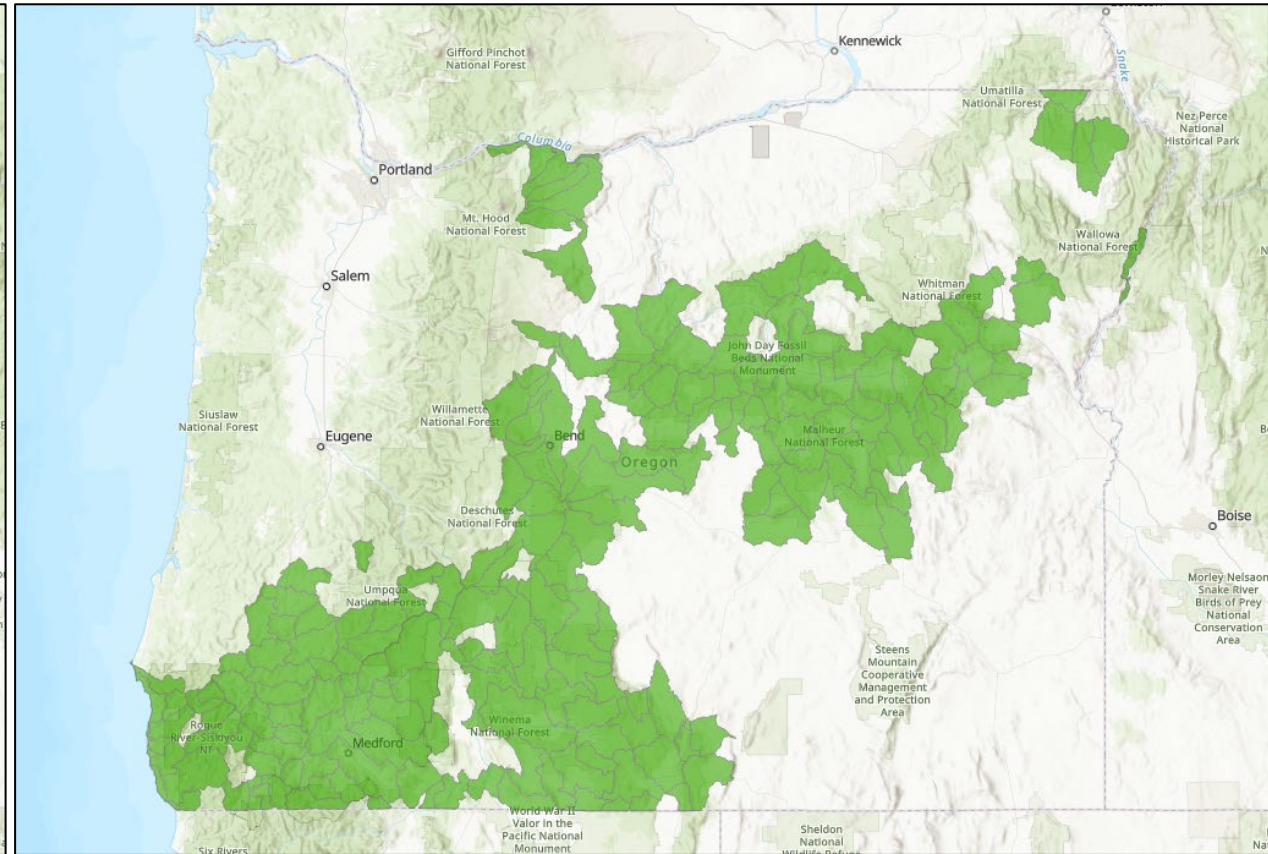
Where are we prioritizing over the next 1-3 years?



# Wildfire Risk & Restoration Need

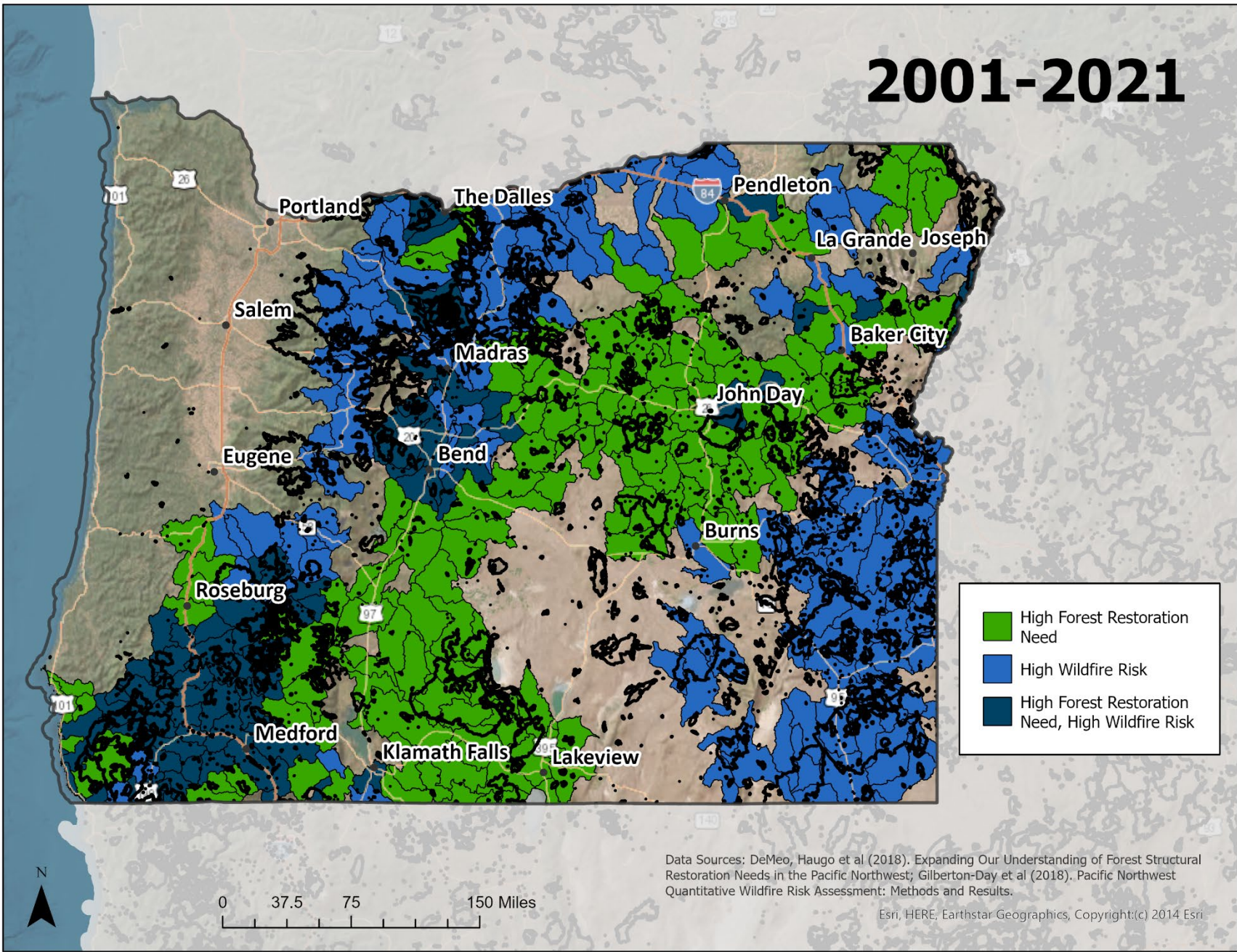


**Wildfire Risk**  
(QWRA Top 4 eNVC classes)



**Forest Disturbance Restoration Need**  
(Expanding Our Understanding of Forest Structural Restoration Needs in the PNW)

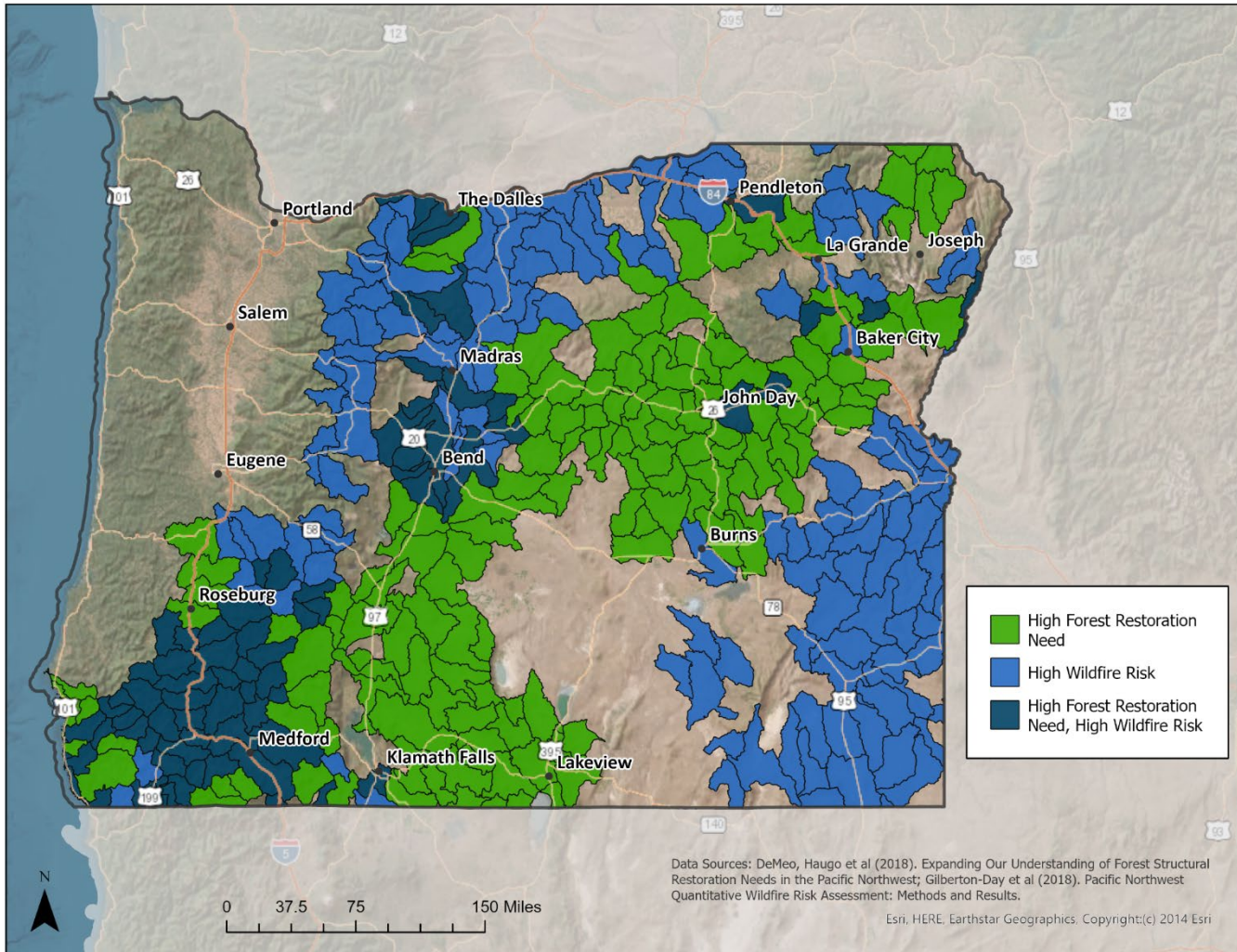
# 2001-2021



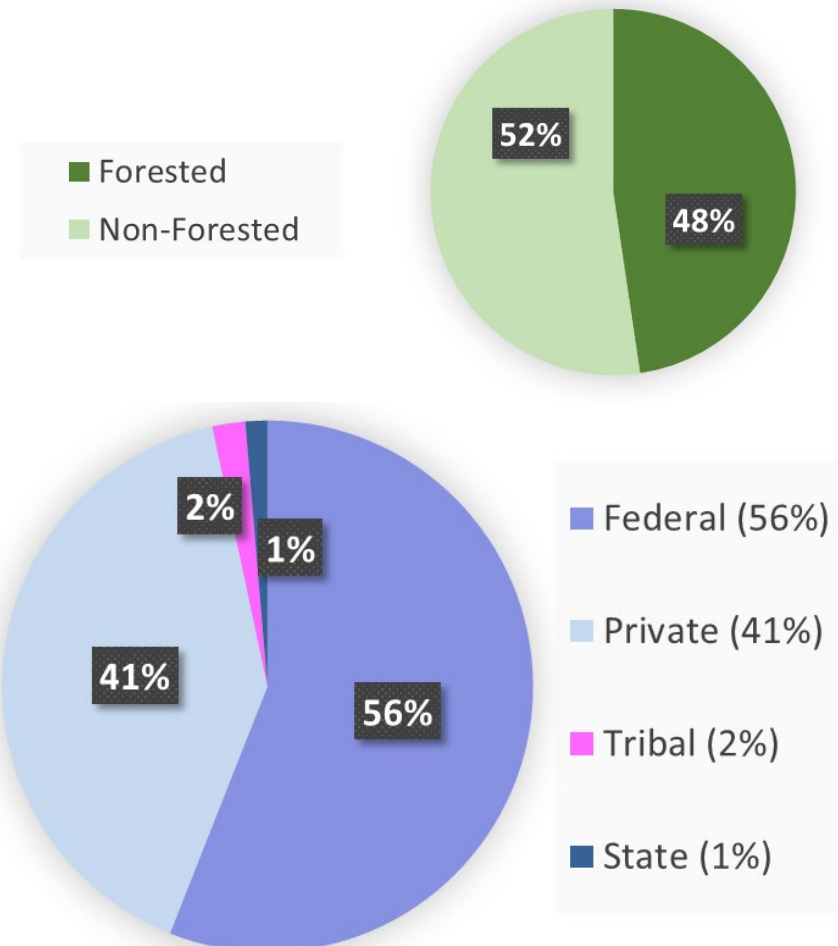
Data Sources: DeMeo, Haugo et al (2018). Expanding Our Understanding of Forest Structural Restoration Needs in the Pacific Northwest; Gilberton-Day et al (2018). Pacific Northwest Quantitative Wildfire Risk Assessment: Methods and Results.

Esri, HERE, Earthstar Geographics, Copyright:(c) 2014 Esri

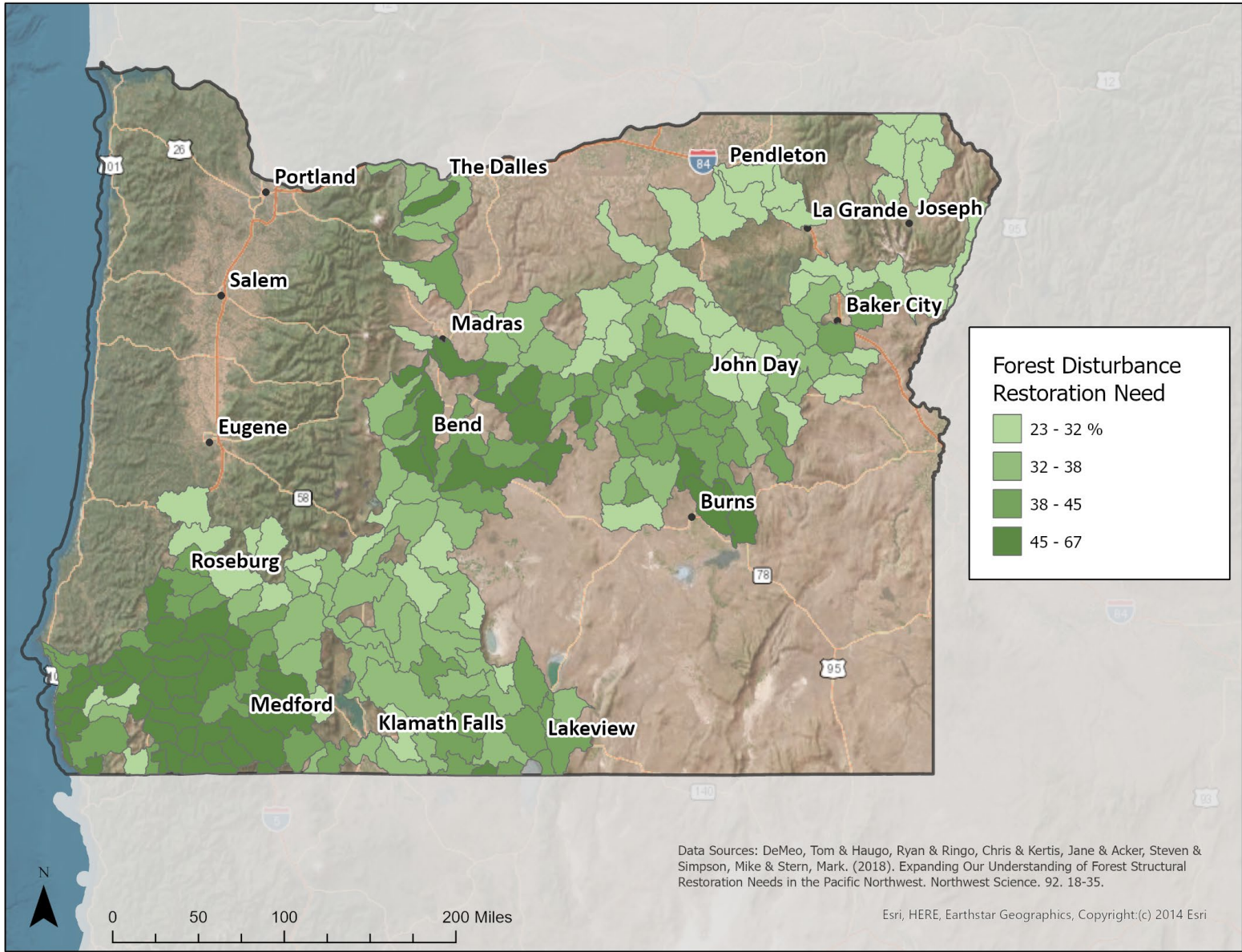
# Wildfire Risk and Forest Restoration Need



58% of Watersheds (37,748,828 Total Acres)



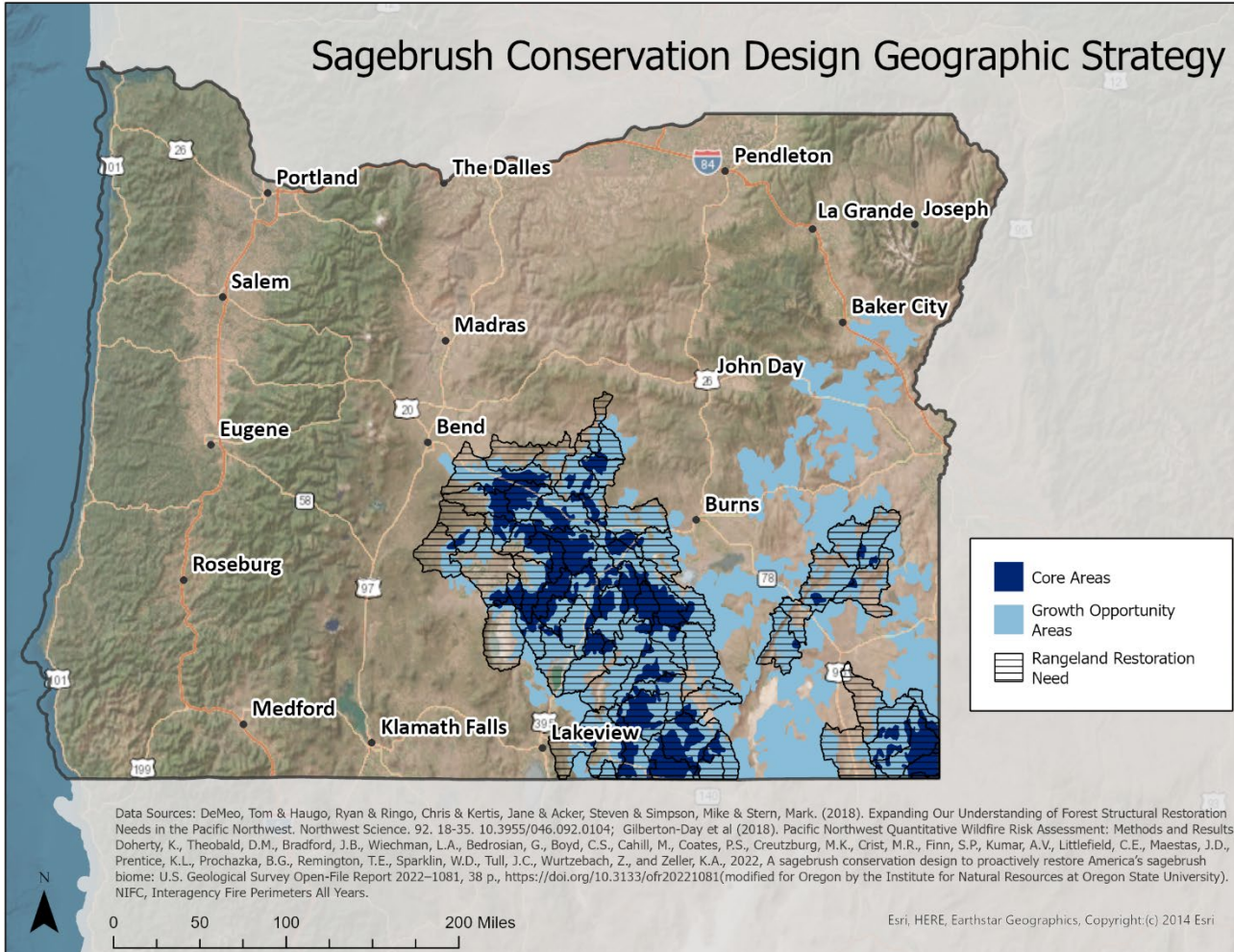
# Forest Restoration Need



Transition Name	Restoration Need Type
Opening/high fire	Disturbance Only
Overstory thinning	Disturbance Only
Thin / low fire	Disturbance Only
Other disturbance + Grow	Disturbance then Succession
Thin / low fire + Grow	Disturbance then Succession
Other disturbance + Grow	Disturbance then Succession
Other disturbance + Grow	Disturbance then Succession
Other disturbance + Grow	Disturbance then Succession
Other disturbance + Grow	Disturbance then Succession
Grow without fire	Succession Only
Grow with fire	Succession Only
Grow without fire	Succession Only
Grow with fire	Succession Only
Grow with fire	Succession Only

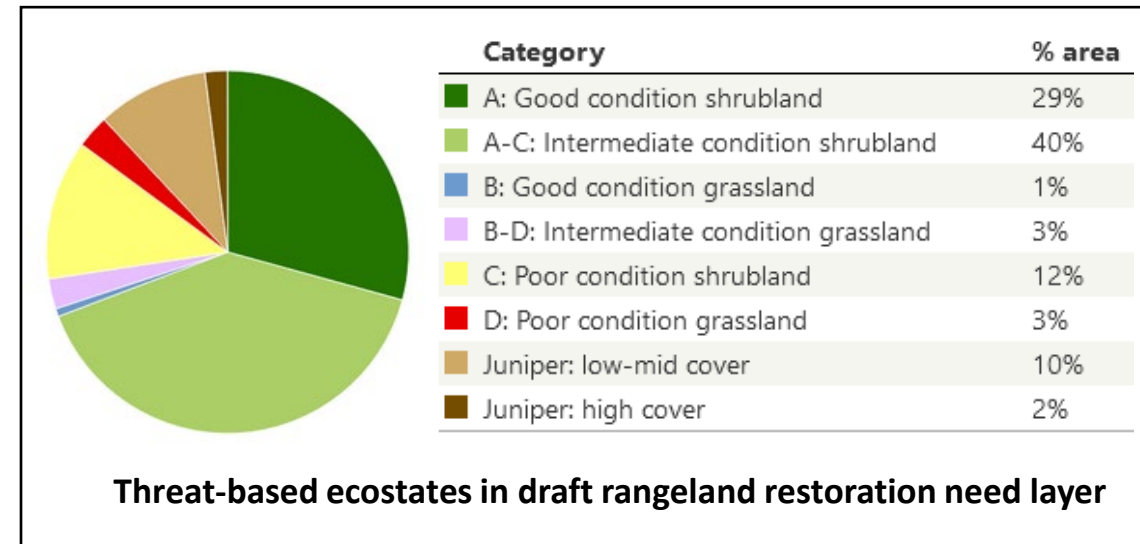
# Rangeland Restoration Need

## Sagebrush Conservation Design Geographic Strategy



“In the Northern Great Basin, a diverse group of partners piloted the use of threat-based state and transition models to fight invasive annual grass invasion, encroaching conifer woodlands, and altered wildfire regimes (Johnson and others, 2019)... This broad strategy focuses on first protecting intact and functioning sagebrush ecosystems (“cores”) and then working outward to improve the management and restoration of more degraded landscapes”

(Doherty, K at al. 2022, A sagebrush conservation design to proactively restore America’s sagebrush biome: U.S. Geological Survey Open-File Report 2022-1081, 38 p., <https://doi.org/10.3133/ofr20221081>)



# Role of the 20-year strategy and how Agencies think about investments

## Options suggested by ACIG members

- Restoration projects (SB762)
- Federal Forest Restoration Program
- GNA
- FIP and other grant programs
- Habitat restoration priorities
- Landscape mitigation opportunities
- 5-year planning process
- Agency restoration projects
- State and private funding opportunities
- Future NEPA areas
- Community assistance programs
- Informing collaborative initiatives
- Agency planning process through county long range plans
- Develop new conservation implementation strategies

**Collectively:** Coordinated actions and investments

# Priority Actions

## Options for Types of Actions

- Build capacity: local groups; tribes; agencies; workforce
- Engage with Tribes, stakeholders and communities to build social license
- Planning (NEPA, Management Plans, etc.)
- On the ground resilience and risk reduction treatments
  - Mechanical
  - Controlled burn
  - Managed fire
  - Maintenance
- Product utilization & mill infrastructure
- Monitoring, data collection, research
- Develop decision support tools and information
- Develop new funding mechanisms
- Different for forest vs range and public vs. private vs. tribal lands?
- How to address equity?

# Path to Oregon's 20-Year Strategic Plan

Phase 1: Apr → Jul 2022

## Build the Foundation

- Shared vision
- Governance structure
- Engagement with Sovereign Nations
- Stakeholder engagement
- Framework for plan development

Phase 2: July - Dec 2022

## Compile Information

- ID and gather reports, maps, data, etc.
- Priorities from existing plans
- Produce supporting materials (priority maps, capacity & readiness assessment, etc.)
- Develop goals and targets
- ID steps to achieve goals
- Develop metrics and accountability mechanisms

Phase 3: Jan - Jun 2023

## Draft the Plan

- Draft
- Review
- Finalize and endorse
- Publish

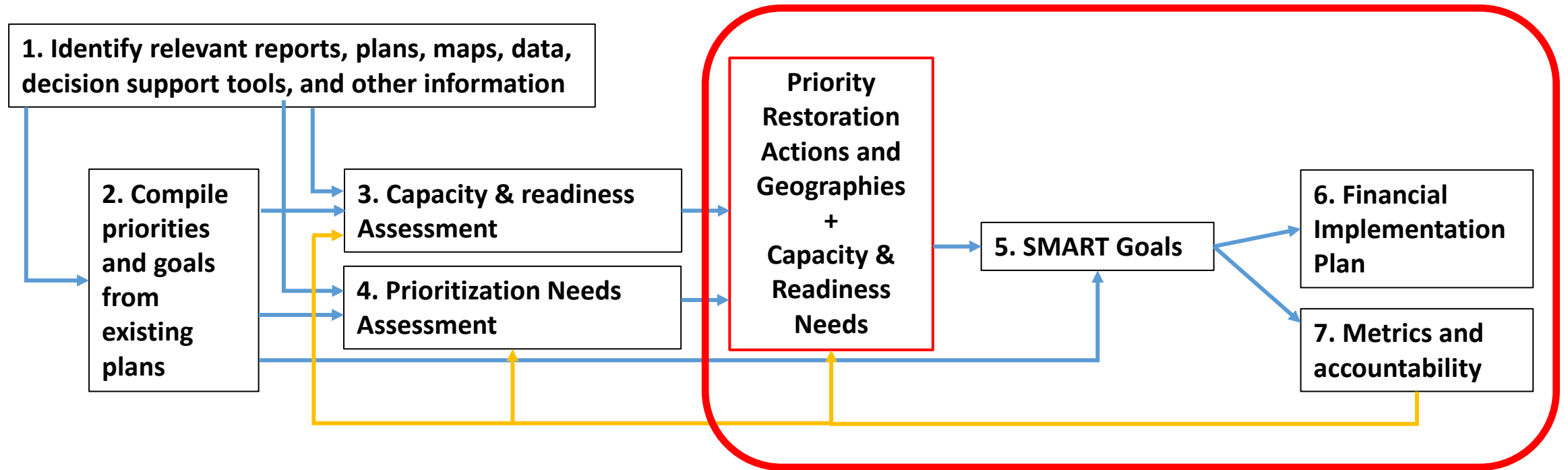
Phase 4: July 2023 →

## Implement the Plan

- Plan roll-out
- S2 conference?
- Governance meetings
- Accountability reviews
- Adaptive management



# Workstreams to Produce 20-Year Strategy



# Financial Implementation Plan

“20-year strategic plan that prioritizes restoration actions and geographies for wildfire risk reduction that can be used to direct federal, state, and private investments in a tangible way”

# Financial Implementation Plan

1. Identify **existing** funding sources, programs, and authorities that can be directed to priority actions and geographies.
2. Identify opportunities for **new** (or expanding existing) funding programs, sources or authorities.
3. Link existing and new funding to priorities, readiness/capacity, and goals.
4. Engage with federal and state partners to integrate shared priorities and goals into funding programs and activities.

# Federal, State, and Private Funding Sources

- Landscape Resiliency Program (LRP)
- Federal Forest Restoration Program (FFR)
- Small Forestland Grant Program (SFG)
- Competitive Grants
  - Western States, Community Assistance, Landscape Scale Restoration (LSR)
- Open Solicitation Grant Programs
- Focused Investment Grant Programs (FIPS)
- Partnership TA Grant Program
- Post Fire Recovery Grant Program
- Community Wildfire Defense Grant (CWDG)
- Collaborative Forest Landscape Restoration Program (CFLRP)
- Tribal Forest Protection Act (TFPA)
- Joint Chiefs Landscape Scale Restoration Projects (Joint Chiefs)
- Regional Conservation Partnership Program (RCPP)
- Environmental Quality Incentives Program (EQIP)
- Great American Outdoors Act
- Conservation Finance

# Timeline for Phase 3: January-June

**Dec. – Mar:** Draft Report

Continue to develop and refine content

**March:** Present key components to Tribes, Stakeholders, SLG

**April:** Review initial draft report with Tribes, Stakeholders, SLG

**May:** Review revised report with Tribes, Stakeholders, SLG

**June:** Final report endorsed by SLG and released  
Begin implementation

## Presentations

**Jan 4:** ODF Board of Forestry

**Jan 25:** OWEB

# Path to Oregon's 20-Year Strategic Plan

Phase 1: Apr → Jul 2022

Phase 2: July - Dec 2022

Phase 3: Jan - Jun 2023

Phase 4: July 2023 →

## Build the Foundation

- Shared vision
- Governance structure
- Engagement with Sovereign Nations
- Stakeholder engagement
- Framework for plan development

## Compile Information

- ID and gather reports, maps, data, etc.
- Priorities from existing plans
- Produce supporting materials (priority maps, capacity & readiness assessment, etc.)
- Develop goals and targets
- ID steps to achieve goals
- Develop metrics and accountability mechanisms

## Draft the Plan

- Draft
- Review
- Finalize and endorse
- Publish

## Implement the Plan

- Plan roll-out
- S2 conference?
- Governance meetings
- Accountability reviews
- Adaptive management

**Thank you!**

Webpage: [Oregon's 20-Year Landscape Resiliency Strategy](#)