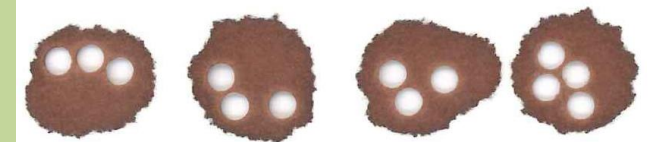
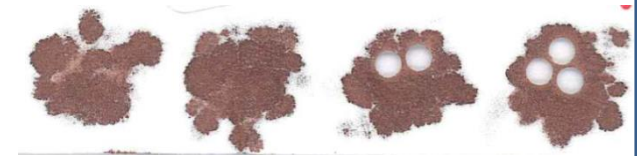
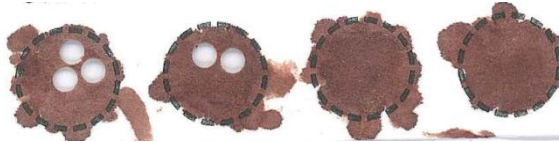


## Newborn Bloodspot Specimen Examples: Front & Back

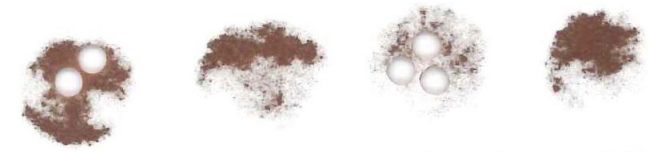
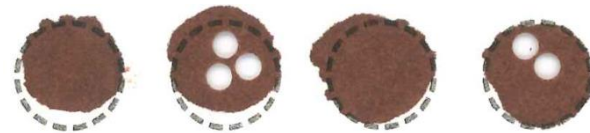
**GOOD Specimen:** OK to go outside the circles



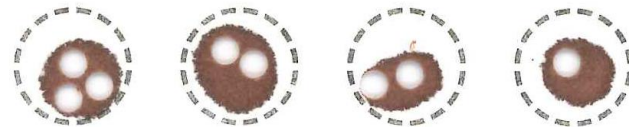
**Layered Specimen:** back shows uneven saturation



**Insufficient Blood:** sample did not saturate to the back of the card



**Borderline:** not enough blood for 2<sup>nd</sup> tier tests



- \*\* Look at the back to assess quality
- \*\* In doubt, recollect while baby is still in-house
- \*\* Every specimen could save a baby's life

12/22/17 V.2

Questions? NBS Follow Up  
503-693-4174  
[NWRegional.nbs@dhsosha.state.or.us](mailto:NWRegional.nbs@dhsosha.state.or.us)