

Oregon Parks and Recreation Commission

June 14, 2023

Agenda Item: 8c **Action**

Public Comment Allowed: Yes

Topic: Mayer State Park Boating Facility Improvements

Presented by: Darrell Monk, Senior Project Manager

Background:

- Staff requests approval for awarding a construction contract exceeding \$750,000. The project consists of improvements to the existing boating facility at Mayer State Park on the Columbia River. The design is currently 95% complete through a grant from the Oregon State Marine Board. In addition to design the grant also includes funding support from multiple agencies (see breakdown below).
- Project work will include the following elements:
 - Removal and disposal of the existing boat ramp, docks, piling and vault toilet.
 - Construct new boat ramp, docks, piling, vault toilet and reconfigure/pave the existing parking lot.
 - Construct stormwater treatment swales and remove 30-derelict wood piling in the slough as mitigation for the proposed improvements.
- Project funding will be supported by grants from both the Oregon State Marine Board (OSMB) and the Oregon Department of Fish & Wildlife (ODFW). The total estimated project cost is \$2,000,000. Here is the cost breakdown for each agency:
 - OPRD FIP Cash Match: \$858,000
 - OSMB Cash Match: \$342,000
 - ODFW Cash Match: \$800,000
- Construction is currently scheduled for November 2023 – March 2024.

Prior Action by Commission: None

Action Requested: Approval

Attachments:

- Attachment A: Preliminary Plans (Existing and Proposed Site Plan)
- Attachment B: Existing Photos

Prepared by: Darrell Monk, Senior Project Manager

Attachment A Preliminary Plans (Existing and Proposed Site Plan)

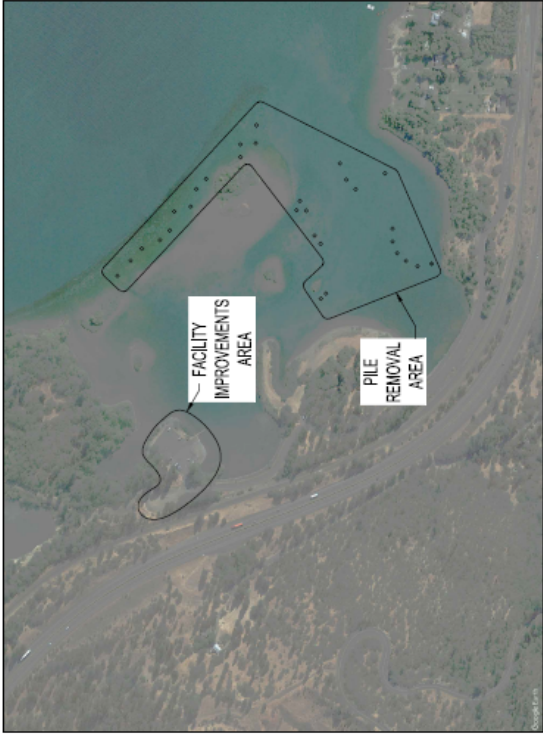


PROJECT NUMBER: 01
 SHEET NUMBER: 01
 DATE: 01/11/24

FINAL
 AS ADVERTISED

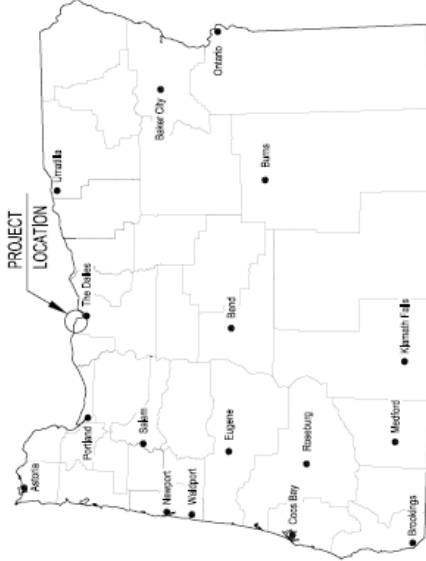


PROJECT LOCATION: MAYER STATE PARK, COLUMBIA RIVER - MILE 181.1 (LAKE BONNEVILLE)
 PROJECT NUMBER: 01
 SHEET NUMBER: 01



ABBREVIATIONS	
ALUM-ALUMINUM	HIT-HIGHEST MEASURED TIE
BTM-BOTTOM	HORD-HORIZONTAL
BVC-BEGINNING OF VERTICAL CURVE	HOT-HORIZONTAL
CH-CAST-IN-PLACE	HT-HEIGHT
CONC-CONCRETE	LA-LEFT HAND
DBT-DEPTH	LA-LEFT HAND
E-EAST	LW-LOCK WASHER
ELEV-ELEVATION	MM-MAXIMUM
EQ-EXISTING	MIN-MINIMUM
FIN-FINISH GRADE	MIN-MINIMUM
FRT-FLAT WASHER	N-NORTH
GALV-GALVANIZED	N-NORTH
GPS-GLOBAL POSITIONING SYSTEM	NOT-NOT TO SCALE
	O/C-ON CENTER
	O-D-OUTSIDE DIAMETER
	PIC-PRECAST CONCRETE PLANK(S)
	PL-PLATE
	PLUG-PLUG
	REIN-REINFORCED
	RT-RIGHT HAND
	SPEC-SPECIFICATIONS
	SS-STEEL
	T.O-TOP OF
	TOP-TO
	VZ-VERTICAL CURVE
	VERT-VERTICAL

GEOGRAPHIC LOCATION	
TOWNSHIP	02 NORTH
RANGE	12 EAST
SECTION	02
TAX LOT	200
COUNTY	WASCO
TOWNSHIP	02 NORTH
RANGE	12 EAST
SECTION	02
USGS QUAD MAP	LYE



LOCATION MAP
NO SCALE

DRAWING INDEX

01	TITLE SHEET
02	EXISTING SITE PLAN
03	EROSION & SEDIMENT CONTROL PLAN
04	EROSION & SEDIMENT CONTROL DETAILS
05	FACILITY DEMOLITION PLAN
06	PILE DEMOLITION PLAN
07	PROPOSED SITE PLAN
08	LAUNCH RAMP CROSS SECTIONS
09	LAUNCH RAMP LAYOUT PLAN & POINT TABLES
10	REPAIR LAYOUT PLAN & POINT TABLES
11	LAUNCH RAMP LAYOUT PLAN
12	LAUNCH RAMP LAYOUT DETAILS
13	PRECAST RAIL SYSTEM DETAILS
14	RAIL SYSTEM CONNECTION DETAILS
15	24" PRECAST CONCRETE PLANK DETAILS (L, H, GROOVE)
16	26" PRECAST CONCRETE PLANK DETAILS (L, H, GROOVE)
17	CONCRETE ABUTMENT PLAN & PROFILE
18	BOARDING DOCK LAYOUT PLAN
19	ALUMINUM BOARDING DOCK - TYPE "A"
20	ALUMINUM BOARDING DOCK - TYPE "B"
21	DOCK HINGE DETAILS
22	DOCK ABUTMENT TRANSITION PLATE
23	PARKING & WATERSIDE EARTHWORK PLAN
24	PARKING & WATERSIDE EARTHWORK DETAILS
25	PARKING LOT CROSS SECTIONS
26	PARKING LOT LAYOUT & GRADING PLAN
27	PAVEMENT & DRAINAGE DETAILS
28	STORMWATER BASIN LAYOUT & DETAILS
29	SIGN & STRIPING DETAILS
30	SIGN & STRIPING DETAILS
31	KIOSK ROOFING DETAILS
32	KIOSK ROOFING DETAILS

BOATING FACILITY IMPROVEMENTS MAYER STATE PARK, COLUMBIA RIVER - MILE 181.1 (LAKE BONNEVILLE) OREGON PARKS & RECREATION DEPARTMENT

**Attachment B
Existing Photos**



Figure 1 - Parking lot reconfiguration will eliminate parking and launching in riparian areas



Figure 2 – Parking lot reconfiguration will reduce parking in landscaped areas



Figure 3 – Dock framework is rotted and in poor condition

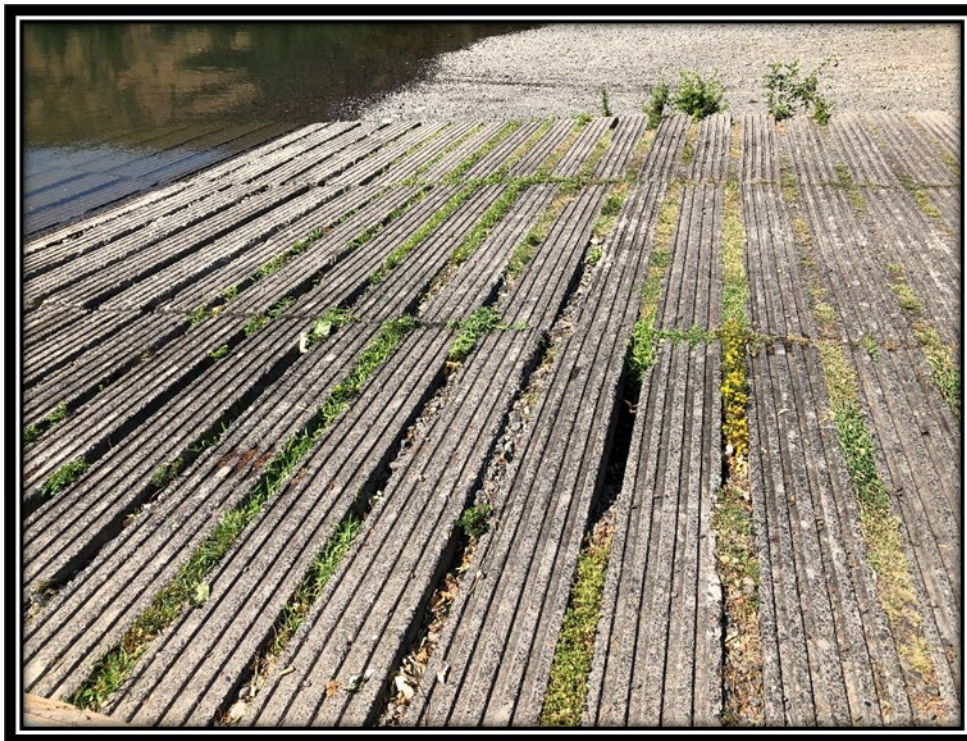


Figure 4 – Boat ramp is constructed using concrete skip planking and has exceeded its useful life



Figure 5 – Concrete planks are becoming disconnected creating hazards for watercraft launch and retrieval



Figure 6 – Graffiti



Figure 7 - Graffiti