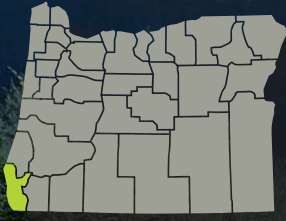


# Investments in Curry County



**Oregon Watershed Enhancement Board (OWEB) mission:**  
*To help protect and restore healthy watersheds and natural habitats that support thriving communities and strong economies.*



Since 1999, OWEB has awarded nearly **\$10.9 million in grants in Curry County.**

## County Accomplishments

Restoration and improvements accomplished:



**87** instream and riparian habitat miles treated  
*6,807 statewide*



**35** miles of fish passage made accessible  
*7,224 statewide*



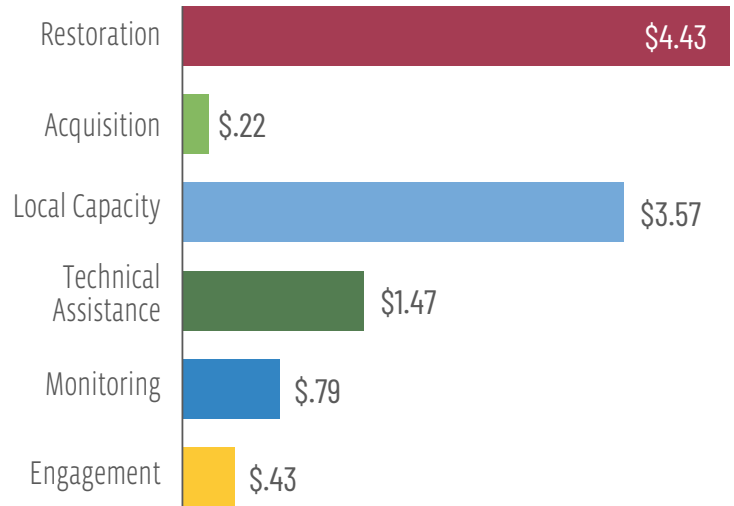
**1,285** upland habitat acres improved  
*1,469,606 statewide*



**21** wetland or estuarine habitat acres created or restored  
*61,500 statewide*

## County Grant Awards by Project Type

(All Fund Sources Statewide, 1999-2023: **\$837.4 million**)  
*Numbers below are in millions of dollars:*



## Local Economies and Communities Benefit

OWEB funds are used to pay those who design and implement projects, hire field crews, and buy goods and services they need to get the job done.



**= 15 - 24 local jobs**

According to a University of Oregon study, every \$1 million of OWEB investments creates 15-24 jobs in local communities across Oregon.



**90¢ of each \$1 supports local economies**

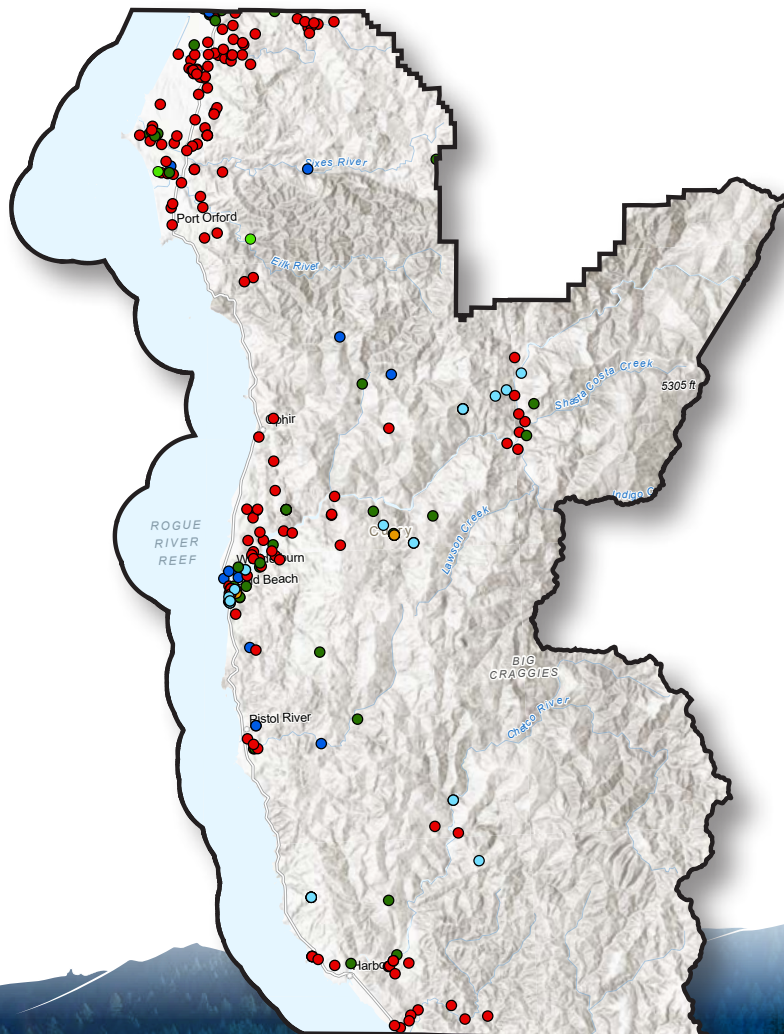
On average, more than 90¢ of every OWEB grant dollar supports local businesses, services, and suppliers within Oregon.

## About OWEB

The Oregon Watershed Enhancement Board cares about and invests in the long-term health of Oregon's watersheds, both on the land and in the water that flows through it. Together with local partners across the state of Oregon, we invest funds from Lottery, General Fund, federal Pacific Coastal Salmon Recovery Fund, Salmon License Plates, and other sources in local communities. These funds help protect and restore healthy watersheds and natural habitats that support thriving communities and strong economies. Through all of our work, we are dedicated to the belief that:

- Healthy watersheds sustain healthy communities.
- Every Oregonian plays a role in the health of our watersheds.
- It takes broad partnership to support resilient watersheds.
- Improving our watersheds requires taking the long view.

## Projects in Curry County by Type, 1999–2023



### Curry County

#### OWEB Grant Project Types

- Restoration
- Acquisitions
- Local Capacity
- Technical Assistance
- Monitoring
- Engagement

Map: Esri, NASA, NGA, USGS, Oregon Metro, Oregon State Parks, State of Oregon GEO, Esri, HERE, Garmin, SafeGraph, FAO, METI/NASA, USGS, Bureau of Land Management, EPA, NPS

## Contact

Eric Hartstein, Senior Policy Coordinator  
503-910-6201, [eric.hartstein@oweb.oregon.gov](mailto:eric.hartstein@oweb.oregon.gov)  
775 Summer Street NE #360, Salem OR 97301, 503-986-0178

[www.oregon.gov/oweb](http://www.oregon.gov/oweb)

