

Investments in Washington County



Oregon Watershed Enhancement Board (OWEB) mission:
To help protect and restore healthy watersheds and natural habitats that support thriving communities and strong economies.



Since 1999, OWEB has awarded nearly **\$6.23 million in grants Washington County.**

County Accomplishments

Restoration and improvements accomplished:



92 instream and riparian habitat miles treated
6,807 statewide



21 miles of fish passage made accessible
7,224 statewide



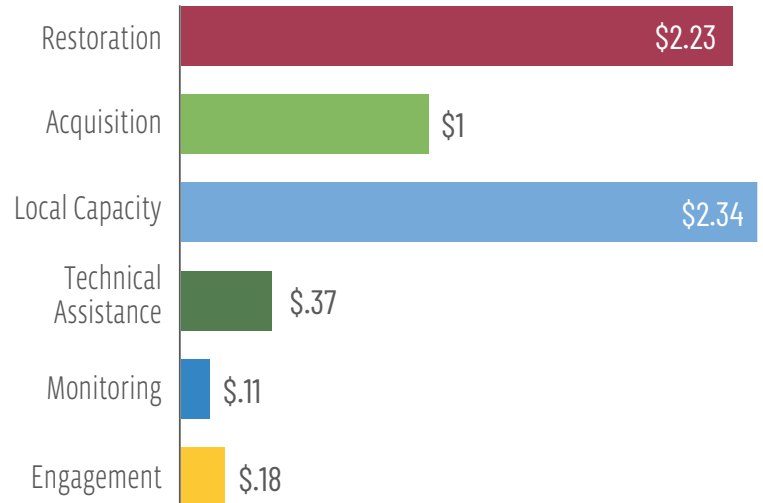
331 upland habitat acres improved
1,469,606 statewide



713 wetland or estuarine habitat acres created or restored
61,500 statewide

County Grant Awards by Project Type

(All Fund Sources Statewide, 1999-2023: **\$837.4 million**)
Numbers below are in millions of dollars:



Local Economies and Communities Benefit

OWEB funds are used to pay those who design and implement projects, hire field crews, and buy goods and services they need to get the job done.



= 15 - 24 local jobs

According to a University of Oregon study, every \$1 million of OWEB investments creates 15-24 jobs in local communities across Oregon.



90¢ of each \$1 supports local economies

On average, more than 90¢ of every OWEB grant dollar supports local businesses, services, and suppliers within Oregon.

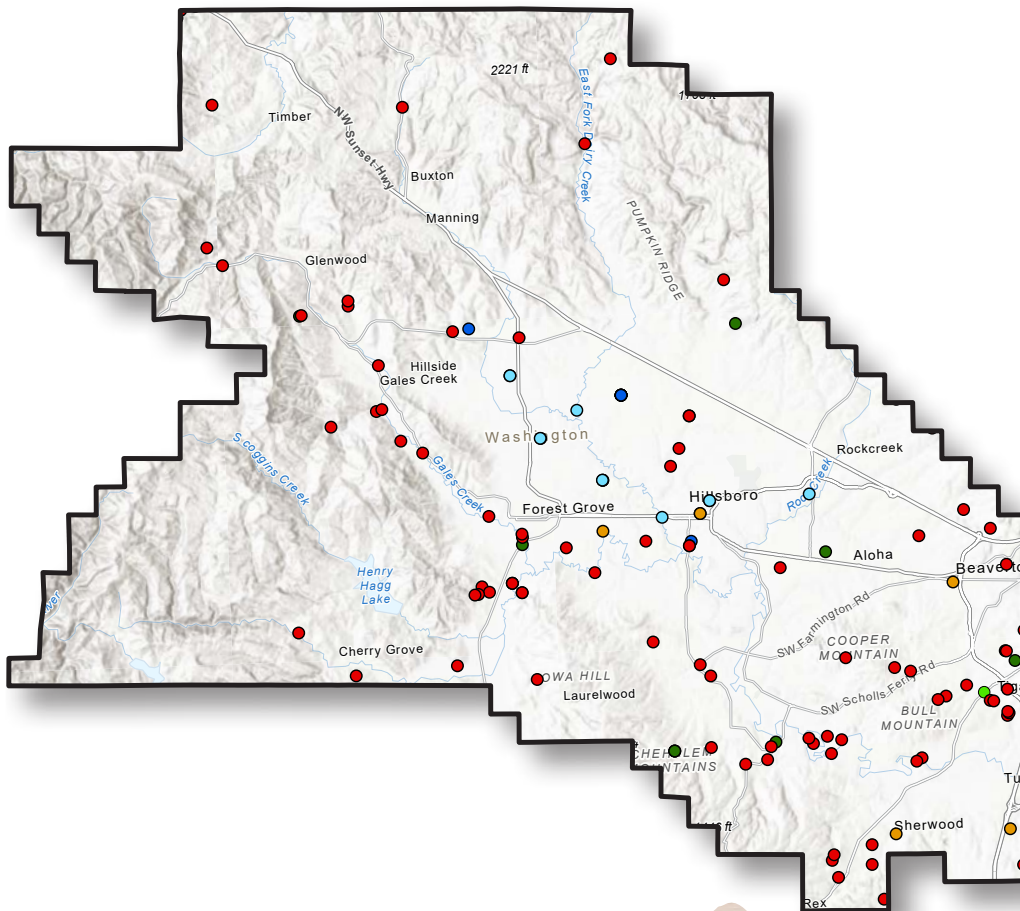
Numbers generated for this fact sheet are based on the best data available as of 12/31/2023 from the Oregon Watershed Restoration Inventory and OWEB's Grant Management System. "Local Capacity" includes Council Capacity and Soil & Water Conservation District grants.

About OWEB

The Oregon Watershed Enhancement Board cares about and invests in the long-term health of Oregon's watersheds, both on the land and in the water that flows through it. Together with local partners across the state of Oregon, we invest funds from Lottery, General Fund, federal Pacific Coastal Salmon Recovery Fund, Salmon License Plates, and other sources in local communities. These funds help protect and restore healthy watersheds and natural habitats that support thriving communities and strong economies. Through all of our work, we are dedicated to the belief that:

- Healthy watersheds sustain healthy communities.
- Every Oregonian plays a role in the health of our watersheds.
- It takes broad partnership to support resilient watersheds.
- Improving our watersheds requires taking the long view.

Projects in Washington County by Type, 1999–2023



Washington County OWEB Grant Project Types

- Restoration
- Acquisitions
- Local Capacity
- Technical Assistance
- Monitoring
- Engagement

Map: Esri, NASA, NGA, USGS, Oregon Metro, Oregon State Parks, State of Oregon GEO, Esri, HERE, Garmin, SafeGraph, FAO, METI/NASA, USGS, Bureau of Land Management, EPA, NPS

Contact

Eric Hartstein, Senior Policy Coordinator
503-910-6201, eric.hartstein@oweb.oregon.gov
775 Summer Street NE #360, Salem OR 97301, 503-986-0178

www.oregon.gov/oweb

