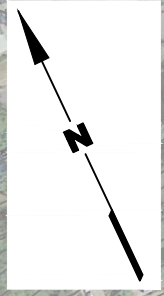
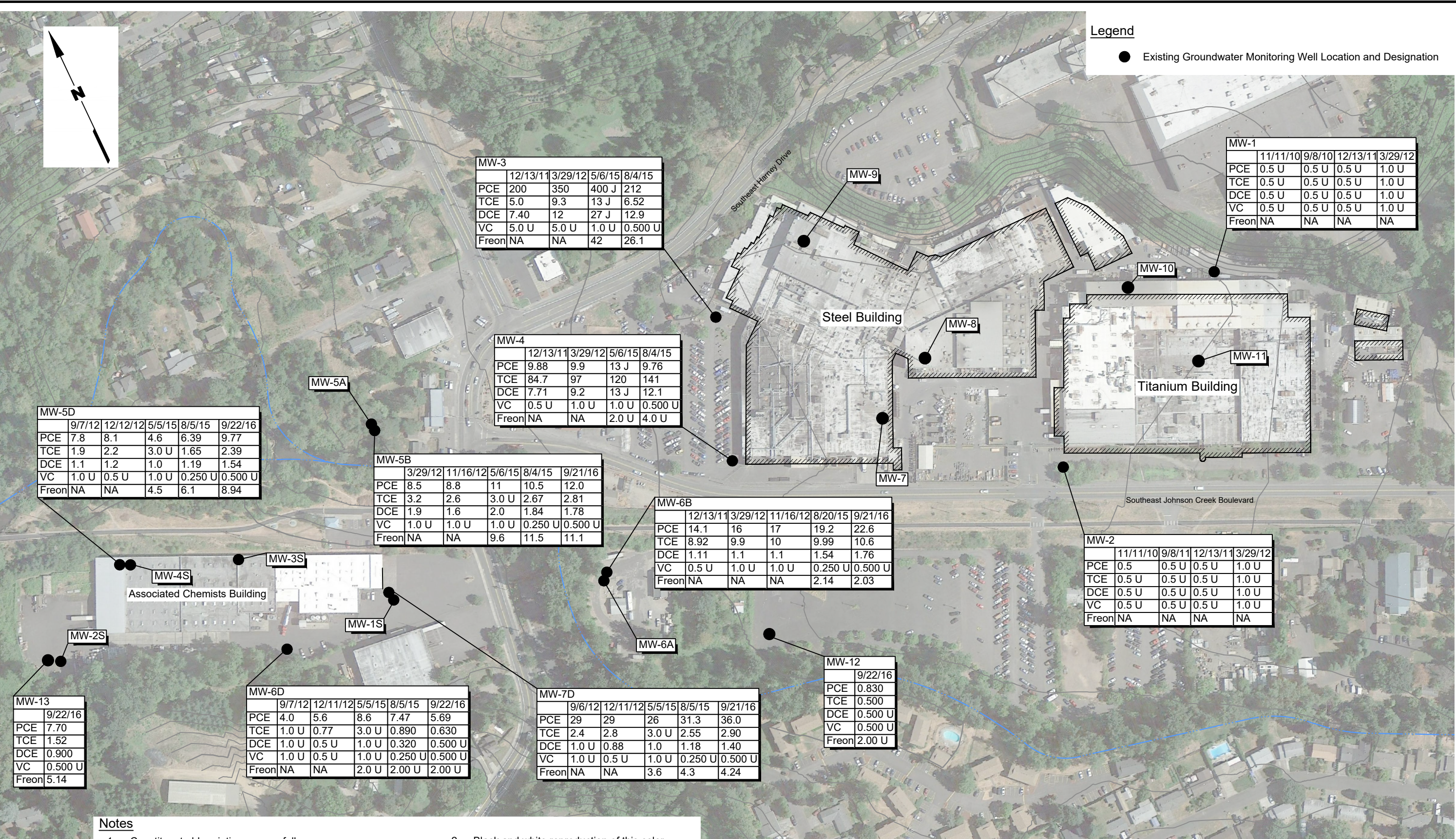


I:\Projects\883\002\04\03\2016 October\F05 Groundwater Monitoring Results.dwg (A) "Figure 5" 10/21/2016



Legend

● Existing Groundwater Monitoring Well Location and Designation



MW-3	12/13/11	3/29/12	5/6/15	8/4/15
PCE	200	350	400 J	212
TCE	5.0	9.3	13 J	6.52
DCE	7.40	12	27 J	12.9
VC	5.0 U	5.0 U	1.0 U	0.500 U
Freon	NA	NA	42	26.1

MW-4	12/13/11	3/29/12	5/6/15	8/4/15
PCE	9.88	9.9	13 J	9.76
TCE	84.7	97	120	141
DCE	7.71	9.2	13 J	12.1
VC	0.5 U	1.0 U	1.0 U	0.500 U
Freon	NA	NA	2.0 U	4.0 U

MW-5B	3/29/12	11/16/12	5/6/15	8/4/15	9/21/16
PCE	8.5	8.8	11	10.5	12.0
TCE	3.2	2.6	3.0 U	2.67	2.81
DCE	1.9	1.6	2.0	1.84	1.78
VC	1.0 U	1.0 U	1.0 U	0.250 U	0.500 U
Freon	NA	NA	9.6	11.5	11.1

MW-6B	12/13/11	3/29/12	11/16/12	8/20/15	9/21/16
PCE	14.1	16	17	19.2	22.6
TCE	8.92	9.9	10	9.99	10.6
DCE	1.11	1.1	1.1	1.54	1.76
VC	0.5 U	1.0 U	1.0 U	0.250 U	0.500 U
Freon	NA	NA	NA	2.14	2.03

MW-2	11/11/10	9/8/11	12/13/11	3/29/12
PCE	0.5	0.5 U	0.5 U	1.0 U
TCE	0.5 U	0.5 U	0.5 U	1.0 U
DCE	0.5 U	0.5 U	0.5 U	1.0 U
VC	0.5 U	0.5 U	0.5 U	1.0 U
Freon	NA	NA	NA	NA

MW-5D	9/7/12	12/12/12	5/5/15	8/5/15	9/22/16
PCE	7.8	8.1	4.6	6.39	9.77
TCE	1.9	2.2	3.0 U	1.65	2.39
DCE	1.1	1.2	1.0	1.19	1.54
VC	1.0 U	0.5 U	1.0 U	0.250 U	0.500 U
Freon	NA	NA	4.5	6.1	8.94

MW-6D	9/7/12	12/11/12	5/5/15	8/5/15	9/22/16
PCE	4.0	5.6	8.6	7.47	5.69
TCE	1.0 U	0.77	3.0 U	0.890	0.630
DCE	1.0 U	0.5 U	1.0 U	0.320	0.500 U
VC	1.0 U	0.5 U	1.0 U	0.250 U	0.500 U
Freon	NA	NA	2.0 U	2.00 U	2.00 U

MW-7D	9/6/12	12/11/12	5/5/15	8/5/15	9/21/16
PCE	29	29	26	31.3	36.0
TCE	2.4	2.8	3.0 U	2.55	2.90
DCE	1.0 U	0.88	1.0	1.18	1.40
VC	1.0 U	0.5 U	1.0 U	0.250 U	0.500 U
Freon	NA	NA	3.6	4.3	4.24

MW-13	9/22/16
PCE	7.70
TCE	1.52
DCE	0.900
VC	0.500 U
Freon	5.14

MW-12	9/22/16
PCE	0.830
TCE	0.500
DCE	0.500 U
VC	0.500 U
Freon	2.00 U

Notes

- Constituent abbreviations are as follows:
 PCE - Tetrachloroethene DCE - cis-1,2-Dichloroethene
 TCE - Trichloroethene VC - Vinyl Chloride
 Freon- 1,1,2-Trichloro-1,2,2-trifluoroethane
 ND - Nondetect NS - Not Sampled
 NA - Not Analyzed U - Compound undetected at the reporting concentration
- Black and white reproduction of this color original may reduce its effectiveness and lead to incorrect interpretation.
- All results are posted in µg/L.



Base map source: Aerial Photo Provided by Google 2012, Base Drawing from PCC 1989, USGS NED DEM 2009



PCC Structurals, Inc.
Large Parts Campus
Portland, Oregon

**Groundwater
Monitoring Results
30-65 FT**

Figure
5