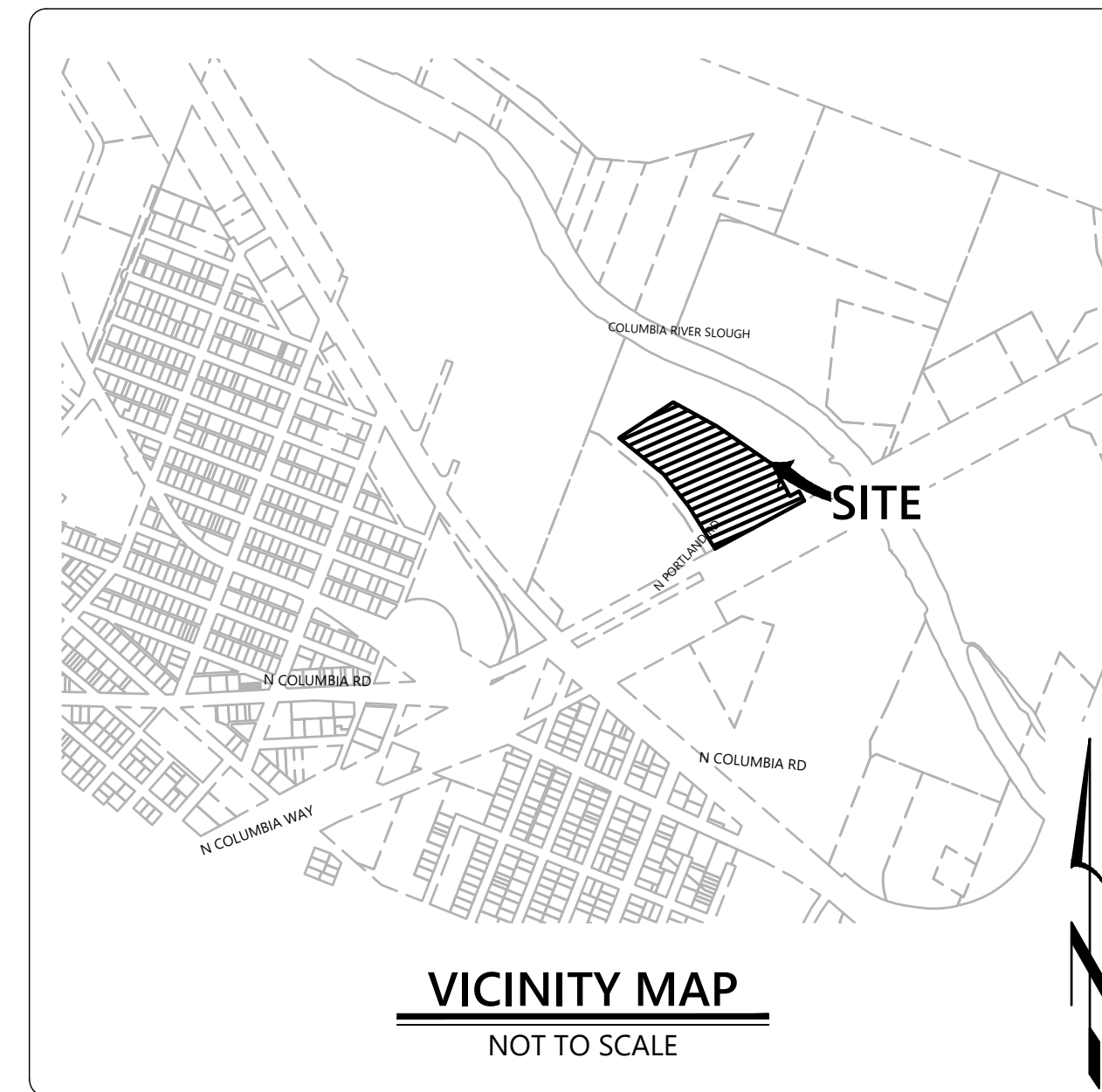
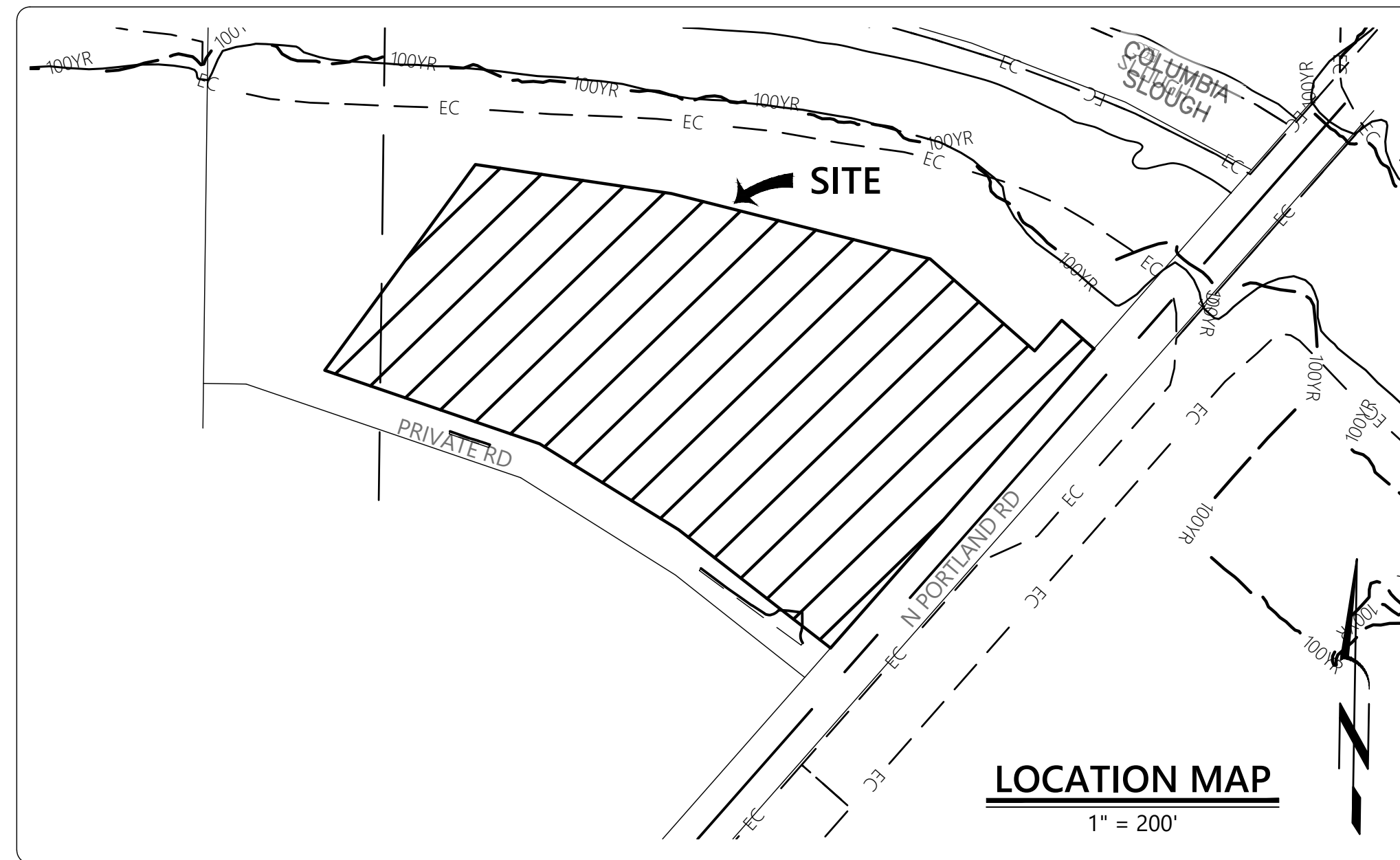


# WEST PROPERTY TASS 2 - 1200-CA

## EROSION AND SEDIMENT CONTROL NOTES:

- INCLUDE A LIST OF ALL PERSONNEL (BY NAME AND POSITION) THAT ARE RESPONSIBLE FOR THE DESIGN, INSTALLATION AND MAINTENANCE OF STORMWATER CONTROL MEASURES (E.G. ESCP DEVELOPER, BMP INSTALLER (SEE SECTION 4.10), AS WELL AS THEIR INDIVIDUAL RESPONSIBILITIES. (SECTION 4.4.C.II)
- VISUAL MONITORING INSPECTION REPORTS MUST BE MADE IN ACCORDANCE WITH DEQ 1200-CA PERMIT REQUIREMENTS. (SECTION 6.5)
- INSPECTION LOGS MUST BE KEPT IN ACCORDANCE WITH DEQ'S 1200-CA PERMIT REQUIREMENTS. (SECTION 6.5Q)
- RETAIN A COPY OF THE ESCP AND ALL REVISIONS ON SITE AND MAKE IT AVAILABLE ON REQUEST TO DEQ, AGENT, OR THE LOCAL MUNICIPALITY. (SECTION 4.7)
- THE PERMIT REGISTRANT MUST IMPLEMENT THE ESCP. FAILURE TO IMPLEMENT ANY OF THE CONTROL MEASURES OR PRACTICES DESCRIBED IN THE ESCP IS A VIOLATION OF THE PERMIT (SECTIONS 4 AND 4.11)
- THE ESCP MUST BE ACCURATE AND REFLECT SITE CONDITIONS. (SECTION 4.8)
- SUBMISSION OF ALL ESCP REVISIONS IS NOT REQUIRED. SUBMITTAL OF THE ESCP REVISIONS IS ONLY UNDER SPECIFIC CONDITIONS. SUBMIT ALL NECESSARY REVISION TO DEQ OR AGENT WITHIN 10 DAYS. (SECTION 4.9)
- SEQUENCE CLEARING AND GRADING TO THE MAXIMUM EXTENT PRACTICAL TO PREVENT EXPOSED INACTIVE AREAS FROM BECOMING A SOURCE OF EROSION. (SECTION 2.2.2)
- CREATE SMOOTH SURFACES BETWEEN SOIL SURFACE AND EROSION AND SEDIMENT CONTROLS TO PREVENT STORMWATER FROM BYPASSING CONTROLS AND PONDING. (SECTION 2.2.3)
- IDENTIFY, MARK, AND PROTECT (BY CONSTRUCTION FENCING OR OTHER MEANS) CRITICAL RIPARIAN AREAS AND VEGETATION INCLUDING IMPORTANT TREES AND ASSOCIATED ROOTING ZONES, AND VEGETATION AREAS TO BE PRESERVED. IDENTIFY VEGETATIVE BUFFER ZONES BETWEEN THE SITE AND SENSITIVE AREAS (E.G. WETLANDS), AND OTHER AREAS TO BE PRESERVED, ESPECIALLY IN PERIMETER AREAS. (SECTION 2.2.1)
- PRESERVE EXISTING VEGETATION WHEN PRACTICAL AND RE-VEGETATE OPEN AREAS. RE-VEGETATE OPEN AREAS WHEN PRACTICABLE BEFORE AND AFTER GRADING OR CONSTRUCTION. IDENTIFY THE TYPE OF VEGETATIVE SEED MIX USED. (SECTION 2.2.5)
- MAINTAIN AND DELINEATE ANY EXISTING NATURAL BUFFER WITHIN THE 50-FOOT OF WATERS OF THE STATE. (SECTION 2.2.4)
- INSTALL PERIMETER SEDIMENT CONTROL, INCLUDING STORM DRAIN INLET PROTECTION AS WELL AS ALL SEDIMENT BASINS, TRAPS, AND BARRIERS PRIOR TO LAND DISTURBANCE. (SECTIONS 2.1.3)
- CONTROL BOTH PEAK FLOW RATES AND TOTAL STORMWATER VOLUME, TO MINIMIZE EROSION AT OUTLETS AND DOWNSTREAM CHANNELS AND STREAMBANKS. (SECTION 2.1.1 AND 2.2.16)
- CONTROL SEDIMENT AS NEEDED ALONG THE SITE PERIMETER AND AT ALL OPERATIONAL INTERNAL STORM DRAIN INLETS AT ALL TIMES DURING CONSTRUCTION, BOTH INTERNALLY AND AT THE SITE BOUNDARY. (SECTIONS 2.2.6 AND 2.2.13)
- ESTABLISH CONCRETE TRUCK AND OTHER CONCRETE EQUIPMENT WASHOUT AREAS BEFORE BEGINNING CONCRETE WORK. (SECTION 2.2.14)
- APPLY TEMPORARY AND/OR PERMANENT SOIL STABILIZATION MEASURES IMMEDIATELY ON ALL DISTURBED AREAS AS GRADING PROGRESSES. TEMPORARY OR PERMANENT SOIL STABILIZATION MEASURES IMMEDIATELY ON ALL DISTURBED AREAS AS GRADING PROGRESSES. TEMPORARY OR PERMANENT STABILIZATION MEASURES ARE NOT REQUIRED FOR AREAS THAT ARE INTENDED TO BE LEFT UNVEGETATED, SUCH AS DIRT ACCESS ROADS OR UTILITY POLE PADS. (SECTIONS 2.2.20 AND 2.2.21)
- ESTABLISH MATERIAL AND WASTE STORAGE AREAS, AND OTHER NON-STORMWATER CONTROLS. (SECTION 2.3.7)
- KEEP WASTE CONTAINER LIDS CLOSED WHEN NOT IN USE AND CLOSE LIDS AT THE END OF THE BUSINESS DAY FOR THOSE CONTAINERS THAT ARE ACTIVELY USED THROUGHOUT THE DAY. FOR WASTE CONTAINERS THAT DO NOT HAVE LIDS, PROVIDE EITHER (1) COVER (E.G., A TARP, PLASTIC SHEETING, TEMPORARY ROOF) TO PREVENT EXPOSURE OF WASTES TO PRECIPITATION, OR (2) A SIMILARLY EFFECTIVE MEANS DESIGNED TO PREVENT THE DISCHARGE OF POLLUTANTS (E.G., SECONDARY CONTAINMENT). (SECTION 2.3.7)
- PREVENT TRACKING OF SEDIMENT ONTO PUBLIC OR PRIVATE ROADS USING BMPS SUCH AS: CONSTRUCTION ENTRANCE, GRAVELED (OR PAVED) EXITS AND PARKING AREAS, GRAVEL ALL UNPAVED ROADS LOCATED ONSITE, OR USE AN EXIT TIRE WASH. THESE BMPS MUST BE IN PLACE PRIOR TO LAND-DISTURBING ACTIVITIES. (SECTION 2.2.7)
- WHEN TRUCKING SATURATED SOILS FROM THE SITE, EITHER USE WATER-TIGHT TRUCKS OR DRAIN LOADS ON SITE. (SECTION 2.2.7.F)
- CONTROL PROHIBITED DISCHARGES FROM LEAVING THE CONSTRUCTION SITE, I.E., CONCRETE WASH-OUT, WASTEWATER FROM CLEANOUT OF STUCCO, PAINT AND CURING COMPOUNDS. (SECTIONS 1.5 AND 2.3.9)
- ENSURE THAT STEEP SLOPE AREAS WHERE CONSTRUCTION ACTIVITIES ARE NOT OCCURRING ARE NOT DISTURBED. (SECTION 2.2.10)
- PREVENT SOIL COMPACTION IN AREAS WHERE POST-CONSTRUCTION INFILTRATION FACILITIES ARE TO BE INSTALLED. (SECTION 2.2.12)
- USE BMPS TO PREVENT OR MINIMIZE STORMWATER EXPOSURE TO POLLUTANTS FROM SPILLS, VEHICLE AND EQUIPMENT FUELING, MAINTENANCE, AND STORAGE; OTHER CLEANING AND MAINTENANCE ACTIVITIES; AND WASTE HANDLING ACTIVITIES. THESE POLLUTANTS INCLUDE FUEL, HYDRAULIC FLUID, AND OTHER OILS FROM VEHICLES AND MACHINERY, AS WELL AS DEBRIS, FERTILIZER, PESTICIDES AND HERBICIDES, PAINTS, SOLVENTS, CURING COMPOUNDS AND ADHESIVES FROM CONSTRUCTION OPERATIONS. (SECTIONS 2.2.15 AND 2.3)
- PROVIDE PLANS FOR SEDIMENTATION BASINS THAT HAVE BEEN DESIGNED PER SECTION 2.2.17 AND STAMPED BY OREGON PROFESSIONAL ENGINEER. (SECTION 2.2.17.A)
- IF ENGINEERED SOILS ARE USED ON SITE, A SEDIMENTATION BASIN/IMPONEMENT MUST BE INSTALLED. (SEE SECTIONS 2.2.17 AND 2.2.18)
- PROVIDE A DEWATERING PLAN FOR ACCUMULATED WATER FROM PRECIPITATION AND UNCONTAMINATED GROUNDWATER SEEPAGE DUE TO SHALLOW EXCAVATION ACTIVITIES. (SEE SECTION 2.4)
- IMPLEMENT THE FOLLOWING BMPS WHEN APPLICABLE: WRITTEN SPILL PREVENTION AND RESPONSE PROCEDURES, EMPLOYEE TRAINING ON SPILL PREVENTION AND PROPER DISPOSAL PROCEDURES, SPILL KITS IN ALL VEHICLES, REGULAR MAINTENANCE SCHEDULE FOR VEHICLES AND MACHINERY, MATERIAL DELIVERY AND STORAGE CONTROLS, TRAINING AND SIGNAGE, AND COVERED STORAGE AREAS FOR WASTE AND SUPPLIES. (SECTION 2.3)
- USE WATER, SOIL-BINDING AGENT OR OTHER DUST CONTROL TECHNIQUE AS NEEDED TO AVOID WIND-BLOWN SOIL. (SECTION 2.2.9)
- THE APPLICATION RATE OF FERTILIZERS USED TO REESTABLISH VEGETATION MUST FOLLOW MANUFACTURER'S RECOMMENDATIONS TO MINIMIZE NUTRIENT RELEASES TO SURFACE WATERS. EXERCISE CAUTION WHEN USING TIME-RELEASE FERTILIZERS WITHIN ANY WATERWAY RIPARIAN ZONE. (SECTION 2.3.5)
- IF AN ACTIVE TREATMENT SYSTEM (FOR EXAMPLE, ELECTRO-COAGULATION, FLOCCULATION, FILTRATION, ETC.) FOR SEDIMENT OR OTHER POLLUTANT REMOVAL IS EMPLOYED, SUBMIT AN OPERATION AND MAINTENANCE PLAN (INCLUDING SYSTEM SCHEMATIC, LOCATION OF SYSTEM, LOCATION OF INLET, LOCATION OF DISCHARGE, DISCHARGE DISPERSION DEVICE DESIGN, AND A SAMPLING PLAN AND FREQUENCY) BEFORE OPERATING THE TREATMENT SYSTEM. OBTAIN ENVIRONMENTAL MANAGEMENT PLAN APPROVAL FROM DEQ BEFORE OPERATING THE TREATMENT SYSTEM. OPERATE AND MAINTAIN THE TREATMENT SYSTEM ACCORDING TO MANUFACTURER'S SPECIFICATIONS. (SECTION 1.2.9)
- TEMPORARILY STABILIZE SOILS AT THE END OF THE SHIFT BEFORE HOLIDAYS AND WEEKENDS, IF NEEDED. THE REGISTRANT IS RESPONSIBLE FOR ENSURING THAT SOILS ARE STABLE DURING RAIN EVENTS AT ALL TIMES OF THE YEAR. (SECTION 2.2)
- AS NEEDED BASED ON WEATHER CONDITIONS, AT THE END OF EACH WORKDAY SOIL STOCKPILES MUST BE STABILIZED OR COVERED, OR OTHER BMPS MUST BE IMPLEMENTED TO PREVENT DISCHARGES TO SURFACE WATERS OR CONVEYANCE SYSTEMS LEADING TO SURFACE WATERS. (SECTION 2.2.8)
- SEDIMENT FENCE: REMOVE TRAPPED SEDIMENT BEFORE IT REACHES ONE THIRD OF THE ABOVE GROUND FENCE HEIGHT AND BEFORE FENCE REMOVAL. (SECTION 2.1.5.B)
- OTHER SEDIMENT BARRIERS (SUCH AS BIOBAGS): REMOVE SEDIMENT BEFORE IT REACHES TWO INCHES DEPTH ABOVE GROUND HEIGHT AND BEFORE BMP REMOVAL. (SECTION 2.1.5.C)
- CATCH BASINS: CLEAN BEFORE RETENTION CAPACITY HAS BEEN REDUCED BY FIFTY PERCENT. SEDIMENT BASINS AND SEDIMENT TRAPS: REMOVE TRAPPED SEDIMENTS BEFORE DESIGN CAPACITY HAS BEEN REDUCED BY FIFTY PERCENT AND AT COMPLETION OF PROJECT. (SECTION 2.1.5.D)
- WITHIN 24 HOURS, SIGNIFICANT SEDIMENT THAT HAS LEFT THE CONSTRUCTION SITE, MUST BE REMEDIATED. INVESTIGATE THE CAUSE OF THE SEDIMENT RELEASE AND IMPLEMENT STEPS TO PREVENT A RECURRENCE OF THE DISCHARGE WITHIN THE SAME 24 HOURS, ANY IN-STREAM CLEAN-UP OF SEDIMENT SHALL BE PERFORMED ACCORDING TO THE OREGON DEPARTMENT OF STATE LANDS REQUIRED TIMFRAME. (SECTION 2.2.19.A)
- THE INTENTIONAL WASHING OF SEDIMENT INTO STORM SEWERS OR DRAINAGE WAYS MUST NOT OCCUR. VACUUMING OR DRY SWEEPING AND MATERIAL PICKUP MUST BE USED TO CLEANUP RELEASED SEDIMENTS. (SECTION 2.2.19)
- DOCUMENT ANY PORTION(S) OF THE SITE WHERE LAND DISTURBING ACTIVITIES HAVE PERMANENTLY CEASED OR WILL BE TEMPORARILY INACTIVE FOR 14 OR MORE CALENDAR DAYS. (SECTION 6.5.F)
- PROVIDE TEMPORARY STABILIZATION FOR THAT PORTION OF THE SITE WHERE CONSTRUCTION ACTIVITIES CEASE FOR 14 DAYS OR MORE WITH A COVERING OF BLOWN STRAW AND A TACKIFIER, LOOSE STRAW, OR AN ADEQUATE COVERING OF COMPOST MULCH UNTIL WORK RESUMES ON THAT PORTION OF THE SITE. (SECTION 2.2.20)
- DO NOT REMOVE TEMPORARY SEDIMENT CONTROL PRACTICES UNTIL PERMANENT VEGETATION OR OTHER COVER OF EXPOSED AREAS IS ESTABLISHED. ONCE CONSTRUCTION IS COMPLETE AND THE SITE IS STABILIZED, ALL TEMPORARY EROSION CONTROLS AND RETAINED SOILS MUST BE REMOVED AND DISPOSED OF PROPERLY, UNLESS NEEDED FOR LONG TERM USE FOLLOWING TERMINATION OF PERMIT COVERAGE. (SECTION 2.2.21)



## BMP MATRIX FOR CONSTRUCTION PHASES

	CLEARING	MASS GRADING	UTILITY INSTALLATION	STREET CONSTRUCTION	FINAL STABILIZATION
<b>EROSION PREVENTION</b>					
PRESERVE NATURAL VEGETATION	X	X	X	X	X
GROUND COVER					X
HYDRAULIC APPLICATIONS (HYDRO SEEDING)					X
PLASTIC SHEETING	X	X			
MATTING					X
DUST CONTROL	X	X	X	X	X
TEMPORARY/PERMANENT SEEDING		X			X
BUFFER ZONE	** X	X	X	X	X
<b>SEDIMENT CONTROL</b>					
SEDIMENT FENCE (PERIMETER)	** X	X	X	X	X
SEDIMENT FENCE (INTERIOR)	** X	X	X	X	X
INLET PROTECTION	** X	X	X	X	X
STRAW WATTLES	** X	X	X	X	
FILTER BERM					X
DEWATERING			X		
SEDIMENT TRAP		X	X	X	X
NATURAL BUFFER ENCROACHMENT	X	X	X	X	X
<b>RUNOFF CONTROL</b>					
CONSTRUCTION ENTRANCE	** X	X	X	X	
PIPE SLOPE DRAIN					
OUTLET PROTECTION	** X	X	X	X	
SURFACE ROUGHENING		X			X
CHECK DAMS					X
<b>POLLUTION PREVENTION</b>					
PROPER SIGNAGE	X	X	X	X	X
HAZ WASTE MGMT	X	X	X	X	X
SPILL KIT ON-SITE	X	X	X	X	X
CONCRETE WASHOUT AREA	X	X	X	X	X

\* SIGNIFIES BMP'S REQUIRED FOR WORK WITHIN 50' OF WATER OF THE STATE  
 \*\*SIGNIFIES BMP THAT WILL BE INSTALLED PRIOR TO ANY GROUND DISTURBING ACTIVITY

	SITE CONDITION	MINIMUM FREQUENCY
1	ACTIVE PERIOD	ON INITIAL DATE THAT LAND DISTURBANCE ACTIVITIES COMMENCE. WITHIN 24 HOURS OF ANY STORM EVENT, INCLUDING RUNOFF FROM SNOW MELT, THAT RESULTS IN DISCHARGE FROM THE SITE. AT LEAST ONCE EVERY 14 DAYS, REGARDLESS OF WHETHER STORMWATER RUNOFF IS OCCURRING
2	INACTIVE PERIODS GREATER THAN FOURTEEN (14) CONSECUTIVE CALENDAR DAYS.	THE INSPECTOR MAY REDUCE THE FREQUENCY OF INSPECTIONS IN ANY AREA OF THE SITE WHERE THE STABILIZATION STEPS IN SECTION 2.2.20 HAVE BEEN COMPLETED TO TWICE PER MONTH FOR THE FIRST MONTH, NO LESS THAN 14 CALENDAR DAYS APART, THEN ONCE A MONTH
3	PERIODS DURING WHICH THE SITE IS INACCESSIBLE DUE TO INCLEMENT WEATHER.	IF SAFE, ACCESSIBLE AND PRACTICAL, INSPECTIONS MUST OCCUR DAILY AT A RELEVANT DISCHARGE POINT OR DOWNSTREAM LOCATION OF THE RECEIVING WATERBODY.

## NARRATIVE DESCRIPTIONS

**EXISTING SITE CONDITIONS**  
 - OPEN FIELD AND ONE BUILDING ON ONE TAX LOT

**DEVELOPED SITE CONDITIONS**  
 - PARKING LOT

**NATURE OF CONSTRUCTION ACTIVITY AND TIME TABLE FOR MAJOR ACTIVITIES**  
 - CLEARING AND GRUBBING (APR-MAY 2024)  
 - GRADING (EXCAVATION & FILL) (MAY-JUNE 2024)  
 - STREET AND UTILITY CONSTRUCTION (JUNE-JULY 2024)  
 - FINAL STABILIZATION (JULY 2024)

**TOTAL SITE AREA = 22.50 ACRES**  
**TOTAL DISTURBED AREA ON-SITE = 7.65 ACRES**  
**TOTAL LEFT UNDISTURBED = 14.85 ACRES**

**ON-SITE SOILS HAVE A SLIGHT EROSION POTENTIAL. ALL FILL MATERIAL SHALL BE GENERATED ON-SITE FROM GRADING EXCAVATION AND UTILITY TRENCH SPOILS.**

**SITE SOIL CLASSIFICATION**  
 SAUVIE SILT LOAM, 0 TO 2 PERCENT SLOPES  
 SAUVIE-RAFTON-URBAN LAND COMPLEX, 0 TO 3 PERCENT SLOPES

**RECEIVING WATER BODY**  
 - WATER QUALITY FACILITY -> CITY OF PORTLAND DISCHARGE SYSTEM  
 -> COLUMBIA SLOUGH (LOWER)

**NEAREST OFFICIAL RAIN GAUGE**  
 - NEW COLUMBIA - KORPORTL1198, 1.0 MILE SE OF PROJECT SITE  
 - URL: [HTTPS://WWW.WUNDERGROUND.COM/DASHBOARD/PWS/KORPORTL1198](https://www.wunderground.com/dashboard/pws/korportl1198)

## PROJECT LOCATION

10505 N PORTLAND RD, PORTLAND, OR 97203  
 LAT: 45.599694 LONG: -122.720678

**PROPERTY DESCRIPTION**  
 1N1E05B  
 TAX LOT 1000 LOCATED IN SECTION 05 1N 1E, W.M. CITY OF PORTLAND, COUNTY OF MULTNOMAH, STATE OF OREGON

THE HORIZONTAL DATUM FOR THE PROJECT IS OCRS AND THE VERTICAL DATUM IS THE CITY OF PORTLAND.

THE VERTICAL DATUM FOR THIS SURVEY IS BASED UPON BENCHMARK 4704, ELEVATION = 62.578'

## DRAWING INDEX

- CE01 - 1200-CA COVER SHEET
- CE02 - EXISTING CONDITIONS, DEMOLITION, AND EROSION AND SEDIMENT CONTROL PLAN
- CE03 - UTILITY AND GRADING EROSION AND SEDIMENT CONTROL PLAN
- CE04 - FINAL LANDSCAPING AND STABILIZATION EROSION AND SEDIMENT CONTROL PLAN
- CE05 - EROSION AND SEDIMENT CONTROL DETAILS

## OWNER:

CITY OF PORTLAND  
 BUREAU OF ENVIRONMENTAL SERVICES  
 MICHELLE LADD  
 E-MAIL: MICHELLE.LADD@PORTLANDOREGON.GOV  
 503-823-8344 (P)

## SURVEYOR

PORTLAND BUREAU OF TRANSPORTATION  
 DANNY M DENNING  
 E-MAIL: DANNY.DENNING@PORTLANDOREGON.GOV  
 503-823-5947 (M)  
 503-823-7151 (P)

## PERMITEE'S SITE INSPECTOR

NAME: RONALD WHITE  
 COMPANY: PROBITY BUILDERS  
 EMAIL: RON@PROBITYBUILDERS.COM  
 PHONE: 503-880-8809  
 CESCL LEAD 82493  
 EXPERIENCE: 30+ YEARS OF CONSTRUCTION EXPERIENCE BOTH IN THE COMMERCIAL SECTOR IN PORTLAND AND IN THE US NAVY. WAS A CESCL INSPECTOR FOR THE DRAC MAUPIN PROJECT IN MAUPIN OR WHERE A NEW TRACK WAS BUILT NEXT TO THE DESCHUTES RIVER.

## CONTRACTOR LIST:

TO BE UPDATED BY BUILDER TO DOCUMENT EACH CONTRACTOR THAT ENGAGES IN CONSTRUCTION ACTIVITIES. UPDATE LIST AS APPROPRIATE AND SUBMIT REVISED ESCP COVER SHEET TO DEQ VIA YOUR DEQ ONLINE

## POLLUTION GENERATING DISCHARGES:

- THE PERMIT HOLDERS SHALL IMPLEMENT POLLUTION PREVENTION CONTROLS PER THE 1200-CA REQUIREMENTS TO PREVENT THE DISCHARGE OF POLLUTANTS TO STORMWATER AND TO PREVENT THE DISCHARGE OF POLLUTANTS FROM SPILLED OR LEAKED MATERIALS FROM CONSTRUCTION ACTIVITIES, SUCH AS BUILDING MATERIALS, BUILDING PRODUCTS, CONSTRUCTION WASTES, TRASH, LANDSCAPE MATERIALS, FERTILIZERS, PESTICIDES, HERBICIDES, DETERGENTS, SANITARY WASTE, FUELS, LUBRICANTS, AND OTHER MATERIALS PRESENT.
- PROVIDE WRITTEN SPILL PREVENTION AND RESPONSE PROCEDURES, TRAINING ON SPILL PREVENTION, AND PROPER DISPOSAL PROCEDURES, SPILL KITS AVAILABLE ON SITE, REGULARLY MAINTAINED VEHICLES AND MACHINERY, MATERIAL DELIVERY AND STORAGE CONTROLS, SIGNAGE, AND COVERED STORAGE AREAS FOR WASTE AND SUPPLIES.
- LOCATE ACTIVITIES AWAY FROM WATERS OF THE STATE AND STORMWATER INLETS OR CONVEYANCES SO THAT STORMWATER COMING INTO CONTACT WITH THESE ACTIVITIES CANNOT REACH WATERS OF THE STATE;
- ENSURE ADEQUATE SUPPLIES ARE AVAILABLE AT ALL TIMES TO HANDLE SPILLS, LEAKS, AND DISPOSAL OF LIQUIDS, AND PROVIDE SECONDARY CONTAINMENT (E.G. SPILL BERMS, DECKS, SPILL CONTAINMENT PALLETS);
- HAVE A SPILL KIT AVAILABLE ON SITE AND ENSURE PERSONNEL ARE AVAILABLE TO RESPOND EXPEDITIOUSLY IN THE EVENT OF A LEAK OR SPILL;
- CLEAN UP SPILLS OR CONTAMINATED SURFACES IMMEDIATELY USING DRY CLEAN UP MEASURES (DO NOT CLEAN CONTAMINATED SURFACES BY HOSING THE AREA DOWN), AND ELIMINATE THE SOURCE OF THE SPILL TO PREVENT A DISCHARGE OR A CONTINUATION OF AN ONGOING DISCHARGE; AND
- STORE MATERIALS IN A COVERED AREA (E.G., PLASTIC SHEETING, TEMPORARY ROOFS), OR IN SECONDARY CONTAINMENT TO PREVENT THE EXPOSURE OF THESE CONTAINERS TO PRECIPITATION OR STORMWATER RUNOFF, OR A SIMILARLY EFFECTIVE MEANS DESIGNED TO PREVENT THE DISCHARGE OF POLLUTANTS FROM THESE AREAS.
- USE DRIP PANS AND ABSORBENTS UNDER OR AROUND VEHICLES; AND DISPOSE OF OR RECYCLE OIL AND OILY WASTES IN ACCORDANCE WITH OTHER FEDERAL, STATE, TRIBAL, OR LOCAL REQUIREMENTS.
- STORE WASTE IN SEALED CONTAINERS, WHICH ARE CONSTRUCTED OF SUITABLE MATERIALS TO PREVENT LEAKAGE AND CORROSION, AND WHICH ARE CLEARLY LABELED WITH THEIR CONTENTS IN ACCORDANCE WITH ALL APPLICABLE FEDERAL, STATE, TRIBAL, OR LOCAL REQUIREMENTS;
- PROVIDE WASTE CONTAINERS (E.G., DUMPSTER, TRASH RECEPTACLE) THAT PROVIDE GROUND SEPARATION AND ARE OF SUFFICIENT SIZE AND NUMBER TO CONTAIN CONSTRUCTION AND DOMESTIC WASTES;
- DISCHARGES OF TOXIC OR HAZARDOUS SUBSTANCES FROM A SPILL OR OTHER RELEASE ARE PROHIBITED, CONSISTENT WITH SECTION 1.5. WHERE A LEAK, SPILL, OR OTHER RELEASE CONTAINING A HAZARDOUS SUBSTANCE OR OIL OCCURS DURING A 24-HOUR PERIOD, THE REGISTRANT MUST NOTIFY THE OREGON EMERGENCY RESPONSE SYSTEM AT (800) 452-0311 AS SOON AS THE REGISTRANT HAS KNOWLEDGE OF THE RELEASE. CONTACT INFORMATION MUST BE IN LOCATIONS THAT ARE READILY ACCESSIBLE AND AVAILABLE TO ALL EMPLOYEES.

**NOTICE TO EXCAVATORS:**  
 ATTENTION: OREGON LAW REQUIRES YOU TO FOLLOW RULES ADOPTED BY THE OREGON UTILITY NOTIFICATION CENTER. THOSE RULES ARE SET FORTH IN OAR 952-001-0010 THROUGH OAR 952-001-0090. YOU MAY OBTAIN COPIES OF THE RULES BY CALLING THE CENTER.  
 (NOTE: THE TELEPHONE NUMBER FOR THE OREGON UTILITY NOTIFICATION CENTER IS 503-232-1987).

POTENTIAL UNDERGROUND FACILITY OWNERS

**Dig Safely.**  
 Call the Oregon One-Call Center  
**DIAL 811 or 1-800-332-2344**

EMERGENCY TELEPHONE NUMBERS

NW NATURAL GAS  
 M-F 7am-6pm 503-226-4211 Ext.4313  
 AFTER HOURS 503-226-4211  
 PGE 503-464-7777  
 CENTURYLINK 1-800-573-1311  
 CITY BUREAU OF MAINTENANCE 503-823-1700  
 CITY WATER 503-823-4874  
 VERIZON 1-800-483-1000

	SITE CONDITION	MINIMUM FREQUENCY
4	PERIODS DURING WHICH CONSTRUCTION ACTIVITIES ARE SUSPENDED AND RUNOFF IS UNLIKELY DUE TO FROZEN CONDITIONS	VISUAL MONITORING INSPECTIONS MAY BE TEMPORARILY SUSPENDED. IMMEDIATELY RESUME MONITORING UPON THAWING, OR WHEN WEATHER CONDITIONS MAKE DISCHARGES LIKELY.
5	PERIODS DURING WHICH CONSTRUCTION ACTIVITIES ARE CONDUCTED AND RUNOFF IS UNLIKELY DURING FROZEN CONDITIONS	VISUAL MONITORING INSPECTIONS MAY BE TEMPORARILY SUSPENDED. IMMEDIATELY RESUME MONITORING UPON THAWING, OR WHEN WEATHER CONDITIONS MAKE DISCHARGES LIKELY.

THE PERMITEE IS REQUIRED TO MEET ALL THE CONDITIONS OF THE 1200-CA PERMIT. THIS ESCP AND GENERAL CONDITIONS HAVE BEEN DEVELOPED TO FACILITATE COMPLIANCE WITH THE 1200-CA PERMIT REQUIREMENTS. IN CASES OF DISCREPANCIES OR OMISSIONS, THE 1200-CA PERMIT REQUIREMENTS SUPERCEDE REQUIREMENTS OF THIS PLAN.

THESE PLANS ARE FULL SIZE ON 34x22 (ANSI-D) PAPER, IF PLOTTED ON 11x17 (ANSI-B) SCALE ACCORDINGLY.

CITY OF PORTLAND VERTICAL DATUM AND OCRS83.PORTLANDIF

P:\0493-017 TEMPORARY ALTERNATE SHELTER SITE\_2\DWG\CIVL\1200-C\EXXXXXX\_CE01.DWG 3/5/2024 STEVE HANSEN

NO.	DATE	DESCRIPTION	APPD.
		REVISION	

CITY OF PORTLAND  
**ENVIRONMENTAL SERVICES**

MINGUS MAPPS  
 COMMISSIONER

APPROVAL

PAUL SUTO, P.E.  
 CHIEF ENGINEER

ENVIRONMENTAL SERVICES CHIEF ENGINEER  
 REG. PROF. ENGR. NO. 82245

REGISTERED PROFESSIONAL  
**ENGINEER**  
 82915PE

OREGON  
 MAY 12 2008  
**STEVEN WELLS HANSEN**  
 EXPIRES: 6/30/2025

WEST PROPERTY TASS 2

----

COVER SHEET

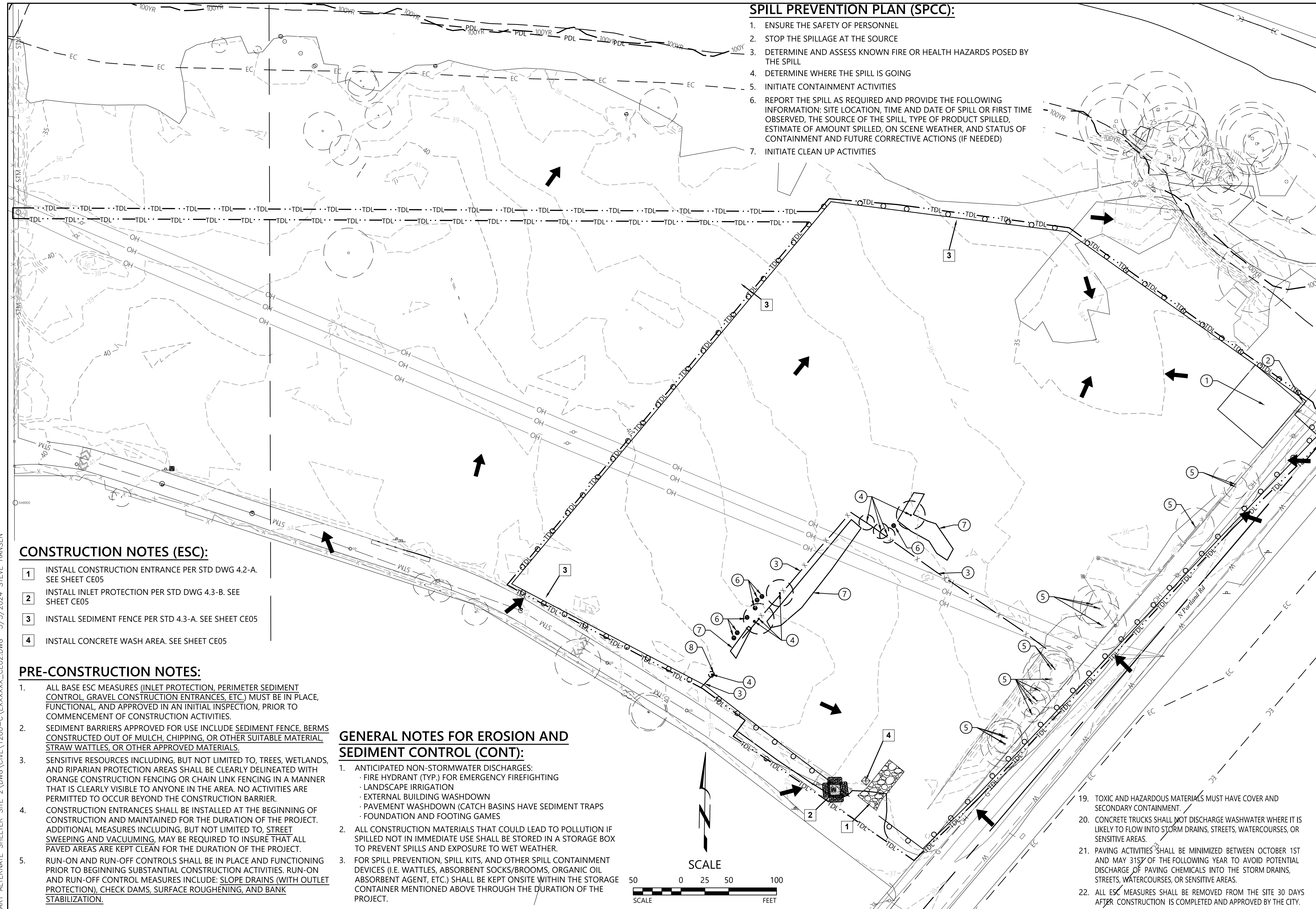
1/4 SECTION

JOB NO. Exxxxx

SHEET NO. CE01

01 OF 05

P:\0493-017 TEMPORARY ALTERNATE SHELTER SITE\_2\DWG\CIVIL\200-C\EXXXXXX\_CE02.DWG 3/5/2024 STEVE HANSEN



**SPILL PREVENTION PLAN (SPCC):**

1. ENSURE THE SAFETY OF PERSONNEL
2. STOP THE SPILLAGE AT THE SOURCE
3. DETERMINE AND ASSESS KNOWN FIRE OR HEALTH HAZARDS POSED BY THE SPILL
4. DETERMINE WHERE THE SPILL IS GOING
5. INITIATE CONTAINMENT ACTIVITIES
6. REPORT THE SPILL AS REQUIRED AND PROVIDE THE FOLLOWING INFORMATION: SITE LOCATION, TIME AND DATE OF SPILL OR FIRST TIME OBSERVED, THE SOURCE OF THE SPILL, TYPE OF PRODUCT SPILLED, ESTIMATE OF AMOUNT SPILLED, ON SCENE WEATHER, AND STATUS OF CONTAINMENT AND FUTURE CORRECTIVE ACTIONS (IF NEEDED)
7. INITIATE CLEAN UP ACTIVITIES

**CONSTRUCTION NOTES:**

- 1 EXIST. BUILDING TO BE DEMOLISHED - FOUNDATION PAD TO REMAIN
- 2 EXIST. HYDRANT TO REMAIN AND BE PROTECTED
- 3 EXIST. CHAIN LINK FENCE TO BE DEMOLISHED
- 4 EXIST. TREE TO BE DEMOLISHED
- 5 EXIST. TREE TO REMAIN AND BE PROTECTED
- 6 EXIST. BRUSH TO BE DEMOLISHED
- 7 EXIST. HEDGE TO BE DEMOLISHED
- 8 EXIST. GATE TO BE DEMOLISHED

**EROSION CONTROL GENERAL NOTES:**

1. THE IMPLEMENTATION OF THIS ESC PLAN AND THE CONSTRUCTION, MAINTENANCE, REPLACEMENT, AND UPGRADING OF THE ESC FACILITIES IS THE RESPONSIBILITY OF THE APPLICANT/CONTRACTOR UNTIL ALL CONSTRUCTION IS COMPLETED, APPROVED AND VEGETATION/LANDSCAPING IS ESTABLISHED.
2. THE ESC PLAN, ANY REVISIONS, AND INSPECTION LOGS SHALL BE KEPT ONSITE AT ALL TIMES.
3. THE ESC MEASURES SHOWN ON THE PLAN ARE THE MINIMUM REQUIREMENTS FOR THE PROJECT SITE AND SHALL BE UPGRADED AS NEEDED TO MAINTAIN COMPLIANCE WITH ALL REGULATIONS.
4. ALL ESC MEASURES SHALL BE APPROVED, IN PLACE, AND FUNCTIONAL PRIOR TO ANY GROUND DISTURBANCE OF THE SITE. CONTRACTOR SHALL MAINTAIN ALL ESC MEASURES THROUGHOUT CONSTRUCTION.
5. CLEARING LIMITS, CRITICAL RIPARIAN AREAS, BUFFER ZONES, AND PRESERVED VEGETATION (INCLUDING IMPORTANT TREES AND ASSOCIATED CRITICAL ROOT ZONES) SHALL HAVE HIGH VISIBILITY FENCE INSTALLED BEFORE GRADING OR CONSTRUCTION TO IDENTIFY, MARK, AND PROTECT THE AREAS.
6. CONSTRUCTION ACTIVITIES WILL AVOID OR MINIMIZE ANY EXCAVATION OR OTHER SOIL DESTABILIZATION FROM OCTOBER 1ST TO MAY 31ST OF THE FOLLOWING YEAR.
7. TEMPORARY SITE STABILIZATION MEASURES WILL BE INSTALLED AT THE END OF THE SHIFT BEFORE A HOLIDAY OR WEEKEND OR AT THE END OF EACH WORKDAY IF RAIN IS FORECAST IN THE NEXT 24 HOURS.
8. SEDIMENT CONTROLS MUST BE INSTALLED AND MAINTAINED ALONG THE SITE PERIMETER ON ALL DOWN-GRADIENT SIDES OF THE CONSTRUCTION SITE AND AT ALL ACTIVE AND OPERATIONAL INTERNAL STORMDRAINS AT ALL TIMES DURING CONSTRUCTION.
9. DRY METHODS MUST BE USED TO REMOVE SEDIMENT AND CONCRETE SWEEPINGS FROM AREAS WHERE DISCHARGE IS LIKELY TO REACH STORM DRAINS, STREETS, WATERCOURSES, OR SENSITIVE AREAS.
10. ALL DIRT AND DEBRIS TRACKED ONTO STREETS MUST BE REMOVED IMMEDIATELY IF IT CAN BE SPREAD BY TRAFFIC OR OTHERWISE REACH STORM DRAINS, WATERCOURSES, OR SENSITIVE AREAS.
11. SEDIMENT DISCHARGED OFFSITE MUST BE PLACED BACK ONSITE WITHIN 24 HOURS AND STABILIZED. IN-STREAM WORK SHALL BE PERFORMED IN ACCORDANCE WITH THE PROCEDURES AND TIMEFRAMES OF THE OREGON DEPARTMENT OF STATE LANDS.
12. NO SEDIMENT-LADEN WATER MAY BE PUMPED, DIVERTED, OR OTHERWISE DISCHARGED OFFSITE UNLESS APPROVED BY THE ESC PLAN.
13. SEDIMENT MUST BE REMOVED WHEN IT HAS REACHED THE LEVEL SPECIFIED IN THE STANDARD DETAIL.
14. SEDIMENT MUST BE REMOVED FROM SUMPED STRUCTURES WHEN THE SEDIMENT RETENTION CAPACITY HAS BEEN REDUCED BY 1/3RD AND WITHIN 30 DAYS OF PROJECT COMPLETION.
15. WHEN REMOVING SATURATED SOILS FROM THE SITE, EITHER WATERTIGHT TRUCKS MUST BE USED OR LOADS MUST BE DRAINED ONSITE UNTIL DRIPPING HAS BEEN REDUCED TO MINIMIZE SPILLAGE.
16. EROSION CONTROL MEASURES WILL BE INSPECTED ON ACTIVE SITES AT LEAST WEEKLY OR AFTER PRECIPITATION IN EXCESS OF 0.5 INCHES IN 24 HOURS. IF A SITE WILL BE INACTIVE MORE THAN CITY OF NEWBERG EROSION CONTROL MANUAL 2014 PAGE 30 FOURTEEN (14) DAYS, EROSION CONTROL MEASURES WILL BE INSPECTED PRIOR TO THE INACTIVE PERIOD AND EVERY TWO (2) WEEKS DURING THE INACTIVE PERIOD.
17. ALL CONSTRUCTION SITES MUST FOLLOW PROPER STORAGE, APPLICATION, AND DISPOSAL PROCEDURES OF CONSTRUCTION DEBRIS, WASTE, OR SPOIL MATERIAL WILL OCCUR IN ANY STREAM, STORMWATER SYSTEM, WETLANDS, SURFACE WATERS, OR OTHER WATERCOURSES OR SENSITIVE AREAS.
18. WRITTEN SPILL PREVENTION AND RESPONSE PROCEDURES ARE REQUIRED FOR ALL SITES.
19. TOXIC AND HAZARDOUS MATERIALS MUST HAVE COVER AND SECONDARY CONTAINMENT.
20. CONCRETE TRUCKS SHALL NOT DISCHARGE WASHWATER WHERE IT IS LIKELY TO FLOW INTO STORM DRAINS, STREETS, WATERCOURSES, OR SENSITIVE AREAS.
21. PAVING ACTIVITIES SHALL BE MINIMIZED BETWEEN OCTOBER 1ST AND MAY 31ST OF THE FOLLOWING YEAR TO AVOID POTENTIAL DISCHARGE OF PAVING CHEMICALS INTO THE STORM DRAINS, STREETS, WATERCOURSES, OR SENSITIVE AREAS.
22. ALL ESC MEASURES SHALL BE REMOVED FROM THE SITE 30 DAYS AFTER CONSTRUCTION IS COMPLETED AND APPROVED BY THE CITY.

**CONSTRUCTION NOTES (ESC):**

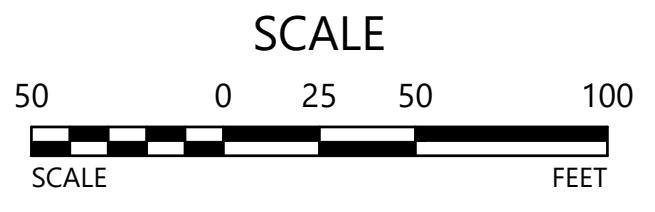
- 1 INSTALL CONSTRUCTION ENTRANCE PER STD DWG 4.2-A. SEE SHEET CE05
- 2 INSTALL INLET PROTECTION PER STD DWG 4.3-B. SEE SHEET CE05
- 3 INSTALL SEDIMENT FENCE PER STD 4.3-A. SEE SHEET CE05
- 4 INSTALL CONCRETE WASH AREA. SEE SHEET CE05

**PRE-CONSTRUCTION NOTES:**

1. ALL BASE ESC MEASURES (INLET PROTECTION, PERIMETER SEDIMENT CONTROL, GRAVEL CONSTRUCTION ENTRANCES, ETC.) MUST BE IN PLACE, FUNCTIONAL, AND APPROVED IN AN INITIAL INSPECTION, PRIOR TO COMMENCEMENT OF CONSTRUCTION ACTIVITIES.
2. SEDIMENT BARRIERS APPROVED FOR USE INCLUDE SEDIMENT FENCE, BERMS CONSTRUCTED OUT OF MULCH, CHIPPING, OR OTHER SUITABLE MATERIAL, STRAW WATTLES, OR OTHER APPROVED MATERIALS.
3. SENSITIVE RESOURCES INCLUDING, BUT NOT LIMITED TO, TREES, WETLANDS, AND RIPARIAN PROTECTION AREAS SHALL BE CLEARLY DELINEATED WITH ORANGE CONSTRUCTION FENCING OR CHAIN LINK FENCING IN A MANNER THAT IS CLEARLY VISIBLE TO ANYONE IN THE AREA. NO ACTIVITIES ARE PERMITTED TO OCCUR BEYOND THE CONSTRUCTION BARRIER.
4. CONSTRUCTION ENTRANCES SHALL BE INSTALLED AT THE BEGINNING OF CONSTRUCTION AND MAINTAINED FOR THE DURATION OF THE PROJECT. ADDITIONAL MEASURES INCLUDING, BUT NOT LIMITED TO, STREET SWEEPING AND VACUUMING, MAY BE REQUIRED TO INSURE THAT ALL PAVED AREAS ARE KEPT CLEAN FOR THE DURATION OF THE PROJECT.
5. RUN-ON AND RUN-OFF CONTROLS SHALL BE IN PLACE AND FUNCTIONING PRIOR TO BEGINNING SUBSTANTIAL CONSTRUCTION ACTIVITIES. RUN-ON AND RUN-OFF CONTROL MEASURES INCLUDE: SLOPE DRAINS (WITH OUTLET PROTECTION), CHECK DAMS, SURFACE ROUGHENING, AND BANK STABILIZATION.

**GENERAL NOTES FOR EROSION AND SEDIMENT CONTROL (CONT):**

1. ANTICIPATED NON-STORMWATER DISCHARGES:
  - FIRE HYDRANT (TYP.) FOR EMERGENCY FIREFIGHTING
  - LANDSCAPE IRRIGATION
  - EXTERNAL BUILDING WASHDOWN
  - PAVEMENT WASHDOWN (CATCH BASINS HAVE SEDIMENT TRAPS)
  - FOUNDATION AND FOOTING GAMES
2. ALL CONSTRUCTION MATERIALS THAT COULD LEAD TO POLLUTION IF SPILLED NOT IN IMMEDIATE USE SHALL BE STORED IN A STORAGE BOX TO PREVENT SPILLS AND EXPOSURE TO WET WEATHER.
3. FOR SPILL PREVENTION, SPILL KITS, AND OTHER SPILL CONTAINMENT DEVICES (I.E. WATTLES, ABSORBENT SOCKS/BROOMS, ORGANIC OIL ABSORBENT AGENT, ETC.) SHALL BE KEPT ONSITE WITHIN THE STORAGE CONTAINER MENTIONED ABOVE THROUGHOUT THE DURATION OF THE PROJECT.



XREF(S) USED: :0493-017 - xTopo-Text:0493-017 - Prop Line:0493-017 - XEros		DESIGNED BY	DATE APPROVED
ROTATION ANGLE: #####		DRAWN BY	ENGR. SUPV.
CONSTRUCTED BY		CHECKED BY	ENGR. DIV. MGR.
PROJECT COMPLETED		BES DESIGN LEAD	CONST. DIV. MGR.
MAP CORRECTED BY			
CHECKED BY			
DRAWING NAME: FINAL MAP DATA			
DRAWING NAME: EXXXXXX_CE02.dwg			
NO.	DATE	DESCRIPTION	APPD.
		REVISION	

CITY OF PORTLAND  
**ENVIRONMENTAL SERVICES**



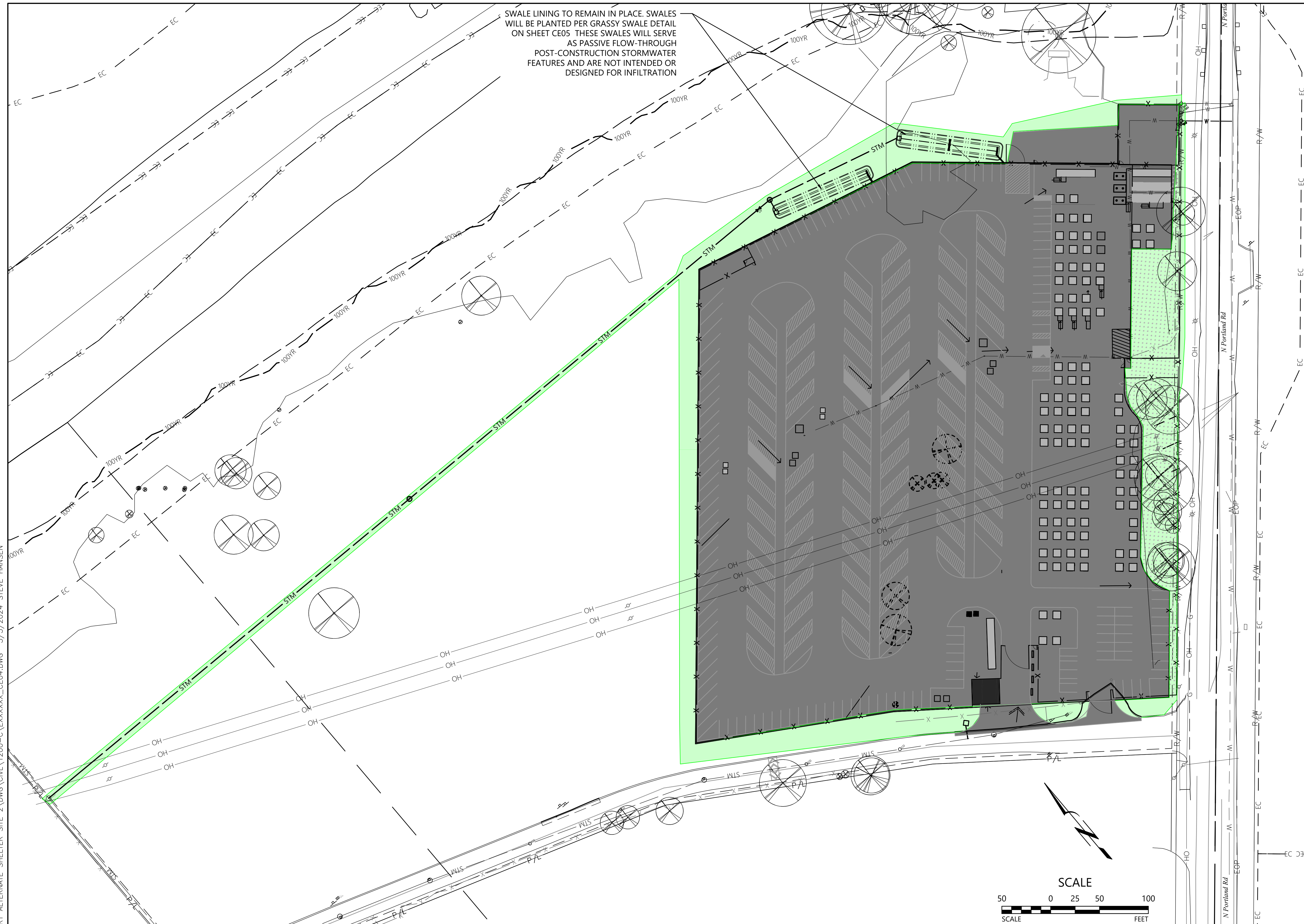
**WEST PROPERTY TASS 2**

EXISTING CONDITIONS, DEMOLITION, AND EROSION AND SEDIMENT CONTROL PLAN

1/4 SECTION  
JOB NO. Exxxxx  
SHEET NO. CE02  
02 OF 05



P:\0493-017 TEMPORARY ALTERNATE SHELTER SITE 2\DWG\CIVIL\200-C\EXXXXXX\_CE04.DWG 3/5/2024 STEVE HANSEN



SWALE LINING TO REMAIN IN PLACE. SWALES WILL BE PLANTED PER GRASSY SWALE DETAIL ON SHEET CE05. THESE SWALES WILL SERVE AS PASSIVE FLOW-THROUGH POST-CONSTRUCTION STORMWATER FEATURES AND ARE NOT INTENDED OR DESIGNED FOR INFILTRATION.

**LEGEND:**

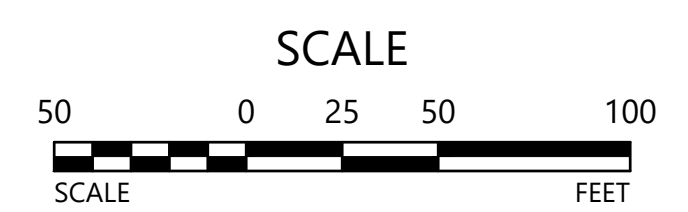
- NATIVE SEEDING
- PAVED SURFACING

**GENERAL NOTES FOR EROSION AND SEDIMENT CONTROL (CONT):**

1. ANTICIPATED NON-STORMWATER DISCHARGES:
  - FIRE HYDRANT (TYP.) FOR EMERGENCY FIREFIGHTING
  - LANDSCAPE IRRIGATION
  - EXTERNAL BUILDING WASHDOWN
  - PAVEMENT WASHDOWN (CATCH BASINS HAVE SEDIMENT TRAPS)
  - FOUNDATION AND FOOTING DRAINS
2. ALL CONSTRUCTION MATERIALS THAT COULD LEAD TO POLLUTION IF SPILLED NOT IN IMMEDIATE USE SHALL BE STORED IN A STORAGE BOX TO PREVENT SPILLS AND EXPOSURE TO WET WEATHER.
3. FOR SPILL PREVENTION, SPILL KITS, AND OTHER SPILL CONTAINMENT DEVICES (I.E. WATTLES, ABSORBENT SOCKS/BROOMS, ORGANIC OIL ABSORBENT AGENT, ETC.) SHALL BE KEPT ONSITE WITHIN THE STORAGE CONTAINER MENTIONED ABOVE THROUGH THE DURATION OF THE PROJECT.

**SPILL PREVENTION PLAN (SPCC):**

1. ENSURE THE SAFETY OF PERSONNEL
2. STOP THE SPILLAGE AT THE SOURCE
3. DETERMINE AND ASSESS KNOWN FIRE OR HEALTH HAZARDS POSED BY THE SPILL
4. DETERMINE WHERE THE SPILL IS GOING
5. INITIATE CONTAINMENT ACTIVITIES
6. REPORT THE SPILL AS REQUIRED AND PROVIDE THE FOLLOWING INFORMATION: SITE LOCATION, TIME AND DATE OF SPILL OR FIRST TIME OBSERVED, THE SOURCE OF THE SPILL, TYPE OF PRODUCT SPILLED, ESTIMATE OF AMOUNT SPILLED, ON SCENE WEATHER, AND STATUS OF CONTAINMENT AND FUTURE CORRECTIVE ACTIONS (IF NEEDED)
7. INITIATE CLEAN UP ACTIVITIES



NO.	DATE	DESCRIPTION	APPD.

XREF(S) USED:	0493-017 - Site Plan; 0493-017 - xTopo-Text; 0493-017 - Prop Line; 0493-017 - Xbase; 0493-017 - Site Plan-UPDATE
ROTATION ANGLE:	40d0'0"
CONSTRUCTED BY:	
PROJECT COMPLETED:	
MAP CORRECTED BY:	CHECKED BY:
DRAWING NAME:	FINAL MAP DATA
DESIGNED BY:	
DATE APPROVED:	
DRAWN BY:	ENGR. SUPV.:
CHECKED BY:	ENGR. DIV. MGR.:
BES DESIGN LEAD:	CONST. DIV. MGR.:

CITY OF PORTLAND  
**ENVIRONMENTAL SERVICES**

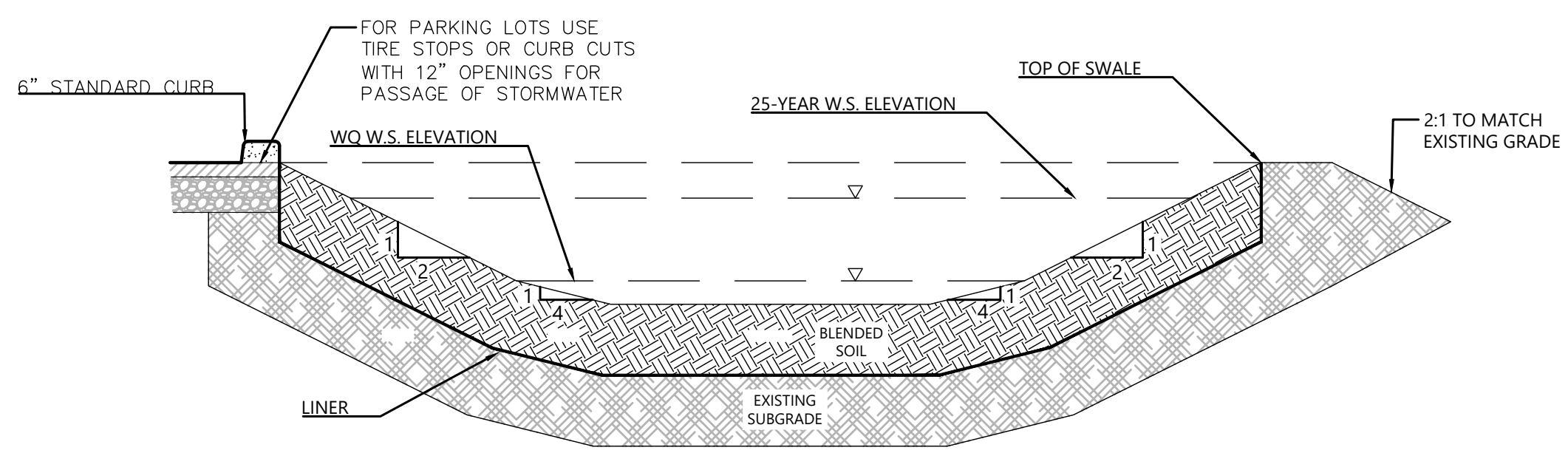
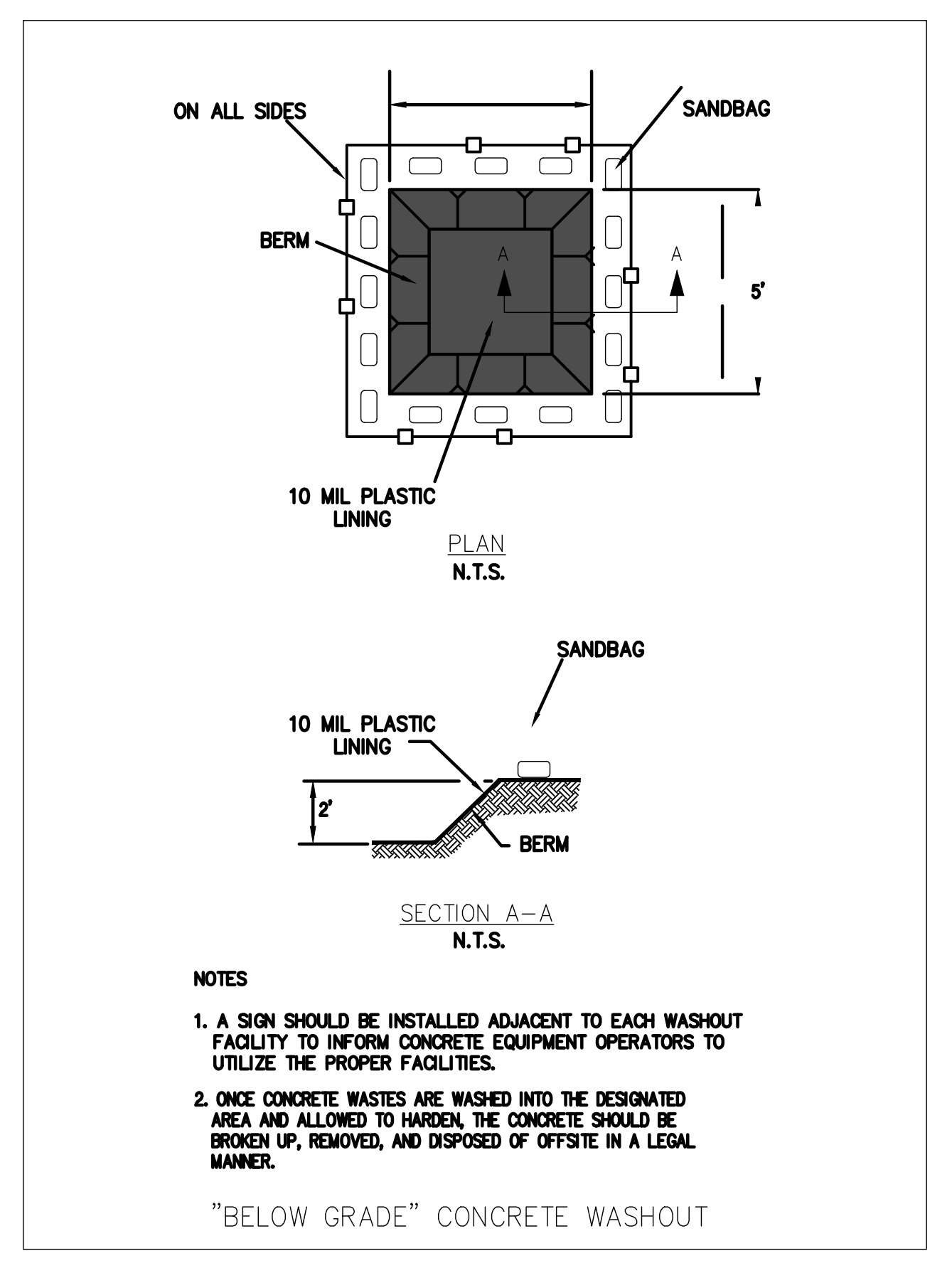
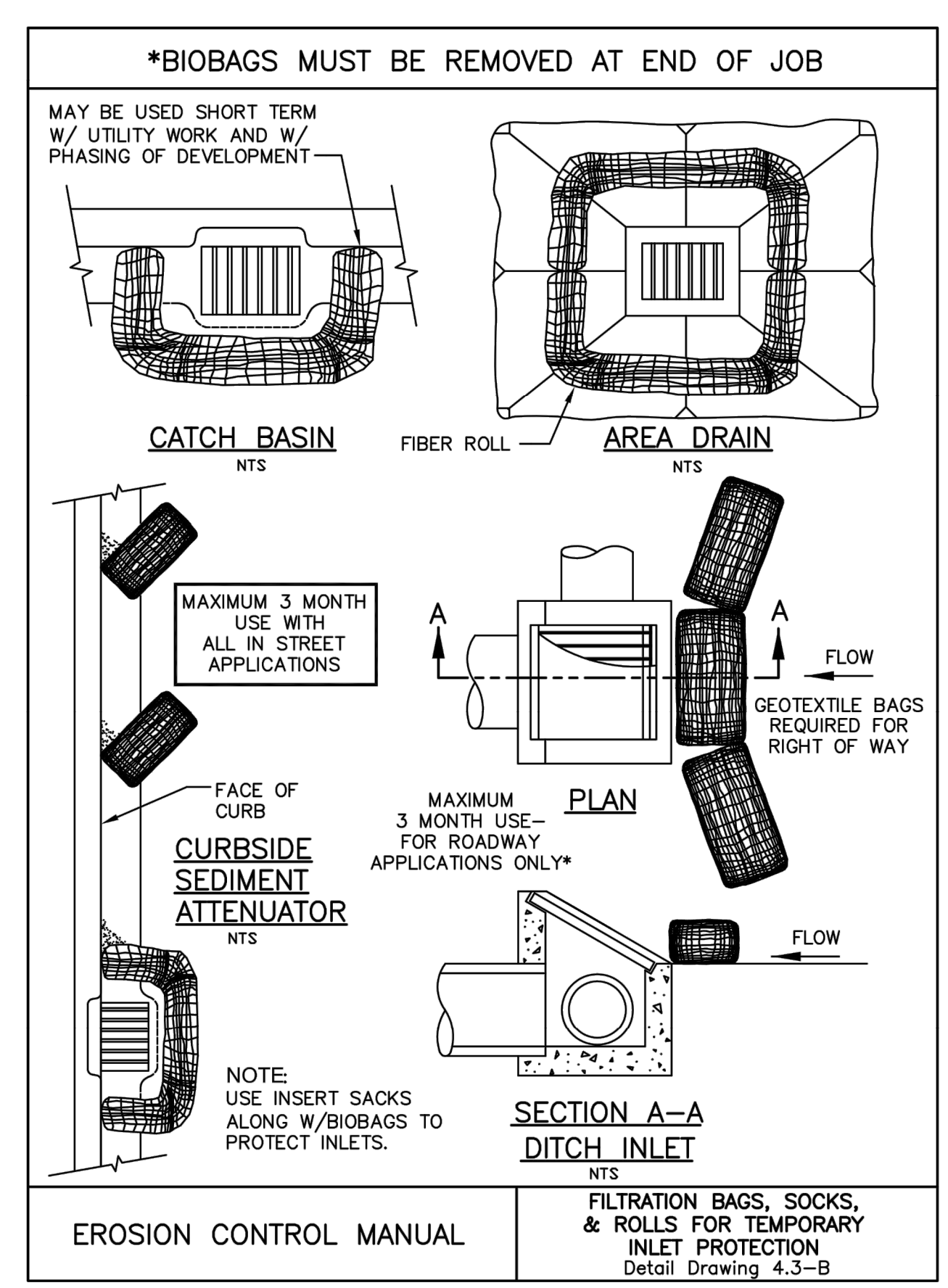
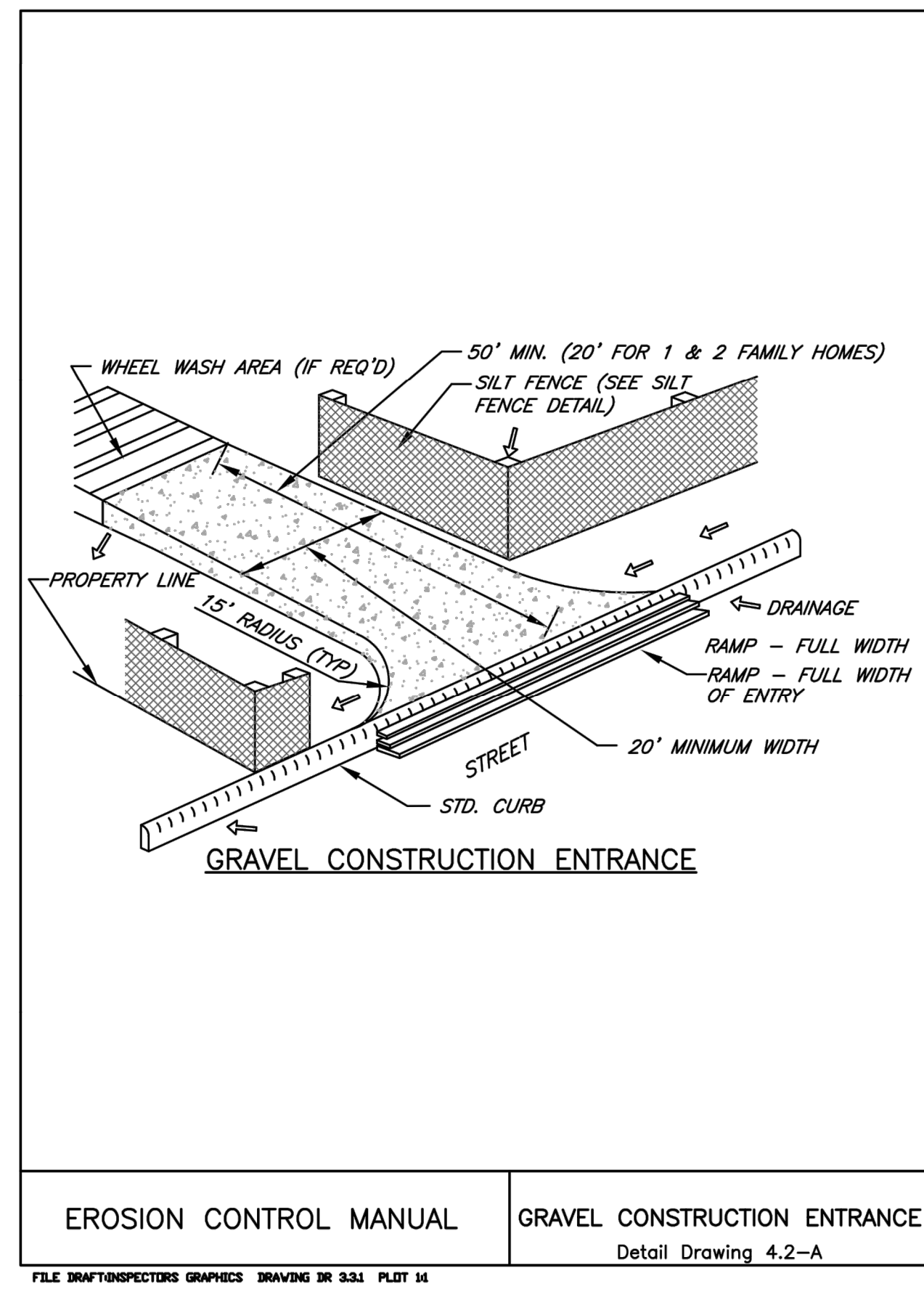
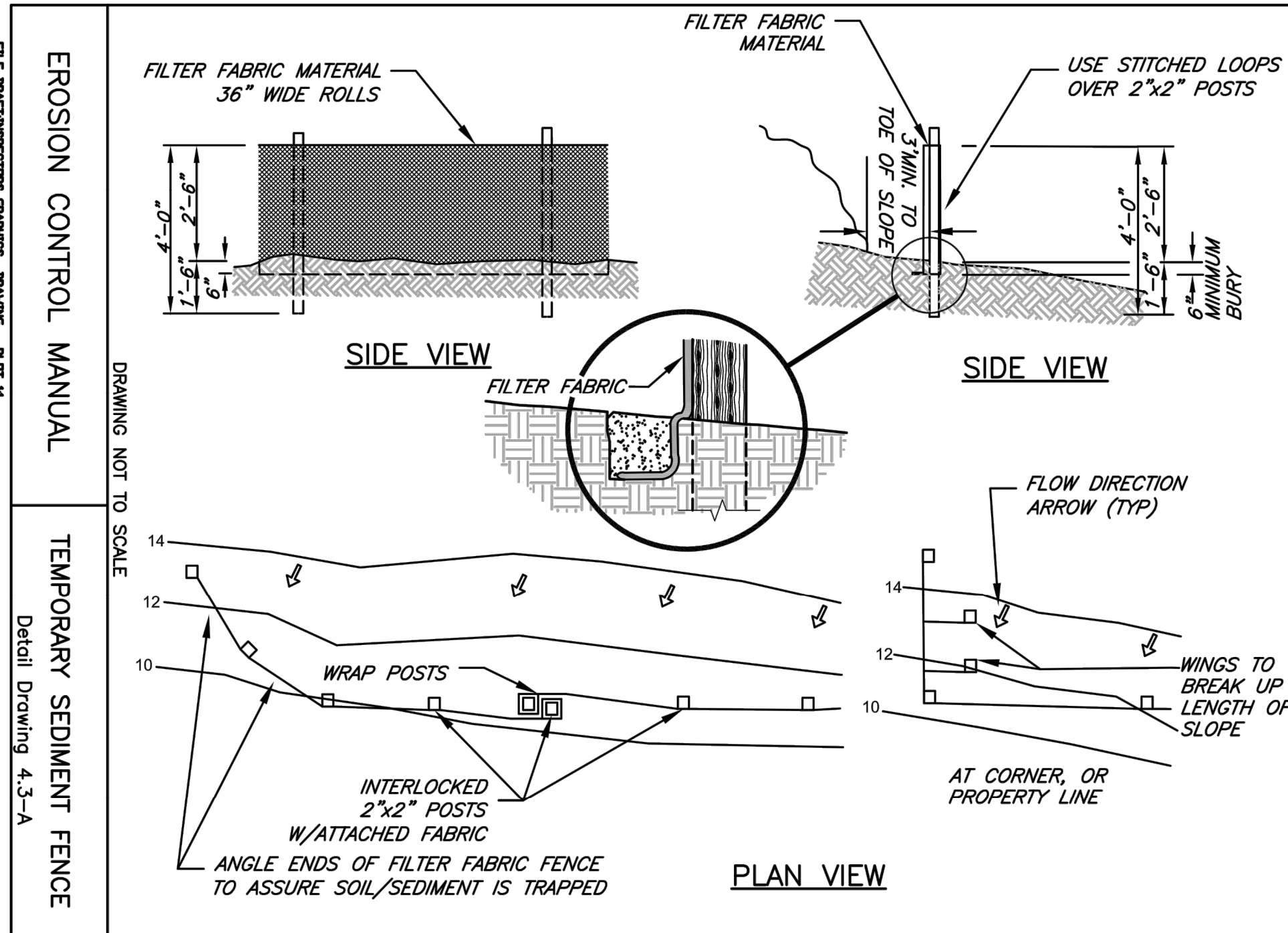


**WEST PROPERTY TASS 2**

FINAL LANDSCAPING AND STABILIZATION EROSION AND SEDIMENT CONTROL PLAN

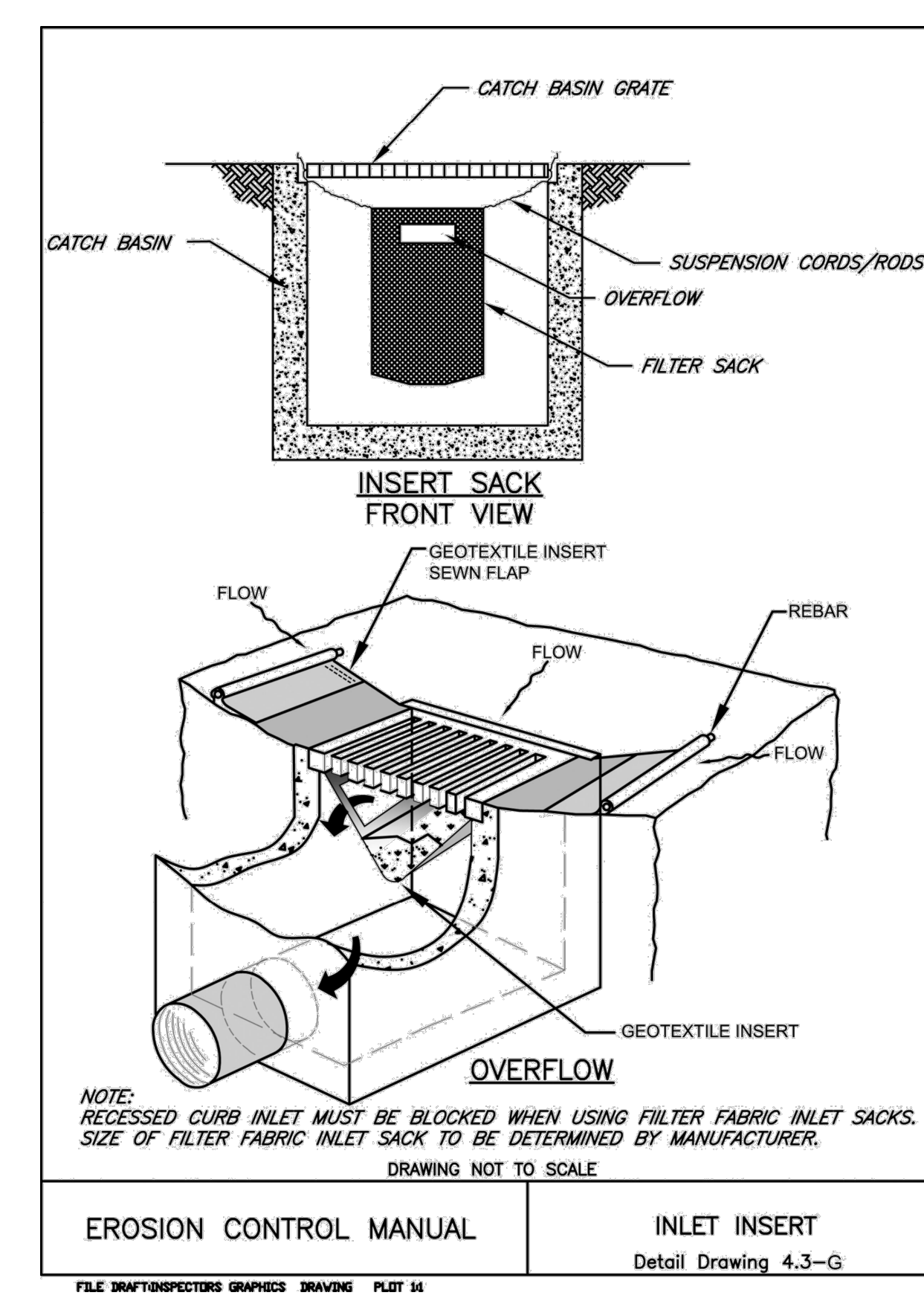
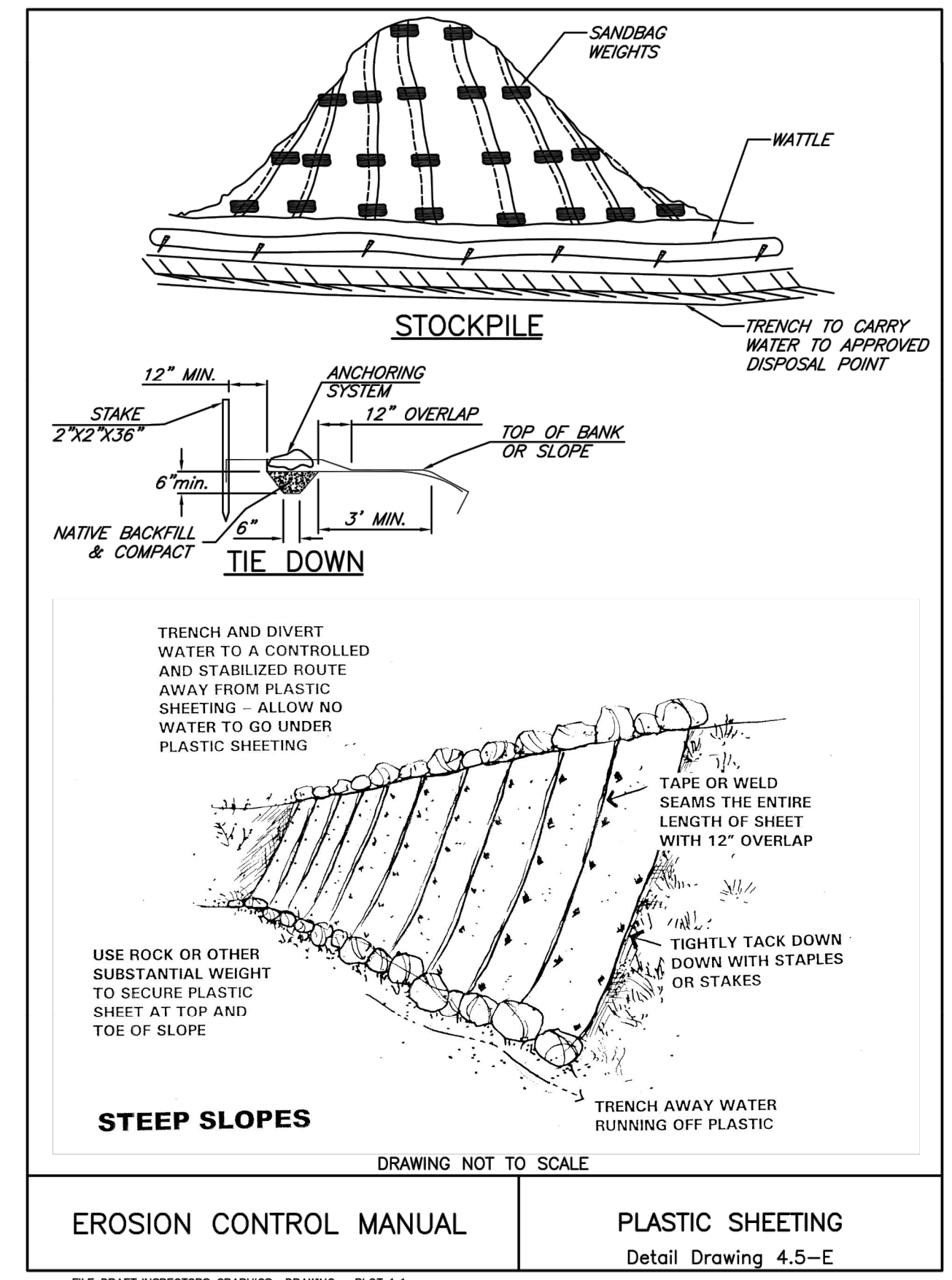
1/4 SECTION  
JOB NO. Exxxxx  
SHEET NO. CE04  
04 OF 05

P:\0493-017 TEMPORARY ALTERNATE SHELTER SITE 2\DWG\CIVL\1200-C\EXXXXXX\_CE05.DWG 3/5/2024 STEVE HANSEN



- Detail intended as an example. Detail must match PAC assumptions and/or design report.
  - Setbacks: 5' from property lines except next to right-of-way; 10' from building foundations.
  - Rock Gallery/Storage Layer, as required: Size per the PAC. Construct rock galleries of 3/4" washed drain rock overlain by a 3-4" filter layer of 1/4" No.10 washed angular aggregate. Alternative configurations and materials such as cellular storage systems, drainage mats, and non-standard aggregates may be used under the Performance Approach, with BES approval.
  - Overflow: Overflow elevation must allow for 4" of freeboard, minimum. Protect from debris and sediment with strainer or grate.
  - Blended Soil: Use BES standard soil blend for stormwater facilities (SWM Section 6.3) unless otherwise approved. Install minimum of 12" on native soil. Install minimum of 24" if there's a drainage layer or storage layer below the imported soil. WATERPROOF LINER: 30 MIL EPDM, HDPE OR APPROVED EQUIVALENT.
  - Vegetation: PLANT THE ENTIRE SURFACE AREA OF THE GRASSY SWALE WITH NATIVE GRASS OR SWALE SEED MIX TO PROVIDE 100% COVERAGE OF BOTH THE SWALE BOTTOM AND THE SIDE SLOPES. FOR BES-MAINTAINED FACILITIES, SELECT NATIVE WILDFLOWERS AND GRASSES THAT REQUIRE MINIMAL MOWING (I.E., NO MORE THAN ONCE OR TWICE ANNUALLY). BES DOES NOT ALLOW LAWN-TYPE AREAS IN BES-MAINTAINED FACILITIES AND EXCEPTIONS REQUIRE BES APPROVAL. GRASSY SWALES IN ENVIRONMENTAL ZONES MUST MEET REQUIREMENTS ESTABLISHED BY PCC TITLE 33 FOR GRASS SPECIES IN ENVIRONMENTAL ZONES.
  - Entrance Erosion Control: Install river rock, flagstone, or similar to dissipate the energy of incoming water at entrances and ends of downspout extensions.
  - FLOW SPREADER: INSTALL A FLOW-SPREADING DEVICE AT THE INLET TO DISTRIBUTE FLOWS EVENLY ACROSS THE BOTTOM OF THE SWALE. IN SWALES WITH A BOTTOM WIDTH GREATER THAN 6 FT, INSTALL A FLOW SPREADER AT LEAST EVERY 50 FT.
  - Inspections: Call BDS IVR Inspection Line, (503) 823-7000, request 487. 3 inspections required.
- CONSTRUCTION REQUIREMENTS**  
 Mark the location of future facilities, and fence or cover facility locations after excavation. Do not allow vehicular traffic, foot traffic, material storage, or heavy equipment within 10 feet of the infiltration area except as needed to excavate, grade, and construct the facility. Do not allow entry of runoff or sediment during construction.
- SEED NATIVE GRASS MIXES IN THE SWALE FLOW PATH. APPLY SEED AT THE RATES SPECIFIED BY THE SUPPLIER. PLANTS MUST BE ESTABLISHED BY THE TIME THE FACILITY IS COMPLETED AND AT LEAST 3 MONTHS AFTER SEEDING. ESTABLISH GRASSES AS SOON AS POSSIBLE AFTER THE SWALE IS COMPLETED AND BEFORE WATER IS ALLOWED TO ENTER THE FACILITY. DO NOT ALLOW ENTRY OF CONCENTRATED STORMWATER FLOWS UNTIL THE VEGETATION IS FULLY ESTABLISHED.
- UNLESS VEGETATION IS ESTABLISHED PRIOR TO COMPLETION OF CONSTRUCTION, INSTALL BIODEGRADABLE EROSION CONTROL MATTING THAT IS APPROPRIATE FOR LOW-VELOCITY FLOWS (APPROXIMATELY 1 FT/S) IN THE FLOW PATH BEFORE ALLOWING WATER INTO THE FACILITY.

**GRASSY SWALE DETAIL**  
 NTS  
 CITY OF PORTLAND  
**ENVIRONMENTAL SERVICES**



NO.	DATE	DESCRIPTION	APPD.

XREF(S) USED:	ROTATION ANGLE: 0d0'0"	DESIGNED BY:	DATE APPROVED:
CONSTRUCTED BY:	PROJECT COMPLETED:	DRAWN BY:	ENGR. SUPV.:
MAP CORRECTED BY:	CHECKED BY:	CHECKED BY:	ENGR. DIV. MGR.:
DRAWING NAME: EXXXXXX_CE05.dwg		BES DESIGN LEAD:	CONST. DIV. MGR.:

