



State of Oregon Department of Environmental Quality

Appendix E - Maps for Updates to Redband Trout Use

May 2023

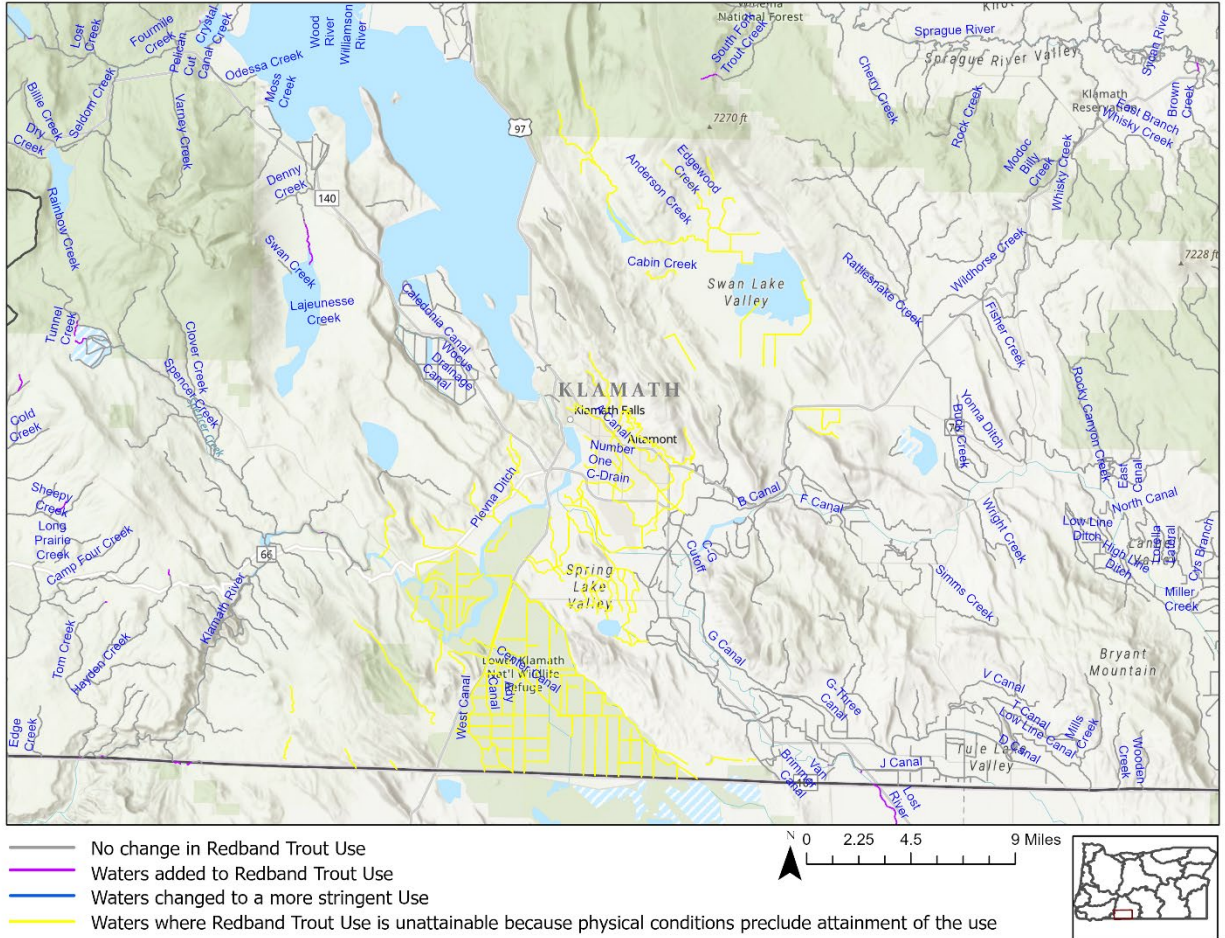


Figure E-0-1. Waters where Redband Trout Use is unattainable due to physical conditions, Klamath River Basin.

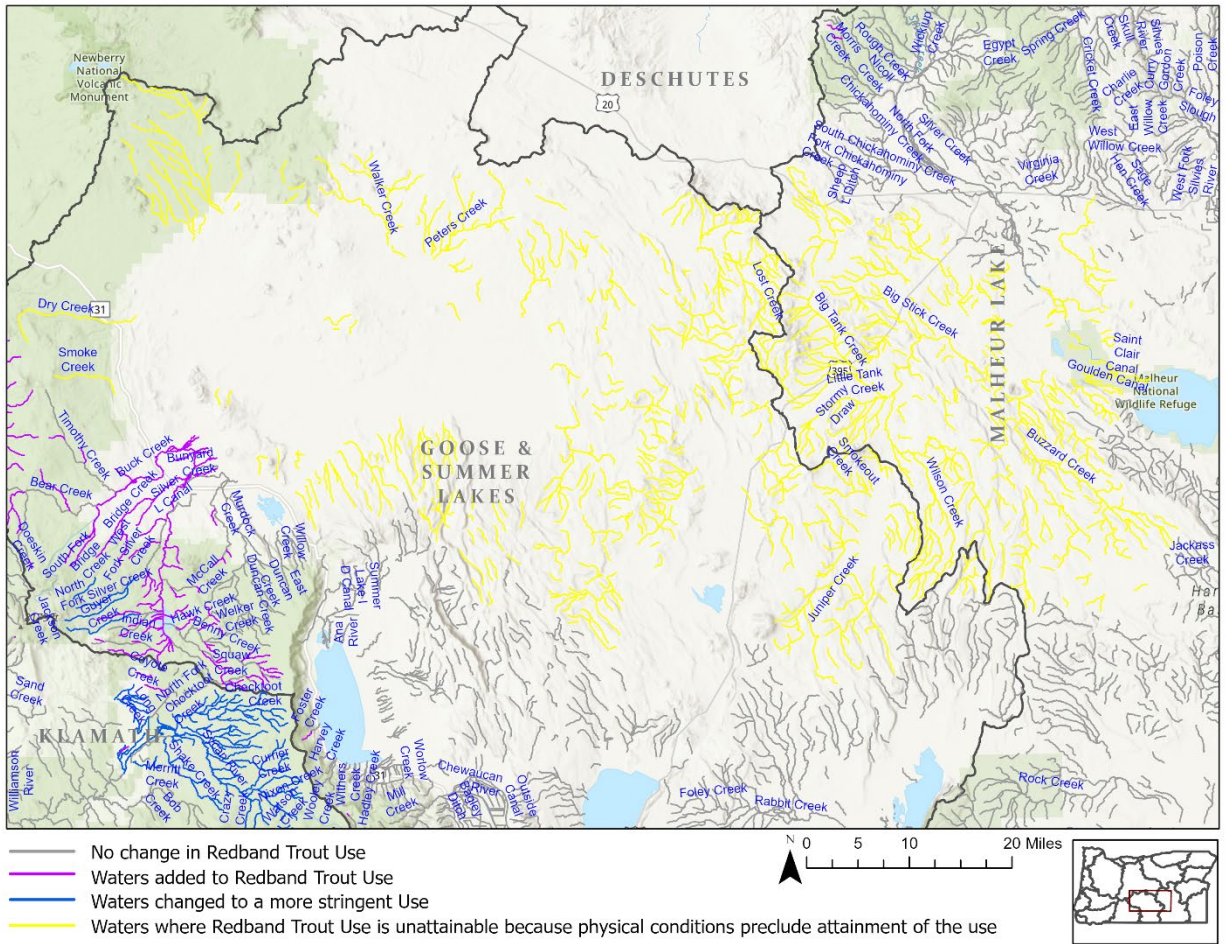


Figure E-0-2. Waters where Redband Trout Use is unattainable due to physical conditions, Goose and Summer Lakes and Northern Malheur Lakes Basin.

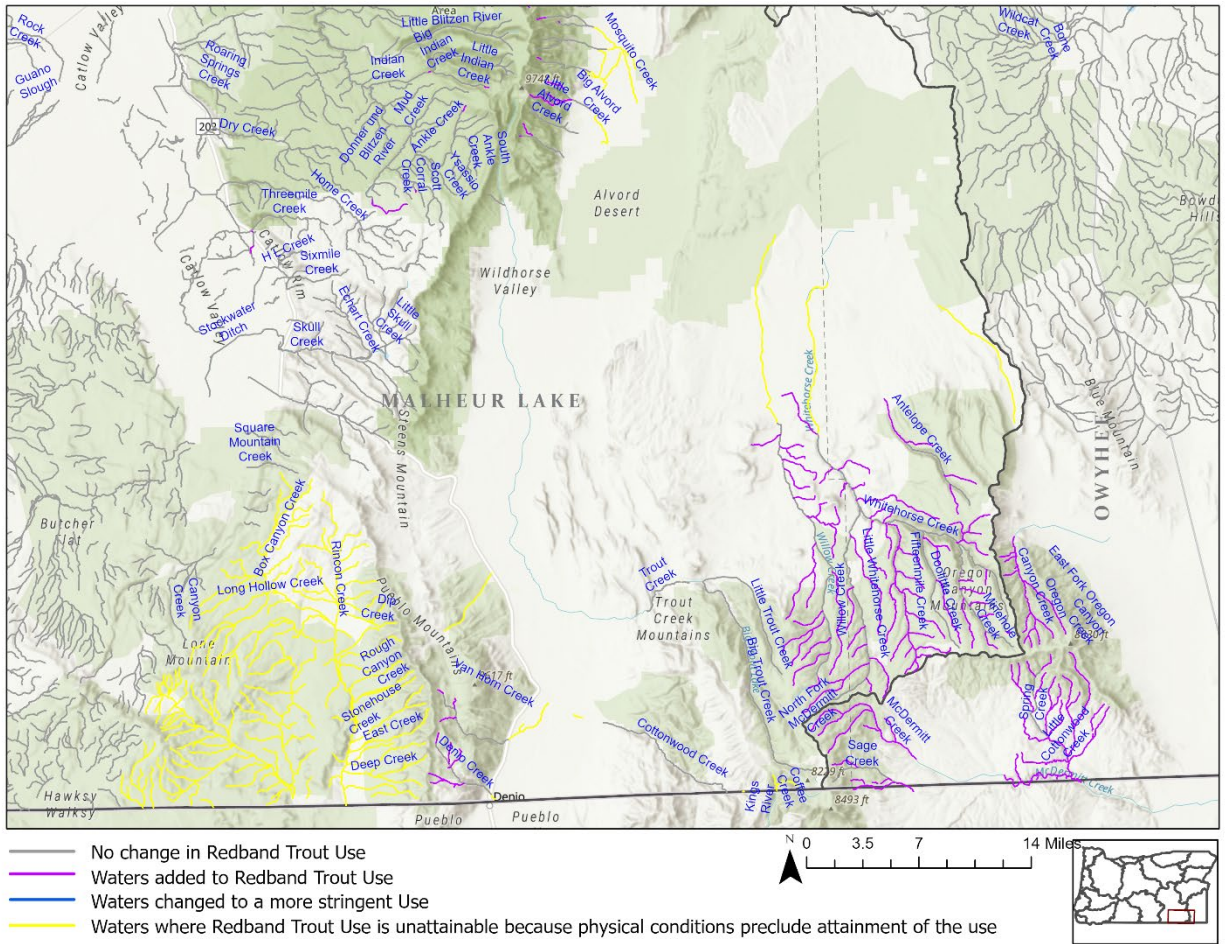


Figure E-0-3. Waters where Redband Trout Use is unattainable due to physical conditions, Southern Malheur Lakes Basin.

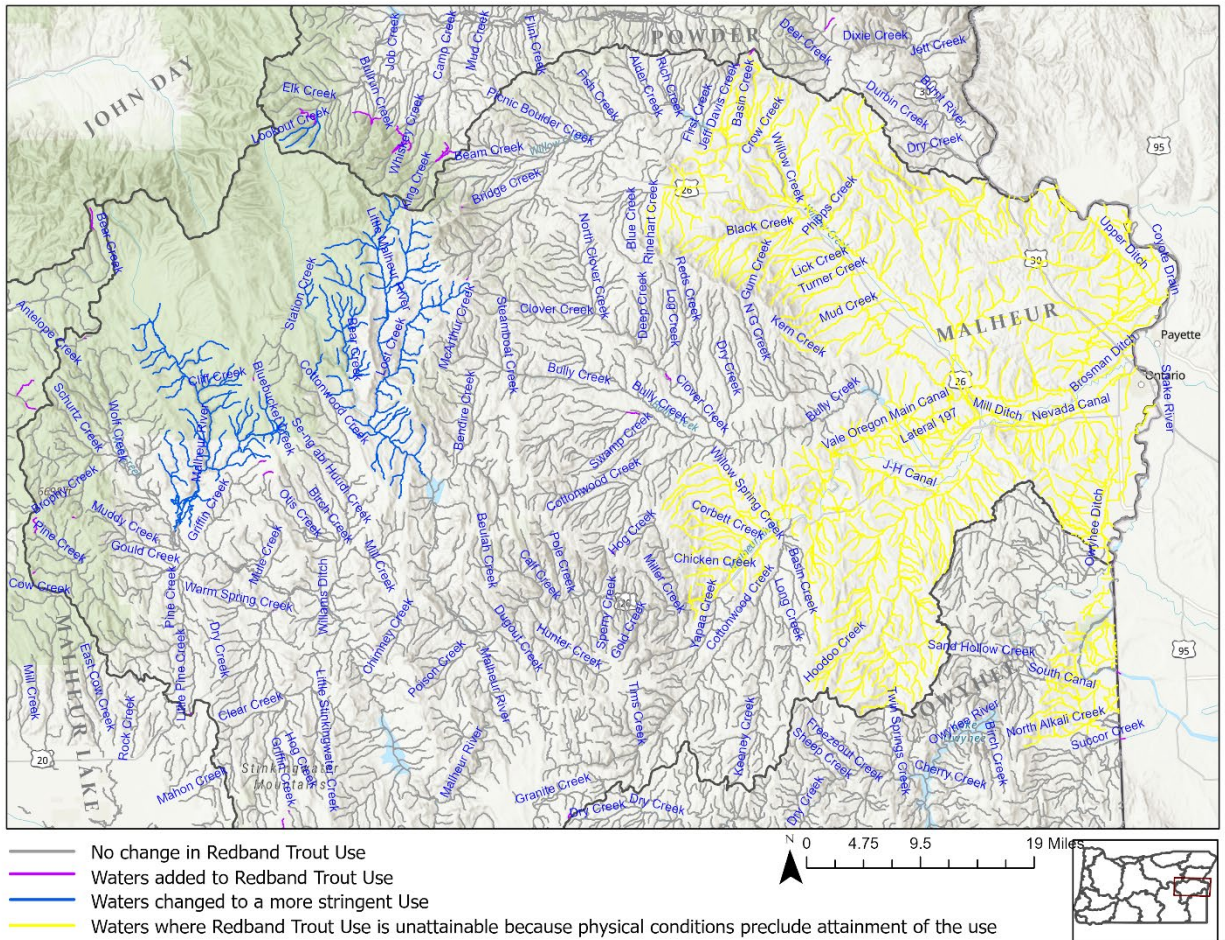


Figure E-4. Waters where Redband Trout Use is unattainable due to physical conditions, Malheur River and Owyhee Basins.

Translation or other formats

[Español](#) | [한국어](#) | [繁體中文](#) | [Русский](#) | [Tiếng Việt](#) | [العربية](#)

800-452-4011 | TTY: 711 | deqinfo@deq.oregon.gov

Non-discrimination statement

DEQ does not discriminate on the basis of race, color, national origin, disability, age or sex in administration of its programs or activities. Visit DEQ's [Civil Rights and Environmental Justice page](#).