



State of Oregon Department of Environmental Quality

Discussion Document: Maps of Metropolitan Planning Organization Boundaries and Employer Distribution Commute Options Rulemaking 2021

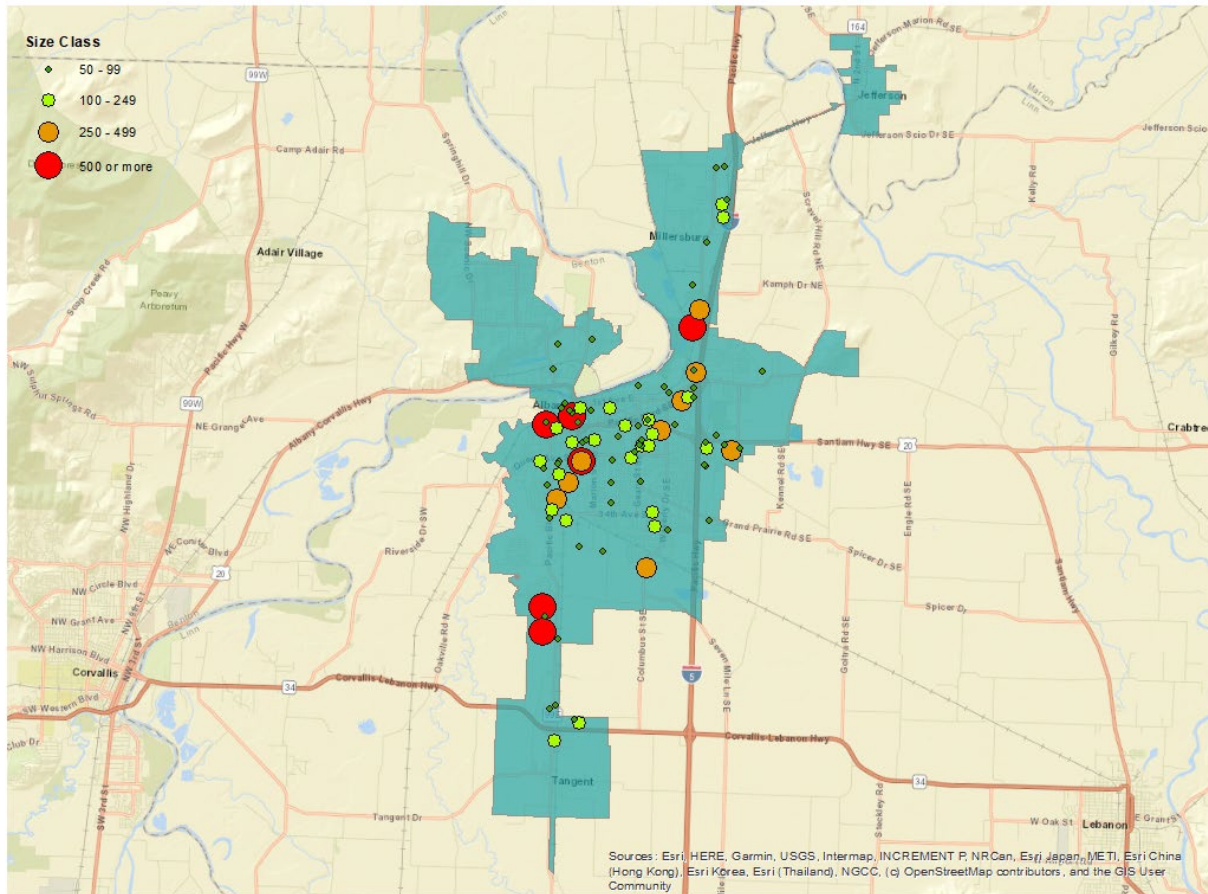
Advisory Committee Meeting 4, Nov. 18, 2022

This document is a compilation of maps showing Metropolitan Planning Organization boundaries for MPOs wholly within Oregon, excepting the Portland metropolitan area. The maps also show the distribution of employers, categorized by size based on numbers of employees. DEQ thanks the Oregon Dept. of Transportation and the Oregon Employment Department for assembling this information. DEQ presents this information to the rulemaking advisory committee for discussion purposes at its meeting on Nov. 18, 2022.

Albany MPO	2
Corvallis MPO:	3
Eugene-Springfield MPO.....	4
Medford MPO	5
Middle Rogue MPO	6
Salem-Keizer MPO.....	7

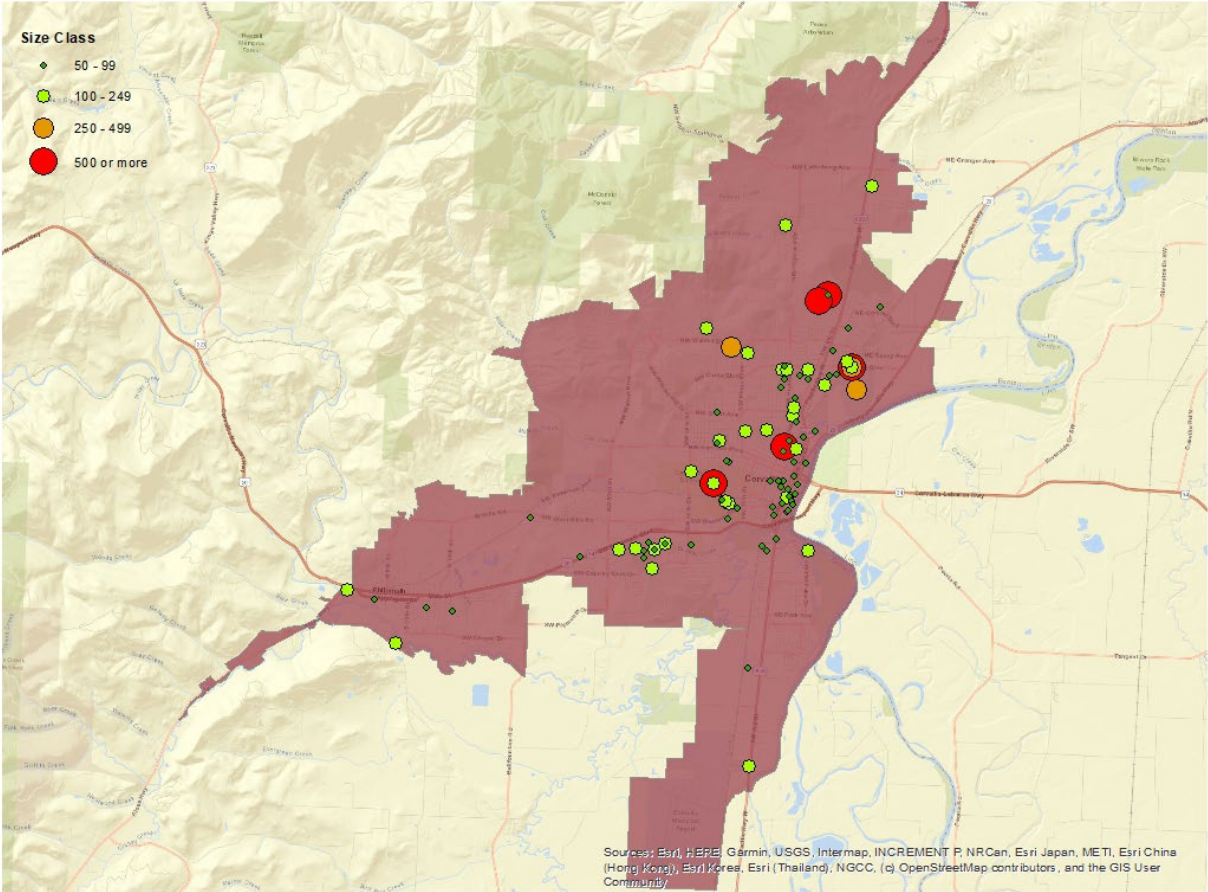
Albany MPO

Establishments by Size Class Inside Albany MPO



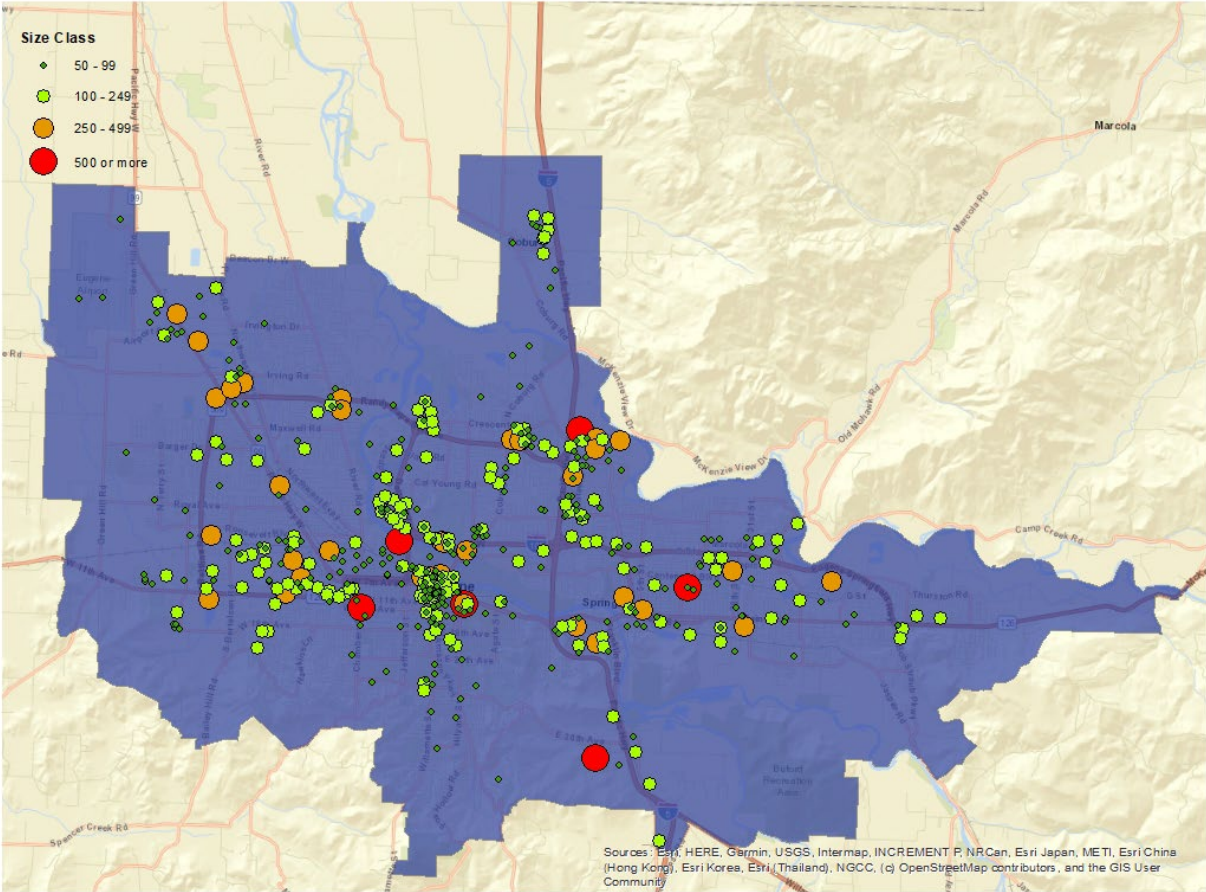
Corvallis MPO:

Establishments by Size Class Inside Corvallis MPO



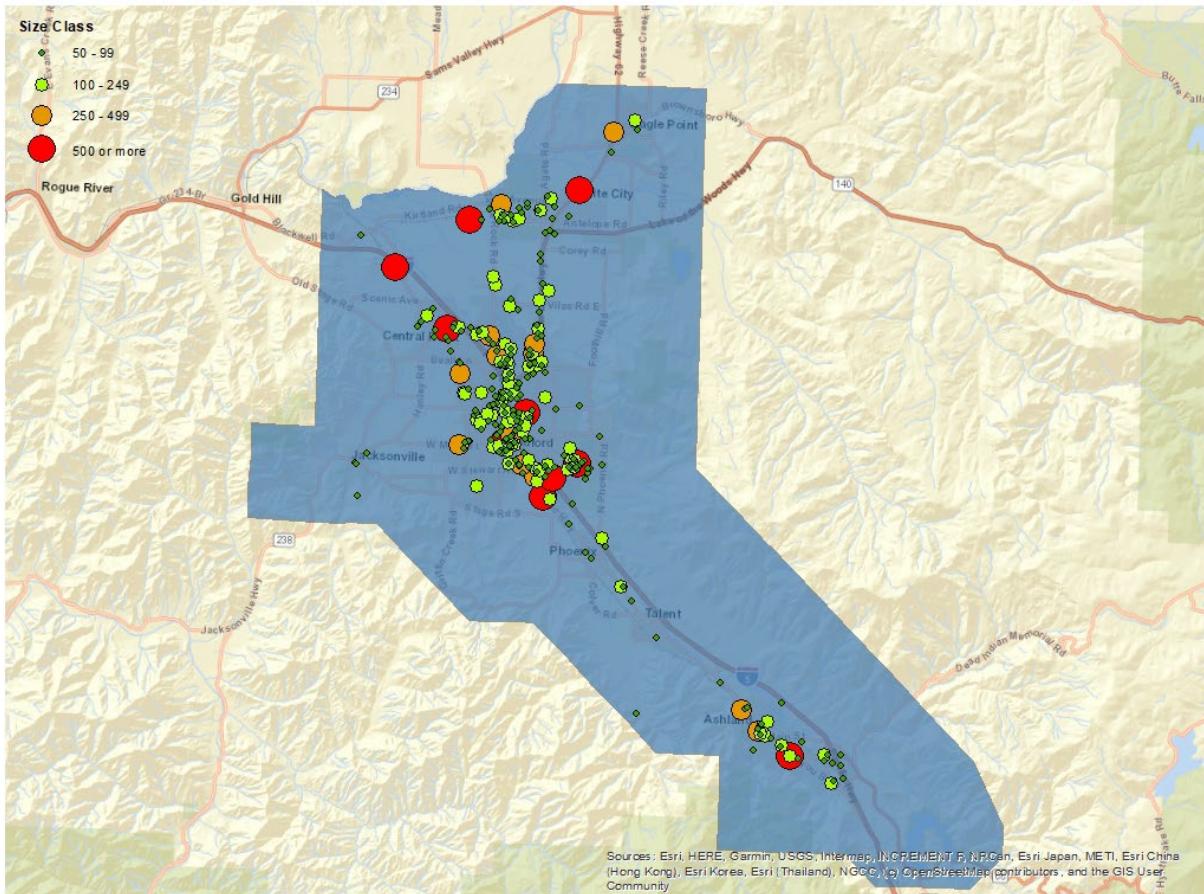
Eugene-Springfield MPO

Establishments by Size Class Inside Eugene/Springfield MPO



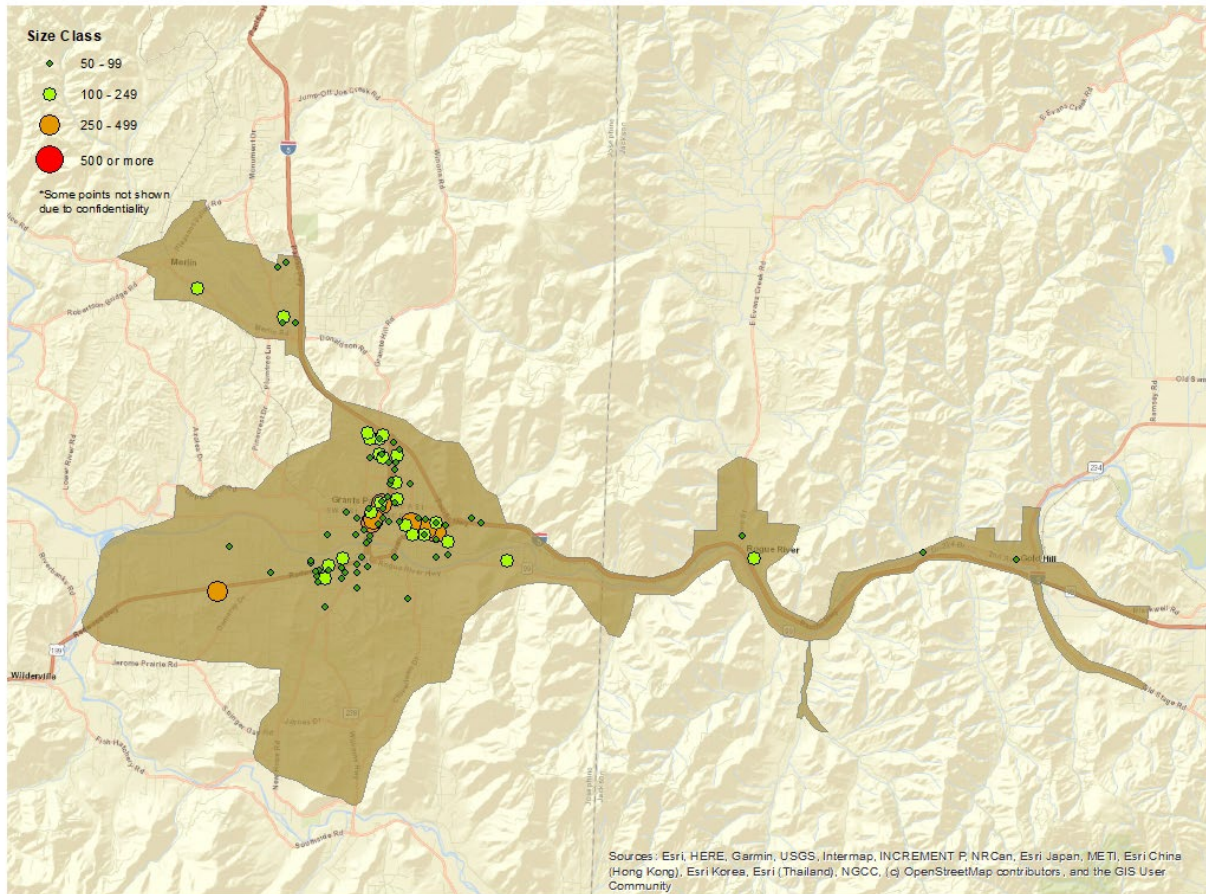
Medford MPO

Establishments by Size Class Inside Medford MPO



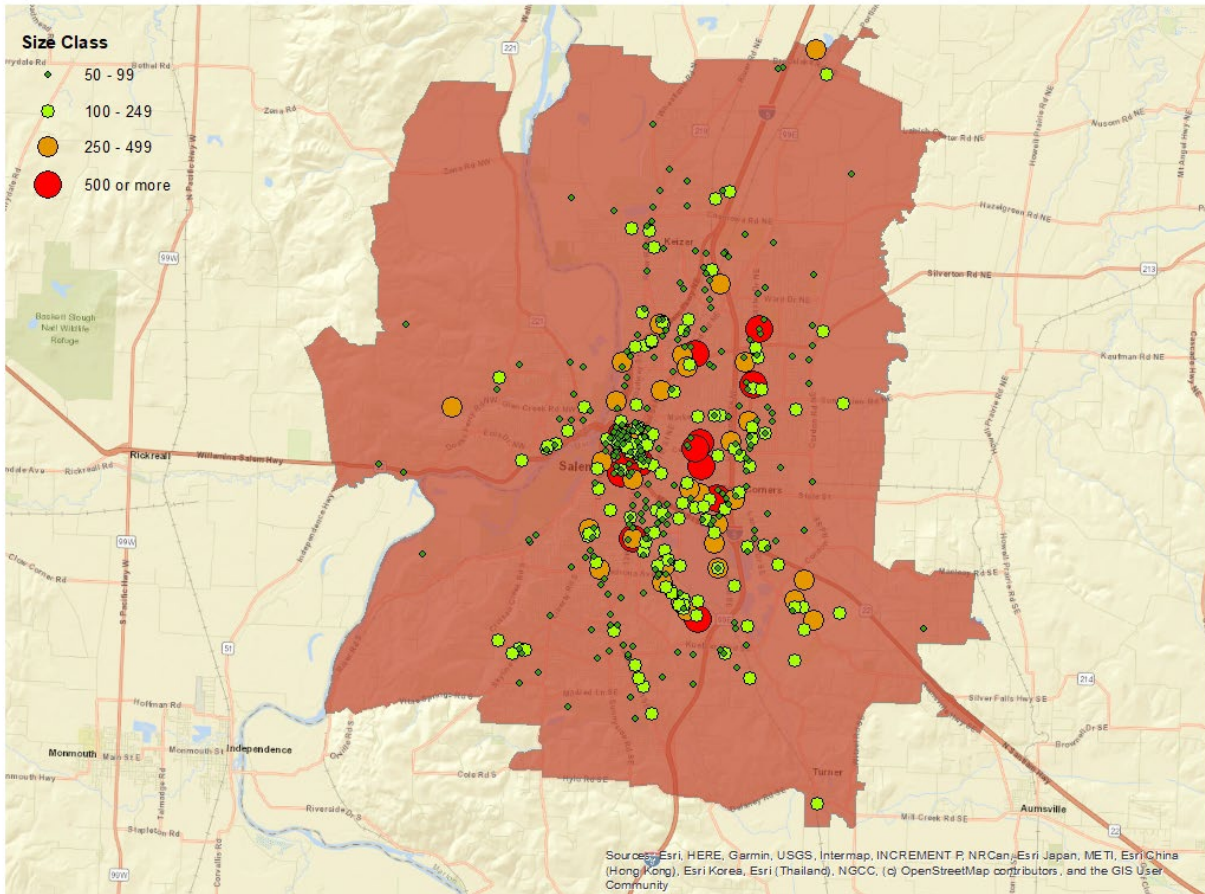
Middle Rogue MPO

Establishments by Size Class Inside Middle Rogue MPO



Salem-Keizer MPO

Establishments by Size Class Inside Salem-Keizer MPO



Alternative formats

DEQ can provide documents in an alternate format or in a language other than English upon request. Call DEQ at 800-452-4011 or email deqinfo@deq.state.or.us.