



State of Oregon Department of Environmental Quality

Appendix C – Supporting Maps for Updates to Core Cold Water Use

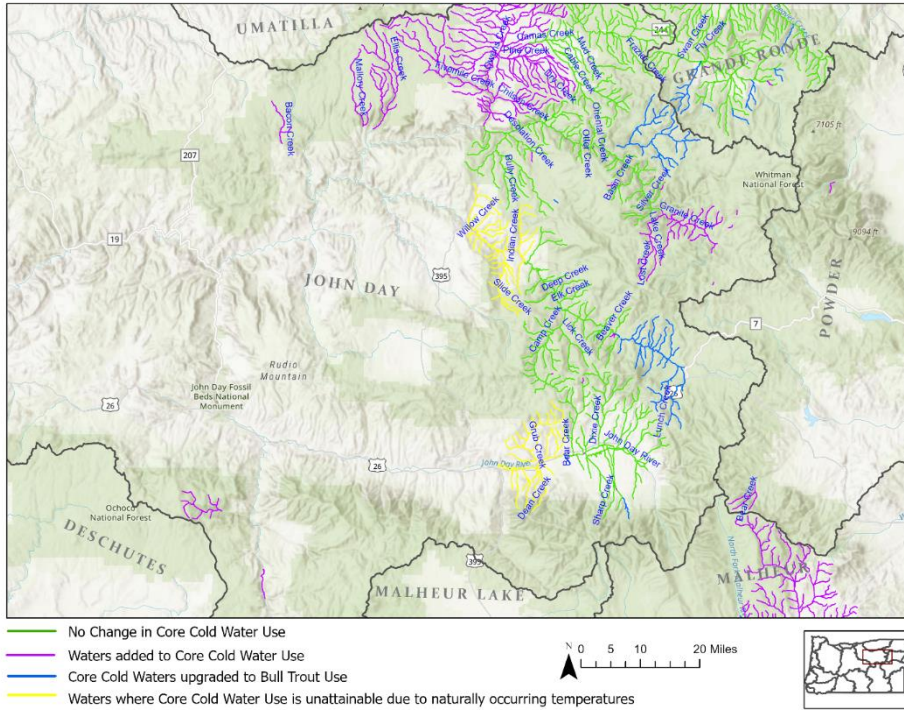


Figure C-1. Waters where Core Cold Water Use is unattainable due to naturally occurring temperatures, John Day Basin

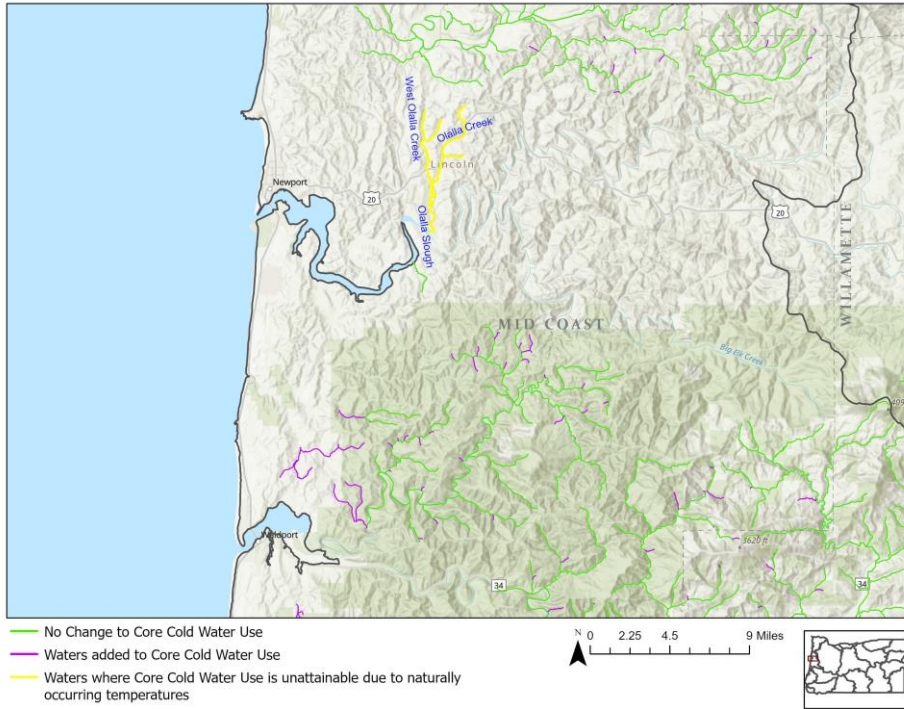


Figure C-2. Waters where Core Cold Water Use is unattainable due to naturally occurring temperatures, Mid Coast Basin

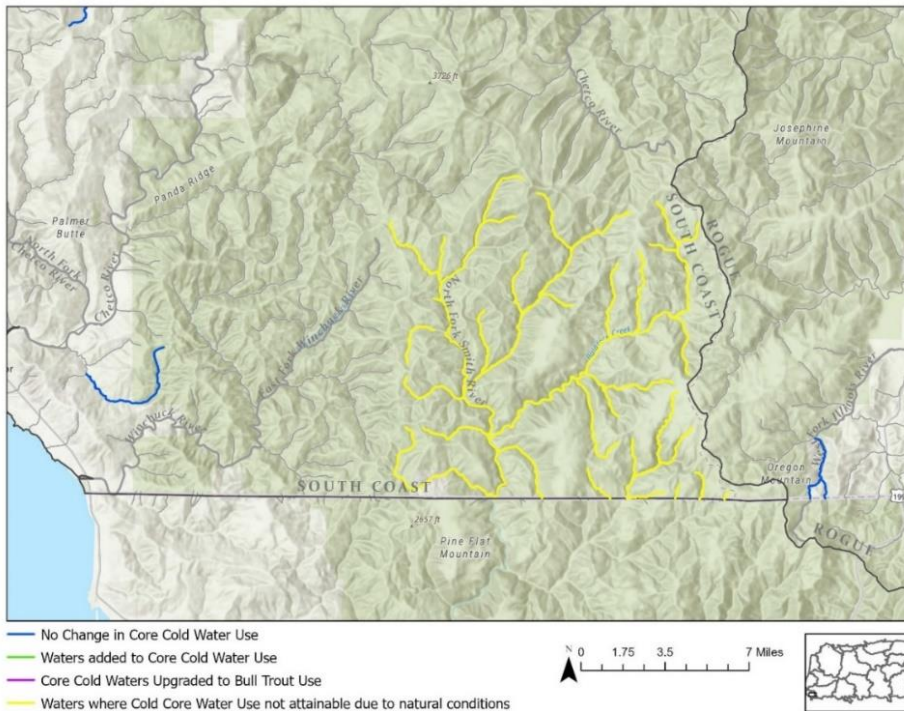


Figure C-3. Waters where Core Cold Water Use is unattainable due to naturally occurring temperatures, North Fork Smith River and tributaries, South Coast Basin

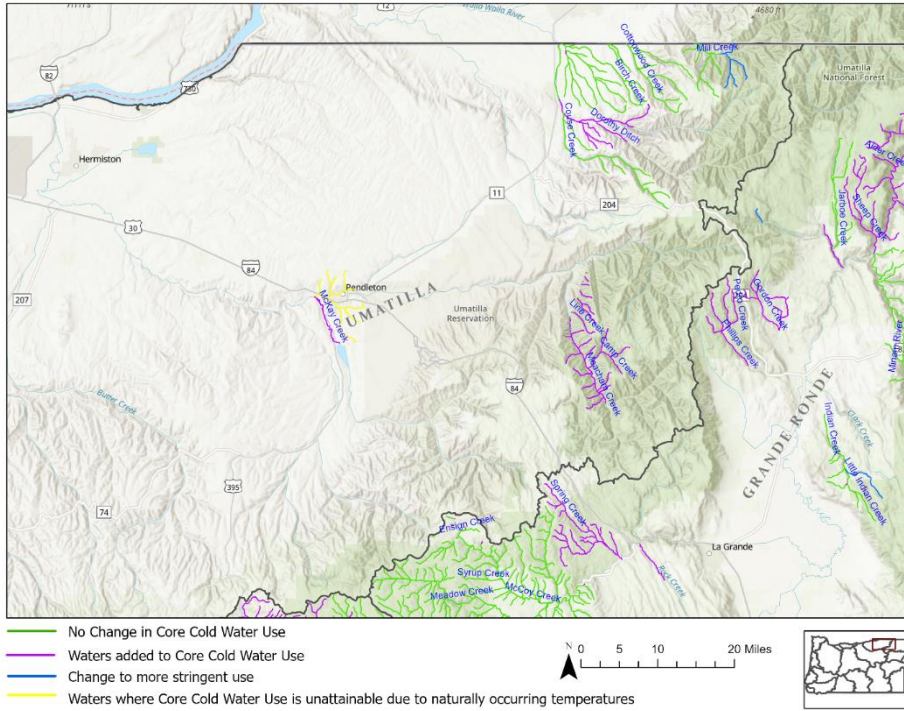


Figure C-4. Waters where Core Cold Water Use is unattainable due to naturally occurring temperatures, Umatilla Basin

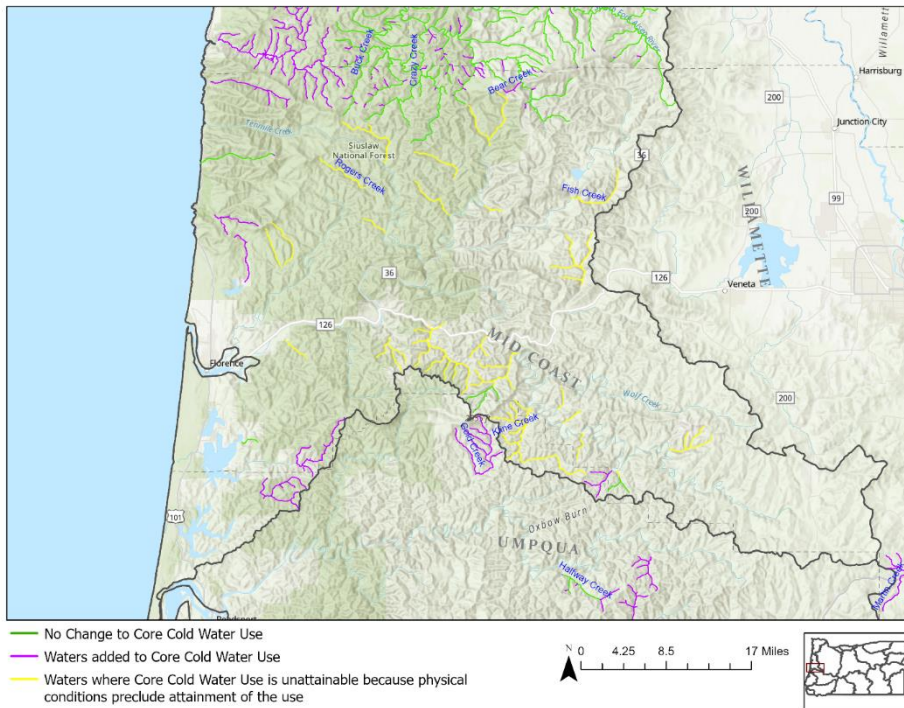


Figure C-5. Waters where Core Cold Water Use is unattainable because physical conditions preclude attainment of the use, Mid Coast Basin.

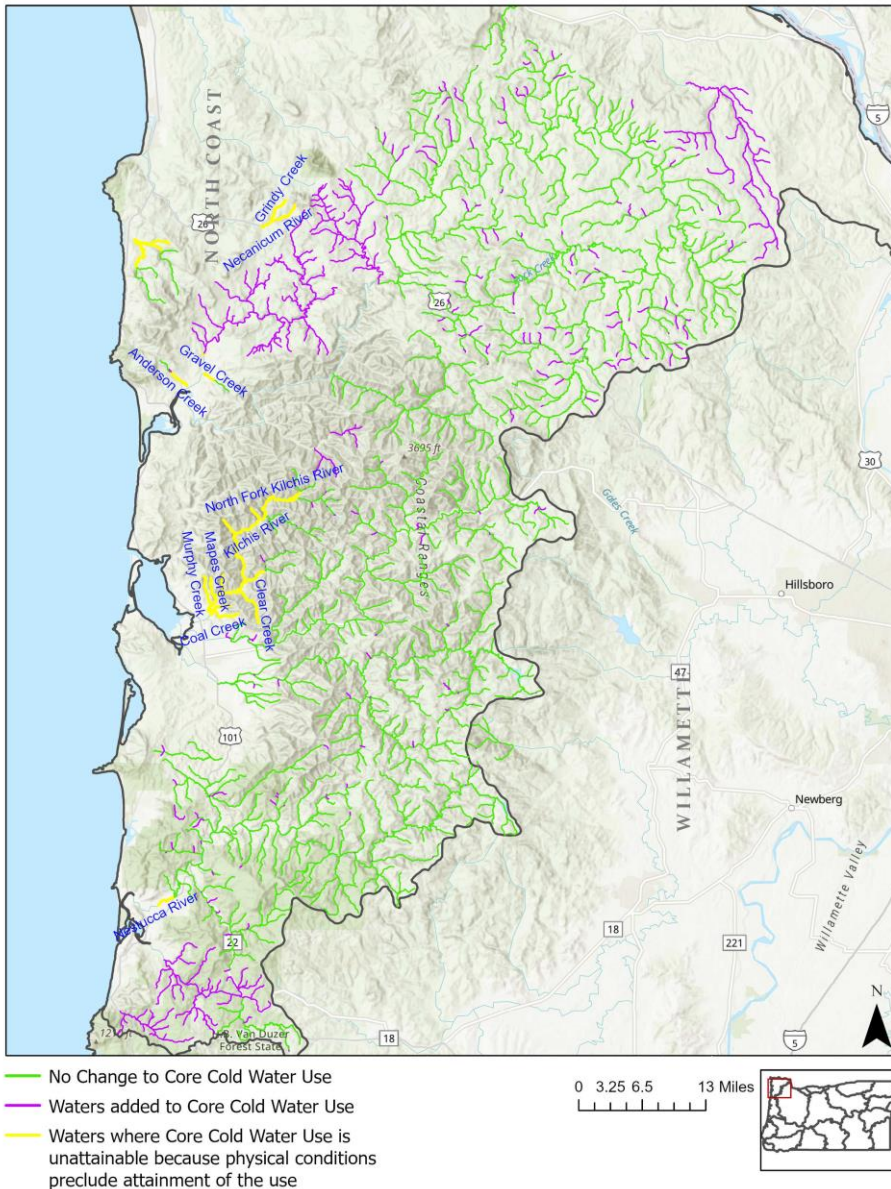


Figure C-6. Waters where Core Cold Water Use is unattainable because physical conditions preclude attainment of the use, North Coast Basin.

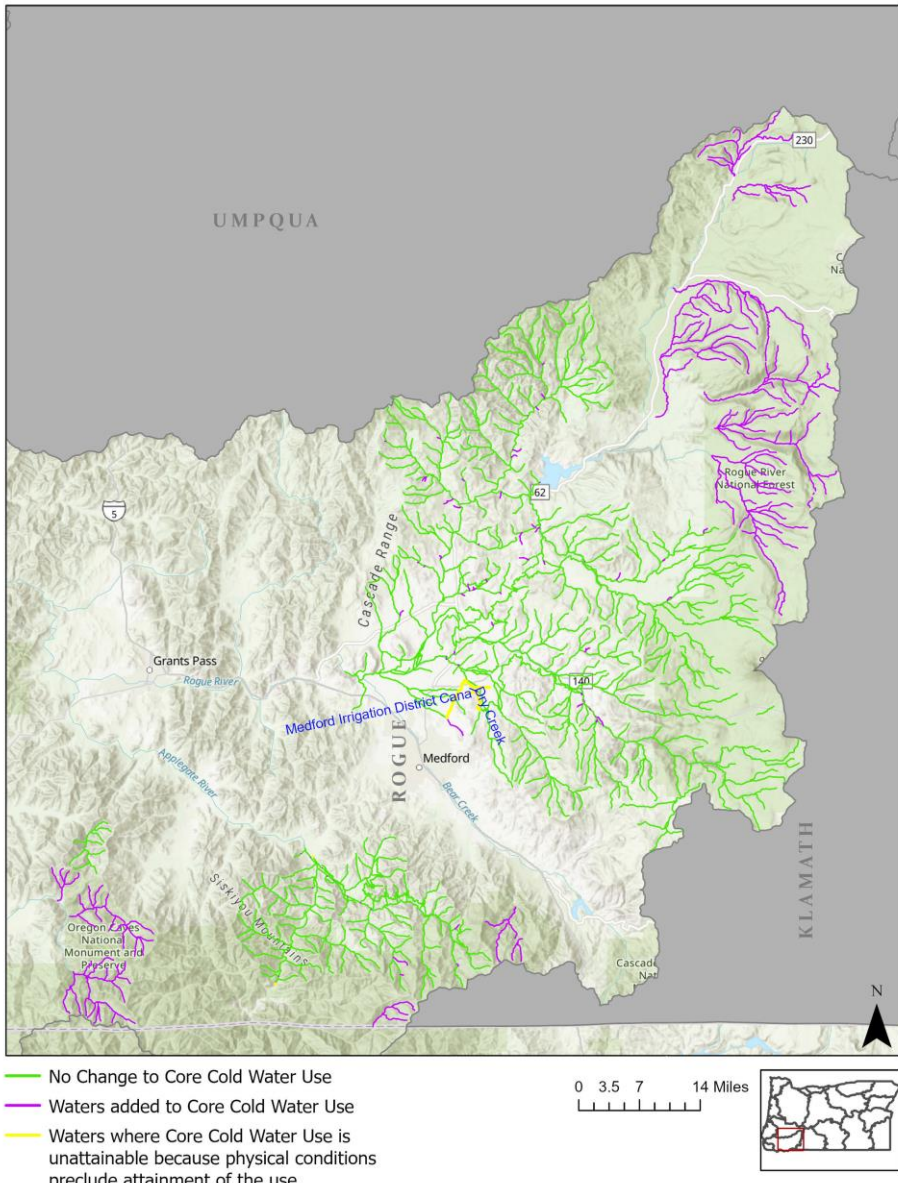


Figure C-7. Waters where Core Cold Water Use is unattainable because physical conditions preclude attainment of the use, Rogue River Basin.

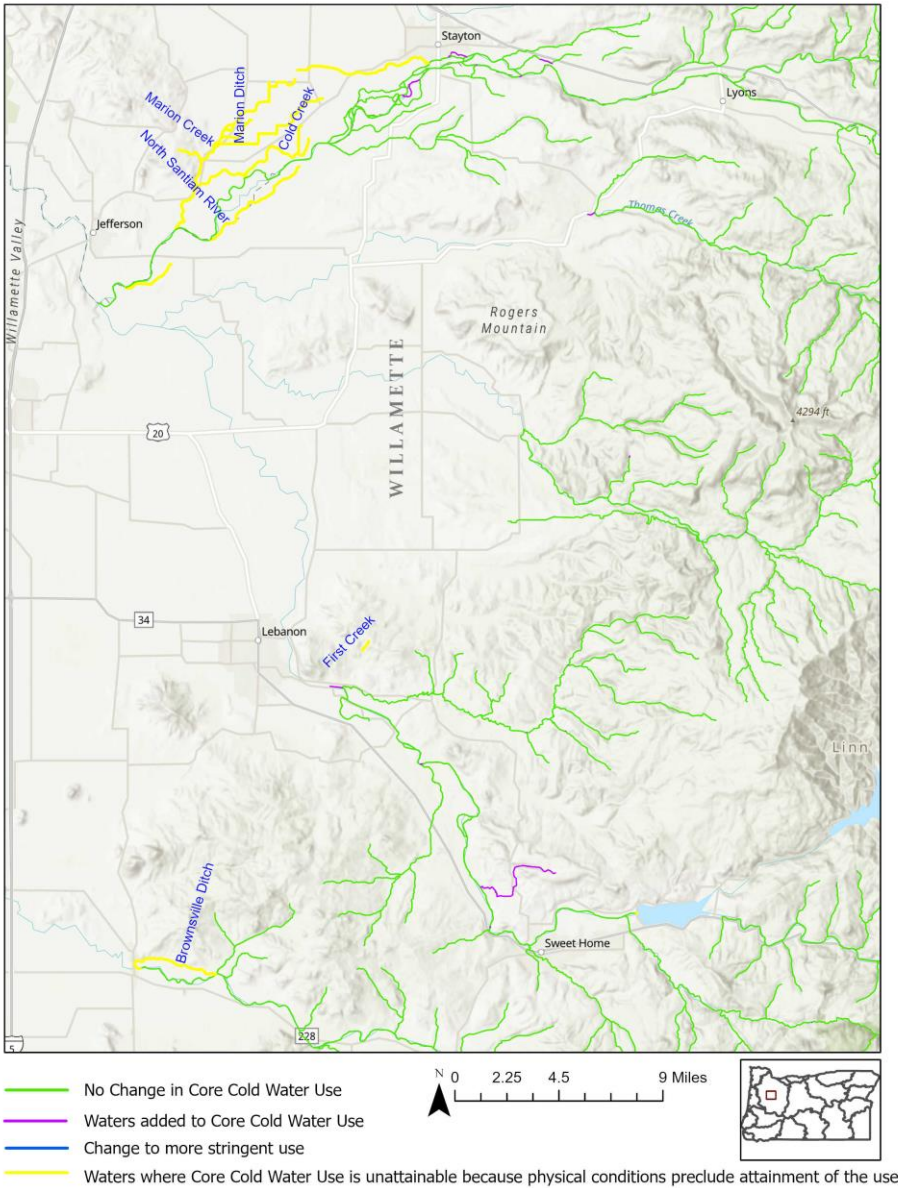


Figure C-8. Waters where Core Cold Water Use is unattainable due to physical conditions, Willamette River Basin.

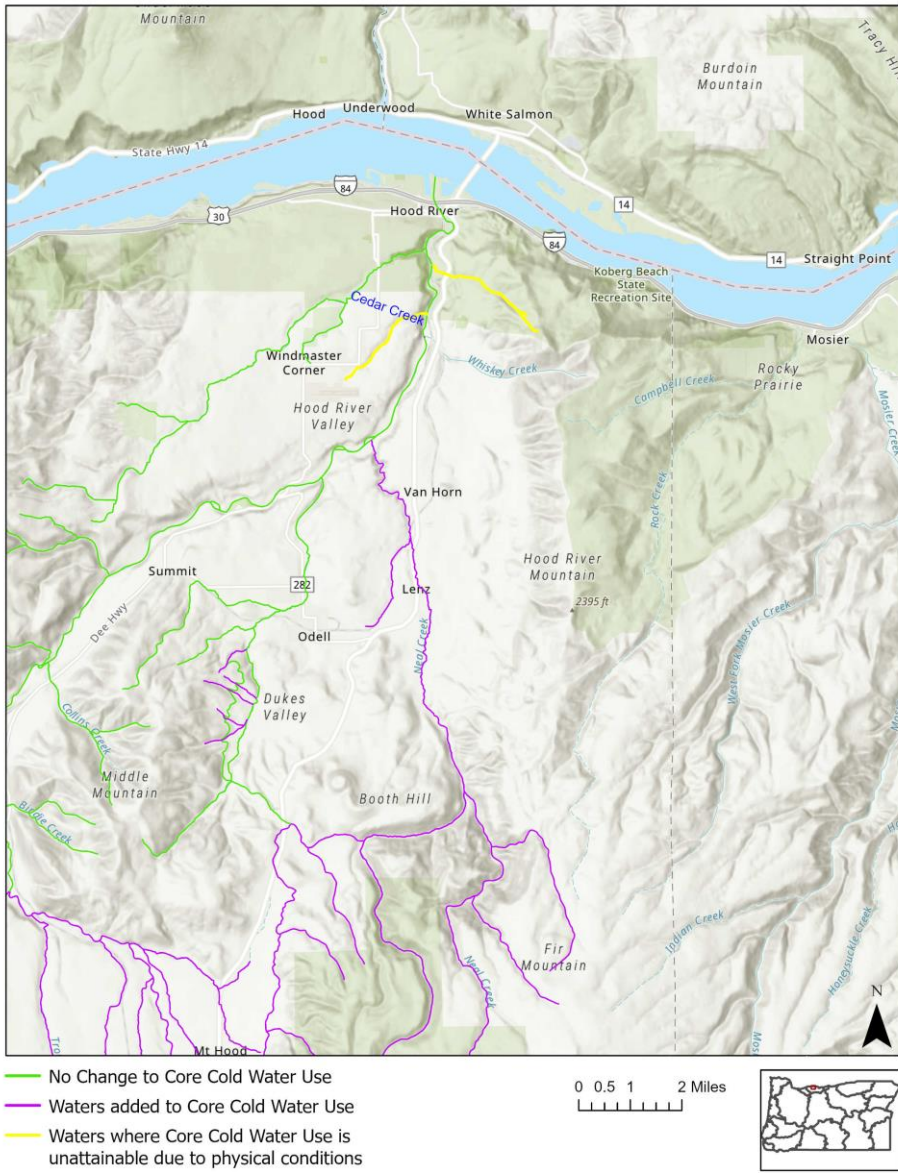


Figure C-9. Waters where Core Cold Water Use is unattainable due to physical conditions, Hood River Basin.

Table C-1. Excerpt from ODFW Timing Table, John Day River above Canyon Creek, indicating Bull Trout FMO Use Does Not Occur During July and August. See Figure C-6.

Waterway ID: JohnDay01													
Life Stage/Activity/Species	Jan	Feb	Mar	Apr	May	Jun	Jul	Aug	Sep	Oct	Nov	Dec	
Adult Fluvial or Adfluvial Migration													
Bull Trout Fluvial													
Westslope Cutthroat Trout Fluvial													
Redband (Native Rainbow) Trout													
Western Brook Lamprey - Resident													
		Represents periods of peak use based on professional opinion.											
		Represents lesser level of use based on professional opinion.											
		Represents periods of presence, either with no level of use OR uniformly distributed level of use indicated											

Table C-2. Excerpts from ODFW Timing Table, Middle Fork John Day River above US Highway 395, indicating Bull Trout FMO Use Does Not Occur During July and August. See Figure C-6.

Waterway ID: JohnDay03													
Life Stage/Activity/Species	Jan	Feb	Mar	Apr	May	Jun	Jul	Aug	Sep	Oct	Nov	Dec	
Adult Fluvial or Adfluvial Migration													
Bull Trout Fluvial													
Red Band Trout Fluvial													
Western Brook Lamprey - Resident													
		Represents periods of peak use based on professional opinion.											
		Represents lesser level of use based on professional opinion.											
		Represents periods of presence, either with no level of use OR uniformly distributed level of use indicated											

Table C-3. Excerpts from ODFW Timing Table, Umatilla River, Cayuse to Mouth, indicating Bull Trout FMO Use Does Not Occur During July and August. See Figure C-7.

Timing Unit ID: 10202													
Life Stage/Activity/Species	Jan	Feb	Mar	Apr	May	Jun	Jul	Aug	Sep	Oct	Nov	Dec	
Adult Fluvial or Adfluvial Migration													
Redband (Native Rainbow) Trout													
Bull Trout													
		Represents periods of peak use based on professional opinion.											
		Represents lesser level of use based on professional opinion.											
		Represents periods of presence, either with no level of use OR uniformly distributed level of use indicated											

Translation or other formats

[Español](#) | [한국어](#) | [繁體中文](#) | [Русский](#) | [Tiếng Việt](#) | [العربية](#)

800-452-4011 | TTY: 711 | deqinfo@deq.oregon.gov

Non-discrimination statement

DEQ does not discriminate on the basis of race, color, national origin, disability, age or sex in administration of its programs or activities. Visit DEQ's [Civil Rights and Environmental Justice page](#).