

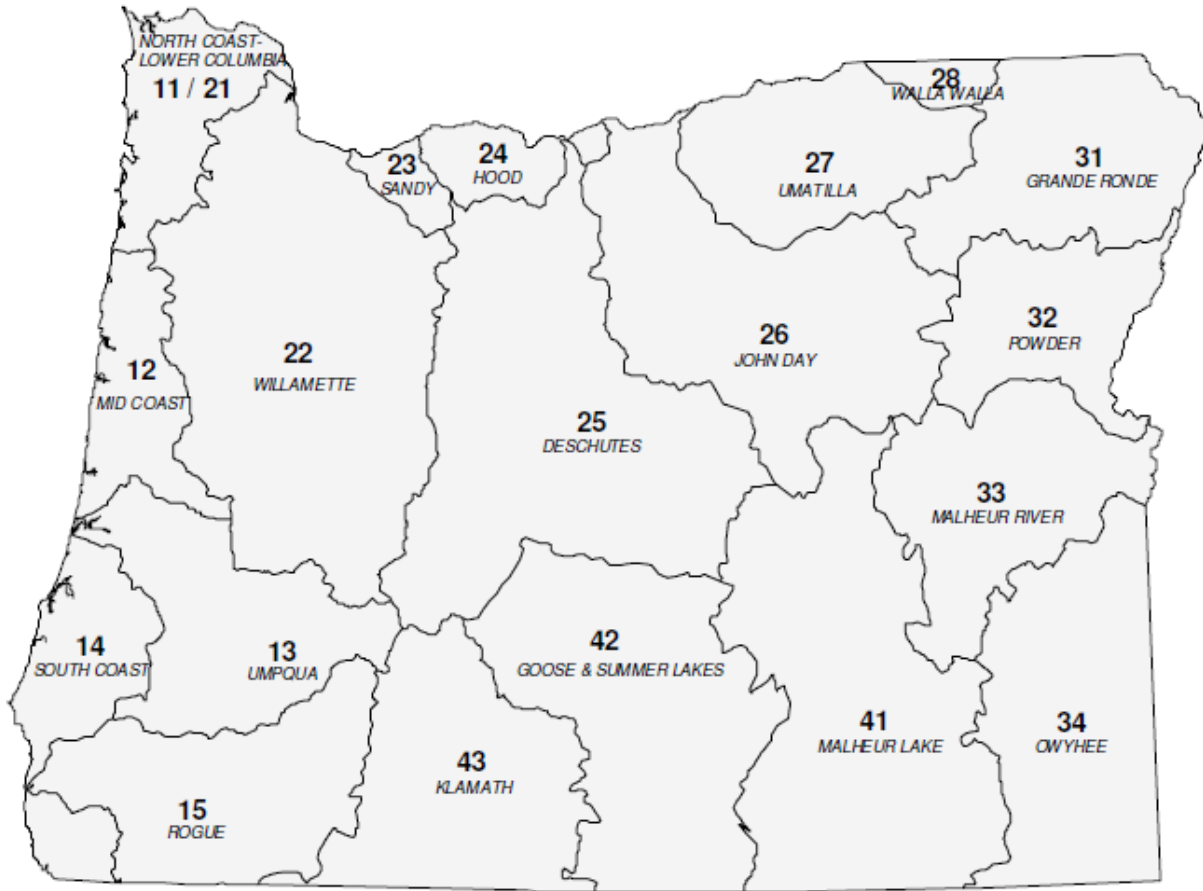


State of Oregon Department of Environmental Quality

**OAR 340-041-0230**

**Tables and Figures**

# Figure 1: Oregon Basin Index Map



Basin Name	Basin #	OAR #
DESCHUTES	25	340-041-0130
GOOSE & SUMMER LKS	42	340-041-0140
GRANDE RONDE	31	340-041-0151
HOOD	24	340-041-0160
JOHN DAY	26	340-041-0170
KLAMATH	43	340-041-0180
MALHEUR LAKE	41	340-041-0190
MALHEUR RIVER	33	340-041-0201
MD COAST	12	340-041-0220
NORTH COAST-LWR COL	11-21	340-041-0230
OWYHEE	34	340-041-0250
POWDER	32	340-041-0260
ROGUE	15	340-041-0271
SANDY	23	340-041-0286
SOUTH COAST	14	340-041-0300
UMATILLA	27	340-041-0310
UMPQUA	13	340-041-0320
WALLA WALLA	28	340-041-0330
WILLAMETTE	22	340-041-0340



**OAR 340-041-0230**  
**Table 230A**  
**Designated Beneficial Uses**  
**North Coast Basin**

Beneficial Uses	Estuaries & Adjacent Maine Waters	All Steams & Tributaries Thereto
Public Domestic Water Supply <sup>1</sup>		X
Private Domestic Water Supply <sup>1</sup>		X
Industrial Water Supply	X	X
Irrigation		X
Livestock Watering		X
Fish & Aquatic Life <sup>2</sup>	X	X
Wildlife & Hunting	X	X
Fishing	X	X
Boating	X	X
Water Contact Recreation	X	X
Aesthetic Quality	X	X
Hydro Power		
Commercial Navigation & Transportation	X	

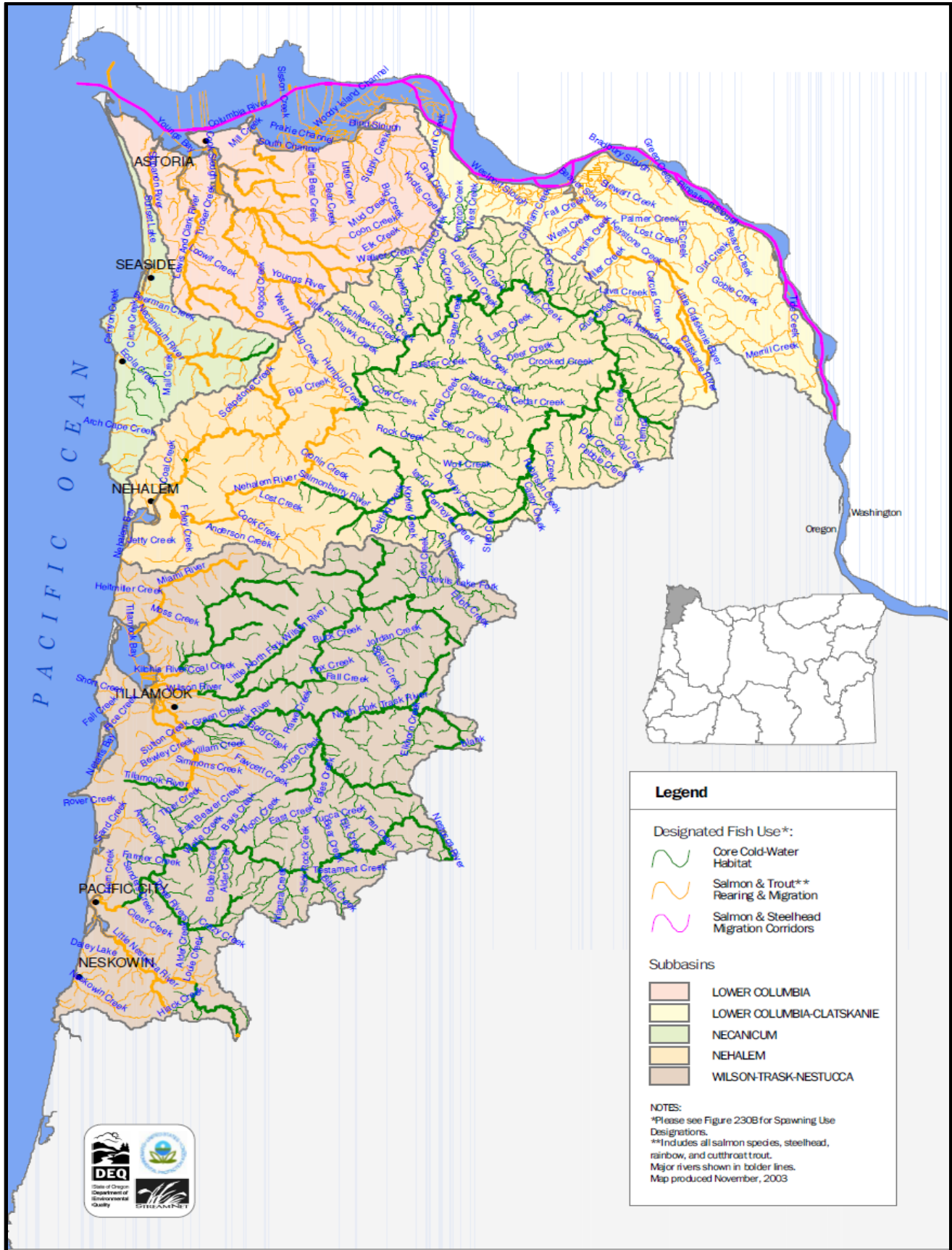
<sup>1</sup> With adequate pretreatment (filtration & disinfection) and natural quality to meet drinking water standards.

<sup>2</sup> See also Figures 230A and 230B for fish use designations for this basin.



# OAR 340-041-0230 – Figure 230A

## Fish Use Designations\* - North Coast Basin, Oregon

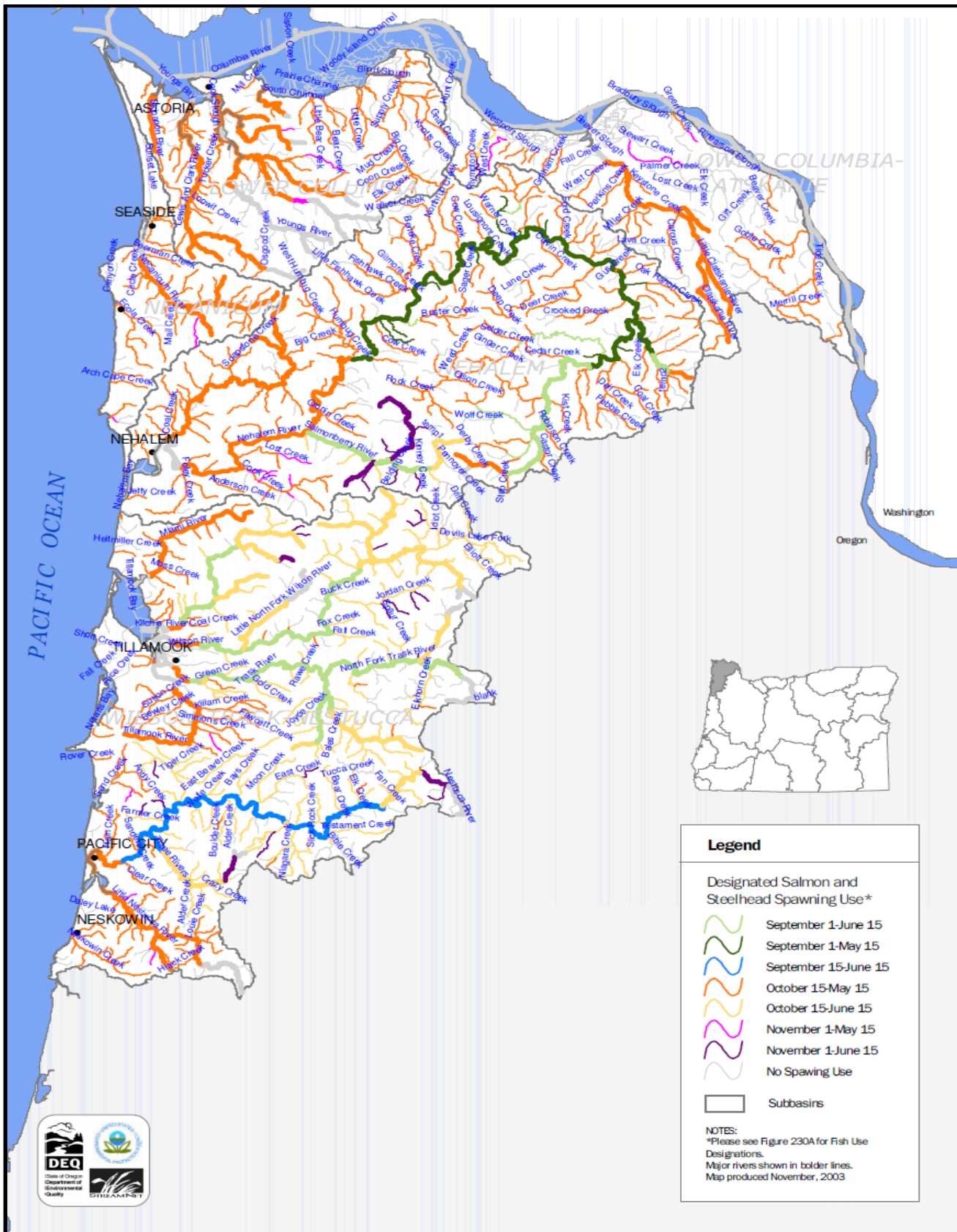




State of Oregon Department of Environmental Quality

# OAR 340-041-0230 – Figure 230B

## Salmon and Steelhead Spawning Use Designations\* North Coast Basin, Oregon

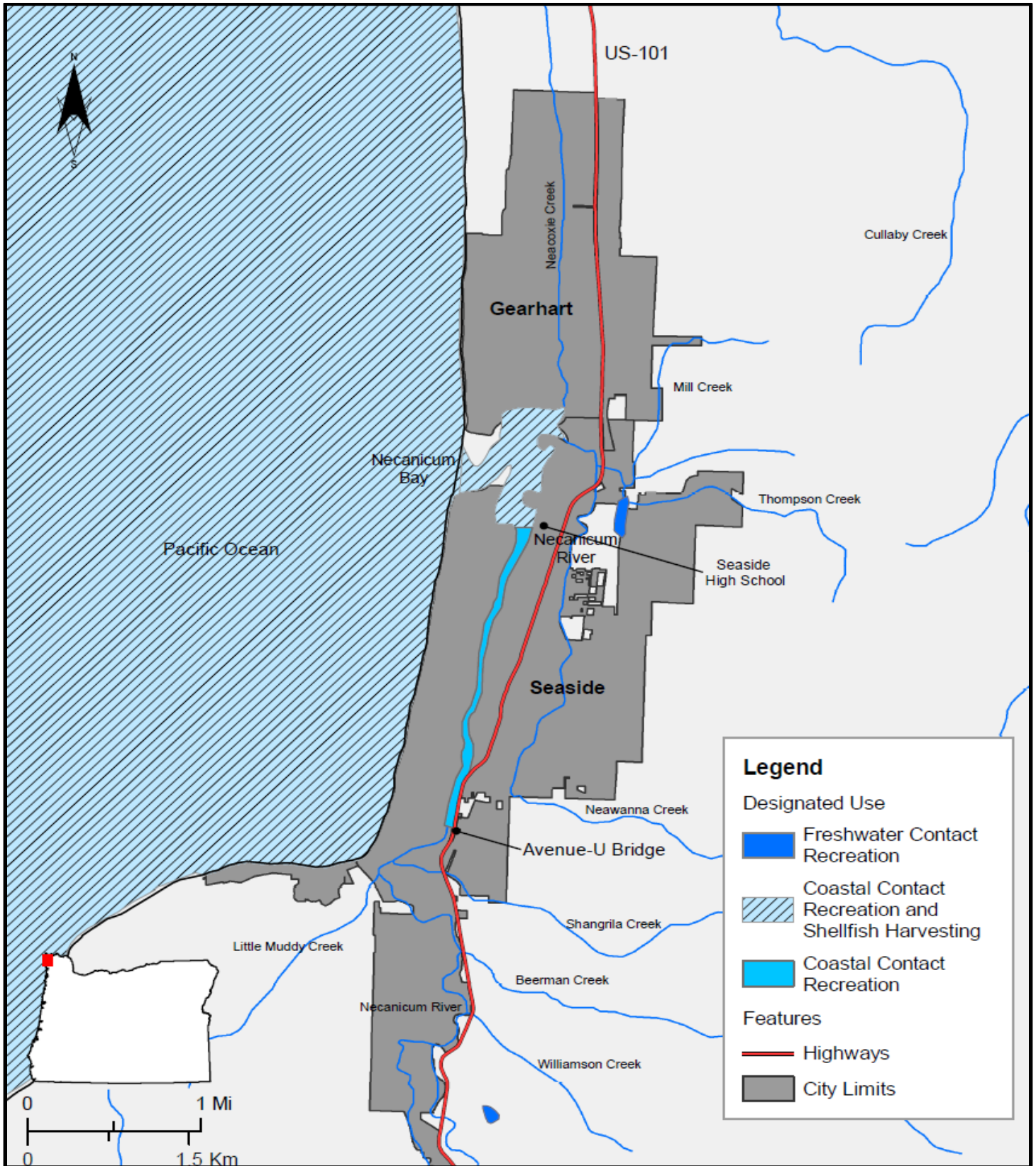






# OAR 340-041-0230 – Figure 230C

## Water Contact Recreation and Shellfish Harvesting Designated Uses Necanicum Bay, Oregon

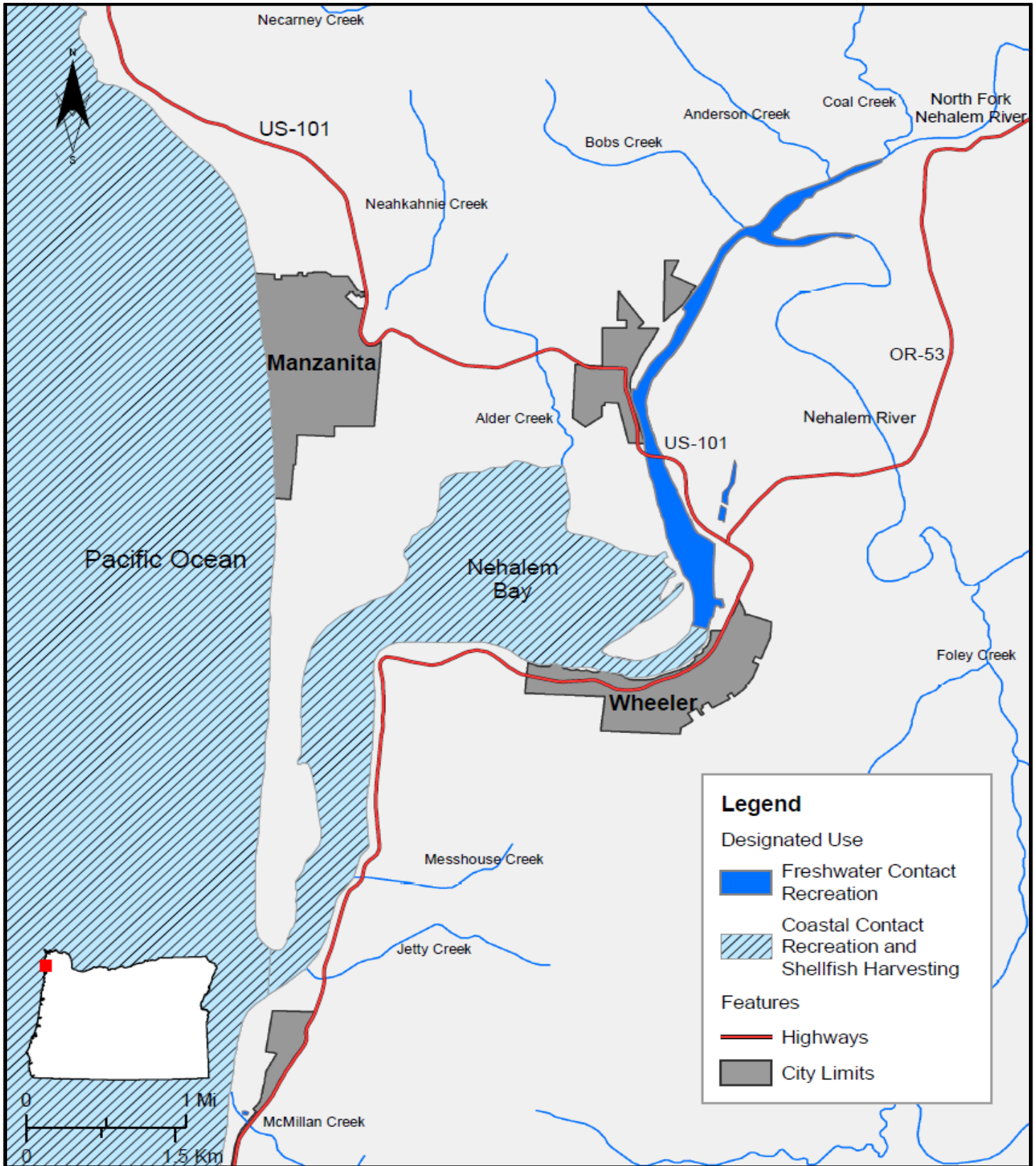




State of Oregon Department of Environmental Quality

# OAR 340-041-0230 – Figure 230D

## Water Contact Recreation and Shellfish Harvesting Designated Uses Nehalem Bay, North Coast Basin, Oregon



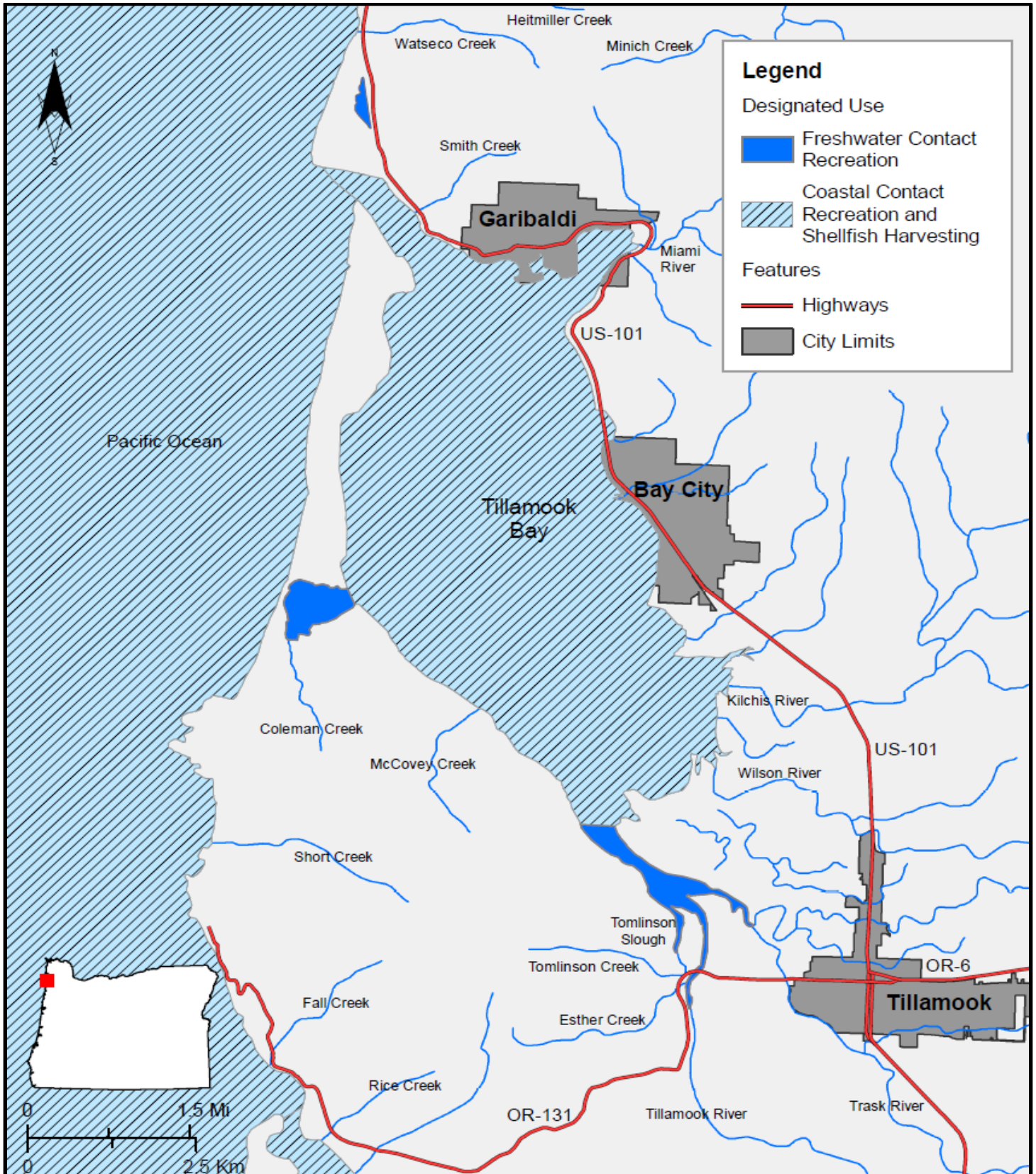




State of Oregon Department of Environmental Quality

# OAR 340-041-0230 – Figure 230E

## Water Contact Recreation and Shellfish Harvesting Designated Uses Tillamook Bay, North Coast Basin, Oregon



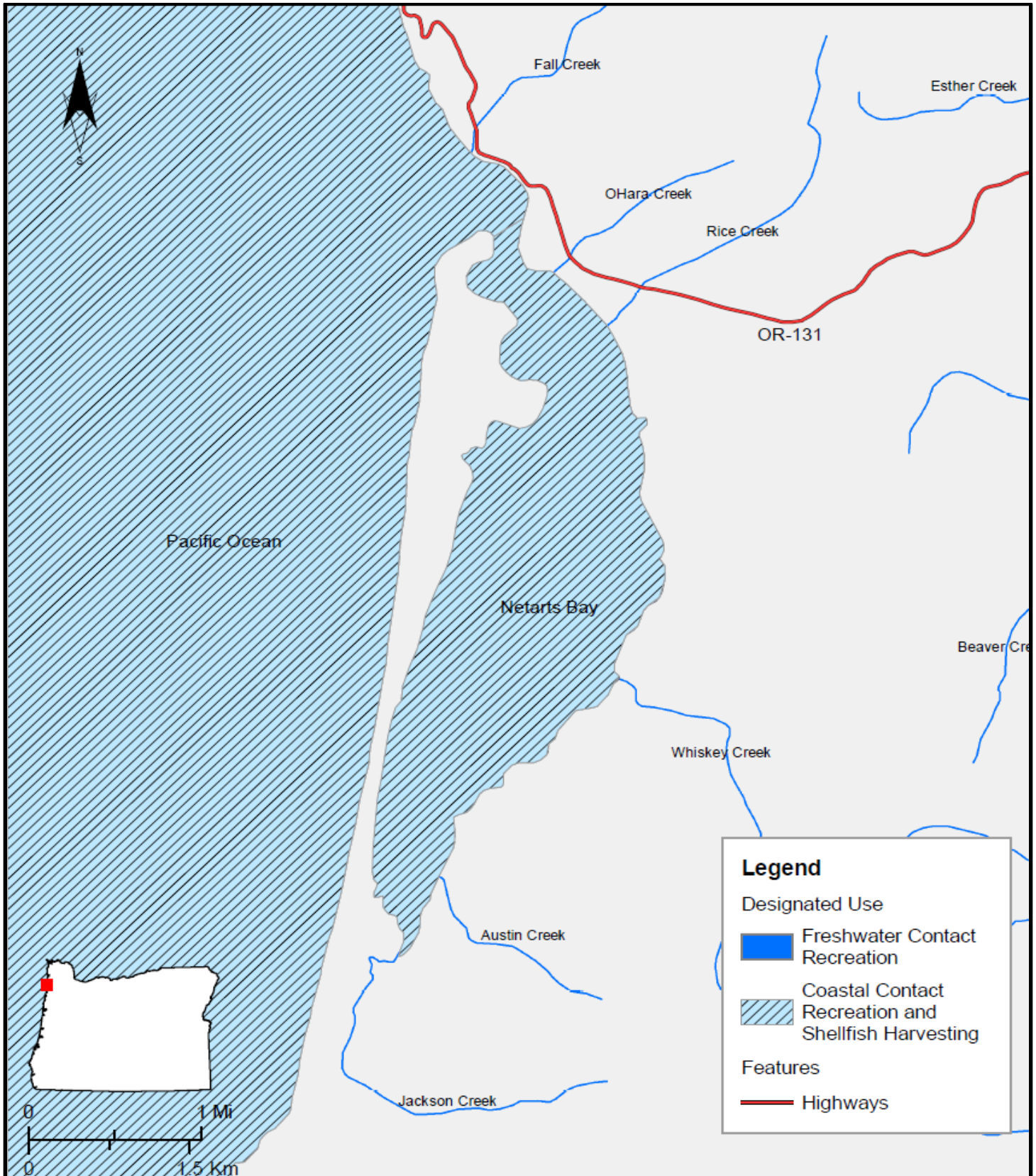




State of Oregon Department of Environmental Quality

# OAR 340-041-0230 – Figure 230F

## Water Contact Recreation and Shellfish Harvesting Designated Uses Netarts Bay, North Coast Basin, Oregon

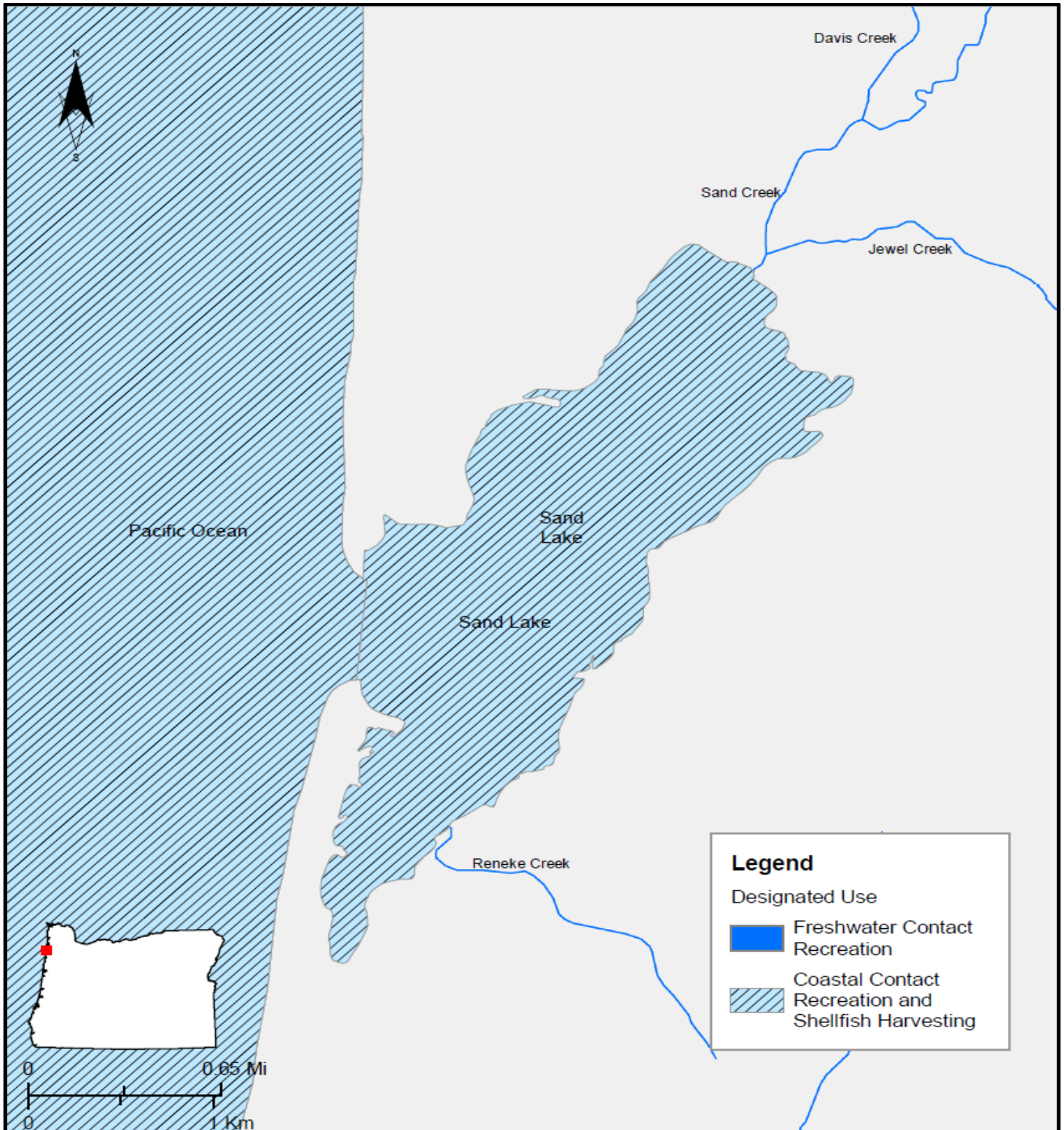




State of Oregon Department of Environmental Quality

# OAR 340-041-0230 – Figure 230G

## Water Contact Recreation and Shellfish Harvesting Designated Uses Sand Lake, North Coast Basin, Oregon







State of Oregon Department of Environmental Quality

# OAR 340-041-0230 – Figure 230H

## Water Contact Recreation and Shellfish Harvesting Designated Uses Nestucca Bay, North Coast Basin, Oregon

