

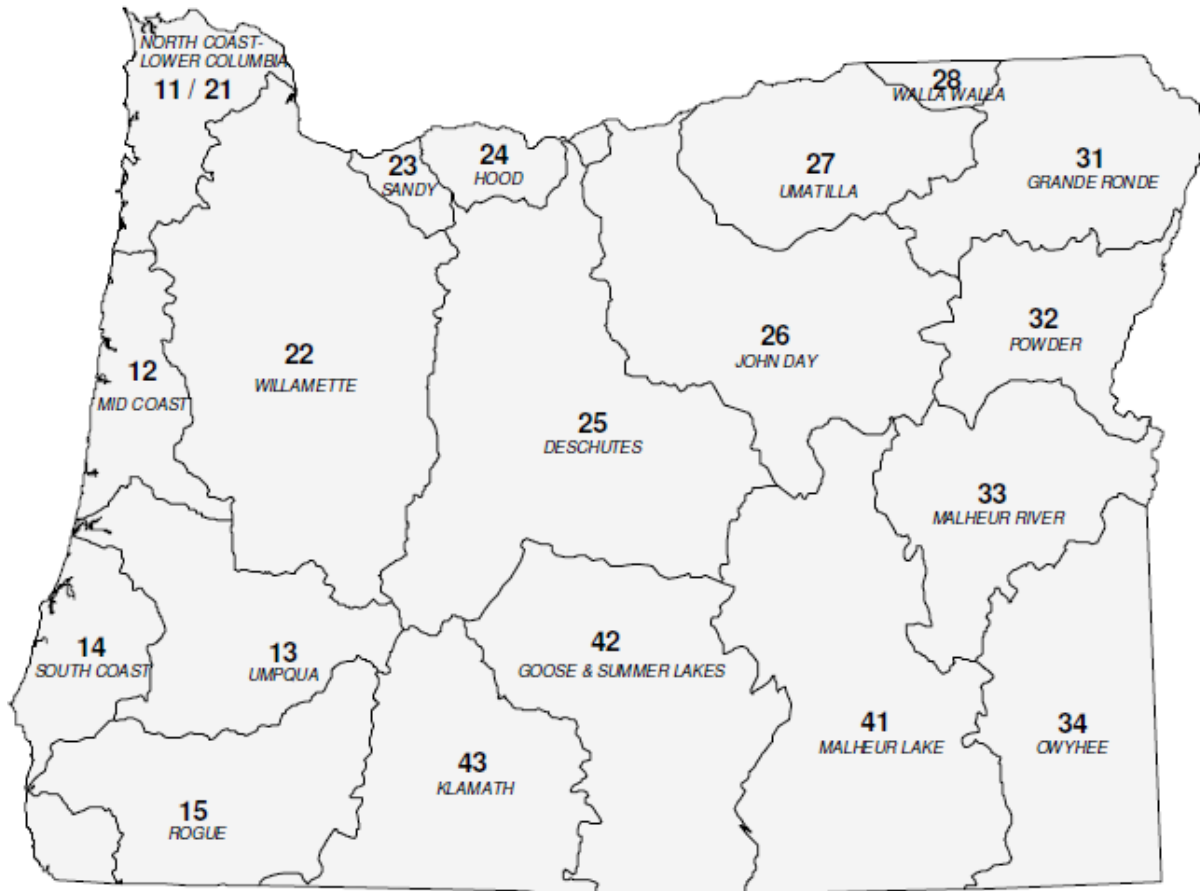


State of Oregon Department of Environmental Quality

**OAR 340-041-0300**

**Tables and Figures**

# Figure 1: Oregon Basin Index Map



Basin Name	Basin #	OAR #
DESCHUTES	25	340-041-0130
GOOSE & SUMMER LKS	42	340-041-0140
GRANDE RONDE	31	340-041-0151
HOOD	24	340-041-0160
JOHN DAY	26	340-041-0170
KLAMATH	43	340-041-0180
MALHEUR LAKE	41	340-041-0190
MALHEUR RIVER	33	340-041-0201
MD COAST	12	340-041-0220
NORTH COAST-LWR COL	11-21	340-041-0230
OWYHEE	34	340-041-0250
POWDER	32	340-041-0260
ROGUE	15	340-041-0271
SANDY	23	340-041-0286
SOUTH COAST	14	340-041-0300
UMATILLA	27	340-041-0310
UMPQUA	13	340-041-0320
WALLA WALLA	28	340-041-0330
WILLAMETTE	22	340-041-0340



340-041-0300

Table 300A

Designated Beneficial Uses

South Coast Basin

(November 2003)

Beneficial Uses	Estuaries & Adjacent Marine Waters	All Streams & Tributaries Thereto
Public Domestic Water Supply <sup>1</sup>		X
Private Domestic Water Supply <sup>1</sup>		X
Industrial Water Supply	X	X
Irrigation		X
Livestock Watering		X
Fish & Aquatic Life <sup>2</sup>	X	X
Wildlife & Hunting	X	X
Fishing <sup>3</sup>	X	X
Boating	X	X
Water Contact Recreation <sup>3</sup>	X	X
Aesthetic Quality	X	X
Hydro Power		X
Commercial Navigation & Transportation	X	

<sup>1</sup> With adequate pretreatment (filtration & disinfection) and natural quality to meet drinking water standards.

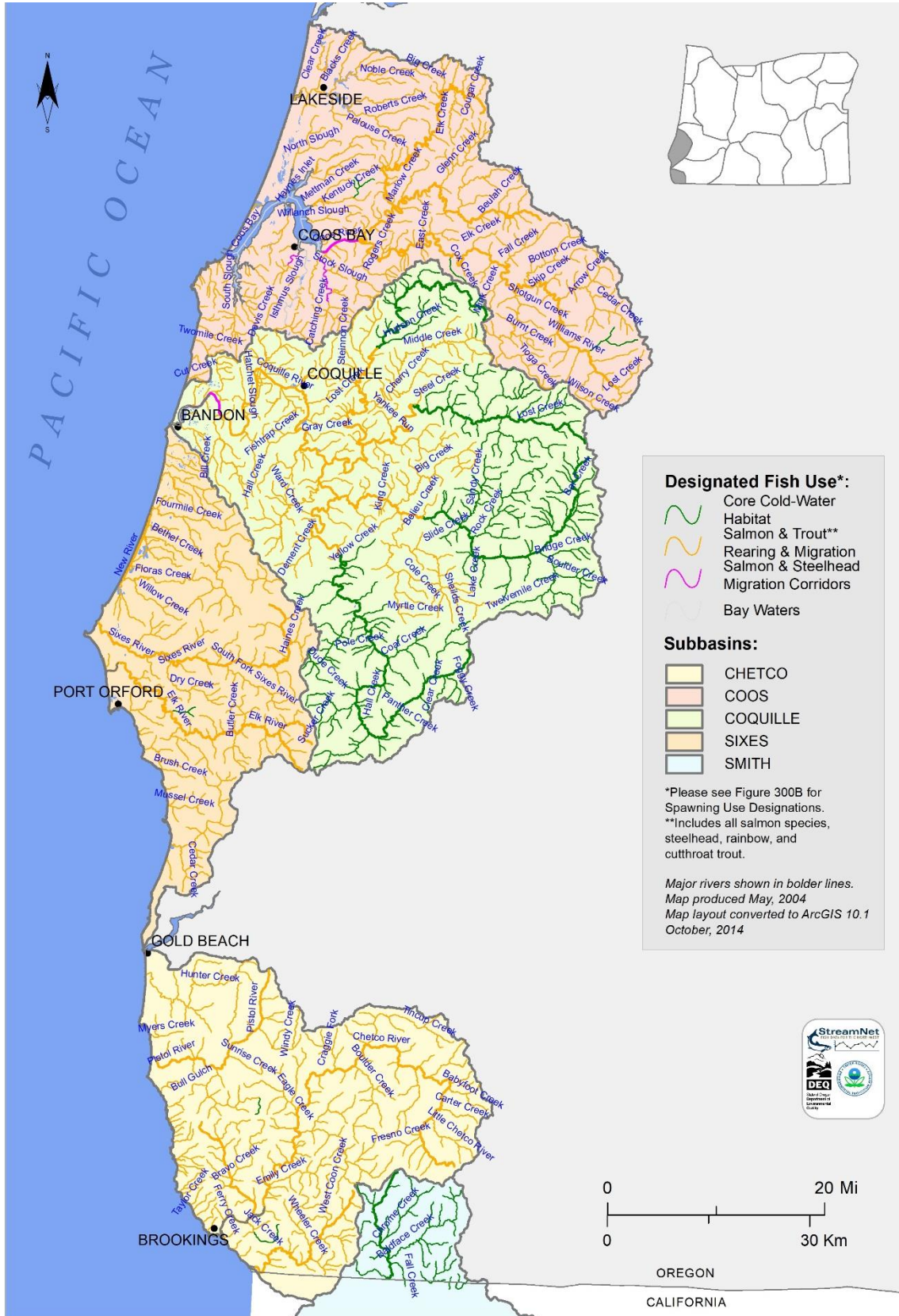
<sup>2</sup> See also Figures 300A and 300B for fish use designations for this basin.

<sup>3</sup> For coastal water contact recreation and shellfish harvesting uses, see also Figures 300C (Coos Bay) and 300D (Coquille River Estuary).



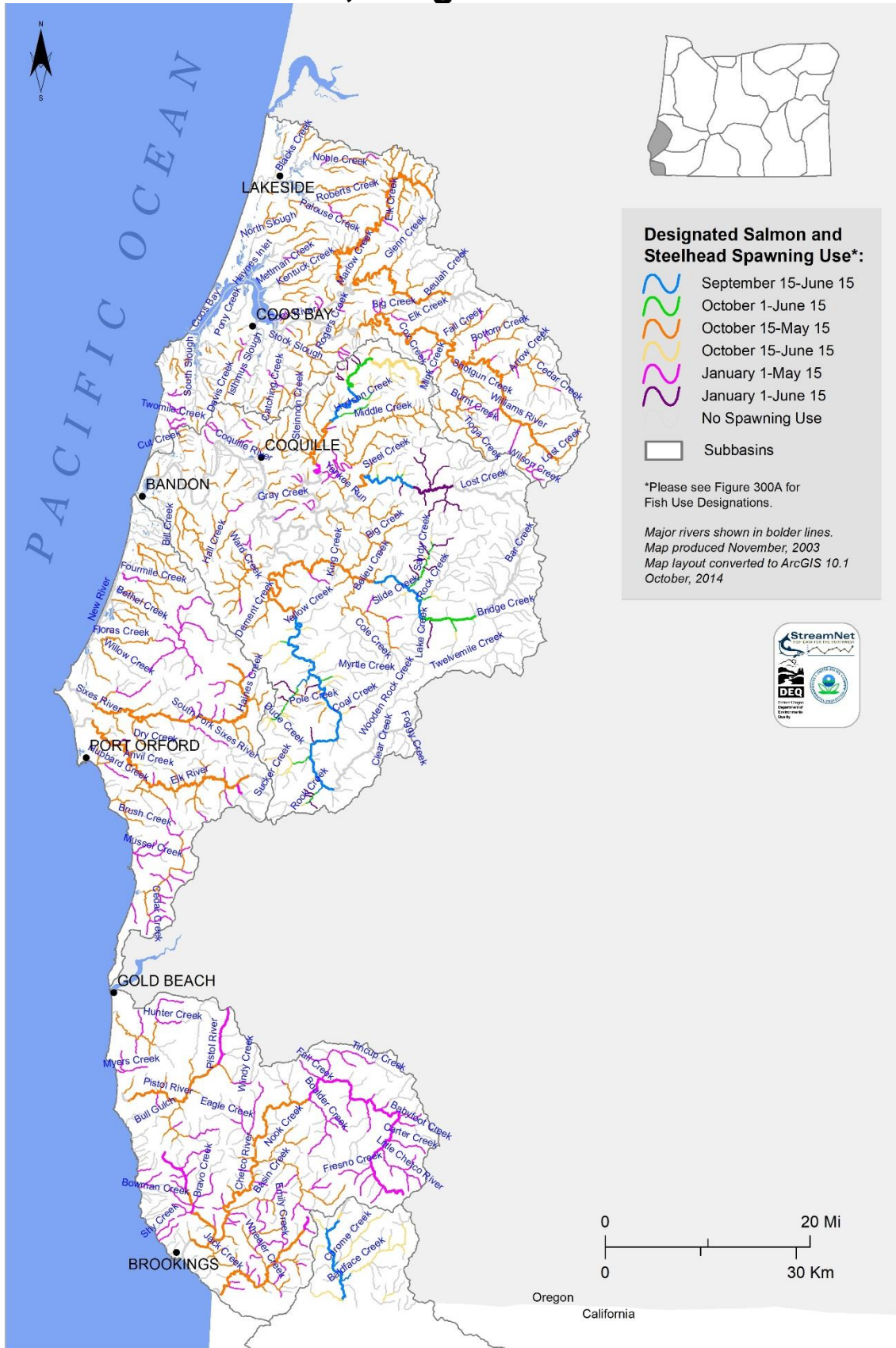
# OAR 340-041-0300

## Figure 151A: Fish Use Designations\* South Coast Basin, Oregon



# OAR 340-041-0300

## Figure 300B Salmon and Steelhead Use Designations South Coast Basin, Oregon









State of Oregon Department of Environmental Quality

# OAR 340-041-0300 – Figure 300D

## Water Contact Recreation and Shellfish Harvesting Designated Uses Coquille River, South Coast Basin, Oregon

