

# Transportation System Plan Funding Program Update Webinar

Friday, April 5<sup>th</sup>, 2024

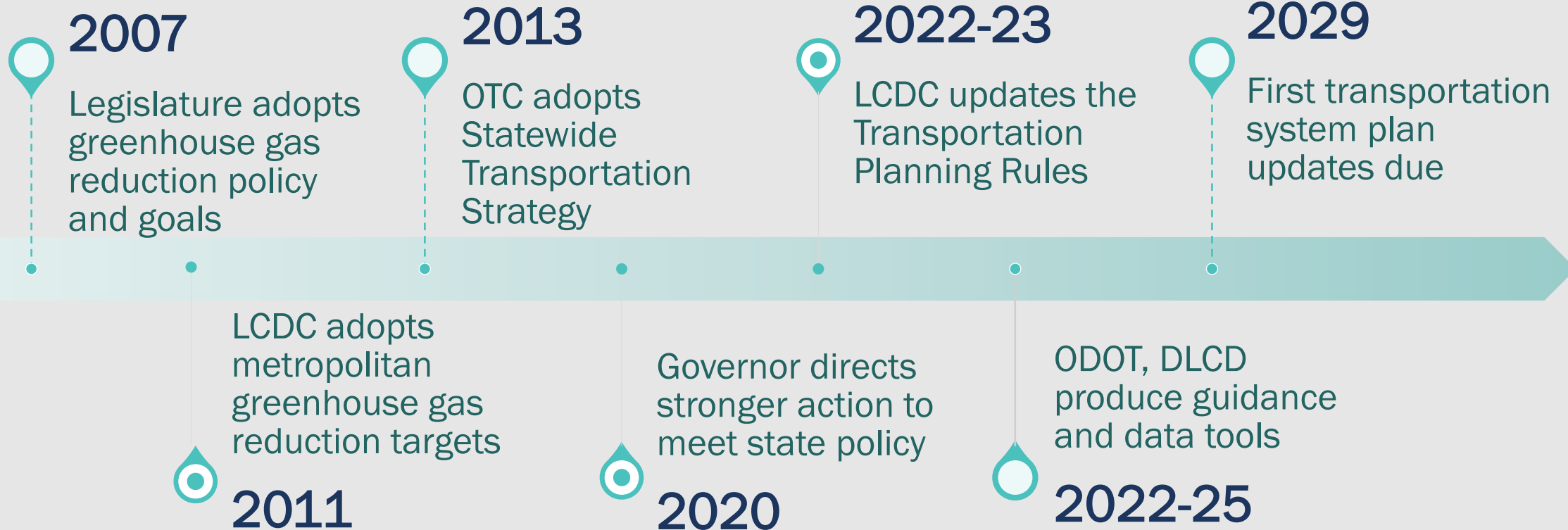


# Agenda

---

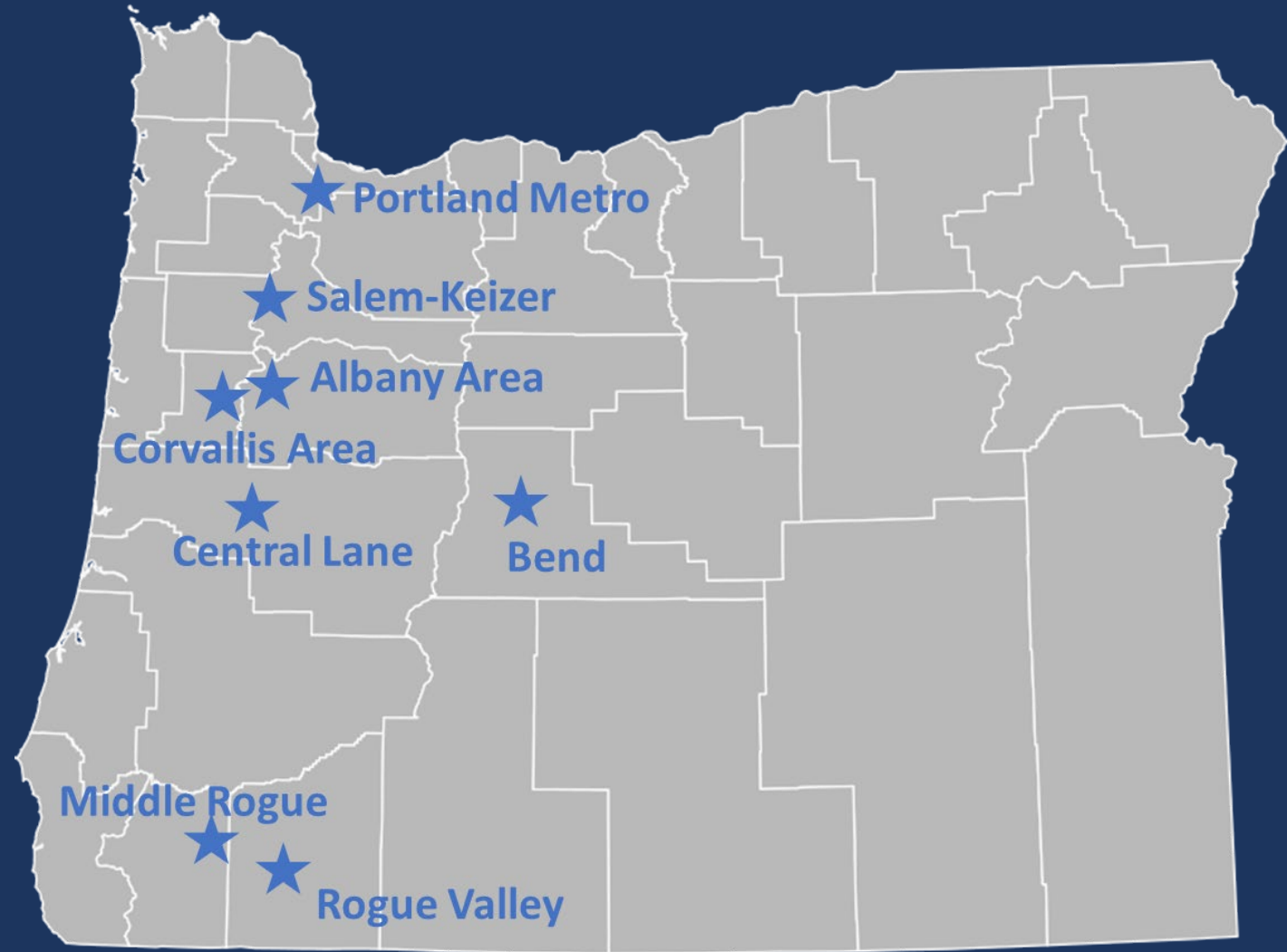
- Climate, Housing and Equity Context
- Transportation Planning Rules Implementation Recap
- Transportation System Plan Program Funding Updates
- Discussion

# Timeline



# Updated TPR

- Climate-Friendly and Equitable Communities program aligns with Oregon's climate and equity goals
- Applies to cities and counties in 8 metropolitan areas



# Implementation Support

---

- Oregon Transportation Commission allocated \$18.5M for CFEC implementation:
  - \$3.5M to support regional climate pollution target-setting
  - \$15M to update technical resources, develop a multimodal inventory and support TSP updates
- Legislature allocated DLCD \$4M for parking reform, community engagement, climate-friendly areas and other land use planning

# ODOT Implementation Work

---

Multimodal  
Inventory

Analysis  
Procedures  
Manual

TSP  
Guidelines

Scenario  
Planning

Modeling  
Guidance

Scope of  
Work  
Template



# DLCD Implementation Support

---

Planning  
Grants

Climate  
Friendly Areas  
Methods Guide

Parking  
Guidance &  
Toolkit

Engagement  
Guidance &  
Toolkit

Multimodal  
Gap Summary  
Support

Walkability  
Model Code

# Funding Available

---

- \$15M allocated in 2024-2027 Statewide Transportation Improvement Program
  - \$7.5M to develop statewide technical resources for TSP updates
  - \$7.5M to directly fund local TSP updates
- Additional funding uncertain
  - Federal and state transportation funding extremely limited
  - DLCDC considering budget request for 2025 Legislature
  - Collectively pursuing more funding opportunities



# Proposed Strategies

---

- Prioritize jurisdictions required to update TSPs before 2030
- Local agencies lead community engagement

# Prioritize TSPs Required by 2030

---

- No deadline for cities and counties with <5,000 residents
- Exemptions allowed for cities and counties with <10,000 residents
- No deadline for cities and counties in Portland metro area in recognition of already-adopted plans and policies

# Small Cities

---

- Communities under 5,000 have no specific deadline for a TSP update
- Communities between 5 - 10,000 are allowed exemptions
- Small cities have fewer options to significantly change land uses and transportation systems

# Portland Metro Area Communities

---

- No specific deadline for a TSP update
- Rules recognize planning aligned with updated TPR
  - Climate Smart Communities
  - 2040 Growth Centers
  - Regional Transportation Plan policies like Region Mobility Policy, High-Capacity Transit and more

# Local agencies lead community engagement

---

- Equitable engagement is at the center of updated TPRs and a common source of in-kind match
- City and county staff would lead engagement efforts
- Consultant time reserved for technical support, graphics, translation/interpretation and materials development
- ODOT and DLCD providing guidance and technical support for equitable engagement analysis

# How these strategies can work

---

- Allows State to fund local TSPs within existing resources
- Collaboration to prepare strategic TSP scopes – focus on key updates to meet TPR requirements
- Small city options - pursue exemptions and TGM funding
- Savings can support planning work in the Portland Metro area

# Next Steps

---

- Scoping for cities required to have updated TSPs by 2030
  - Strategic scoping for TSP compliance, housing, & local needs
  - Consider schedule adjustments
- Supporting small cities
  - Available for 1-on-1 conversations with affected cities
  - TSP assessments
- Supporting Metro jurisdictions
  - 1-1 meetings with cities over 10,000 in Portland Metro area
  - TSP assessments
  - Pursue cost savings in program implementation
- Continue with Multimodal Inventory and technical guidance



# Questions & Discussion

---



## Contacts

[Theresa Conley](#)

Principal Planner, ODOT

[Theresa.L.Conley@odot.oregon.gov](mailto:Theresa.L.Conley@odot.oregon.gov)

[Bill Holmstrom](#)

Land Use and Transportation Planning Coordinator, DLCD

[Bill.Holmstrom@dlcd.oregon.gov](mailto:Bill.Holmstrom@dlcd.oregon.gov)